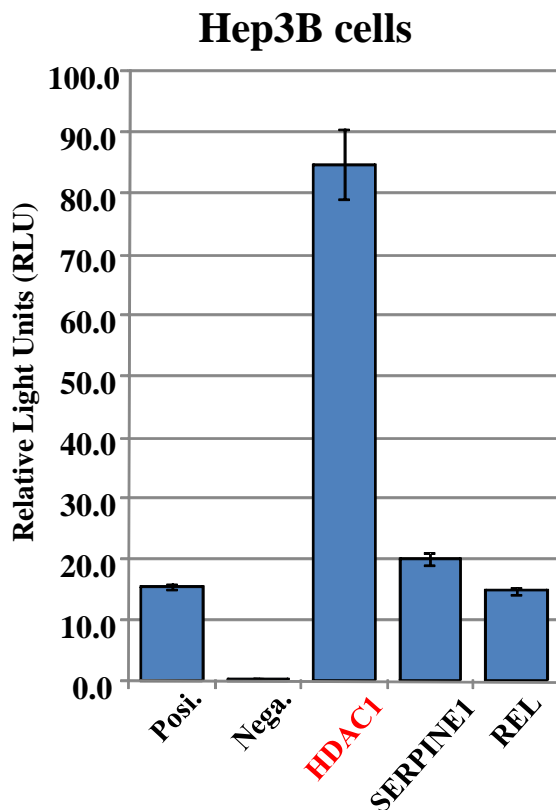
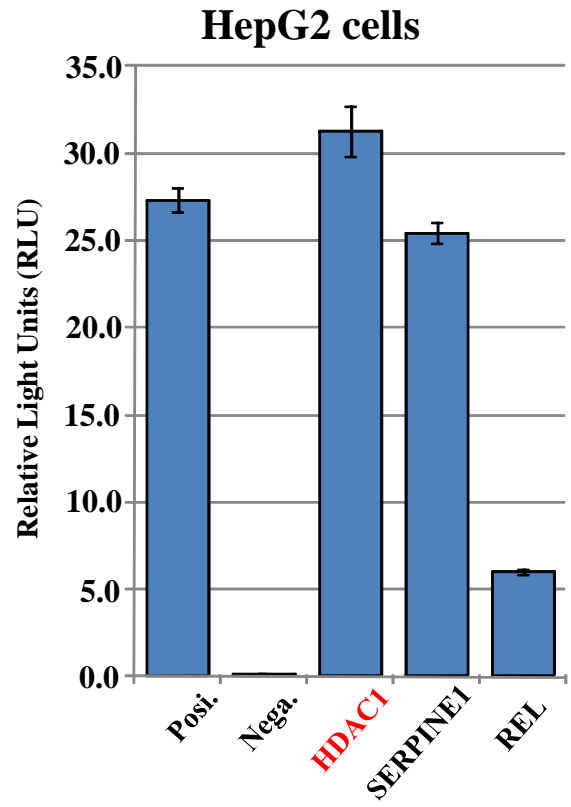
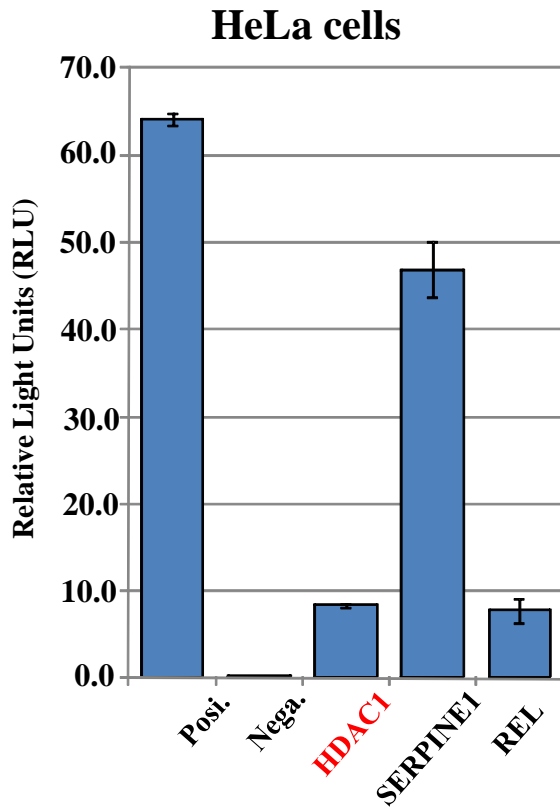


The Promoter Activities of Reporter Constructs



Posi.: pGL3 Control Vector
(SV40 promoter)

Nega.: Empty Vector

HDAC1: pGL4-phHDAC1 (RDB# 7484)

SERPINE1: pGL4-phSERPINE1 (RDB# 7461)

REL: pGL4-phREL (RDB# 7481)

[GENETYX : Nucleotide Sequence Homology Data]

Date : 2009.08.17

1st Nucleotide Sequence

File Name : Reference Seq. GNU
Sequence Size : 5742

2nd Nucleotide Sequence

File Name : RDB7484F.fasta
Sequence Size : 440

Unit Size to Compare = 1
Pick up Location = 1

[97.701% / 435 bp] INT/OPT. Score : < 224/ 1580 >

```
1'          GGCCTA ACTGGCCGGT ACCTGAGCTC GCTAGCCTCG AGGATGTGCT
          *****
1'' GTCCAAC TTT CTCTGGCCT- ACTGGCCGGT ACCTGAGCTC -CTAGCCTCG AGGATGTGCT

47' ACTGGCATCT AGTGGGTAGA GGCNTAAGGA TGCTGCTTAA TTTTTTTTTT TTTGAGACA
          *****
59' ACTGGCATCT AGTGGGTAGA GGC-TAAGGA TGCTGCTTAA TTTTTTTTTT TTTGAGACA

107' AGAGTTTCAC TCTANGTTGC CCAGGCACAG AACAGCTTCA CAGAAGCTGT TAATGCACAG
          *****
118'' AGAGTTTCAC TCTA-GTTGC CCAGGCACAG AACAGCTTCA CAGAAGCTGT TAATGCACAG

167' AATAGNCTTC CTACAAAAAA GCATTACCTG GCCCAAATG TCATTAGCTA CCAGGCNTGA
          *****
177'' AATAG-CTTC CTACAAAAAA GCATTACCTG GCCCAAATG TCATTAGCTA CCAGGC-TGA

227' GAAACCTGCC CTCCTAGGCC GGGCGTGTG GCTCACGCC GTAATCTNCA GCATATTGGG
          *****
235'' GAAACCTGCC CTCCTAGGCC GGGCGTGTG GCTCACGCC GTAATCT-CA GCATATTGGG
```



```

287' AGGCCGAGGT GGGCGGATCC TGAGGTCAGG AGTTCGAGNA CCACCTGGAC CAACACGGAG
*****
294" AGGCCGAGGT GGGCGGATCC TGAGGTCAGG AGTTCGAG-A CCACCTGGAC CAACACGGAG

347' AAACCCAGTC TCTACCAAAA ATACAAAATN TAGCCGGGCA TGGTGGCACA TGCTTGTAA
*****
353" AAACCCAGTC TCTACCAAAA ATACAAAAT- TAGCCGGGCA TGGTGGCACA TGCTTGTAA

407' CCCAGCTACT CGGGAGGCTG NAGGCAGGAG AACCGCTTGA ACACAGAGGC AGAGATTGTG
*****
412" CCCAGCTACT CGGGAGGCTG -AGGCAGGAA

```

1st Nucleotide Sequence

File Name : Reference Seq. GNU
Sequence Size : 5742

2nd Nucleotide Sequence

File Name : RDB7484R. fasta (Complementary)
Sequence Size : 196

Unit Size to Compare = 1
Pick up Location = 1

[95.408% / 196 bp] INT/OPT. Score : < 496/ 713 >

```

1381' GCTGCGCGGC TATAGNGTGA GCCCAGGAGG GGACGGGCGG GCGGGGCCGG AGGCCCGCCC
                                     **,   ***  * *
1"                                     CCCNC CCGCTCCGC

1441' CCTCCNCCC TGGGTCGGAC GCTGAGCGGA GCCGCGGGCG GGAGGGCGGA CGGACCGNAC
***** **
17" CCTCC-CCC TGGGTCGGAC GCTGAGCGGA GCCGCGGGCG GGAGGGCGGA CGGACCG-AC

```



1501' TGACGGTAGG GACGGGAGGC GAGCAAGATG GCGCAGACGC AATCAAGATC TGGCCTCGGC

75" TGACGGTAGG GACGGGAGGC GAGCAAGATG GCGCAGACGC AATCAAGATC TGGCCTCGGC

1561' GGCCAAGCTT GGCAATCCGG TACTGTTGGT AAAGCCACCA TGGAAGATGC CAAAAACATT

135" GGCCAAGCTT GGCAATCCGG TACTGTTGGT AAAGCCACCA TGGAAGATGC CAAAAACATT

1621' AAGAAGGGCC CAGCGCCATT CTACCCACTC GAAGACGGGA CCGCCGGCGA GCAGCTGCAC
**
195" AA