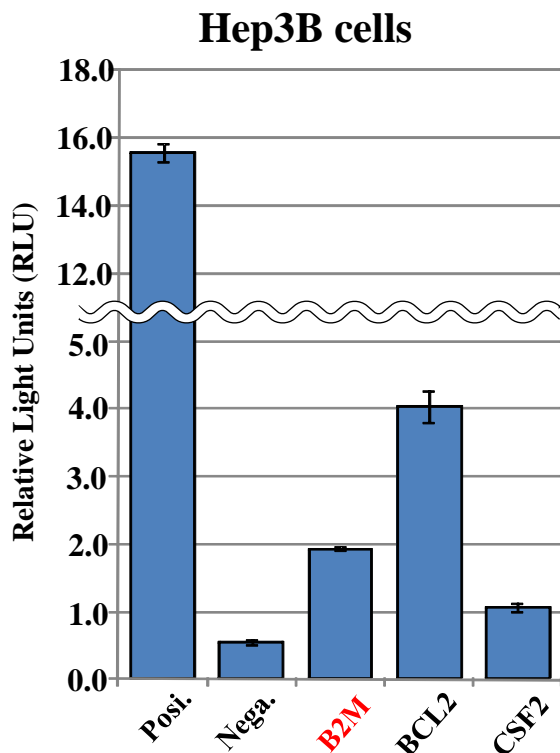
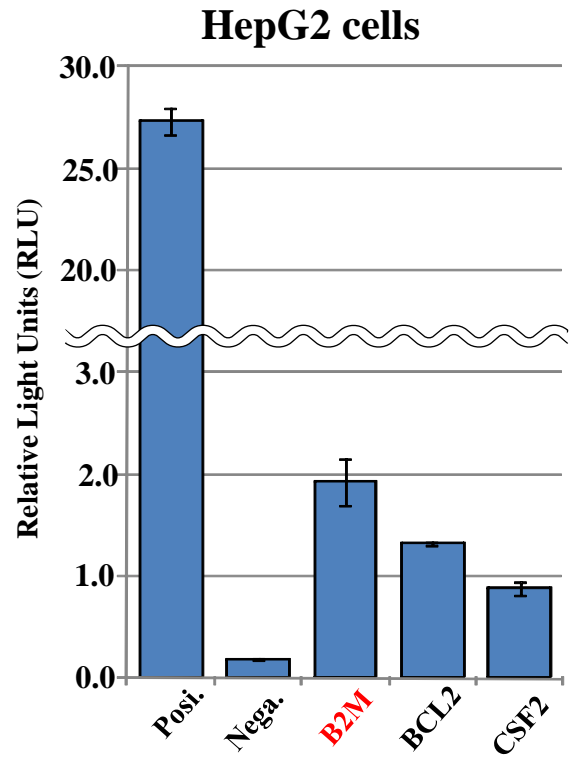
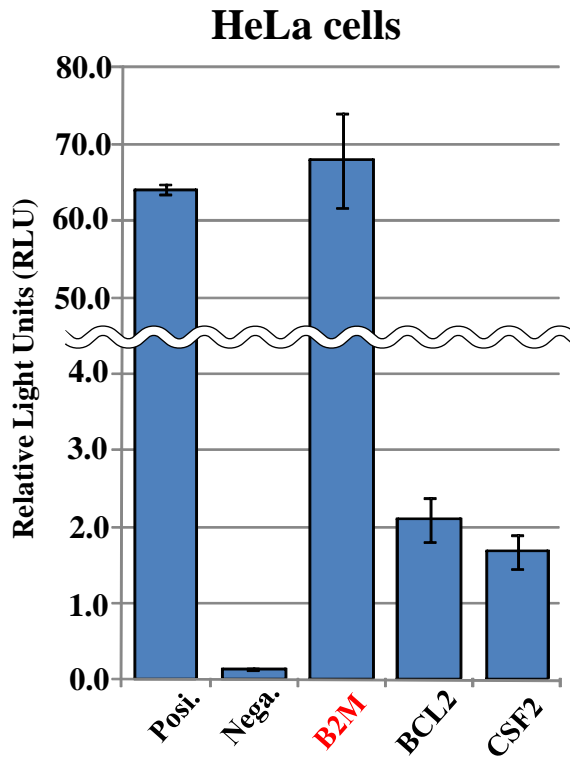


# The Promoter Activities of Reporter Constructs



Posi.: pGL3 Control Vector  
(SV40 promoter)

Nega.: Empty Vector

**B2M**: pGL4-phB2M (RDB# 7479)

**BCL2**: pGL4-phBCL2 (RDB# 7567)

**CSF2**: pGL4-phCSF2 (RDB# 7482)

[ GENETYX : Nucleotide Sequence Homology Data ]

Date : 2009.08.12

1st Nucleotide Sequence

File Name : Reference Seq. GNU  
Sequence Size : 5690

2nd Nucleotide Sequence

File Name : RDB7479F.fasta  
Sequence Size : 468

Unit Size to Compare = 1  
Pick up Location = 1

[96.280% / 457 bp] INT/OPT. Score : < 680/ 1594 >

```
1'          G GCCTAACTGG CCGGTACCTG AGCTCGCTAG CCTCGAGGAT
              * *****
1'' GGTGCCAGAA CATATCTCTG GCCTAACTGG CCGGTACCTG AGCTCGCTAG CCTCGAGGAT

42' ACTTACTATG TACCAGGCAT -TGTGGGAGN GCTCTCTC-T TGTGCATTAT CTCATTTTTCAT
      *****
61'' ACTTACTATG TACCAGGCAT GTGTGGGAG- GCTCTCTCAT TGTGCATTAT CTCATTTTTCAT

100' TAGGTCCATG GAGAGTATTG CNATTTTCTT AGTTTAGGCA TGGCCTCCAC AATAAAGATT
      *****
120'' TAGGTCCATG GAGAGTATTG C-ATTTTCTT AGTTTAGGCA TGGCCTCCAC AATAAAGATT

160' ATCAAAGCC TANAAAATAT GTAAAAGAAA CCTA-GAAGT TATT--TGTT GTGCTCCTTG
      *****
179'' ATCAAAGCC TA-AAAATAT GTAAAAGAAA CCTACGAAGT TATTGTAGTT GTGCTCCTTG

217' GGAAGNCTA GGCAAATCCT TTCAACTGAA AACCATGGTG ACTTCCAAGA TCTCTGCNCC
      *****
238'' GGAAG-CTA GGCAAATCCT TTCAACTGAA AACCATGGTG ACTTCCAAGA TCTCTGC-CC

277' CTCCCATCG CCATGGTCCA CTCCTCTTC TCACTGTTCC TCTTAGAANA AGATCTGTGG
```

```

*****
296" CTCCCATCG CCATGGTCCA CTCCTCTTC TCACTGTTCC TCTTAGAA-A AGATCTGTGG

337' ACTCCACCAC CACGAAATGG CGGCACCTTA TTTATGGTCN ACTTTAGAGG GTAGGTTT-T
*****
355" ACTCCACCAC CACGAAATGG CGGCACCTTA TATATGGTC- ACTTTAGAGG GTAGGTTTCT

396' CTTAATGGGT CTGCCTGTCA TGTTAACGT CNCTTGGCTG GGTCCAAGGC AGATGCAGTC
*****
414" CTTAATGGGT CTGCCTGTCA TGTTAACGT C-CTTGGCTG GGTCCAATGC AGATGC

```

1st Nucleotide Sequence

File Name : Reference Seq. GNU  
Sequence Size : 5690

2nd Nucleotide Sequence

File Name : RDB7479R. fasta (Complementary)  
Sequence Size : 717

Unit Size to Compare = 1  
Pick up Location = 1

[94.897% / 725 bp] INT/OPT. Score : < 484/ 2454 >

```

841' AAACAGCAAG GACATAGGGA GGAAC-TTC- TTGGCAC-AG AAC--TTTCC NAAACAC--T
*****
1" G GGAAC TTTCT TTGGCACAAG AACTTTTCCC AAAACACTTT

894' TTTTCCTGAA -GGGATACAA GAA--GCAAG AAA-GGTACT CTTTCACNTA GGACC-TTCT
***
42" TTTCCCTGAA GGGGATACCA GAAGGCCAAG AAAGGTACT CTTTCAACTA GAACCTTTCT

949' CTGAGC-TGT CC-TCAGGAT GCTTTT-GGG ACTA-TTTTT CTTNACCCAG AGAATGGAGA
*****

```

102" CTGAGCTTGT CCTTCAGGAT GCTTTTGGG ACTATTTTT CTTACCCAG AGAATGGAGA

1005' AA-CCCTGCA GGAATTCCC AAGCTGTAGT TATAANACAG AAGTTCTCCT TCTGCTAGGT  
\*\* \*\*\*\*\* \*\*\*\*\* \*\*\*\*\* \*\*\*\*\* \*\*

162" AACCCCTGCA GGAATTCCC AAGCTGTAGT TATAA-ACAG AAGTTCTCCT TCTGCTAGGT

1064' AGCATTCAAA GATCTTAATC TTCTGGNGTT TCCGTTTTCT CGAATGAAAA ATGCAGGTCC  
\*\*\*\*\* \*\*\*\*\* \*\*\*\*\* \*\* \*\*\*\*\* \*\*\*\*\* \*\*\*\*\*

221" AGCATTCAAA GATCTTAATC TTCTGG-GTT TCCGTTTTCT CGAATGAAAA ATGCAGGTCC

1124' GAGCAGTTAA CTGGCTGNGG GCACCATTAG CAAGTCACTT AGCATCTCTG GGGCCAGTCT  
\*\*\*\*\* \*\*\*\*\* \* \*\* \*\*\*\*\* \*\*\*\*\* \*\*\*\*\* \*\*\*\*\*

280" GAGCAGTTAA CTGGC-GGGG GCACCATTAG CAAGTCACTT AGCATCTCTG GGGCCAGTCT

1184' GCAAAGCGNA GGGGGCAGCC TTAATGTGCC TCCAGCCTGA AGTCCTAGAA TGAGCGCCCN  
\*\*\*\*\* \* \*\*\*\*\* \*\*\*\*\* \*\*\*\*\* \*\*\*\*\* \*\*\*\*\*

339" GCAAAGCG-A GGGGGCAGCC TTAATGTGCC TCCAGCCTGA AGTCCTAGAA TGAGCGCC-

1244' GGTGTCCCAA GCTGGGGCGC GCACCCAGAG TCGGAGGGCG CCGATGTACA NGACAGCAAA  
\*\*\*\*\* \*\*\*\*\* \*\*\*\*\* \*\*\*\*\* \*\*\*\*\* \*\*\*\*\*

397" GGTGTCCCAA GCTGGGGCGC GCACCCAGAG TCGGAGGGCG CCGATGTACA -GACAGCAAA

1304' CTCACCCAGT CTAGTGCATG CTTCTTAAA CATCACGAGA CNTCTAAGAA AAGGAAACTG  
\*\*\*\*\* \*\*\*\*\* \*\*\*\*\* \*\*\*\*\* \* \*\*\*\*\* \*\*\*\*\*

456" CTCACCCAGT CTAGTGCATG CTTCTTAAA CATCACGAGA C-TCTAAGAA AAGGAAACTG

1364' AAAACGGGAA AGTCCCTCTC TCTAACCTGG CANCTGCGTC GCTGGCTTGG AGACAGGTGA  
\*\*\*\*\* \*\*\*\*\* \*\*\*\*\* \*\* \*\*\*\*\* \*\*\*\*\* \*\*\*\*\*

515" AAAACGGGAA AGTCCCTCTC TCTAACCTGG CA-CTGCGTC GCTGGCTTGG AGACAGGTGA

1424' CGGTCCCTGC GGGCCTTGTG CTGNATTGGC TGGGCACGCG TTTAATATAA GTGGAGGCGT  
\*\*\*\*\* \*\*\*\*\* \*\* \*\*\*\*\* \*\*\*\*\* \*\*\*\*\* \*\*\*\*\*

574" CGGTCCCTGC GGGCCTTGTG CTG-ATTGGC TGGGCACGCG TTTAATATAA GTGGAGGCGT

1484' CGCGCTATCA AGATCTGGCC TCGGCGGCCA AGCTTGGCAA TCCGGTACTG TTGGTAAAGC  
\*\*\*\*\* \*\*\*\*\* \*\*\*\*\* \*\*\*\*\* \*\*\*\*\* \*\*\*\*\*

633" CGCGCTATCA AGATCTGGCC TCGGCGGCCA AGCTTGGCAA TCCGGTACTG TTGGTAAAGC

1544' CACCATGGAA GATGCCAAAA ACATTAAGAA GGGCCAGCG CCATTCTACC CACTCGAAGA  
\*\*\*\*\* \*\*\*\*\* \*\*\*\*\*

693" CACCATGGAA GATGCCAAAA ACATT