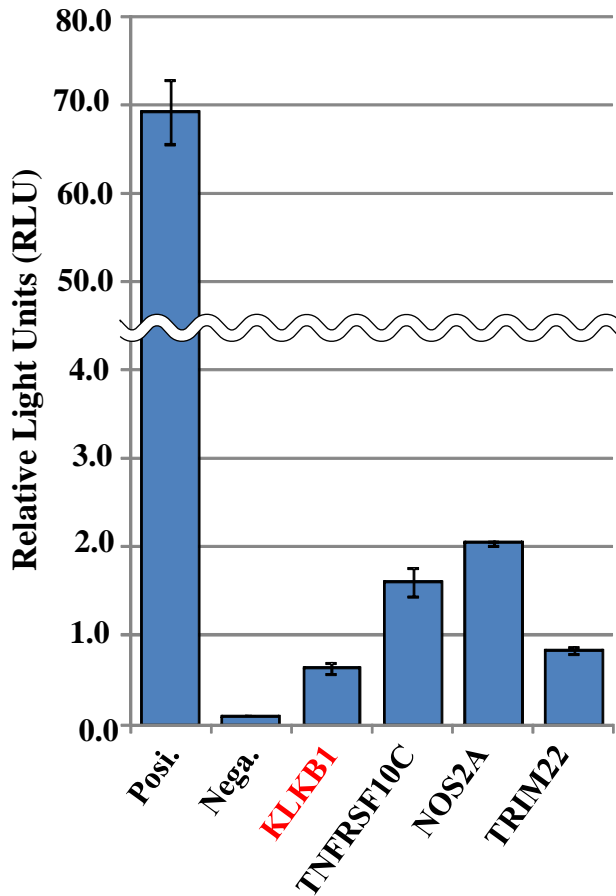
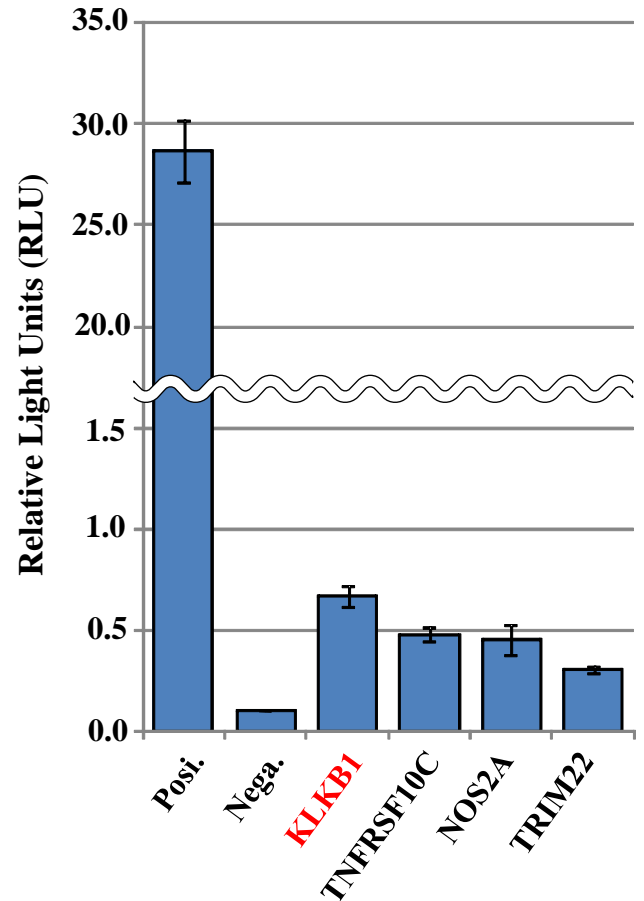


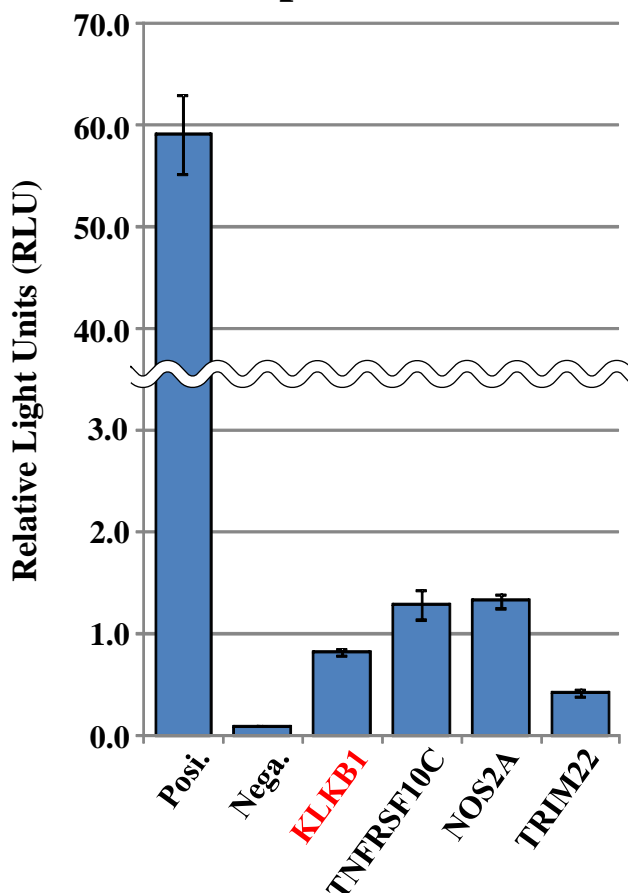
## HeLa cells



## HepG2 cells



## Hep3B cells



**Posi.:** pGL3 Control Vector  
(SV40 promoter)

**Nega.:** Empty Vector

**KLKB1:** pGL4-phKLKB1 (RDB# 7373)

**TNFRSF10C:** pGL4-ph TNFRSF10C (RDB# 7375)

**NOS2A:** pGL4-phNOS2A (RDB# 7377)

**TRIM22:** pGL4-phTRIM22 (RDB#7382)

[ GENETYX : Nucleotide Sequence Homology Data ]

Date : 2010.03.02

1st Nucleotide Sequence

File Name : Reference Seq.gnu  
Sequence Size : 5546

2nd Nucleotide Sequence

File Name : RDB7373F.fasta  
Sequence Size : 800

Unit Size to Compare = 1  
Pick up Location = 1

[87.304% / 764 bp] INT/OPT.Score : < 2232/ 2356 >

```
1'          G GCCTAACTGG CCGGTACCTG AGCTCGCTAG CCTCGAGGAT
              * *****
1'' GGTGCCAGAA CATTCTCTG GCCTAACTGG CCGGTACCTG AGCTCGCTAG CCTCGAGGAT

42' GGTACCTCC TGCTGCTTTA TTCCTTCCT TTGGTGGTTT CTTGTTTCCC CGATTATTTG
      *****
61'' GGTACCTCC TGCTGCTTTA TTCCTTCCT TTGGTGGTTT CTTGTTTCCC CGATTATTTG

102' TGATCAGTGT GGCCTTGCAC TGAAGTAGGC ACCTATTTCA GTCTTTACAT ACTAGCTTCA
      *****
121'' TGATCAGTGT GGCCTTGCAC TGAAGTAGGC ACCTATTTCA GTCTTTACAT ACTAGCTTCA

162' GCAGAGAAAG CCATTCACTA GTCAGATTGA CCAGAGATTG TTGGTGGGCT GTCTGTTGGG
      *****
181'' GCAGAGAAAG CCATTCACTA GTCAGATTGA CCAGAGATTG TTGGTGGGCT GTCTGTTGGG

222' GTCTATGCAC AGGATTCTG CTGGAGTTCT AAGGTGGGAA GGGCTGGATT CTGGGTTTCA
      *****
241'' GTCTATGCAC AGGATTCTG CTGGAGTTCT AAGGTGGGAA GGGCTGGATT CTGGGTTTCA
```





1st Nucleotide Sequence

File Name : Reference Seq.gnu  
Sequence Size : 5546

2nd Nucleotide Sequence

File Name : RDB7373R.fasta (Complementary)  
Sequence Size : 483

Unit Size to Compare = 1  
Pick up Location = 1

[99.585% / 482 bp] INT/OPT. Score : < 1916/ 1916 >

901' GCCCAGGCTT GAAGGTGAGA TGACACCGGT AATGTGAAAT TGCCTTCCT ATACACTTCT  
\*\*\*\*\*  
1" CCCTTCCT ATACACTTCT

961' ATGTGTCTTT TCTTATTCT GTGCTGCAAC CAGGTGGCAT AACCTCTCAC CTGATTTCCT  
\*\*\*\*\* \*\*  
19" ATGTGTCTTT TCTTATTCT GTGCTGCAAC CAGGTGGTAT AACCTCTCAC CTGATTTCCT

1021' AGCTCTAGTG AAGTTATTTT CGTGCATGGA TACTTGTTTCG AATTGATGTT TCTGCAAGGG  
\*\*\*\*\*  
79" AGCTCTAGTG AAGTTATTTT CGTGCATGGA TACTTGTTTCG AATTGATGTT TCTGCAAGGG

1081' ATGAGCGCTA GAAACTCCTG TTCTGACAAA CTCCTATTCC TATTCTTGCT GACATCACTC  
\*\*\*\*\*  
139" ATGAGCGCTA GAAACTCCTG TTCTGACAAA CTCCTATTCC TATTCTTGCT GACATCACTC

1141' CCTGAAATAG TTAATATACT TAACAGCTGA ACACGGATAG GATGTTTCATG GAATATGTTG  
\*\*\*\*\*  
199" CCTGAAATAG TTAATATACT TAACAGCTGA ACACGGATAG GATGTTTCATG GAATATGTTG

1201' ACAGGACAAA AAGTTGAAAC TGTTGGCAGA AACCCAAAGT CAATATTGAA GCCAAGCAAA  
\*\*\*\*\*  
259" ACAGGACAAA AAGTTGAAAC TGTTGGCAGA AACCCAAAGT CAATATTGAA GCCAAGCAAA



1261' ATATTGCCTG CAGTGCCACA TTAGAACAGC TTGAAGACCG TTCATTTTTA AGTGACAAGA  
\*\*\*\*\*  
319" ATATTGCCTG CAGTGCCACA TTAGAACAGC TTGAAGACCG TTCATTTTTA AGTGACAAGA

1321' GACTCACCTC CAAGAAGCAA TTGTGATCAA GATCTGGCCT CGGCGGCCAA GCTTGGCAAT  
\*\*\*\*\*  
379" GACTCACCTC CAAGAAGCAA TTGTGATCAA GATCTGGCCT CGGCGGCCAA GCTTGGCAAT

1381' CCGGTACTGT TGGTAAAGCC ACCATGGAAG ATGCCAAAAA CATTAGAAG GGCCCAGCGC  
\*\*\*\*\*  
439" CCGGTACTGT TGGTAAAGCC ACCATGGAAG ATGCCAAAAA CATAA