

RIKEN Clone ID : TEx17D07 (PC011054-41)

Lot# : 6078_A5Dh

Vector : pET-11a

Locus tag	TTHA1054
Insert size	2502 bp
Product	DNA polymerase I

● Plasmid DNA purification

Date : 2015.04.20

Culture : LB (100 ug/ml Ampicillin) 10 ml -> 37°C O/N

Date : 2015.04.21

Purification : QIAGEN Miniprep kit -> dH₂O 50 ul

● Digestion by restriction enzyme/Concentration calibration

Date : 2015.04.21

DNA concentration (O.D.): 177 ng/ul

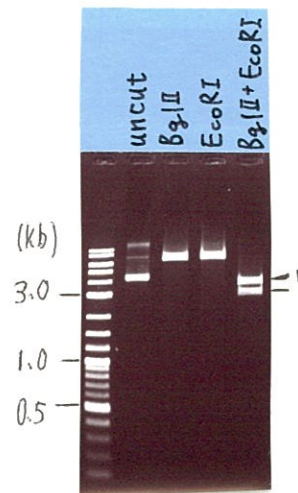
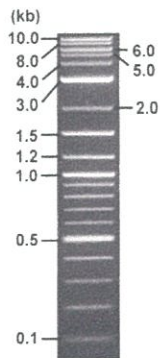
DNA	0.3	ul
Enzyme (BglII + EcoRI)	0.5 + 0.5	ul
Buffer H	1	ul
dH ₂ O	7.7	ul
Total	10	ul

< Size of fragment expected from this clone >

BglII	8.1	kb	
EcoRI	8.1	kb	
BglII + EcoRI	5.2 (vector)	2.9	kb

Electrophoresis : 1% agarose gel, 1x TAE Buffer

Marker : 2-Log DNA Ladder



* Vector size : Not appeared

Sequence of vector - insert junction : Verified

Thus, This clone should work though, Vector may not be "pET11a".

● Adjust plasmid DNA solution to 25 ng/ul

Date : 150424

DNA (<u>177</u> ng/ul)	38.0	ul
10x TE	26.9	ul
dH ₂ O	204.1	ul
Total	269.0	ul

● Shipping



Conc. : 25 ng/μl, Volume : 40 μl



~~Conc. : ng/μl, Volume : μl~~

APPROVED BY :



S/N G:244 A:216 T:80 C:152
KB.bcp
KB 1.4.1.8 Cap:14



S/N G:399 A:264 T:211 C:361

KB.bcp

KB 1.4.1.8 Cap:6

Primer B : T7 terminator

5' GCTAGTTATTGCTCAGCGG 3'

6078_TEx17D07_A5Dh_T7terminator

KB_3500_POP7_BDTv3.mob

Pts 1342 to 13038 Pk1 Loc:1319

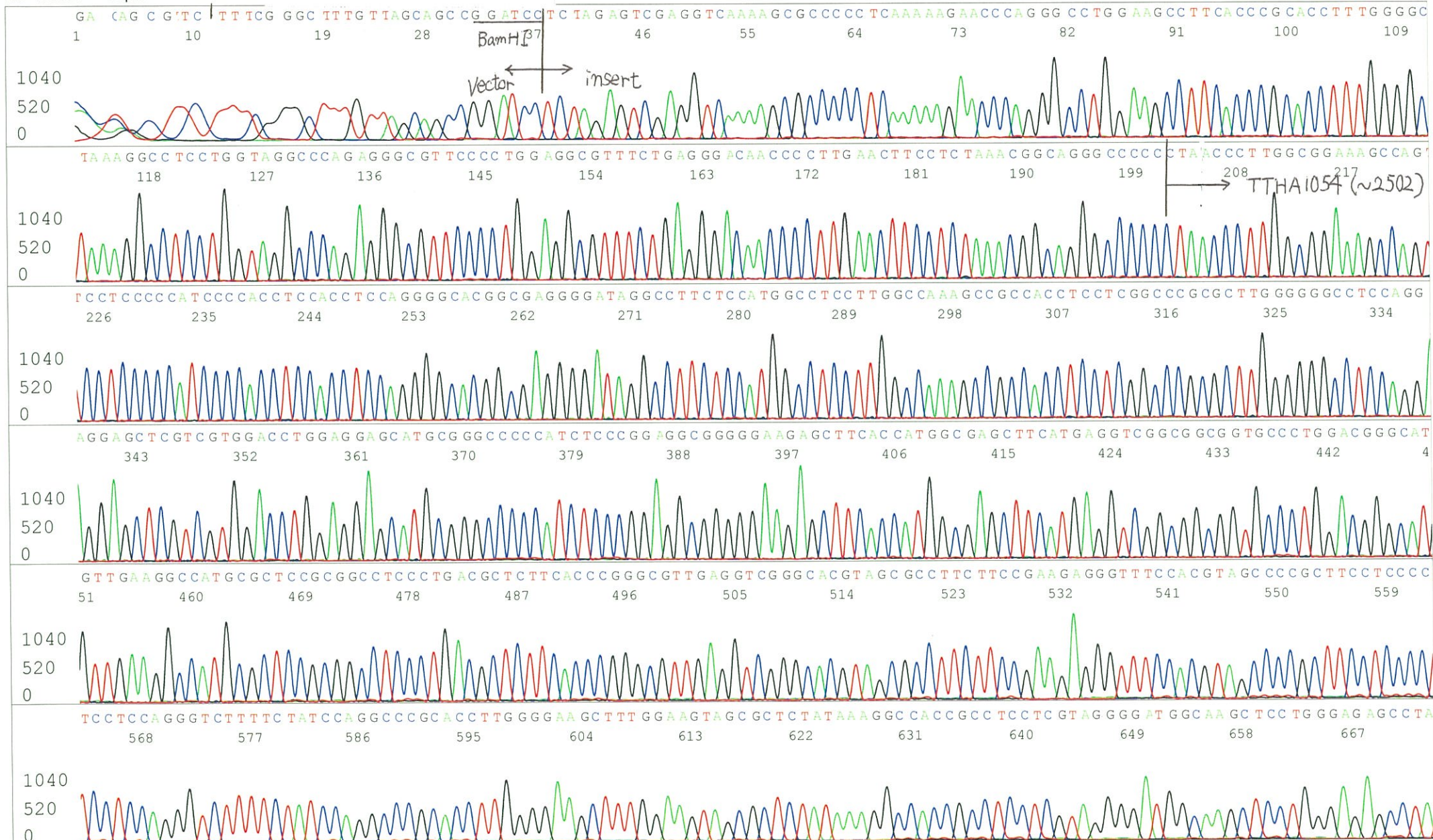
Version 6.0 HiSQV Bases: 1015

Apr 22,2015 09:45AM, JST

Apr 22,2015 10:11AM, JST

Spacing:11.55 Pts/Panel1350

Plate Name: 20150422_MGE

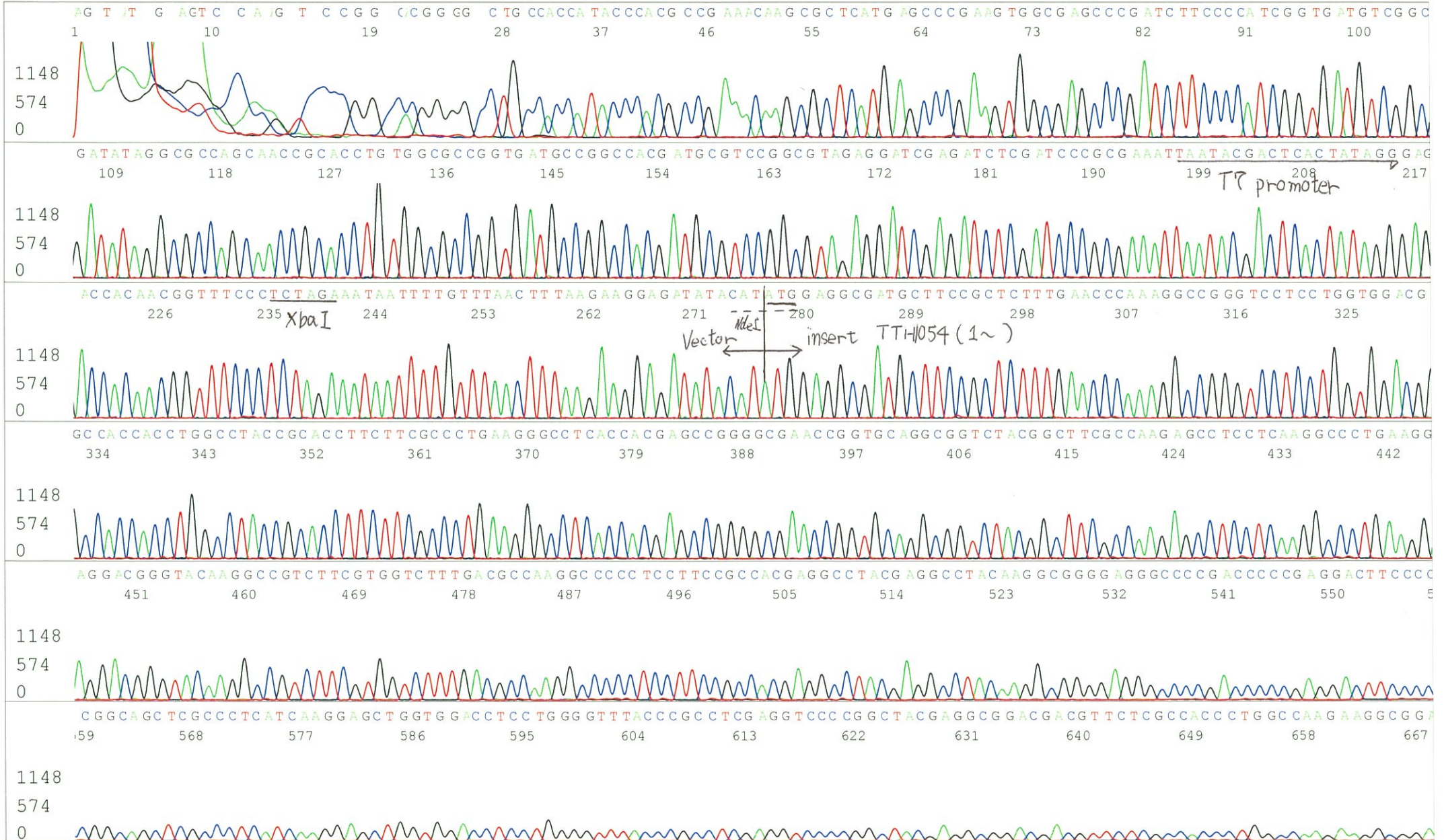


S/N G:399 A:264 T:211 C:361
KB.bcp
KB 1.4.1.8 Cap:6



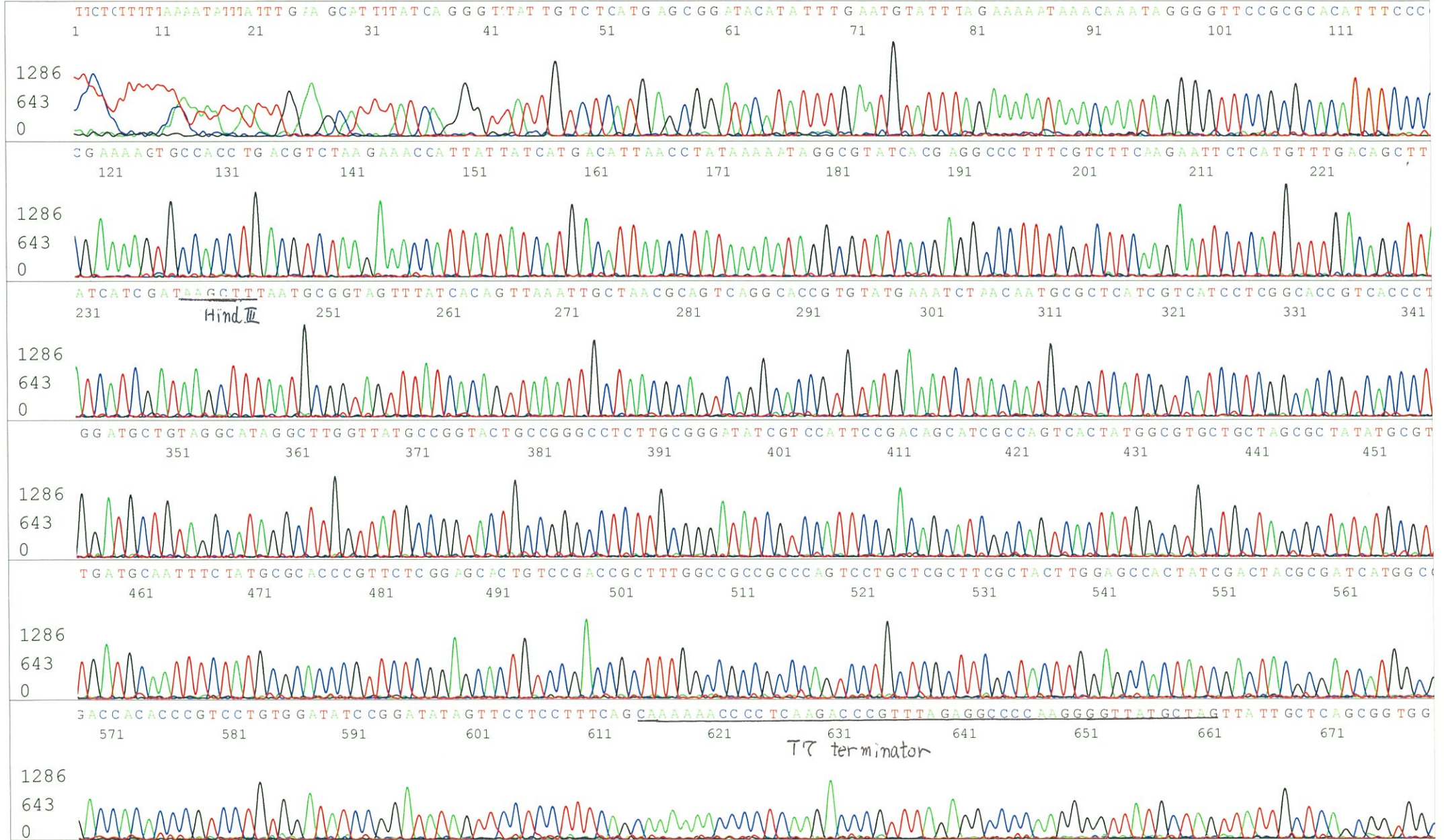
S/N G:201 A:145 T:95 C:148
KB.bcp
KB 1.4.1.8 Cap:23

Primer C pET_check_F
5' CCG CAA GGAATGGTGCATGC 3'



S/N G:201 A:145 T:95 C:148
KB.bcp
KB 1.4.1.8 Cap:23





S/N G:20 A:16 T:10 C:13
KB.bcp
KB 1.4.1.8 Cap:20

