

RIKEN Clone ID : TEx13G10 (PC011113-41)

Lot# : 6078_A4Du

Vector : pET-11a

Locus tag	TTHA1113
Insert size	930 bp
Product	L-lactate dehydrogenase

● Plasmid DNA purification

Date : 140430

Culture : LB (100 ug/ml Ampicillin) 10 ml -> 37°C O/N

Date : 140501

Purification : QIAGEN Miniprep kit -> dH₂O 50 ul

● Digestion by restriction enzyme/Concentration calibration

Date : 140501

DNA concentration (O.D.): 93 ng/ul

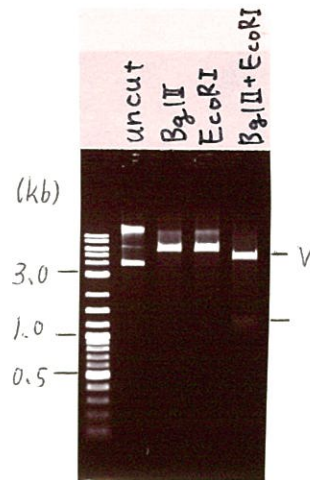
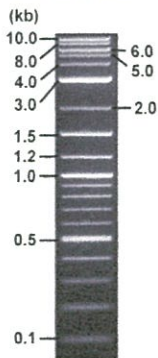
<Size of fragment expected from TEx13G10 >

DNA	0.4 ul
Enzyme (BglII + EcoRI)	0.5 + 0.5 ul
Buffer H	1 ul
dH ₂ O	ul
Total	10 ul

BglII	6571 bp
EcoRI	6571 bp
BglII + EcoRI	5213 1358 bp

Electrophoresis : 1% agarose gel, 1x TAE Buffer

Marker : 2-Log DNA Ladder



● Adjust plasmid DNA solution to 25 ng/ul

Date : 140502

DNA (<u>93</u> ng/ul)	<u>40.0</u> ul
10x TE	<u>14.9</u> ul
dH ₂ O	<u>93.9</u> ul
Total	<u>148.8</u> ul

● Shipping

Conc. : 25 ng/μl, Volume : 40 μl

~~Conc. : _____ ng/μl, Volume : _____ μl~~

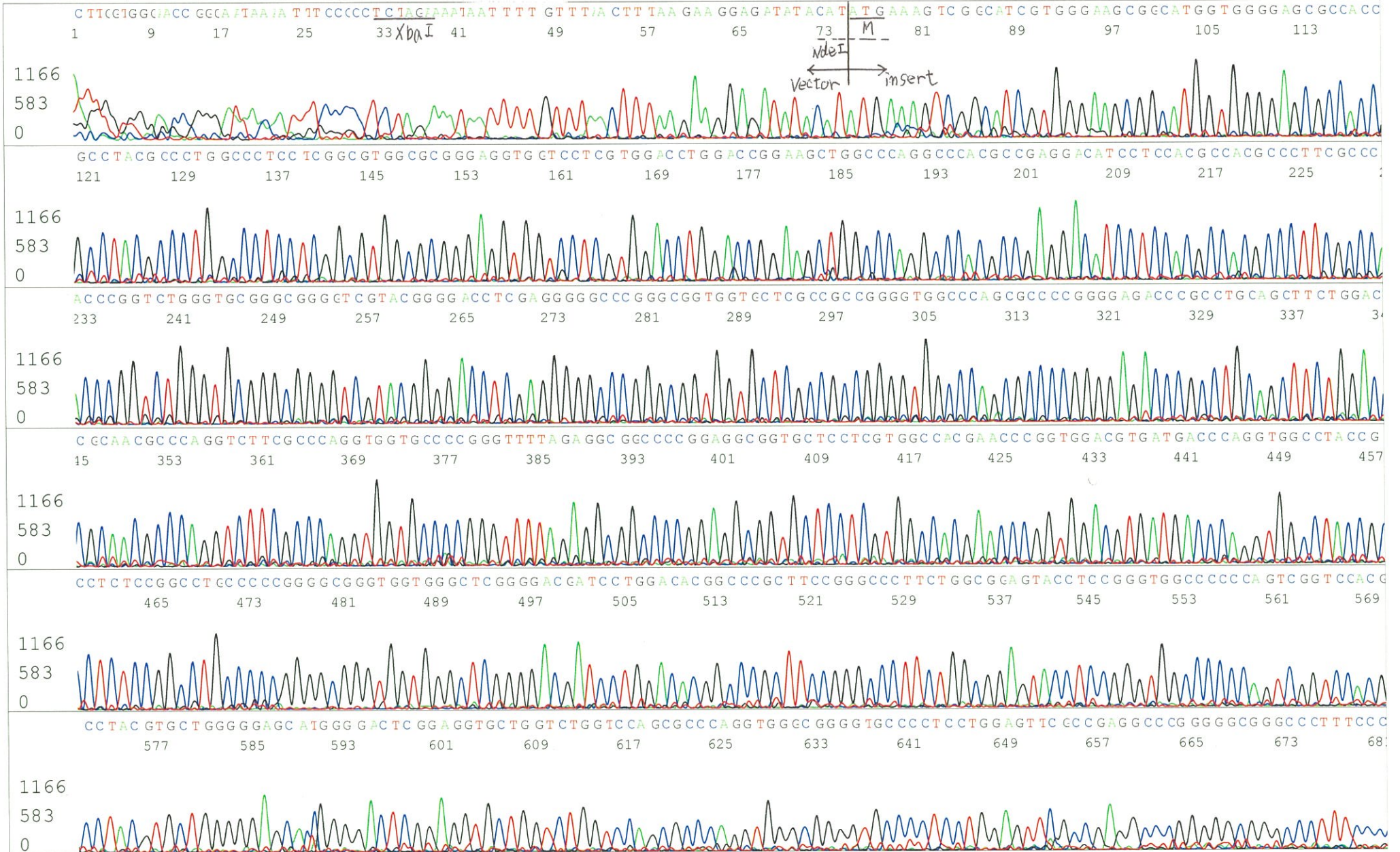
APPROVED BY :



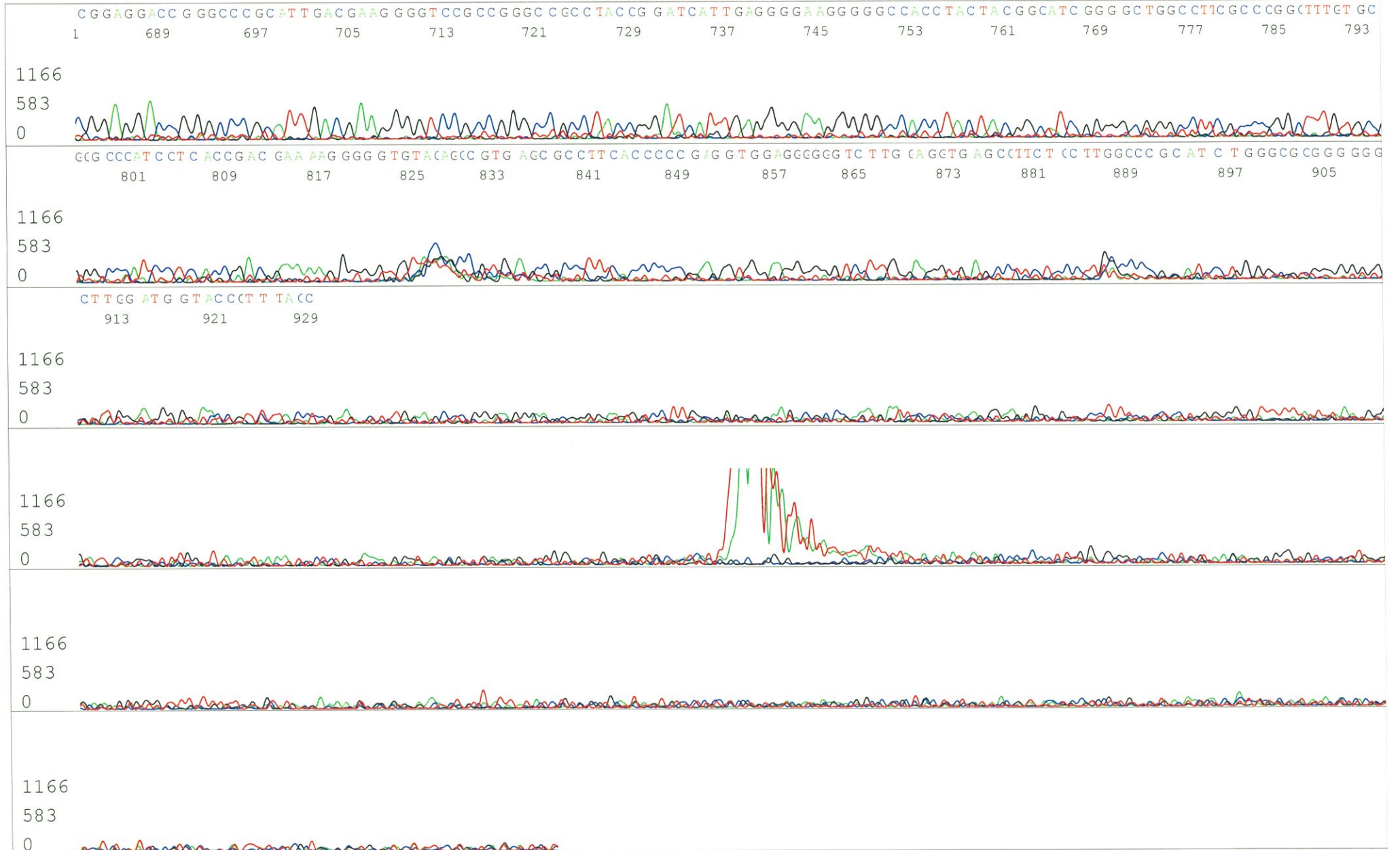
S/N G:11 A:9 T:7 C:11
KB.bcp
KB 1.4.1.8 Cap:21

Primer A : T7 long

5' CGCCAAGCTCTAATACGACTCACTATAGGG 3'

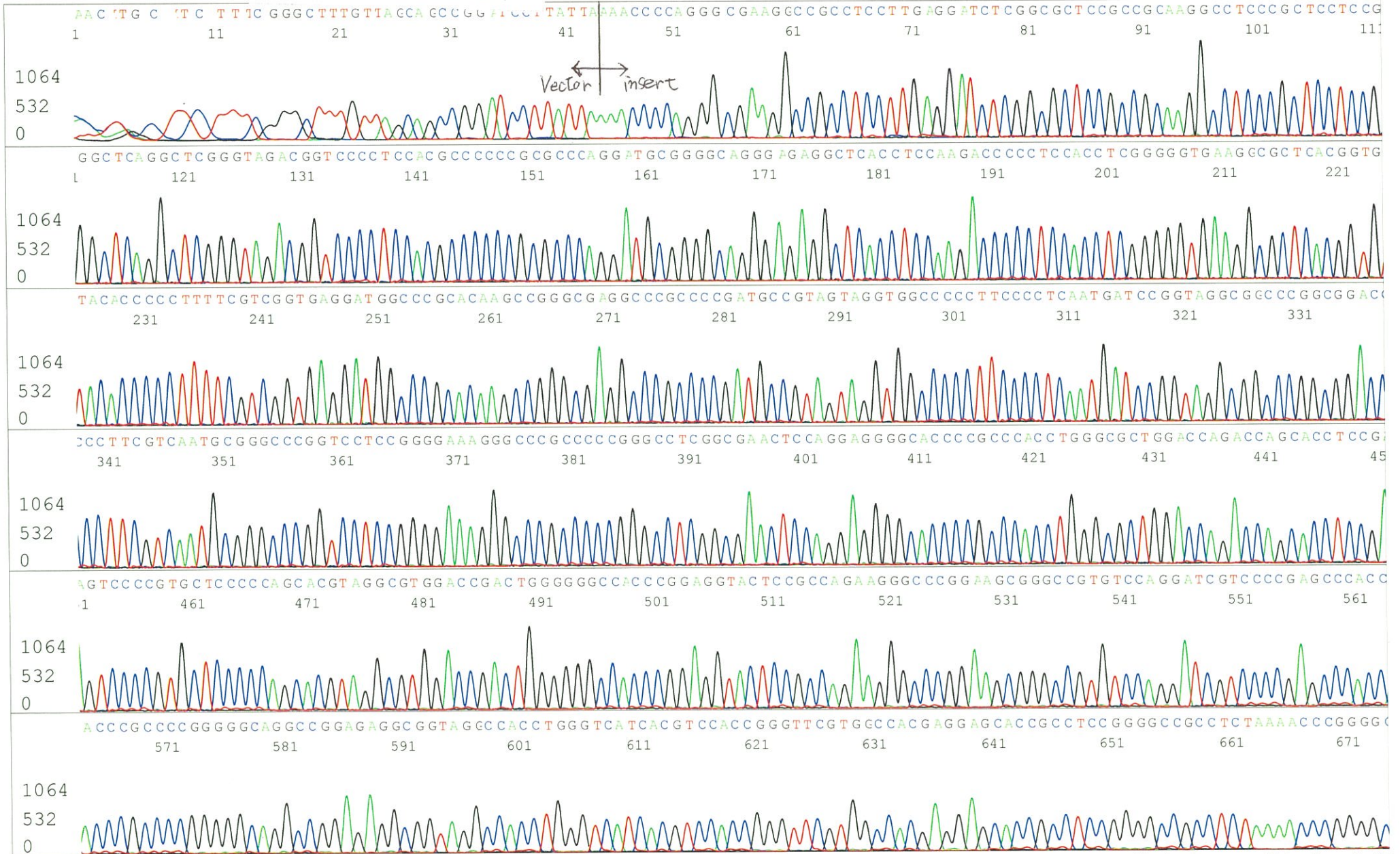


S/N G:11 A:9 T:7 C:11
KB.bcp
KB 1.4.1.8 Cap:21



S/N G:132 A:88 T:60 C:143
KB.bcp
KB 1.4.1.8 Cap:19

Primer B : T7 terminator
5' GCTAGTTATTGCTCAGCGG 3'



S/N G:132 A:88 T:60 C:143
KB.bcp
KB 1.4.1.8 Cap:19

