

RIKEN Clone ID : TEx04A12 (PC016001-41)

Lot# : 6078_B1Lf

Vectcr : pET-11a

Locus tag	TTHC001
Insert size	1161 bp
Product	putative RepA protein

● Plasmid DNA purification

Date : 21.12.15

Culture : LB (100 ug/ml Ampicillin) 10 ml -> 37°C O/N

Date : 21.12.16

Purification : QIAGEN Miniprep kit -> dH₂O 50 ul

● Digestion by restriction enzyme/Concentration calibration

Date : 21.12.16

DNA concentration (O.D.): 79 ng/ul

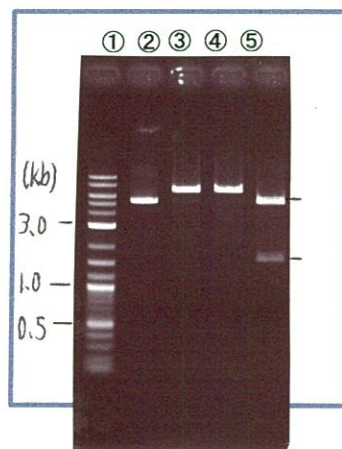
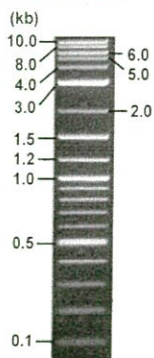
DNA	<u>1.3</u> ul
Enzyme (BglII + EcoRI)	<u>0.5 + 0.5</u> ul
Buffer H	<u>1</u> ul
dH ₂ O	<u>6.7</u> ul
Total	<u>10</u> ul

< Size of fragment expected from this clone >

BglII	6.8 kb
EcoRI	6.8 kb
BglII + EcoRI	5.2, 1.6 kb

Electrophoresis : 1% agarose gel, 1x TAE Buffer

Marker : 2-Log DNA Ladder



- ①:Marker
- ②:uncut
- ③:BglII
- ④:EcoRI
- ⑤:BglII + EcoRI

● Adjust plasmid DNA solution to 25 ng/ul

Date : 21.12.21

DNA (<u>79</u> ng/ul)	<u>32.0</u> ul
10x TE	<u>10.1</u> ul
dH ₂ O	<u>59.0</u> ul
Total	<u>101.1</u> ul

● Shipping

- Conc. : 25 ng/μl, Volume : 40 μl
- Conc. : _____ ng/μl, Volume : _____ μl

APPROVED BY :



S/N G:135 A:97 T:47 C:119

6078_TEx04A12_B1Lf_T7 long

Dec 16,2021 03:08PM, JST

KB.bcp

Primer A : T7 long

KB_3500_POP7_BDTv3.mob

Gray line indicates quality value

Dec 16,2021 03:23PM, JST

KB 1.4.1.8 Cap:1

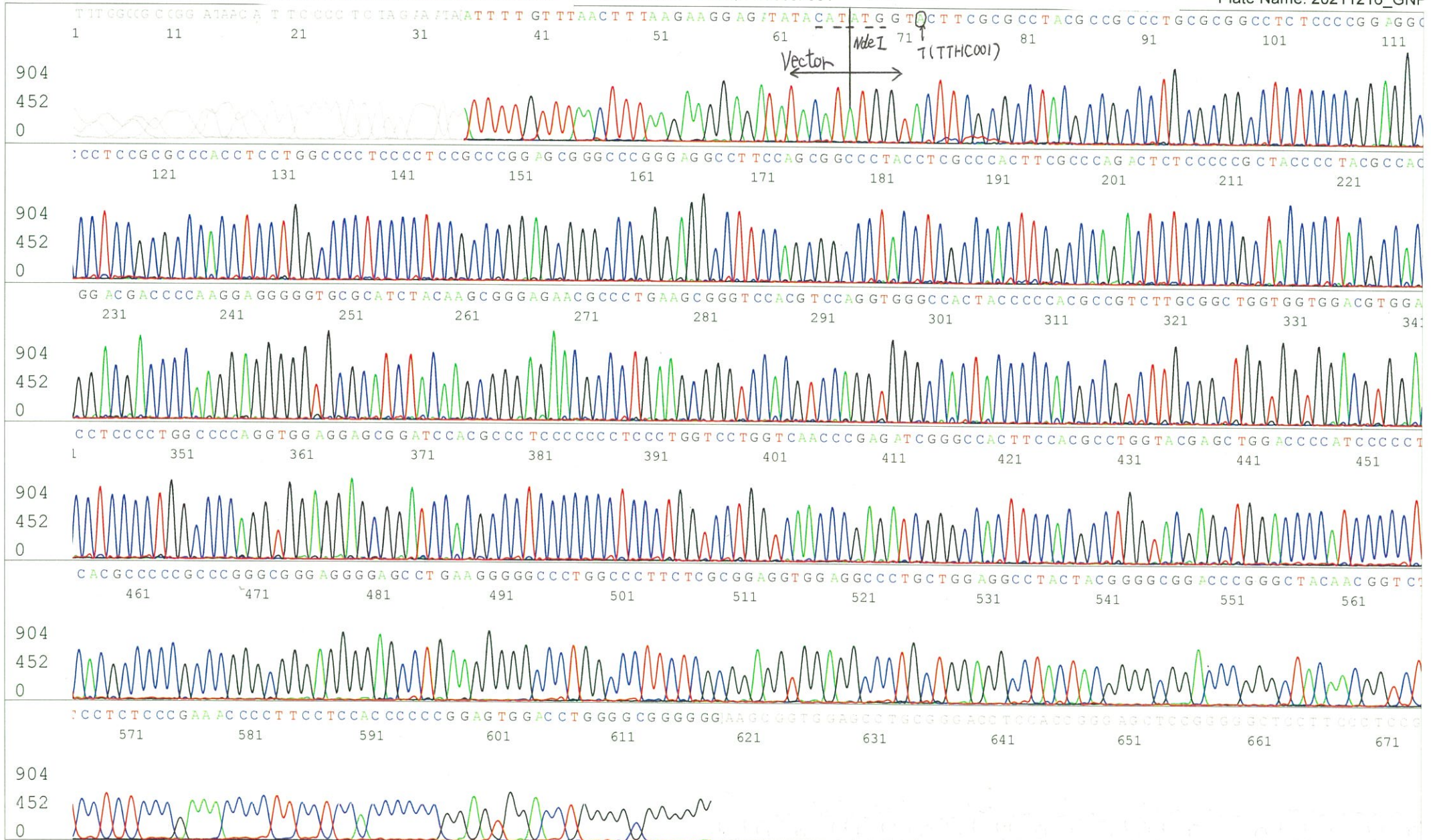
5' CGCCAAGCTCTAATACGACTCACTATAGGG 3'

Pts 1703 to 8705 PK1 Loc:1671

(QV) < 40.

Spacing:10.53 Pts/Panel1350

Plate Name: 20211216_GNP



S/N G:41 A:25 T:15 C:33
KB.bcp
KB 1.4.1.8 Cap:2

Primer B : T7 terminator
5' GCTAGTTATTGCTCAGCGG 3'

6078_TEx04A12_B1Lf_T7 terminator_B01_02_ABI08
6078_TEx04A12_B1Lf_T7 terminator
KB_3500_POP7_BDTv3.mob
Pts 1693 to 8705 Pk1 Loc:1661
Version 6.0 HiSQV Bases: 669 (QV) < 40.

Inst Model/Name 3500/3500 Instrument
Dec 16,2021 03:08PM, JST
Dec 16,2021 03:23PM, JST
Spacing:10.49 Pts/Panel1350
Plate Name: 20211216_GNP

Gray line indicates quality value

