

T. Th Disruption Plasmid

RDB 7723

plate ID	TDs11E01
Target gene locus Tag	TTHB149
Vector	pGEM-T easy derivative vector
Antibiotics	Amp / Km
Competent Cell	Stbl2 (Incubate at 30 deg C)

● Transformation/Culture

Date : 110322

Competent cell (Stbl2) 10.0 ul
Plasmid DNA 0.5 ul

Colony count	1-5	
	6-50	
	up to 51	○

Plating to LB agar plate with Antibiotics and culture O/N at 30 deg C

Pick up some colonies and culture O/N at 30 deg C (5 ml LB with Amp)

● Plasmid DNA purification/Concentration calibration

Date : 110324

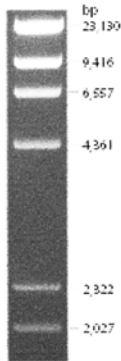
Purification : QIAGEN Miniprep Kit -> dH₂O 100 ul

DNA Concentration (O.D.) 59.59 ng/ul

● Digestion by Restriction enzyme

Date : 110324

DNA	1 ul
EcoRI	1 ul
Buffer H	1 ul
dH ₂ O	7 ul
Total	10 ul



Marker : Lambda/HindIII digest

Size marker : Lambda/HindIII 250 ng/well

● Adjust plasmid DNA solution to 25 ng/ul ~preparation for shipping~

Date : 110324

Shipped : 25 ng/ul, 40 ul

DNA (59.59 ng/ul)	80.0 ul
10x TE	19.1 ul
dH ₂ O	91.6 ul
Total	190.7 ul

S/N G:248 A:161 T:175 C:185

KB.bcp

KB 1.4.1.8 Cap:22

TTHD11E01a.seq

KB_3500_POP7_BDTV3.mob

Pts 1282 to 12908 Pk1 Loc:1259

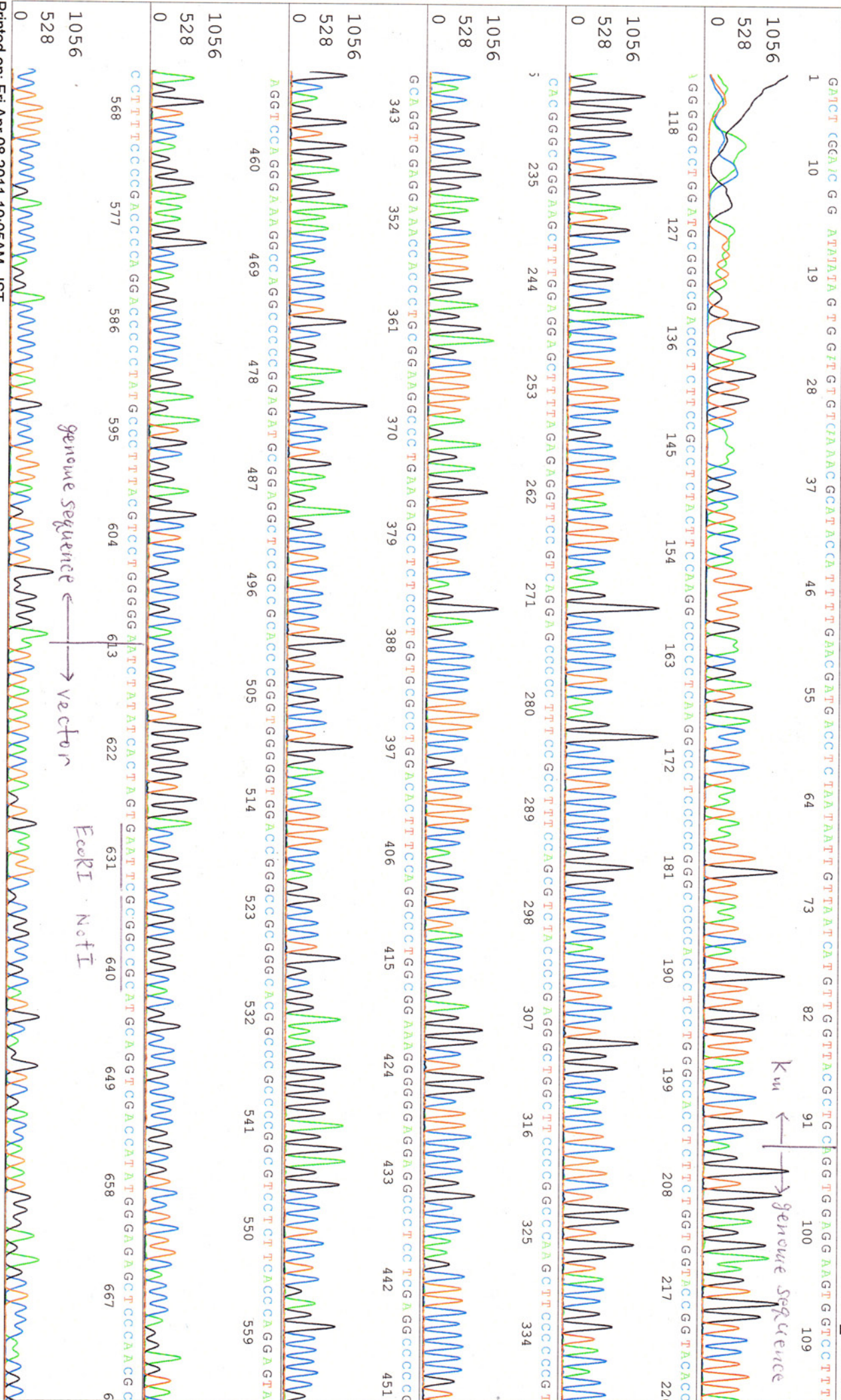
Version 5.4 HiSQV Bases: 1015

Apr 07,2011 09:54AM, JST

Apr 07,2011 10:21AM, JST

Spasing: 11.48 Pts/Panel1350

Plate Name: 20110407_hakaikabu



Primer b

Km ←
→ sequence

