

**T. Th Disruption Plasmid**

**RDB 7723**

Lot# 7723 A6De

plate ID	TDs09A11
Target gene locus Tag	TTHA1818
Vector	pGEM-T easy derivative vector
Antibiotics	Amp / Km
Competent Cell	Stbl2 (Incubate @ 30 deg)

● **Plasmid DNA purification/Concentration calibration**

Date : 2016.04.14

Culture : LB (100 ug/mL Amp, 30ug/mL Km) 10 ml -> O/N @ 30 deg

Date : 2016.04.15

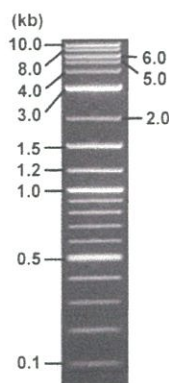
Purification : QIAGEN Miniprep Kit -> dH<sub>2</sub>O 50 ul

● **Digestion by Restriction enzyme**

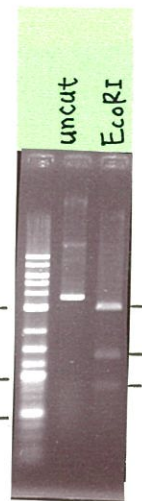
Date : 2016.04.15

DNA Concentration (O.D.) 98 ng/ul

DNA	1 ul
EcoRI	1 ul
Buffer H	1 ul
dH <sub>2</sub> O	7 ul
Total	10 ul



Marker : 2-Log DNA Ladder (NEB#N3200L)



Size marker : 125 ng/well

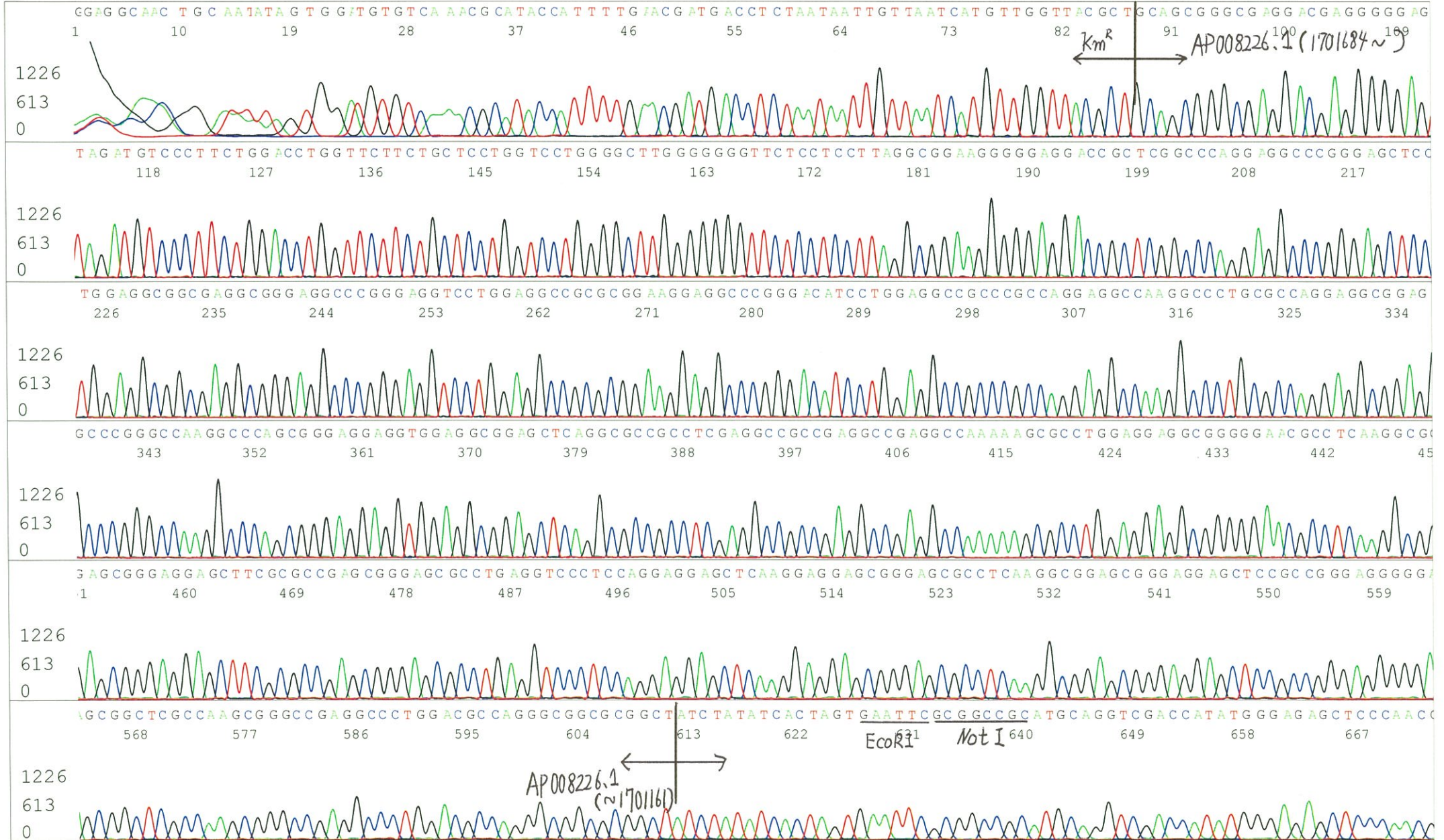
● **Adjust plasmid DNA solution to 25 ng/ul ~preparation for shipping~**

Date : 2016.04.19

Shipped : 25 ng/ul, 40 ul

DNA (98 ng/ul)	40.0 ul
10x TE	15.7 ul
dH <sub>2</sub> O	101.1 ul
Total	156.8 ul

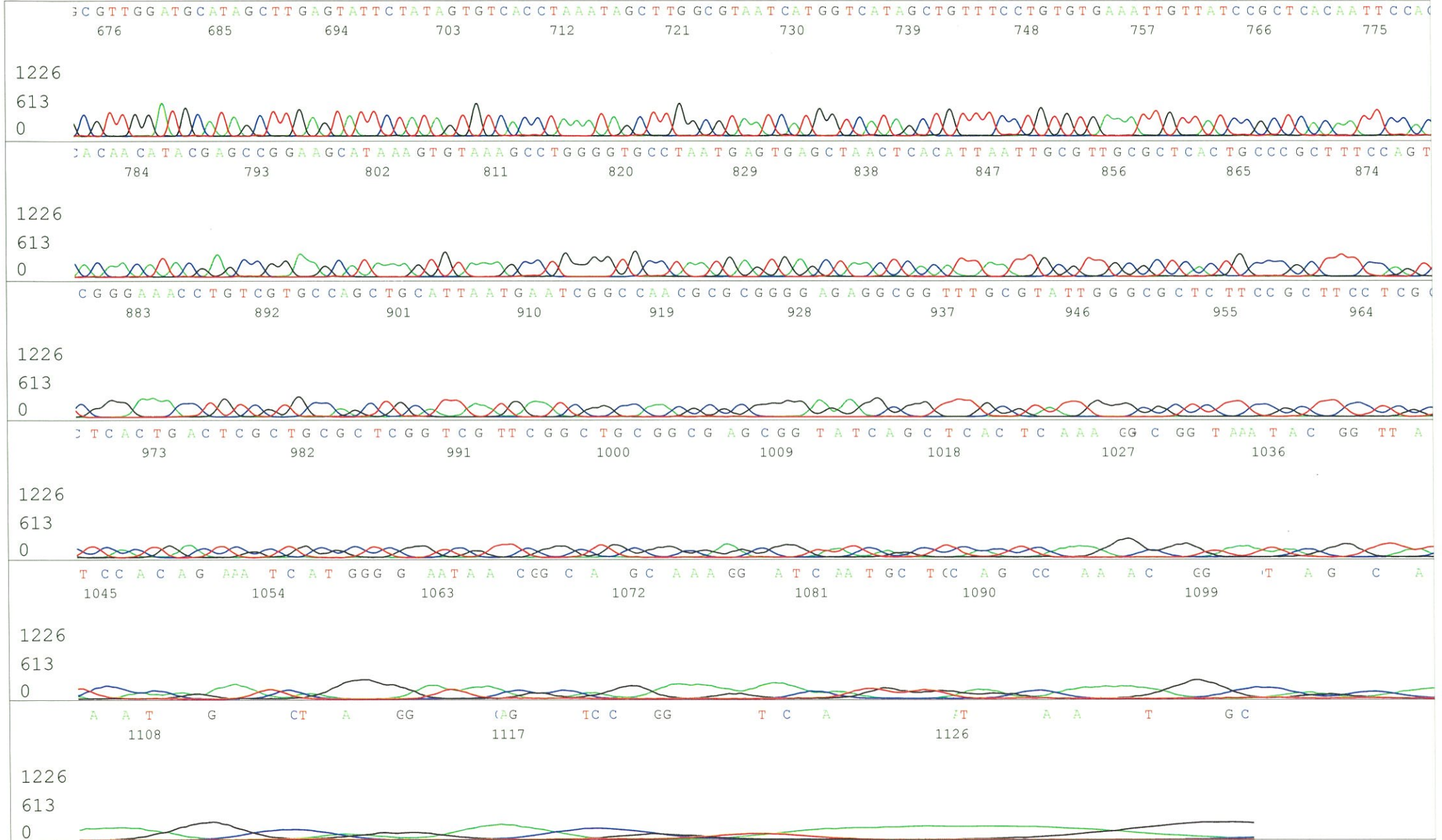




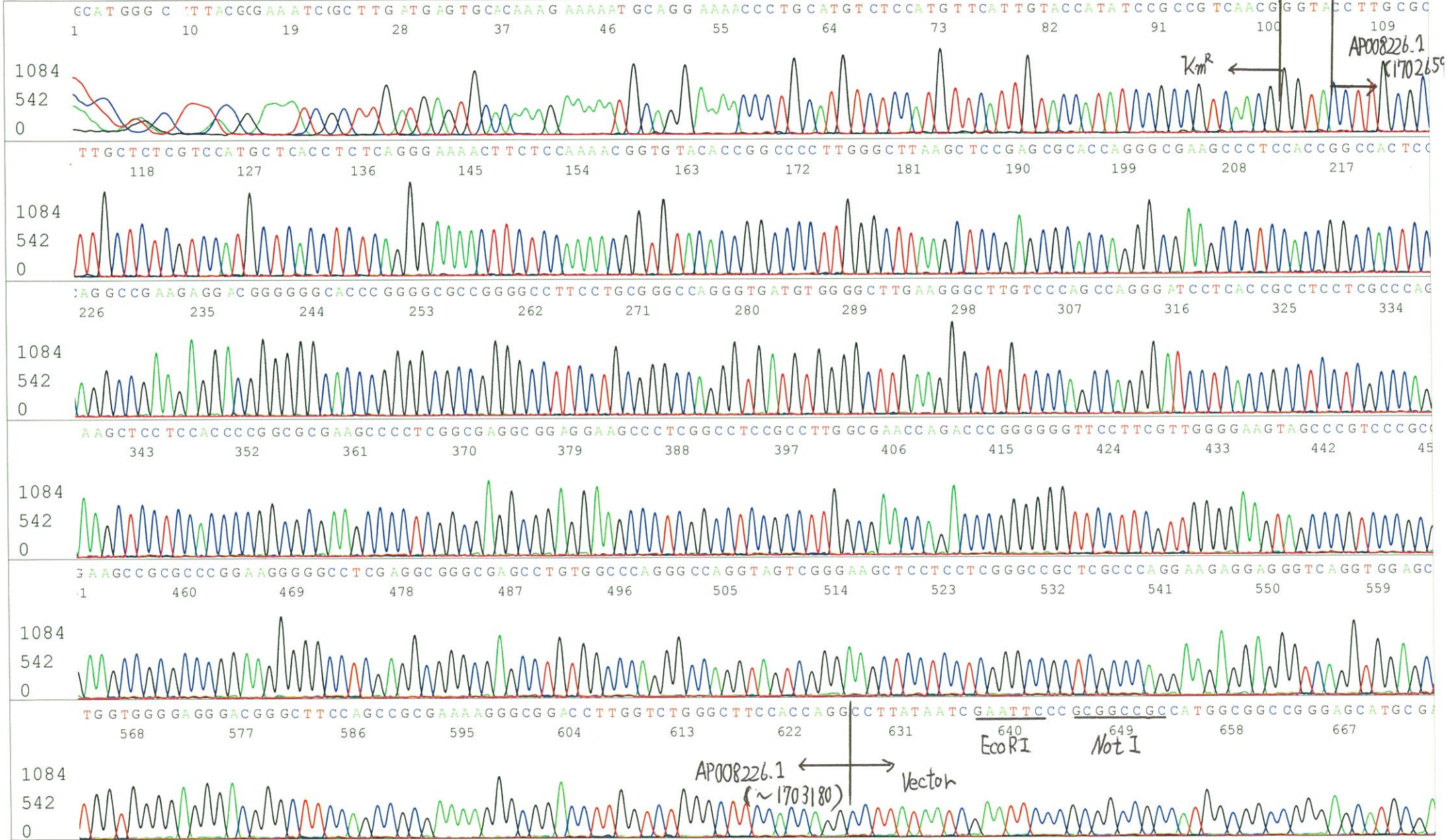
S/N G:627 A:544 T:294 C:524  
KB.bcp  
KB 1.4.1.8 Cap:14

7723\_TDs09A11\_A6De\_Km\_F\_E11\_14  
7723\_TDs09A11\_A6De\_Km\_F  
KB\_3500\_POP7\_BDTv3.mob  
Pts 1470 to 12832 Pk1 Loc:1447  
Version 6.0 HiSQV Bases: 983

Inst Model/Name 3500/3500 Instrument  
Apr 19,2016 09:41AM, JST  
Apr 19,2016 10:07AM, JST  
Spacing:11.31 Pts/Panel1350  
Plate Name: 20160419\_mix



S/N G:161 A:134 T:118 C:206  
KB.bcp  
KB 1.4.1.8 Cap:17



S/N G:161 A:134 T:118 C:206  
KB.bcp  
KB 1.4.1.8 Cap:17

7723\_TDs09A11\_A6De\_Km\_R\_F11\_17  
7723\_TDs09A11\_A6De\_Km\_R  
KB\_3500\_POP7\_BDTv3.mob  
Pts 1483 to 12891 Pk1 Loc:1460  
Version 6.0 HiSQV Bases: 1010

Inst Model/Name 3500/3500 Instrument  
Apr 19,2016 09:41AM, JST  
Apr 19,2016 10:07AM, JST  
Spacing:11.33 Pts/Panel1350  
Plate Name: 20160419\_mix

