

T. Th Disruption Plasmid

RDB 7723

Lot# 7723 A6Gr

plate ID	TDs02E02
Target gene locus Tag	TTHA0228
Vector	pGEM-T easy derivative vector
Antibiotics	Amp /
Competent Cell	Stbl2 (Incubate @ 30 deg)

● Plasmid DNA purification/Concentration calibration

Date: 160809

Culture: LB (100 ug/mL Amp, 30ug/mL Km) 10 ml -> O/N @ 30 deg

Date: 160810

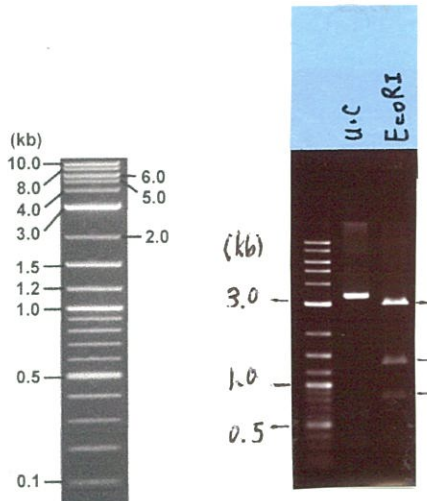
Purification: QIAGEN Miniprep Kit -> dH₂O 50 ul

● Digestion by Restriction enzyme

Date: 160810

DNA Concentration (O.D.) 189 ng/ul

DNA	0.5	ul
EcoRI	1	ul
Buffer H	1	ul
dH ₂ O	7.5	ul
Total	10	ul



Marker: 2-Log DNA Ladder (NEB#N3200L)

Size marker: 125 ng/well

● Adjust plasmid DNA solution to 25 ng/ul ~preparation for shipping~

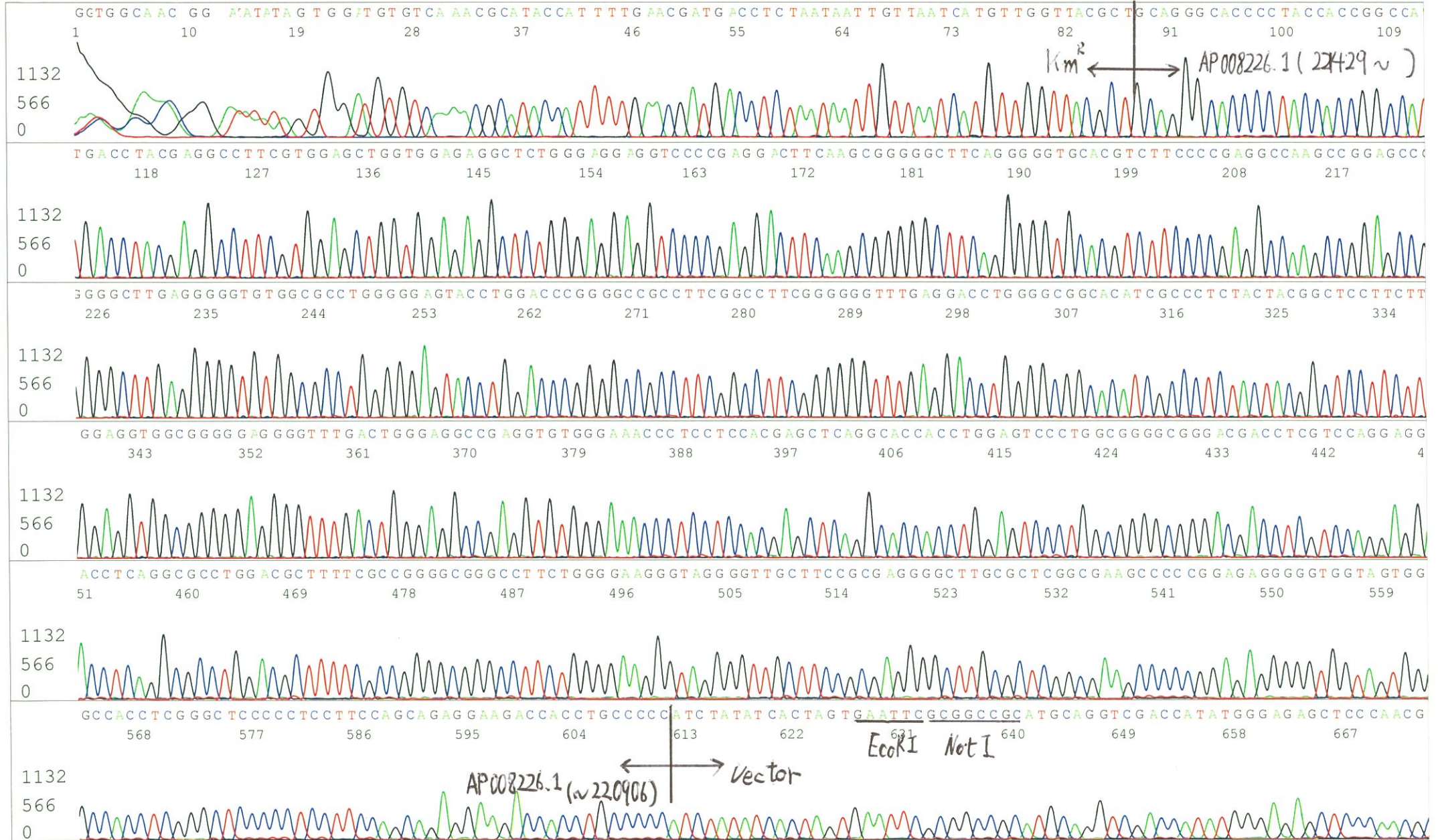
Date: 160810

Shipped: 25 ng/ul, 40 ul

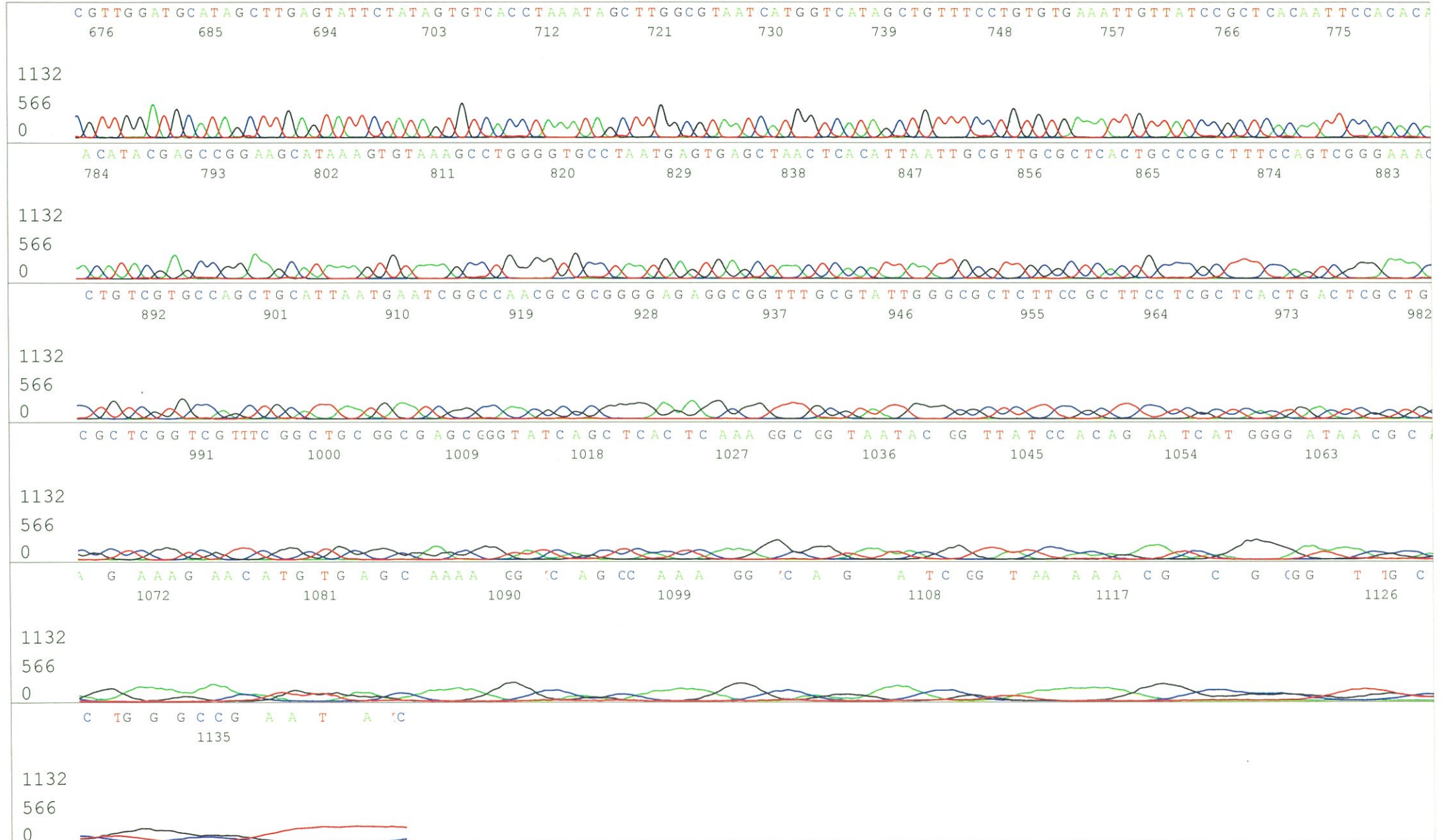
DNA (<u>189</u> ng/ul)	<u>48.0</u>	ul
10x TE	<u>36.3</u>	ul
dH ₂ O	<u>278.6</u>	ul
Total	<u>362.9</u>	ul



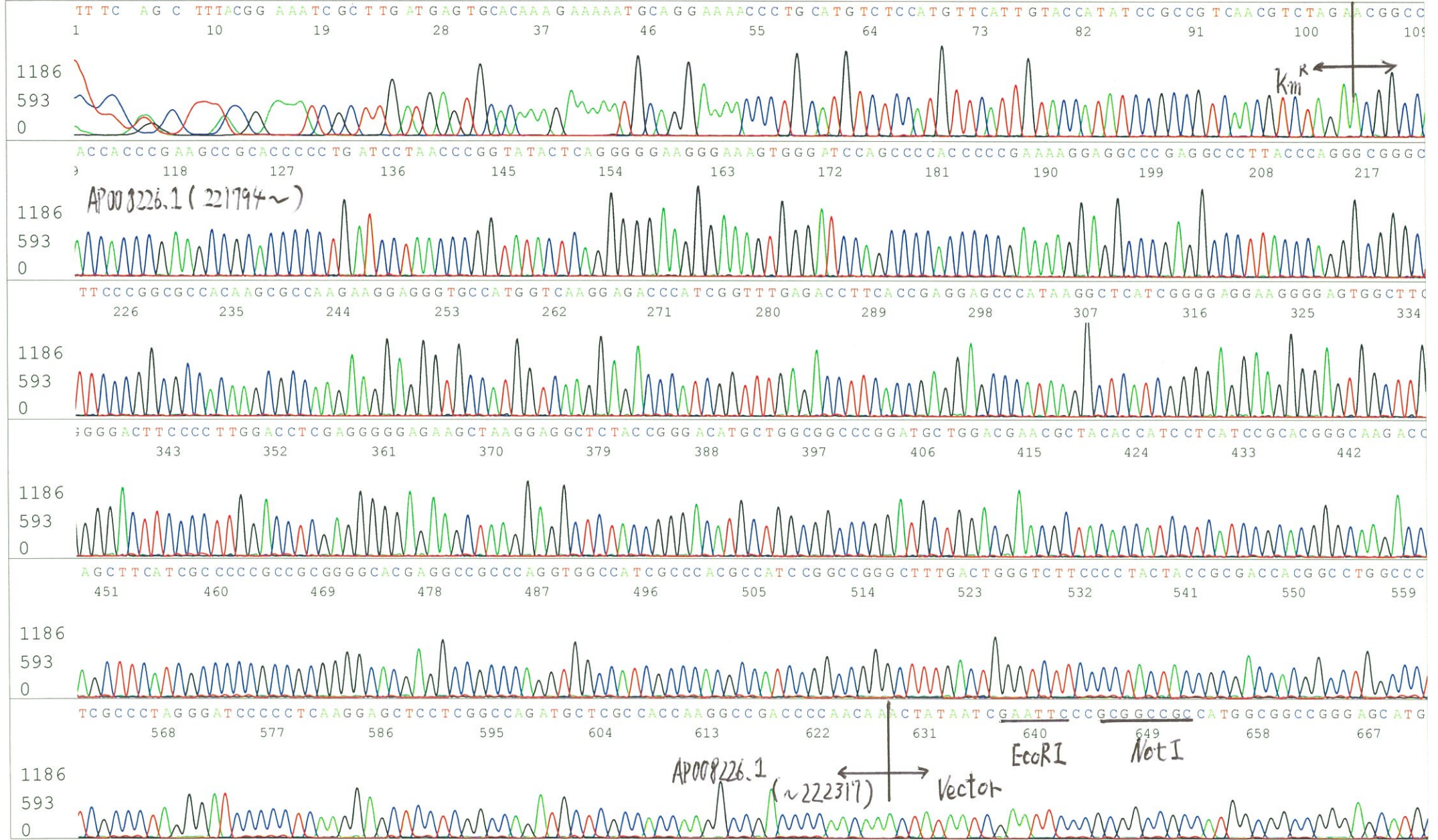
S/N G:262 A:189 T:182 C:266
KB.bcp
KB 1.4.1.8 Cap:1



S/N G:262 A:189 T:182 C:266
KB.bcp
KB 1.4.1.8 Cap:1



S/N G:350 A:292 T:258 C:443
KB.bcp
KB 1.4.1.8 Cap:4



S/N G:350 A:292 T:258 C:443
KB.bcp
KB 1.4.1.8 Cap:4

7723_TDs02E02_A6Gr_Amp_Km_R_B10_04
7723_TDs02E02_A6Gr_Amp_Km_R
KB_3500_POP7_BDTv3.mob
Pts 1410 to 12790 Pk1 Loc:1387
Version 6.0 HiSQV Bases: 1000

Inst Model/Name 3500/3500 Instrument
Aug 10,2016 02:17PM, JST
Aug 10,2016 02:43PM, JST
Spacing:11.35 Pts/Panel1350
Plate Name: 20160810_mix

