

RIKEN_Clone ID : SpYFH46G03

Vector : pDual-YFH1c

Systematic Name	SPBC16G5.15c
ORF length	2221 bp

● Plasmid DNA purification

Date : 121206

Culture : LB (100 ug/ml Ampicillin) 5 ml → 37°C O/N

Date : 121207

Purification : QIAGEN Miniprep kit → dH₂O 100 ul

● Digestion by restriction enzyme/Concentration calibration

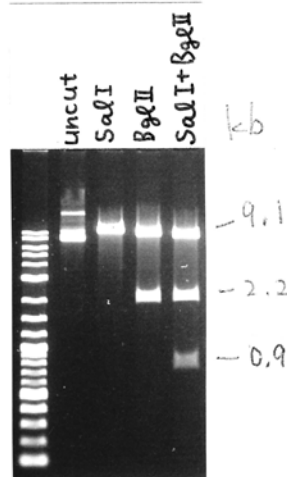
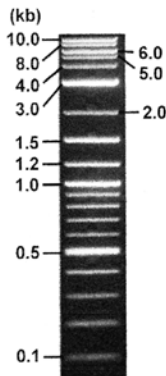
Date : 121207

DNA concentration (O.D.): 165 ng/ul

DNA	0.3 ul
Enzyme (SalI + BglII)	0.5 + 0.5 ul
Buffer H	1 ul
dH ₂ O	7.7 ul
Total	10 ul

Erectrophoresis : 0.8% agarose gel, 1x TAE Buffer

Marker : 2-Log DNA Ladder (NEB#N3200L)



<Expected digestion pattern from SpYFH46G03 >

9117, 2218, 853 bp

● Adjust plasmid DNA solution to 25 ng/ul ~preparation for shipping~

Date : 121218

Shipping amount : 40 ul

Concentration at the time of preparation of plasmid DNA : 25 ng/ul

DNA (<u>165</u> ng/ul)	85 ul
10x TE	56 ul
dH ₂ O	420 ul
Total	561 ul

APPROVED BY :

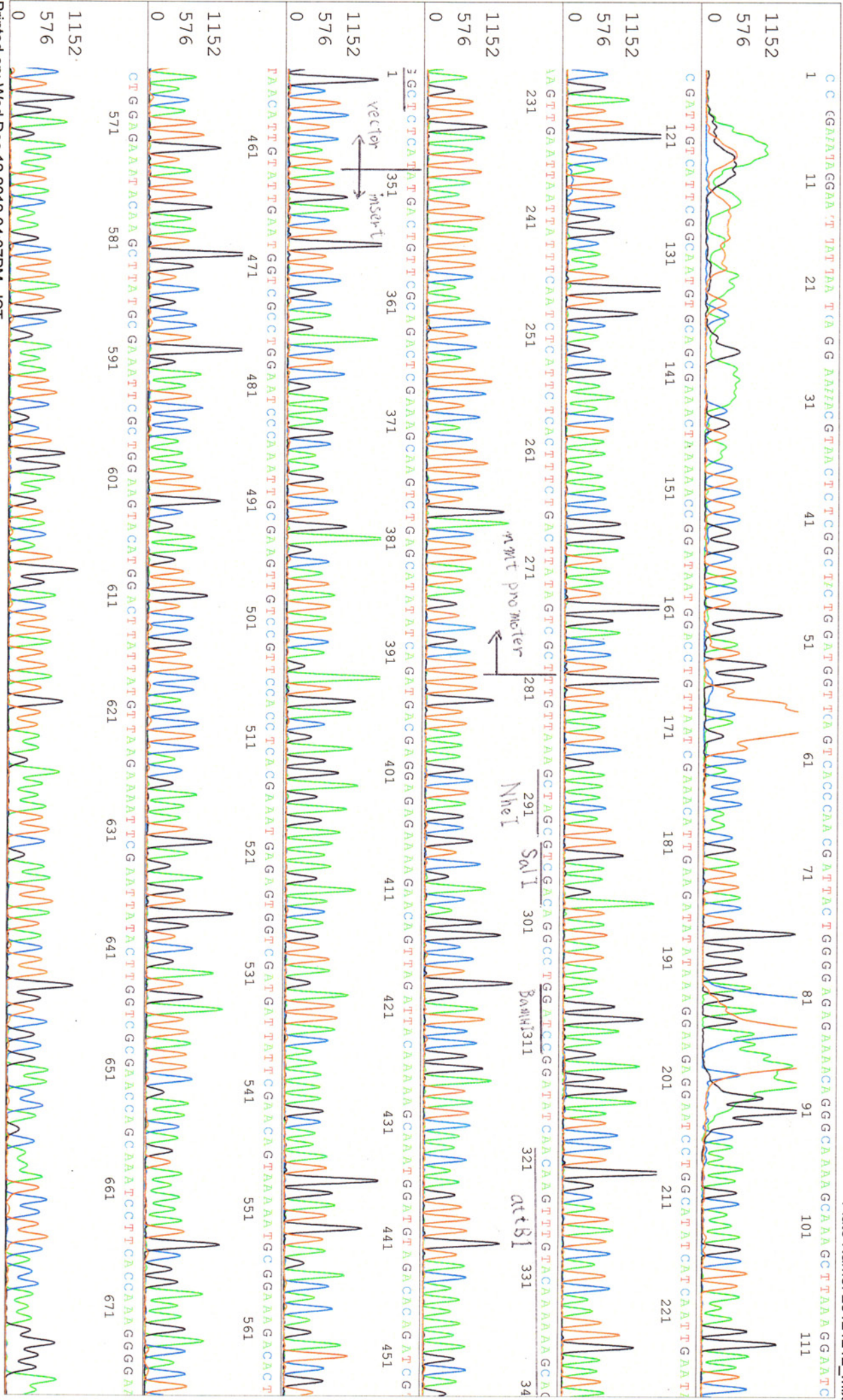


SN G:37 A:40 T:30 C:23
 KB bcp
 KB 1.4.1.8 Cap:19

Primer A : nmtI-F
 5' GCTGTAAACACCGACGAGAC 3'

6107_SpYFH46G03_nmt1Fw_G10_19
 6107_SpYFH46G03_nmt1Fw
 KB_3500_POP7_BDTV3.mob
 Pts 1227 to 13649 Pk1 Loc:1204
 Version 5.4 HiSQV Bases: 1038

Inst Model/Name 3500/3500 Instrument
 Dec 12,2012 02:33PM, JST
 Dec 12,2012 02:59PM, JST
 Spacing: 12.19 Pts/Panel1350
 Plate Name: 20121212_mix



S/N G:204 A:180 T:226 C:147
KB bcp
KB 1.4.1.8 Cap:22
Primer B : YFP-R
5' GAACCTTCAGGGTTCAGGCTTGC 3'

6107_SpYFH46G03_YFP_R_H10_22
6107_SpYFH46G03_YFP_R
KB_3500_POP7_BDTv3.mob
Pls 1306 to 13864 Pk1 Loc:1283
Version 5.4 HISQV Bases: 1008

Inst Model/Name 3500/3500 Instrument
Dec 12,2012 02:33PM, JST
Dec 12,2012 02:59PM, JST
Spacing:12.38 Pts/Panel1350
Plate Name: 20121212_mix

