

**RIKEN Clone ID : SpFFH46B08**

Vector : pDual-FFH1c

Systematic Name	SPAC22A12.08c
ORF length	1931 bp

● Plasmid DNA purification

Date : 150805

Culture : LB (100 ug/ml Ampicillin) 5 ml → 37°C O/N

Date : 150806

Purification : QIAGEN Miniprep kit → dH<sub>2</sub>O 100 ul

● Digestion by restriction enzyme/Concentration calibration

Date : 150806

DNA concentration (O.D.): 357 ng/ul

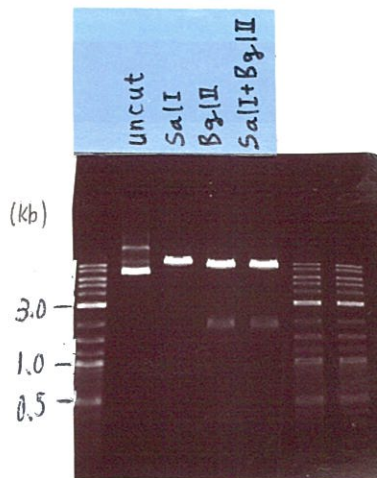
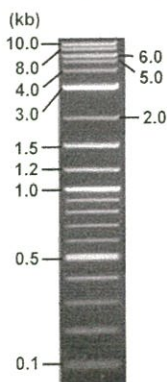
< Size of fragment expected from this clone >

DNA	0.15	ul
Enzyme (SalI + BglII)	0.5 + 0.5	ul
Buffer H	1	ul
dH <sub>2</sub> O	7.85	ul
Total	10	ul

SalI	11.2	kb
BglII	9.2, 2.0	kb
SalI + BglII	9.1(v), 2.0, 0.1	kb

Electrophoresis : 0.8% agarose gel, 1x TAE Buffer

Marker : 2-Log DNA Ladder (NEB#N3200L)



● Adjust plasmid DNA solution to 25 ng/ul

Date : 150806

DNA (357 ng/ul)	88.0	ul
10x TE	125.7	ul
dH <sub>2</sub> O	1042.9	ul
Total	1256.6	ul

● Shipping



Conc. : 25 ng/μl, Volume : 40 μl

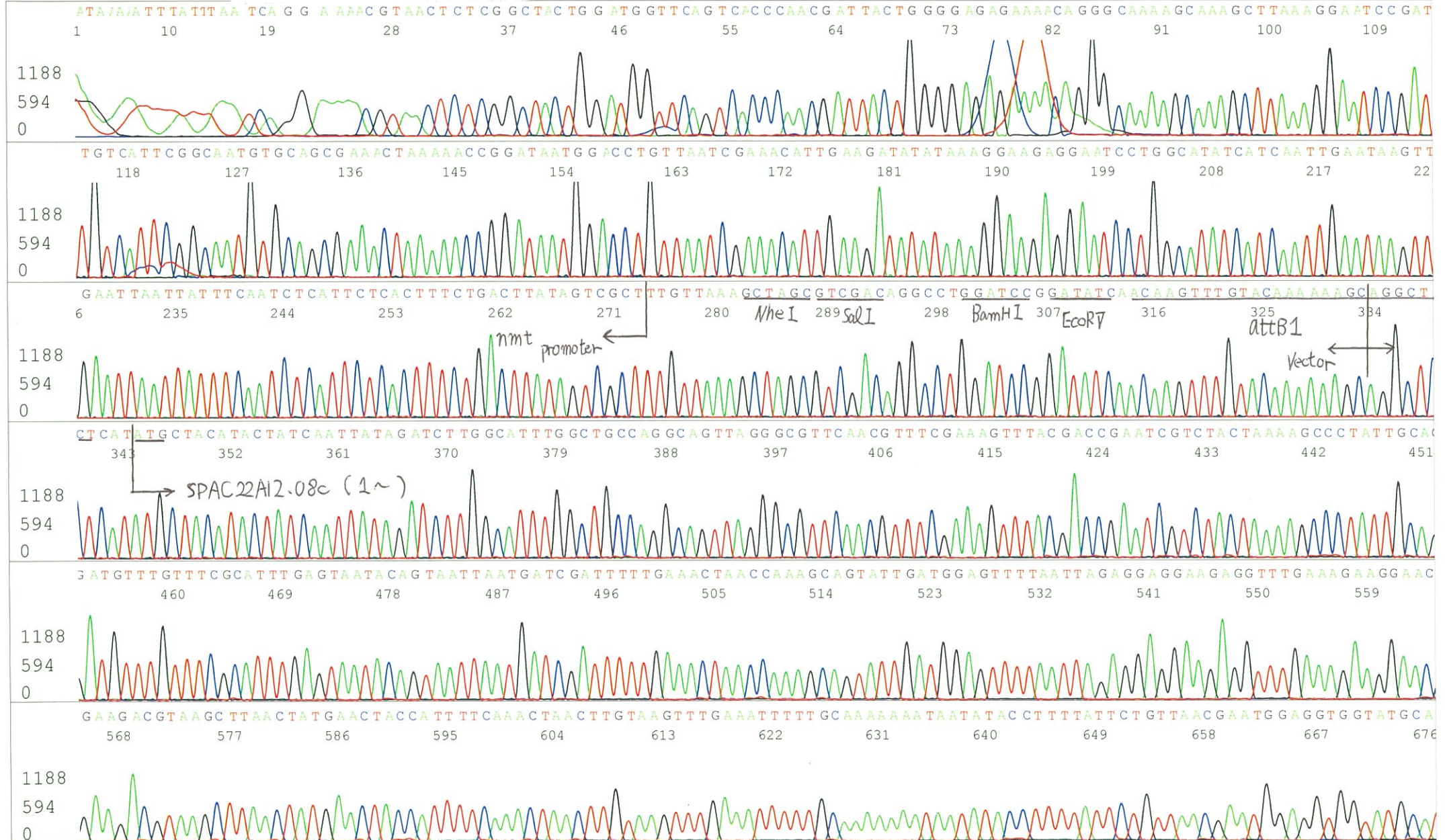


Conc. : \_\_\_\_\_ ng/μl, Volume : \_\_\_\_\_ μl

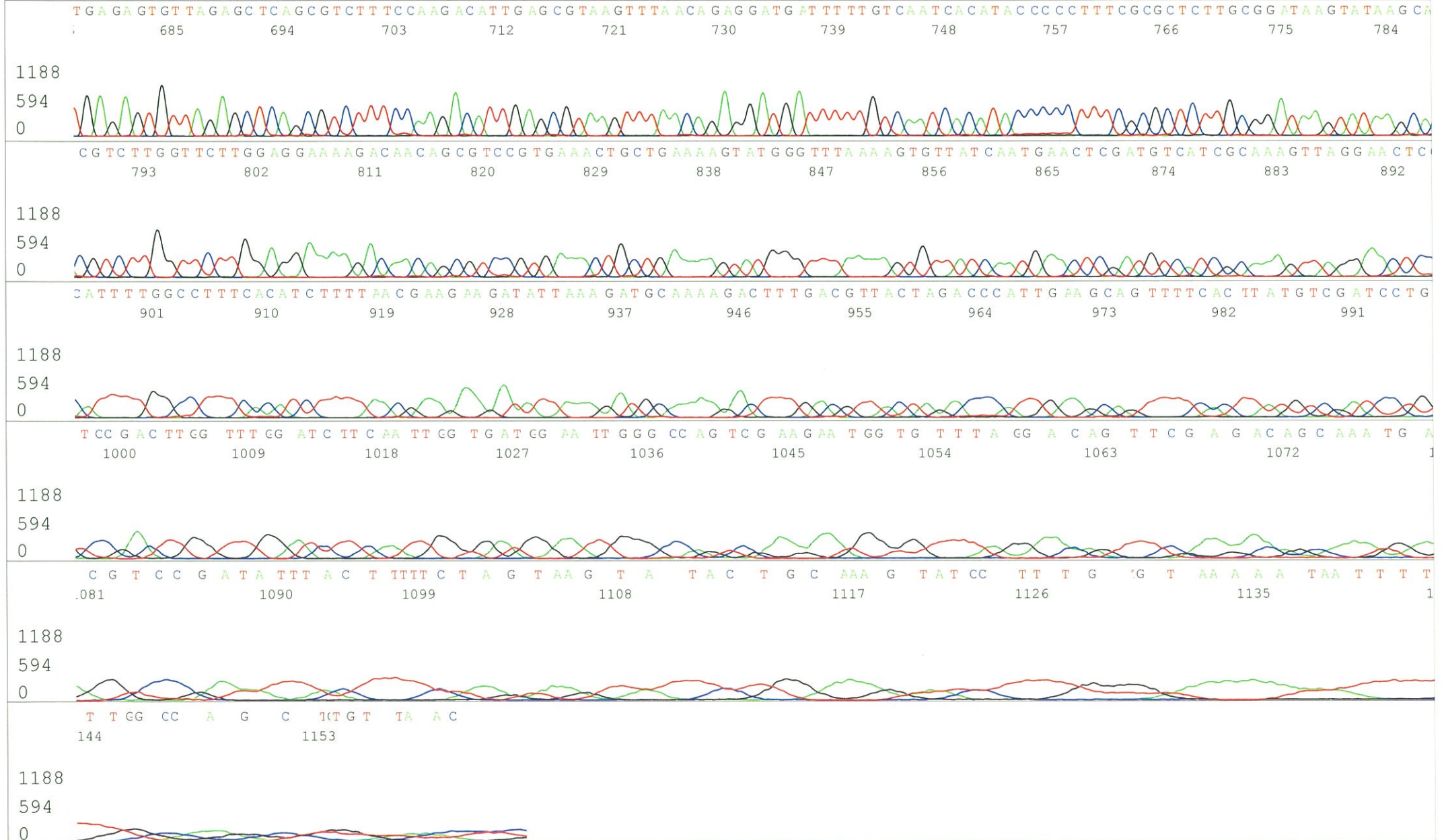
APPROVED BY :



S/N G:255 A:262 T:186 C:130 Primer A : nmt1-F  
 KB.bcp  
 KB 1.4.1.8 Cap:21 5' GCTGTA AAAACACCACGAGAC 3'









S/N G:99 A:105 T:71 C:61

Primer B : ADH rev

6106\_SpFFH46B08\_A5H5\_ADHrev

Aug 06,2015 02:00PM, JST

KB.bcp

KB\_3500\_POP7\_BDTv3.mob

Aug 06,2015 02:27PM, JST

KB 1.4.1.8 Cap:21

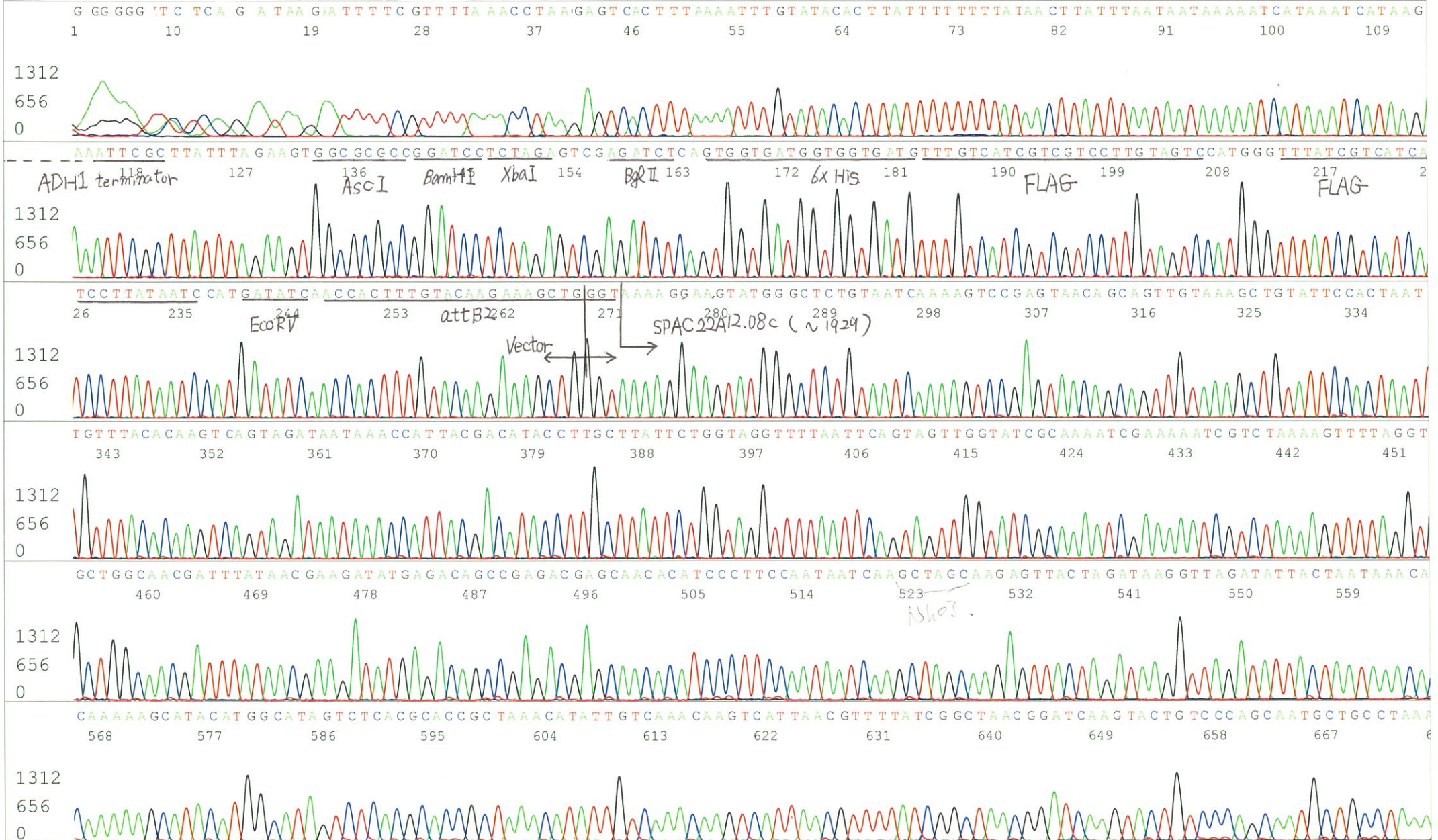
5' CTATACCTGAGAAAGCAACCTGAC 3'

Starts 1318 to 12910 Pk1 Loc:1295

Spacing:11.55 Pts/Panel1350

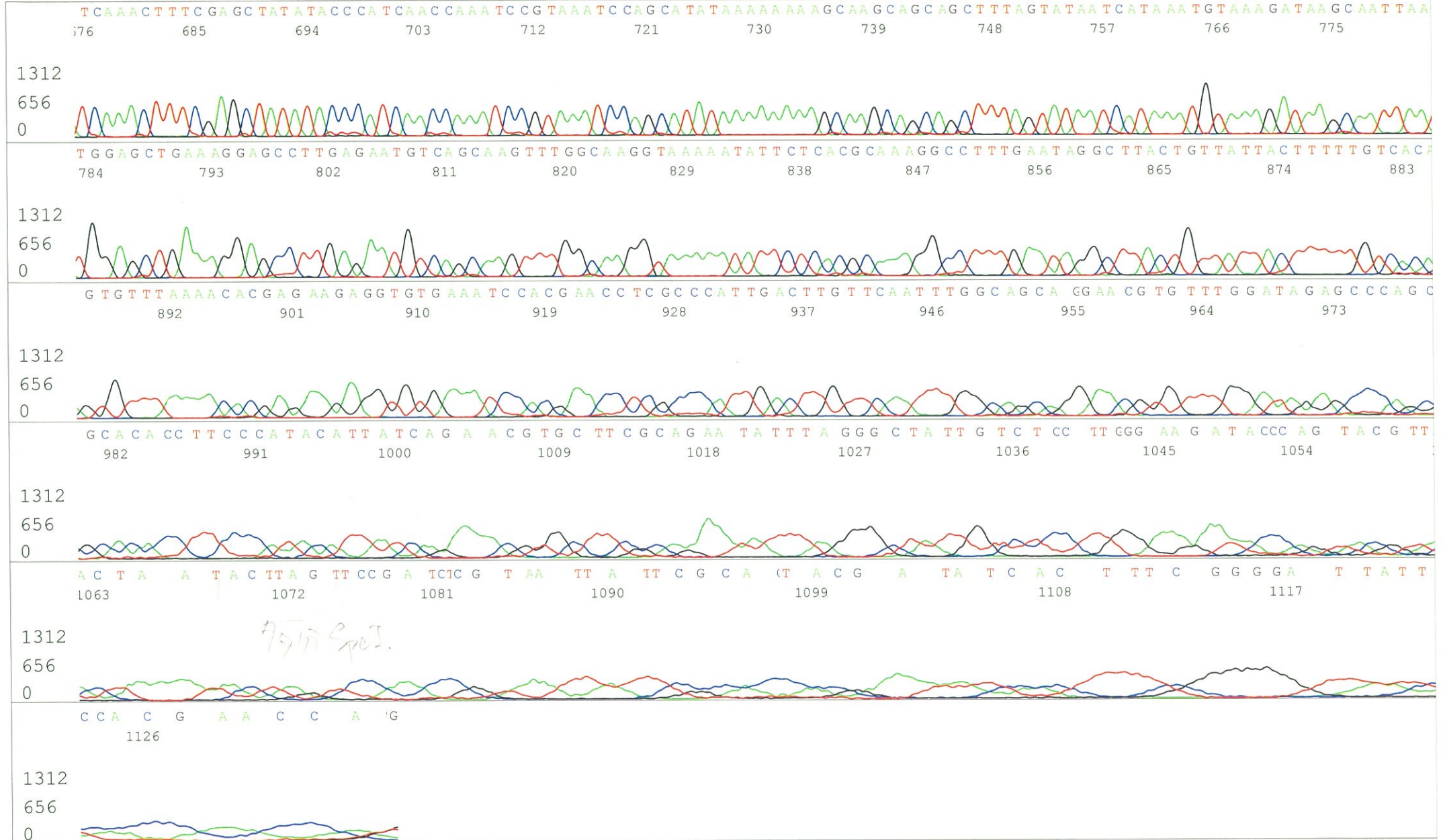
Version 6.0 HiSQV Bases: 1001

Plate Name: 20150806\_mix2





S/N G:99 A:105 T:71 C:61  
KB.bcp  
KB 1.4.1.8 Cap:21



*Handwritten note:* 957D SpI.