

S.pombe ORFeome YFP-FLAG-His tag expression clone

RIKEN clone ID : SpYFH36G05

Vector : pDual-YFH1c

Systematic Name **SPAC3C7.01c**

CDS length **1836 bp**

● Plasmid DNA purification

Date : 111025 Culture : LB (100 ug/ml Ampicillin) 5 ml → 37°C O/N

Date : 111026 Purification : QIAGEN Miniprep kit → dH₂O 100 ul

● Digestion by restriction enzyme / Concentration calibration

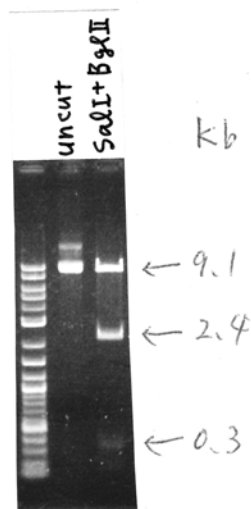
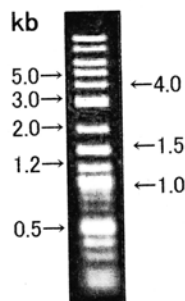
Date : 111026

DNA concentration (O.D.): 239 ng/ul

DNA	0.5 ul
Enzyme (Sal I + Bgl II)	0.5+0.5 ul
Buffer H	1 ul
dH ₂ O	7.5 ul
Total	10 ul

Electrophoresis: 0.8% agarose gel, 1 × TAE Buffer

Marker: 2-Log DNA Ladder (NEB#N3200L)



<Expected digestion pattern from SpYFH36G05>

9117, 2443, 311, 132 bp

● Adjust plasmid DNA solution to 25 ng/ul ~preparation for shipping~

Date : 111102 Shipped : 25 ng/ul, 40 ul

Final concentration: 25 ng/ul

DNA (<u>239</u> ng/ul)	85 ul
10 × TE	81.2 ul
dH ₂ O	646.4 ul
Total	812.6 ul

SN G:556 A:553 T:540 C:485

KB.bcp

KB 1.4.1.8 Cap.9

6107_SpYFH36G05_nmt1Fw

KB_3500_POP7_BDTv3.mob

Pts 1525 to 12814 Pk1 Loc:1502

Version 5.4 HISQV Bases: 767

Oct 28, 2001 12:06PM, JST

Oct 28, 2001 12:33PM, JST

Spacing: 11.39 Pts/Panel1350

Plate Name: 20111028_GNP

