

S.pombe ORFeome YFP-FLAG-His tag expression clone

**RIKEN clone ID: 26G09**

Vector : pDual-YFH1c

|            |                            |
|------------|----------------------------|
| Gene name  | human c19orf29<br>ortholog |
| CDS length | 2002 bp                    |

2211

●Plasmid DNA purification

Date : 110523 Culture : LB (100 ug/ml Ampicillin) 3 ml →37°C O/N

Date : 110524 Purification : QIAGEN Miniprep kit→dH<sub>2</sub>O 100 ul

●Digestion by restriction enzyme / Concentration calibration

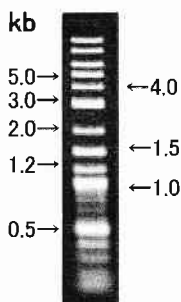
Date : 110524

DNA concentration (O.D.): 55.47 ng/ul

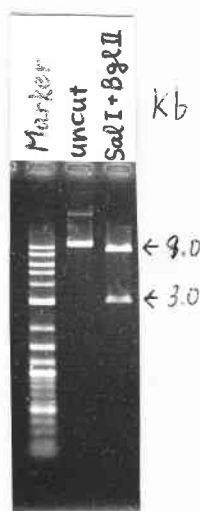
|                        |            |
|------------------------|------------|
| DNA                    | 1 ul       |
| Enzyme (Sal I +Bgl II) | 0.5+0.5 ul |
| Buffer H               | 1 ul       |
| dH <sub>2</sub> O      | 7 ul       |
| Total                  | 10 ul      |

Electrophoresis: 1% agarose gel, 1 × TAE Buffer

Marker: 2-Log DNA Ladder (NEB#N3200L)



←4.0  
←1.5  
←1.0



<Expected digestion pattern >

3061, 9117 bp.....

●Adjust plasmid DNA solution to 25 ng/ul ~preparation for shipping~

Date : 110526 Shipped : 25 ng/ul, 40 ul

Final concentration: 25 ng/ul

|                           |       |    |
|---------------------------|-------|----|
| DNA ( <u>55.47</u> ng/ul) | 76.0  | ul |
| 10 × TE                   | 16.9  | ul |
| dH <sub>2</sub> O         | 75.8  | ul |
| Total                     | 168.7 | ul |



Project : GNP

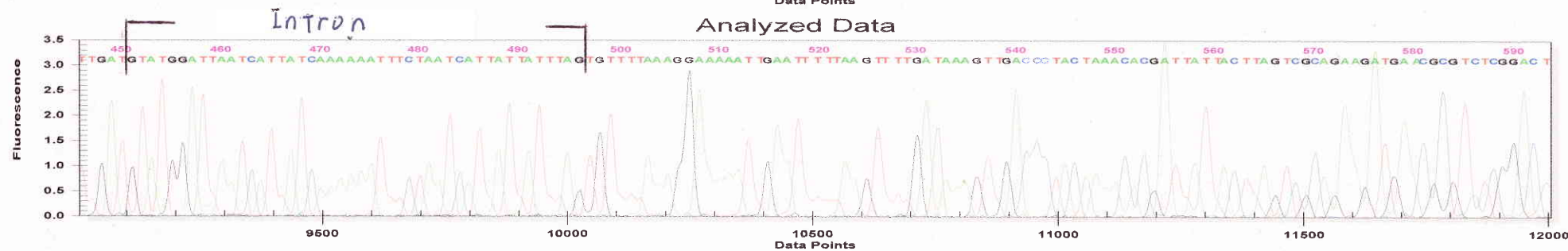
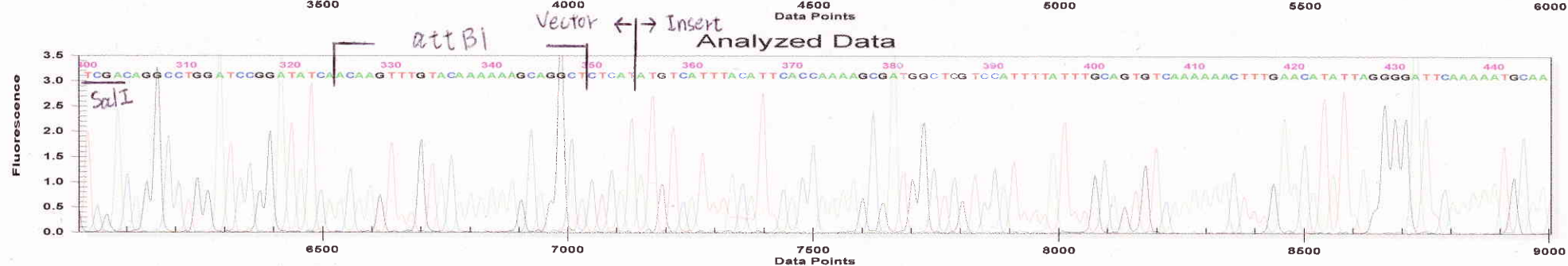
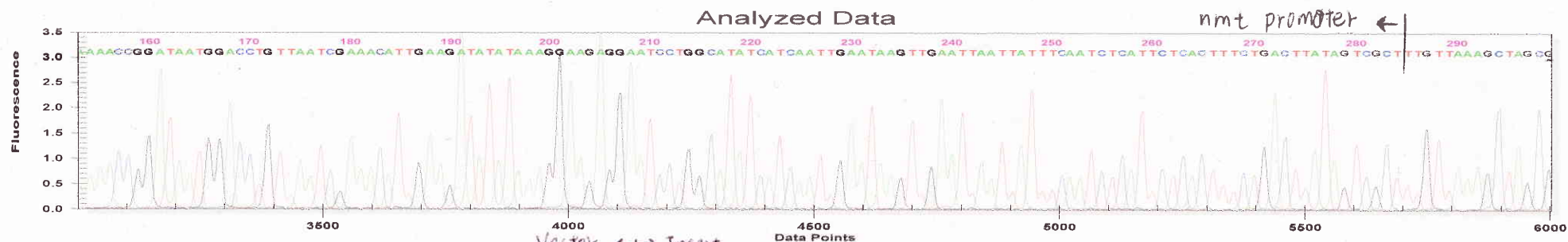
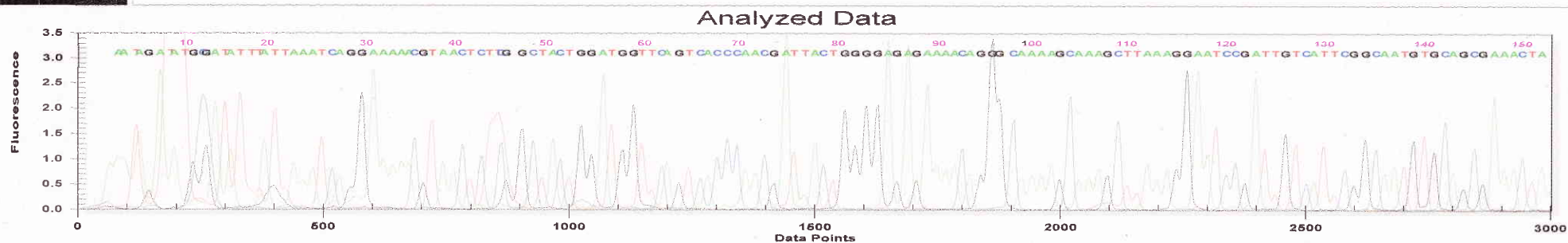
System : System 1

Operator : 1.110525.furu

Sample : 6107\_26G09\_nmt1Fw.B08\_11052511CP

Instrument : System 1 (Ver. 9.0.25)

Result : 6107\_26G09\_nmt1Fw.B08\_11052511CP





Project : GNP  
 Sample : 6107\_26G09\_ADHrev.C08\_11052511CP  
 Result : 6107\_26G09\_ADHrev.C08\_11052511CP

System : System 1

Operator : 1.110525.furu  
 Instrument : System 1 (Ver. 9.0.25)

