

**RIKEN Clone ID : SpFFH24A01**

Vector : pDual-FFH1c

Systematic Name	SPCC1235.15
ORF length	1487 bp

● Plasmid DNA purification

Date : 121015

Culture : LB (100 ug/ml Ampicillin) 5 ml -> 37°C O/N

Date : 121016

Purification : QIAGEN Miniprep kit -> dH<sub>2</sub>O 100 ul

● Digestion by restriction enzyme/Concentration calibration

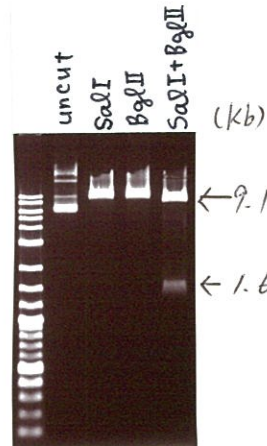
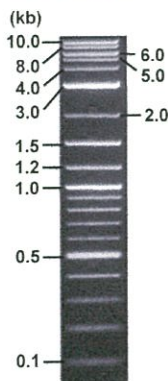
Date : 121101

DNA concentration (O.D.): 96 ng/ul

DNA	0.5	ul
Enzyme (SalI + BglII)	0.5 + 0.5	ul
Buffer H		1 ul
dH <sub>2</sub> O	7.5	ul
<b>Total</b>		<b>10 ul</b>

Erectrophoresis : 0.8% agarose gel, 1x TAE Buffer

Marker : 2-Log DNA Ladder (NEB#N3200L)



<Expected digestion pattern from SpFFH24A01 >

.....9117, 1646 bp

● Adjust plasmid DNA solution to 25 ng/ul ~preparation for shipping~

Date : 130312

Shipping amount : 40 ul

Concentration at the time of preparation of plasmid DNA : 25 ng/ul

DNA ( <u>96</u> ng/ul)	<u>74</u>	ul
10x TE	<u>28.4</u>	ul
dH <sub>2</sub> O	<u>181.8</u>	ul
<b>Total</b>	<u>284.2</u>	ul

APPROVED BY :



S/N G:93 A:85 T:89 C:67  
KB.bcp  
KB 1.4.1.8 Cap:24

Primer A : nmt1-F

5' GCTGTAACACACCACGAGAC 3'

24-F\_H03\_24  
24-F

KB\_3500\_POP7\_BDTv3.mob

Pts 1235 to 12919 Pk1 Loc:1212

Version 5.4 HiSQV Bases: 1018

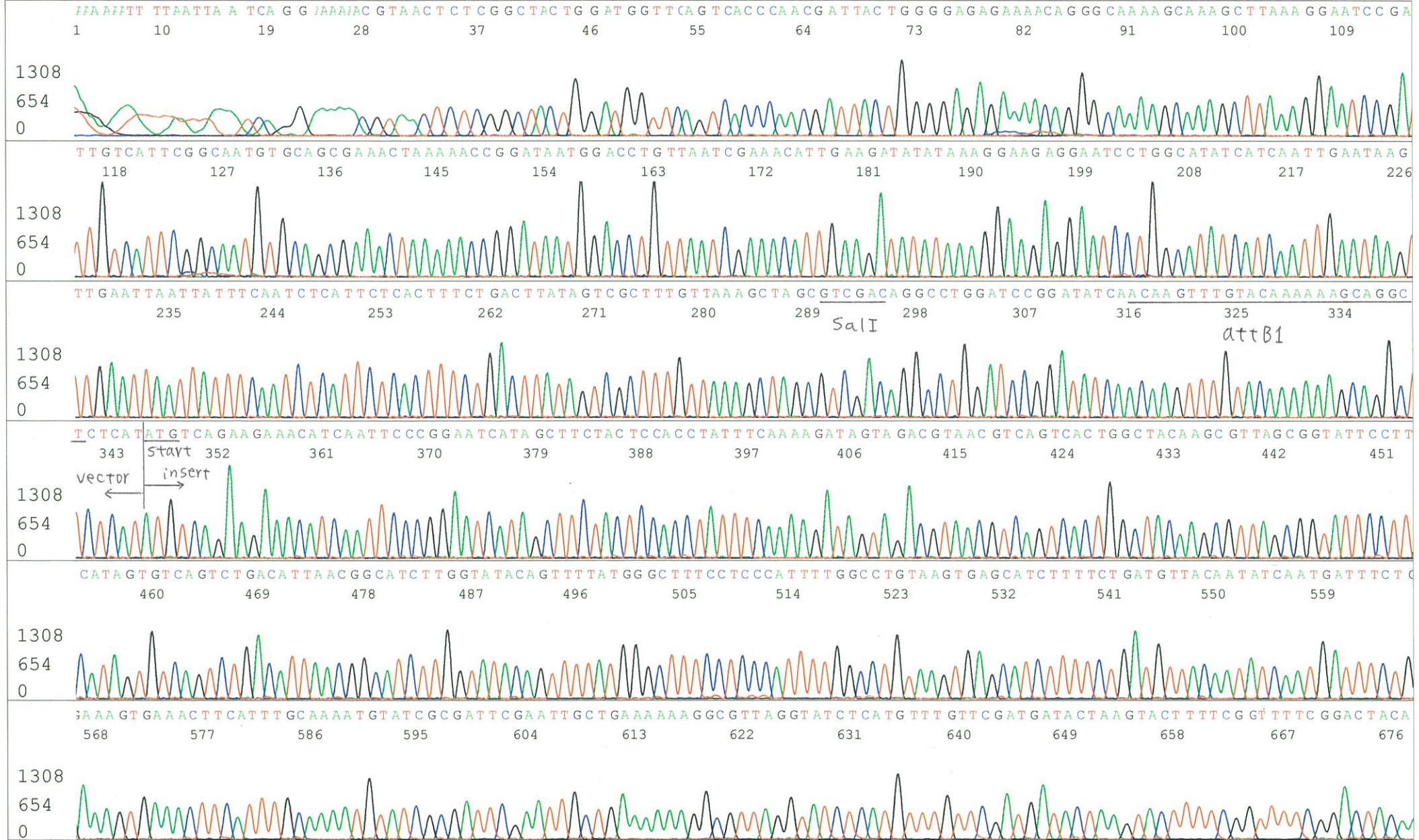
Inst Model/Name 3500/3500 Instrument

Oct 17,2002 02:00PM, JST

Oct 17,2002 02:26PM, JST

Spacing:11.53 Pts/Panel1350

Plate Name: 20121017-yosidakoubo

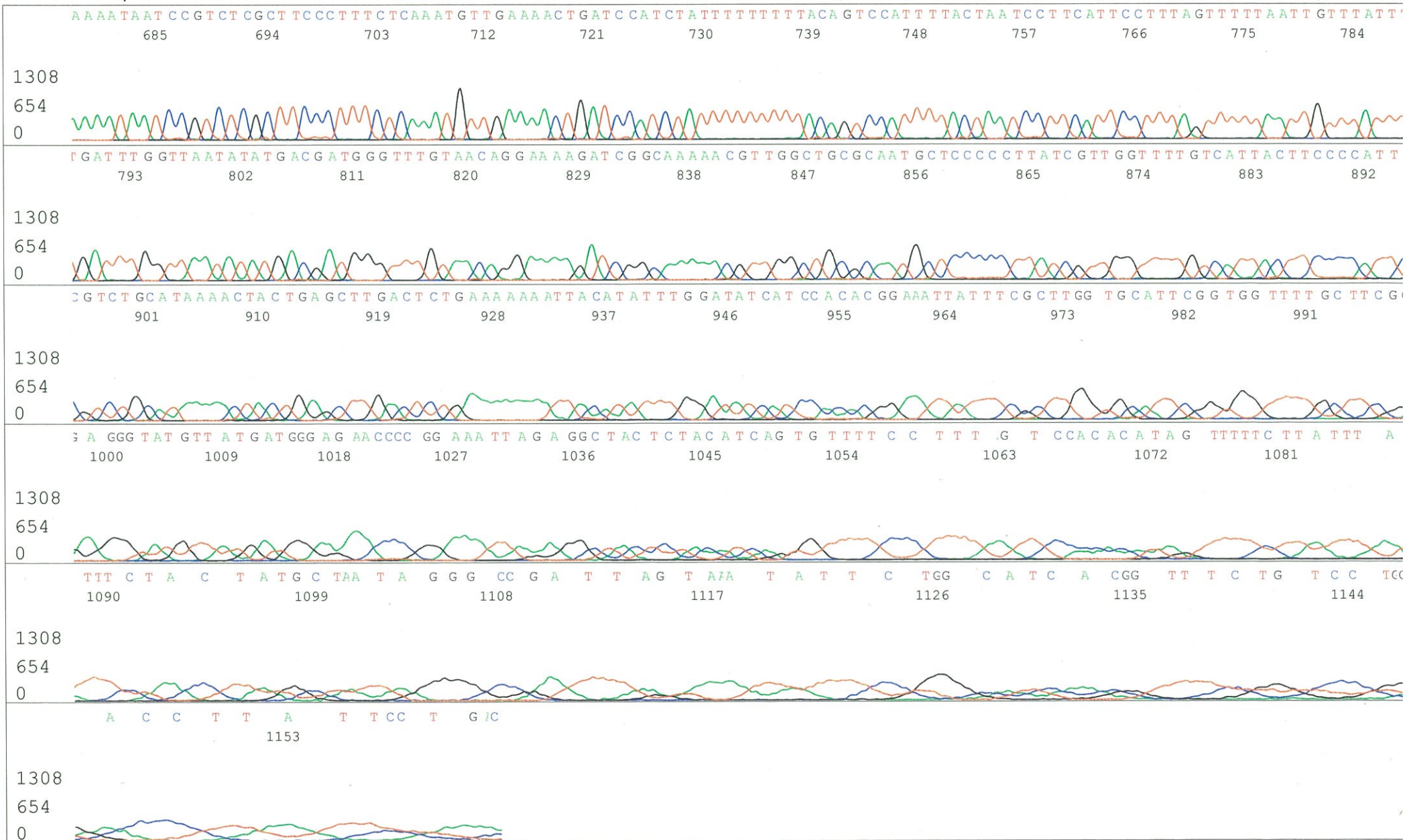




S/N G:93 A:85 T:89 C:67  
KB.bcp  
KB 1.4.1.8 Cap:24

24-F\_H03\_24  
24-F  
KB\_3500\_POP7\_BDTv3.mob  
Pts 1235 to 12919 Pk1 Loc:1212  
Version 5.4 HiSQV Bases: 1018

Inst Model/Name 3500/3500 Instrumen  
Oct 17,2002 02:00PM, JST  
Oct 17,2002 02:26PM, JST  
Spacing:11.53 Pts/Panel1350  
Plate Name: 20121017-yosidakoubc





S/N G:28 A:26 T:27 C:2 Primer B : ADH rev

KB.bcp

KB 1.4.1.8 Cap:24

5' CTATACCTGAGAAAGCAACCTGAC 3'

KB\_3500\_POP7\_BDTv3.mob

Pts 1253 to 12822 Pk1 Loc:1230

Version 5.4 HiSQV Bases: 983

