

RIKEN Clone ID : SpYFH02G12

Vector : pDual-YFH1c

Systematic Name	SPCC622.09
ORF length	381 bp

● Plasmid DNA purification

Date : 170110

Culture : LB (100 ug/ml Ampicillin) 5 ml -> 37°C O/N

Date : 170111

Purification : QIAGEN Miniprep kit -> dH₂O 100 ul

● Digestion by restriction enzyme/Concentration calibration

Date : 170111

DNA concentration (O.D.): 383 ng/ul

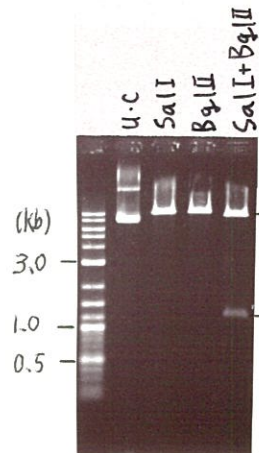
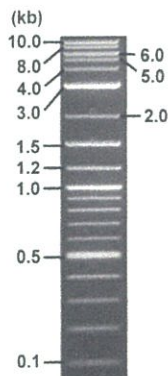
< Size of fragment expected from this clone >

DNA	0.25	ul
Enzyme (SalI + BglII)	0.5 + 0.5	ul
Buffer H		1 ul
dH ₂ O	7.75	ul
Total		10 ul

SalI		10.3 kb
BglII		10.3 kb
SalI + BglII	9.1,	1.2 kb

Electrophoresis : 1% agarose gel, 1x TAE Buffer

Marker : 2-Log DNA Ladder (NEB#N3200L)



● Adjust plasmid DNA solution to 25 ng/ul

Date : 170117

DNA (<u>383</u> ng/ul)	83.0	ul
10x TE	127.2	ul
dH ₂ O	1061.4	ul
Total		1271.6 ul

● Shipping



Conc. : 25 ng/ul, Volume : 40 ul



~~Conc. : ng/ul, Volume : ul~~

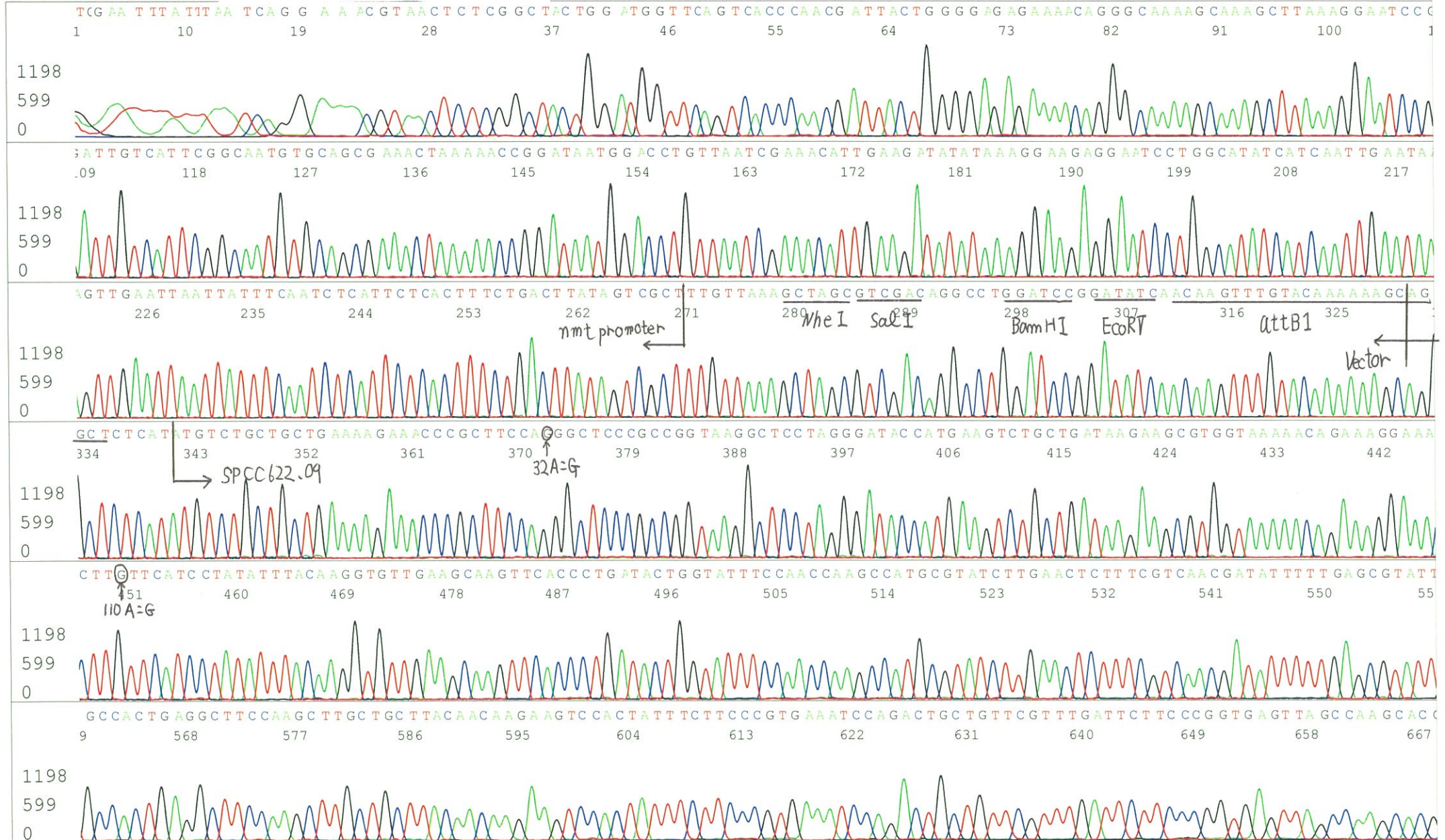
APPROVED BY :



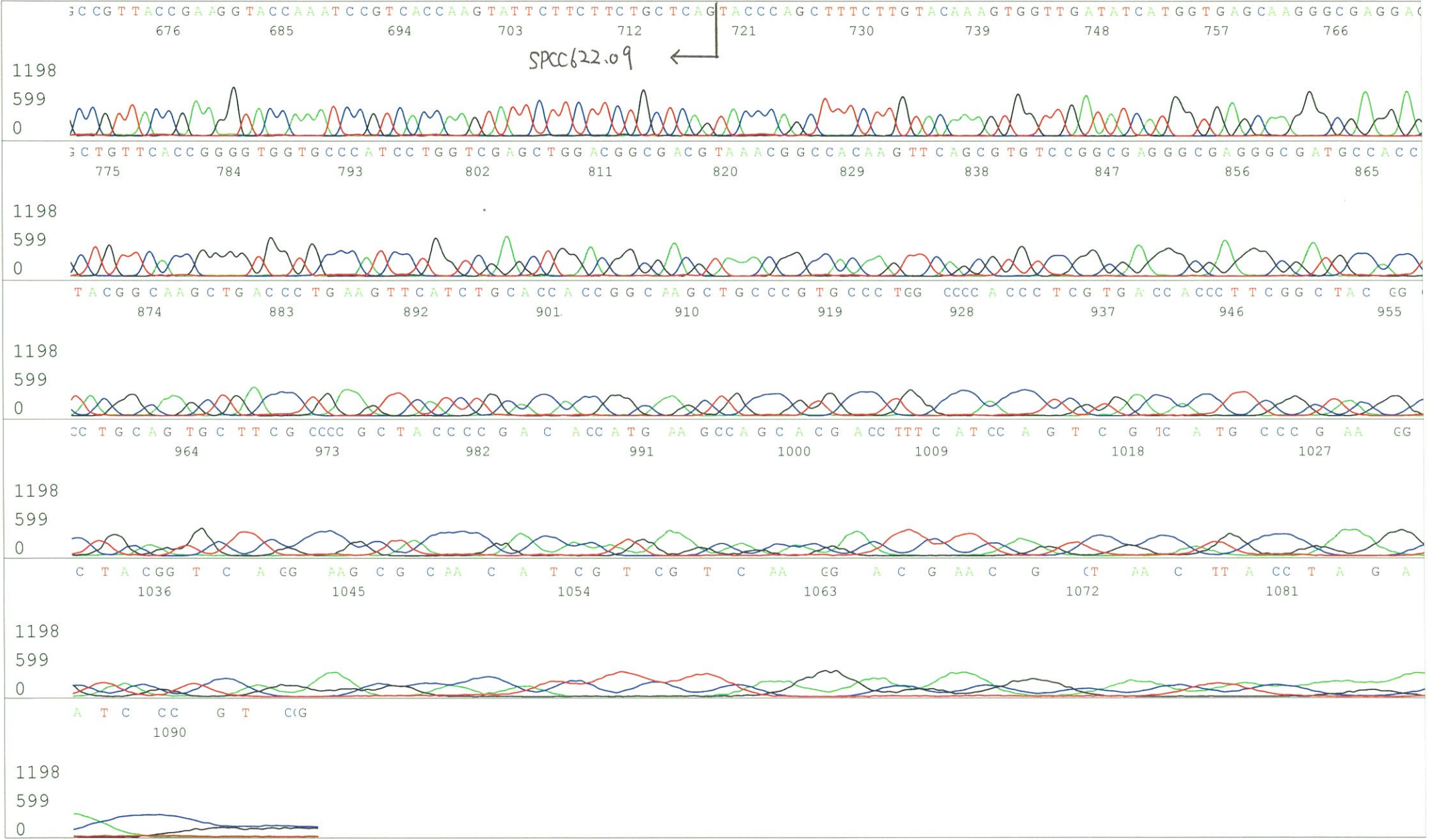
S/N G:158 A:198 T:187 C:236
KB.bcp
KB 1.4.1.8 Cap:20

Primer A : nmt1-F

5' GCTGTAAAACACCACGAGAC 3'



S/N G:158 A:198 T:187 C:236
KB.bcp
KB 1.4.1.8 Cap:20



S/N G:153 A:233 T:240 C:25'

6107_SpYFH02G12_A7Aa_YFP_R

Jan 12,2017 02:25PM, JST

KB.bcp

Primer B : YFP-R

KB_3500_POP7_BDTv3.mob

Jan 12,2017 02:51PM, JST

KB 1.4.1.8 Cap:23

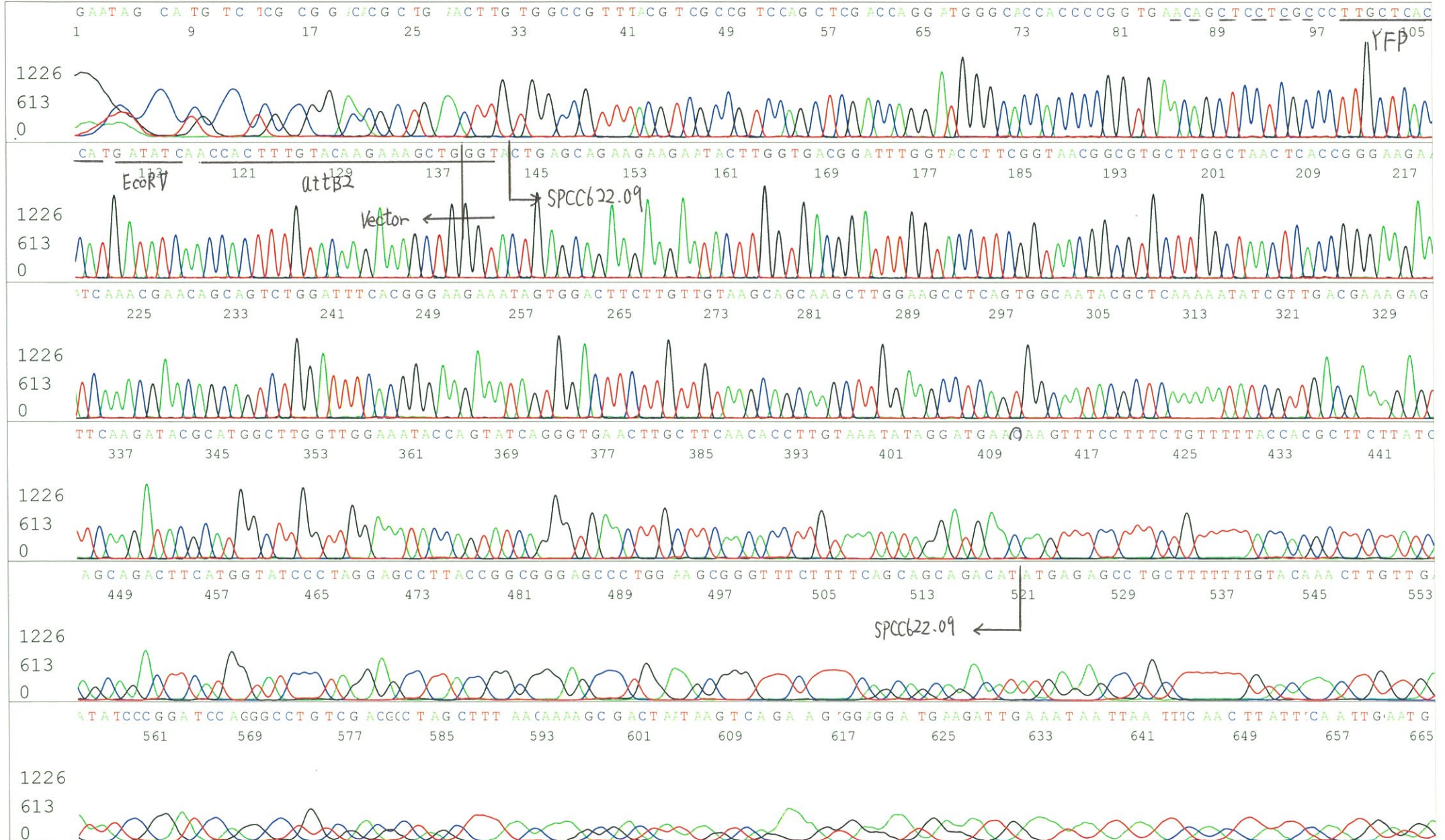
5' GAACTTCAGGGTCAGCTTGC 3'

Pts 1712 to 13100 Pk1 Loc:1689

Spacing:12.11 Pts/Panel1350

Version 6.0 HiSQV Bases: 581

Plate Name: 20170112_GNP



S/N G:153 A:233 T:240 C:257
KB.bcp
KB 1.4.1.8 Cap:23

