

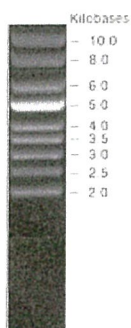


**RIKEN DNA BANK**

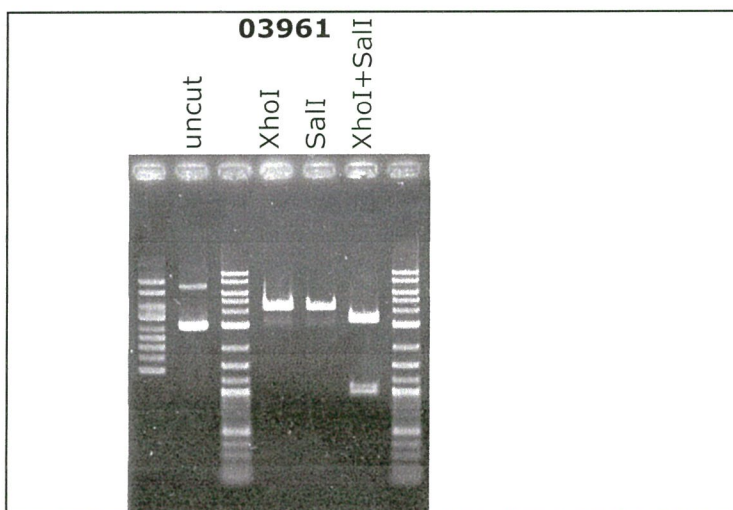
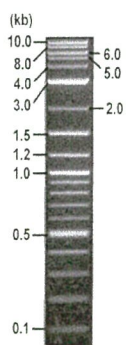
clone name : pCMVhVEGF

- Clone ID : RDB\_03961
- Lot : 20219\_B3Ks
- DNA Concentration : 25 ng/μL
- Volume : 40 μL
- Form : DNA solution in TE buffer
- Host : DH5α
- Culture : LB medium
- Antibiotics : 100 μg/mL Ampicillin
- Purification : QIAGEN QIAprep Spin Miniprep kit
- Digestion by restriction enzyme

Supercoiled DNA Ladder  
(NEB#N0472S),  
250 ng/well



1 kb Plus DNA Ladder  
(NEB#N3200L),  
250 ng/well



Electrophoresis : 100 ng DNA per lane ; 1% agarose gel , 1 x TAE Buffer

Restriction enzyme	Expected size of fragment
<b>XhoI</b>	<b>4.3</b> kbp
<b>SalI</b>	<b>4.3</b> kbp
<b>XhoI+SalI</b>	<b>3.3, 1.0</b> kbp
	kbp

● Confirmation of the insertion sequence

Please be sure to check our sequence analysis results before your request.

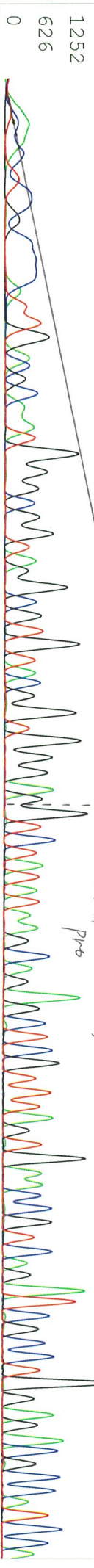
Sequence name	Primer ID	Primer name	Confirmed feature
Sequence - A	Pr0016	CMV_Forward	CMV pro,SV40 intron,VEGF 5'
Sequence - B	Pr1192	SV40polyA_F	SV40 pA,VEGF 3'
Sequence - C	-	-	-
Sequence - D	-	-	-
Sequence - E	-	-	-
Sequence - F	-	-	-
Sequence - G	-	-	-
Sequence - H	-	-	-

APPROVED BY :

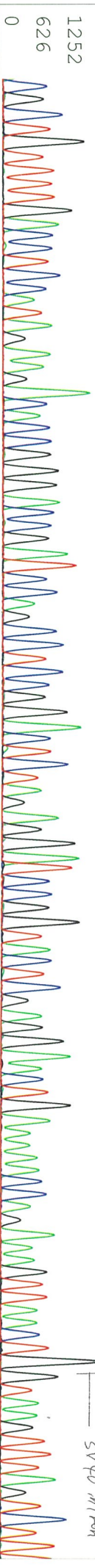


S/N G:207 A:245 T:283 C:265 primer name A : CMV\_Forward  
KB.bop KB\_3500\_POP7\_BDTv3.mob Dec 04, 2023 09:50AM, JST  
KB 1.4.1.8 Cap.1 5' GCACCAAAATCAACGGGACTT 3' Pts 1603 to 13067 Pk1 Loc:1580  
Version 6.0 HISQV Bases: 862 Spacing:1.63 Pts/Panel1350  
Plate Name: 20231204\_dnabank

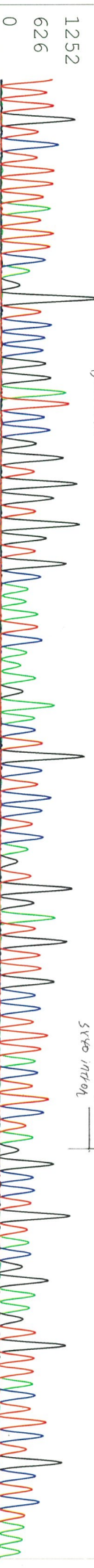
1 NN NN NNNN NNNNNN NNGCN NNGGCGGT AN GCGTG TACGGT GGG NN GTCTATATA G CAGAGCTTCGTT TAGTGAACCGTCAGATCGCCCTGGAGCGCCATCC



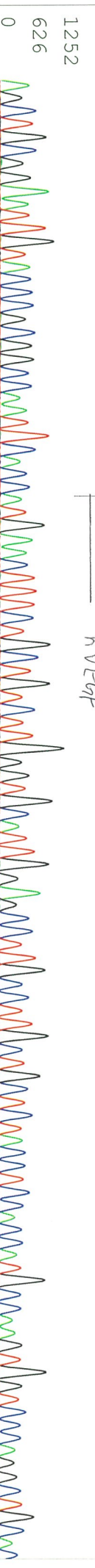
109 CTGTTT GACCTCCATG AAGACACC GGAACCGATCCAGCCTCCGGACTCTAGAGGFTCCGGTACTCGAGGAACTGAAAAACCAAGAA GTTAACTGTAAAGTTTAA GTCTT



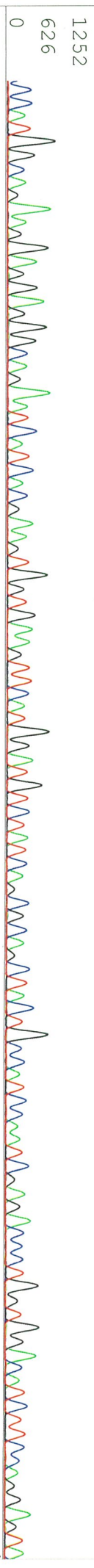
226 TTTGCTTTTATTTCAGGTC CCGGATCCGGTCCGGTGTGGTGCAATCAAGAATCGCTCCTCA GTGGATGTTGCCCTTACTTCTAGGCCCTGTACCGGAAGTGTGTTA CTCTCTGCTTAAA



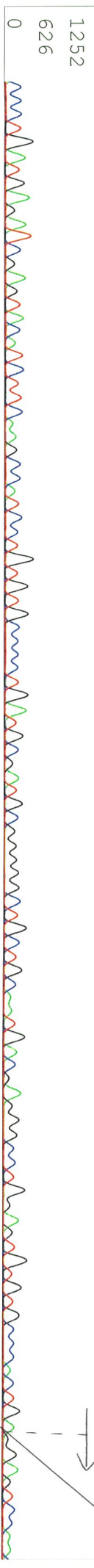
334 AGCTGGCGAATGTACCC GCGGCGCAATTCACCGAATGA ACTTTCTGCTGTCTTTGGTGCA TTGGAGCCCTTGCCCTGCTCTA CCTCCACCA TGCCAA GTGGTCCCA GGCTGCAC



451 :CGATTGGCAGAA GGAGGAGGCGA GAATCATCAGAA GTGTGAA GTTCATGGATGTTCTATCAGCGCA GCTACTGCCATCCAA TCGA GACCCTGGTGGACATCTTCCAGAGT



559 CCTGATGAGATCGAGTACATCTCAA GCCATCCTGTGTGCCCTGATGCCGATGCCGGGGGCTGCTGCAATGACGAGGGCCTGGAGTGTGTGCCACTG AN GANTCCAA



S/N G:239 A:216 T:337 C:340

KB.bcp

KB\_3500\_POP7\_BDTV3.mob

Dec 04, 2023 05:22PM, JST

KB 1.4.1.8 Cap:3

primer name B : SV40polyA\_F

Pis 1947 to 8704 Pk1 Loc: 1915

Dec 04, 2023 05:41PM, JST

5' GCAATAGCATCACAAATTTACAC 3' Version 6.0 HISQV Bases: 655 Plate Name: 20231204\_dhbank2

