

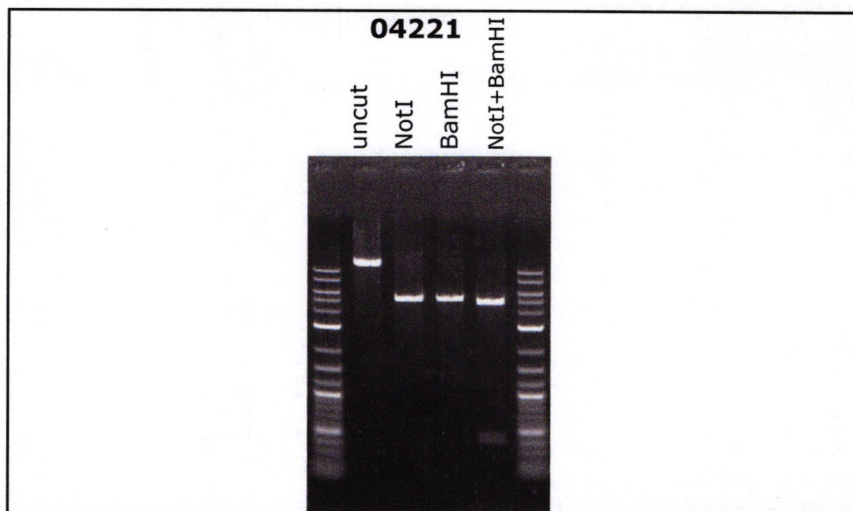
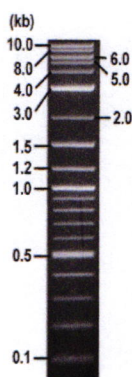


RIKEN DNA BANK

clone name : pGEX-G7-5a

- Clone ID : RDB_04221
- Lot : 19814_B2Kp
- DNA Concentration : 25 nanogram/microliter
- Volume : 40 microliter
- Form : DNA solution in TE buffer
- Host : DH5 alpha
- Culture : LB medium
- Antibiotics : 100 microgram/ml Ampicillin
- Purification : QIAGEN QIAprep Spin Miniprep kit
- Digestion by restriction enzyme

1 kb Plus DNA Ladder
(NEB#N3200L),
250 ng/well



Electrophoresis : 100 nanogram DNA per lane ; 1% agarose gel , 1 x TAE Buffer

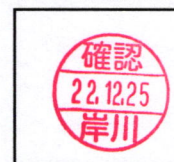
Restriction enzyme	Expected size of fragment
NotI	5.4 kbp
BamHI	5.4 kbp
NotI+BamHI	4.9, 0.4 kbp
	kbp

● Confirmation of the insertion sequence

Please be sure to check our sequence analysis results before your request.

Sequence name	Primer ID	Primer name	Confirmed feature
Sequence - A	Pr0153	GST-M_F	GST,thrombin site,insert 5'
Sequence - B	Pr0732	tetpro-B_R	insert 3'
Sequence - C	Pr0310	pUC-M13_-100	lacZa,,lacO,lac pro,lacI
Sequence - D	-	-	-
Sequence - E	-	-	-
Sequence - F	-	-	-
Sequence - G	-	-	-
Sequence - H	-	-	-

APPROVED BY



S/N G:2953 A:2635 T:2373 C:2645

KB.bcp Cap:7 primer name A : GST-M_F

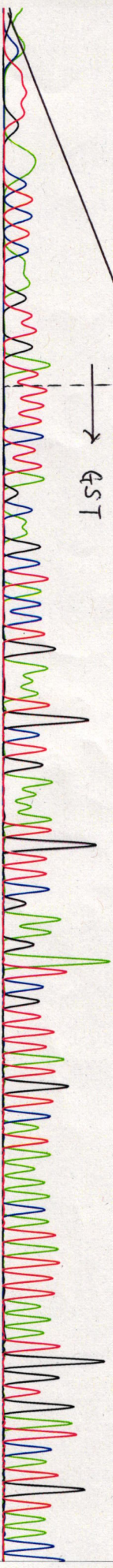
5' ATATTAGATACGGTGTTCG3'

KB_3500_POP7_BDTV3.mob

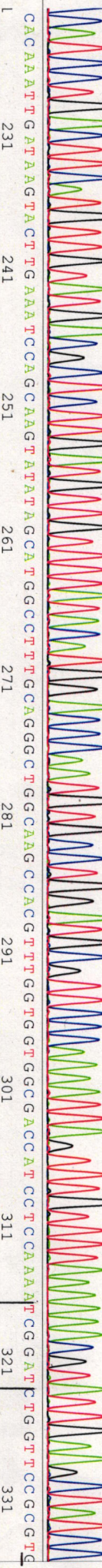
Pts 1863 to 8706 Pk1 Loc: 1831

Version 6.0 HiSeq Bases: 681

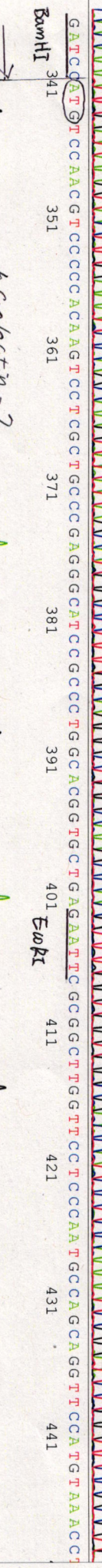
1 NN NN NN NN NNNN T C T NNN A G T T G A N T T T C T T A G C A A G C T T A C C T G A A A T G C T G A A A A T G T T C G A A G A T C G T T T A T G T C A T A A A C A T A T T T A A A T G G T G A T C A T G T A A C



111 CCATCCTGACTTCATGTTGTATGACGCTCTTGATGTTGTTTATACATGGACCCAATGTGCCGGATGCGTCCCAAAATTA GTTTGTTTAAATAAACGTTATG AAGCTATCC



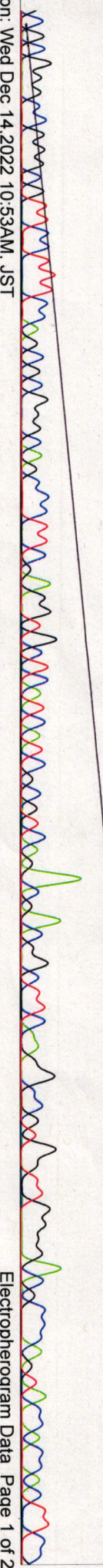
1 CACAAATTGATAAGTACTTGAATAATCCAGCAAGTATATAGCATGGCCCTTGCAAGGCTGGCAAGCCACCCTTTGGTGGTGGCGGACCAT CCTCCAAATCGGATCTGTTCCCGCTG



1 GATC GATGTTCCAAACGTCCTCCCAAGTCCCTCGCTGCCCGAAGGCATCCGCCCCTGGCAAGGCTGTGAGAAATTCGCCGCTTGGTCCCTCCCAATGCCAAGCAAGTTCCATGTAACCT



1 GCTGTGGGGAGGAGCAGGGCTCCGATGCCGCCCTGCATTTCAACCCTCCCGGCTGGACACGTCGG AN GTGGTCTTCAACA GCAAGGAGCAAGGCTCTGGGGCCCGAGGAG



1 CGCGGGCCGGGGCTTCCTTCCAGCGCGGGCAAGCCCTTCGAGGTCAATCATCCGCTCAAGANACN GCTTCNAN GCCGTN GTG N GGAN GCCAGTACCACCACTNCC

Printed on: Wed Dec 14, 2022 10:53AM, JST

Electropherogram Data Page 1 of 2

S/N G:31 A:22 T:17 C:27

primer name **B** : tetpro-B_R

KB_bcp KB_3500_POP7_BDTv3.mob

Dec 15, 2022 03:02PM, JST

KB 1.4.1.8 Cap:7

5'-TATCAGGAGGCCCTTCTGCT-3'

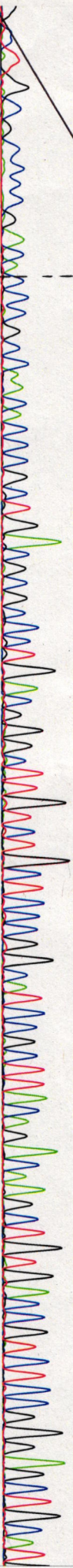
Pts 1895 to 8704 Pk1 Loc:1863

Dec 15, 2022 03:20PM, JST

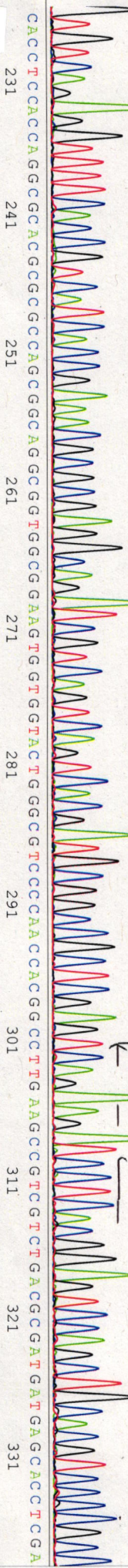
Version 6.0 HiSeqV Bases: 654

Plate Name: 20221215_dhbank2

1 11 21 31 41 51 61 71 81 91 101 111
NNNNNN N N NNN N C IN A C N C C C C G C C A C A C A C C C G C T G A C C G C C C C T G A C C G G C C C C T G A C C G G C C T T G T C T G C C T C C C G C C A T C C C G C T T A C A G A C A A G C T G T G A C C G T C C T C C G G A G C T G C A T

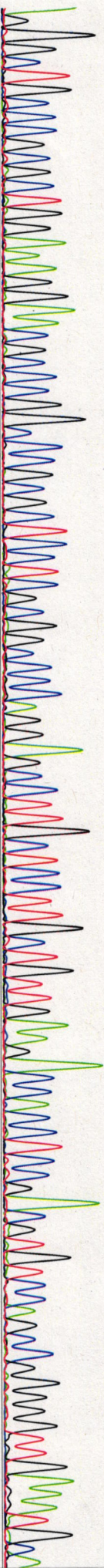


GTGTCAGAGGTTTTCACCGTCACTCACCGAAACGGCCGAGGCGAGATCGTCAGTCAATGCGAGTCCGGCCGCTCGAGTCAAGAGATCCCTCACCGAGTCCAGCTGCCCGCC
121 131 141 151 161 171 181 191 201 211 221
MotI XhoI
flowo saprise galectin 7 (LGALS7)



B. galectin-7 (ORF)

CACCTCCACCAAGCCGACCGCCGCGCCAGCGCCAGGCGGAGTGGGTAAGTGGTGGTACTGGGGCTCCCAACCACCGCCCTTGAAGCCGCTCTGAACCGATGATGACACCTCCGA
231 241 251 261 271 281 291 301 311 321 331
AGGGCTGCCCGCCGCGCTGGAAGAAAGAAAGCGCCGCGCCGCGCTCCCGGGCCCAAGAGCCTTGGCTTCTTGAAGAACCAACCCTCCGACGTGTCCAAGCCGGGGTTGAAATGCA
341 351 361 371 381 391 401 411 421 431 441 451



B. galectin-7

GGGGGCATCGGAGCCCTGTGCTCTCCCGGCAAGCAAGTTTACATGGAACCTGTGGCATTTGGGAGGAACCAAGCCGGAAATTTCAAGCACCGTGCAGGGCGGATGCC
461 471 481 491 501 511 521 531 541 551 561
TCCGGCAGCGNGGNTTGTGGGGANGTTGANATGNNTCCNCGGNNNCAGATNCGANTTTGGANNANGNNCGCCACCACCNAAACNNNGTNGNCNCCNNGCA
571 581 591 601 611 621 631 641 651 661
B. galectin-7 (ORF)



B. galectin-7
(LGALS7)

S/N G:3052 A:3279 T:2711 C:3792

KB.bcp primer name C : pUC-M13_-100

KB_3500_POP7_BDTV3.mob

Dec 14, 2022 09:37AM, JST

KB 1.4.1.8 Cap:13

5-ATTACGCCAGCTGGCGAAGG-3'

Pts 1904 to 8706 Pk1 Loc:1872

Version 6.0 HiSQV Bases: 642

Plate Name: 20221214_dnabank

