

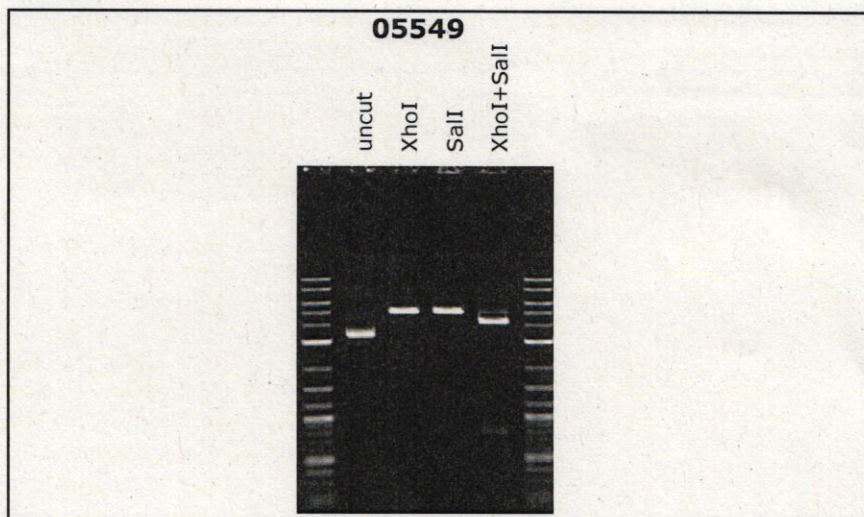
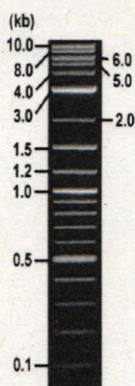


RIKEN DNA BANK

clone name : **pKM2L-pvTK**

- Clone ID : RDB_05549
- Lot : 19664_B2Gd
- DNA Concentration : 25 nanogram/microliter
- Volume : 40 microliter
- Form : DNA solution in TE buffer
- Host : DH5 alpha
- Culture : LB medium
- Antibiotics : 25 microgram/ml Kanamycin
- Purification : QIAGEN QIAprep Spin Miniprep kit
- Digestion by restriction enzyme

1 kb Plus DNA Ladder
(NEB#N3200L),
250 ng/well



Electrophoresis : 100 nanogram DNA per lane ; 1% agarose gel , 1 x TAE Buffer

Restriction enzyme	Expected size of fragment
XhoI	5.0 kbp
SalI	5.0 kbp
XhoI+SalI	4.2, 0.8 kbp
	kbp

● Confirmation of the insertion sequence

Please be sure to check our sequence analysis results before your request.

Sequence name	Primer ID	Primer name	Confirmed feature
Sequence - A	Pr0544	pBAC_lac_F	HSV TK pro 5'
Sequence - B	Pr0083	phRLR2primer	chimeric intron,HSV TK pro 3'
Sequence - C	Pr0444	chimeric intron 3-prime	T7 pro,hRluc 5'
Sequence - D	Pr0882	SV40pA_R	SV40 pA,hRluc 3'
Sequence - E	-	-	-
Sequence - F	-	-	-
Sequence - G	-	-	-
Sequence - H	-	-	-

APPROVED BY :



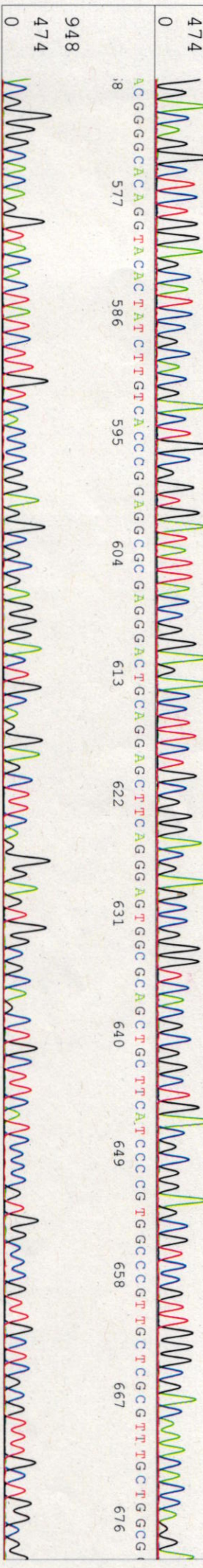
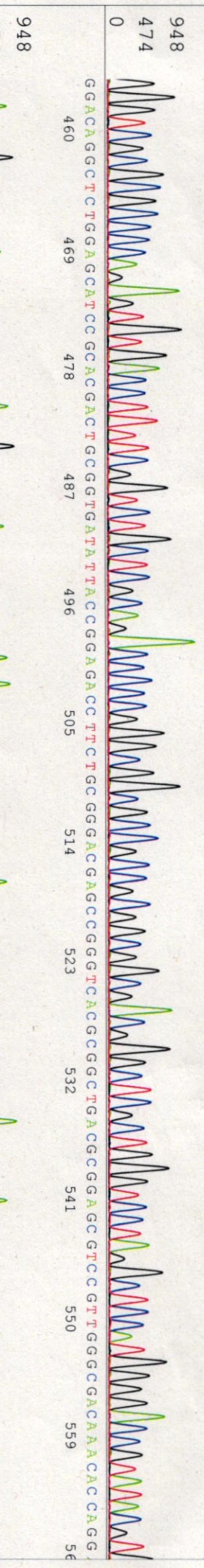
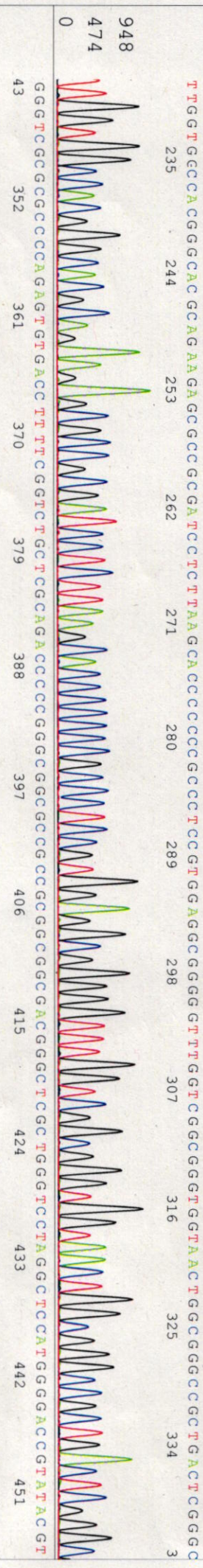
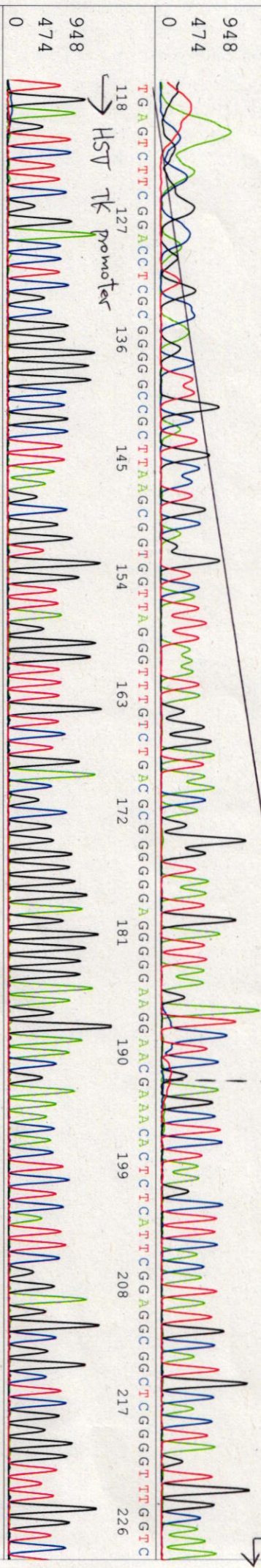
S/N G:145 A:64 T:59 C:109
KB.bcp
KB 1.4.1.8 Cap.3

primer name *A* : pBAC_lac_F
5- CGCCAGGGTTTCCAGTCACGAC -3'

KB_3500_POP7_BDTV3.mob
Pis 1309 to 13674 Pk1 Loc:1286
Version 6.0 HiSQV Bases: 974

Spacing: 12.13 Pfs/Panel1350
Plate Name: 20220719 Kitaku

1 10 19 28 37 46 55 64 73 82 91 100 109



3TGTCCCGGAAAGAAATATTATTGCGATGCTTTTAAGTTCTTAATGACACAAACCCTCCCAAGCGCTCTGTCATTTGGCGAATTCGAAACAAGATTCGAGTCGGGGCGGGC

CGGTCCTCCAGGTCACACTTCGCATTAAGGTGACGGCTGGCCCTCGAACACCGANCGAACCCTGCAACCCTGCAAGCGGNNCCGCTTAAACCCTGTCGACGCGTANAAATTCANCCGGT

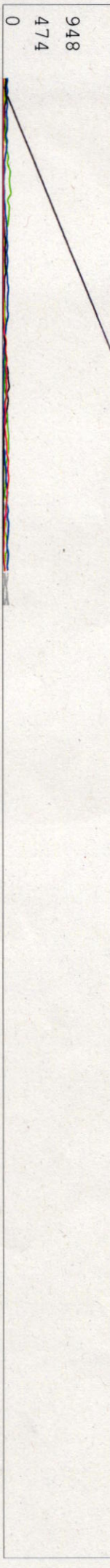
HST TK promoter

ACTGCANAGTTGGTCCGTGAGGNACTGGGCANGNAAATATCAAGGTTACAAAGANAGTTTNNNNNNANNCNATAGANNTTGGGCTGNCANNAAGANANNT

TNGCGTTTCNGANNNGNACCNAATNNNNNANNNNNNTCCNNTTNNNNTTNNNNTTNN

NN

NN



S/N G:344 A:157 T:145 C:294

primer name B :pHLR2

05549_19664_B2Gd_pHLR2primer

Jul 19, 2022 02:17PM, JST

KB.bcp

5'CCAATAGGTGCCTATCAGAAACGC 3'

KB_3500_POP7_BD1V3.mob

Jul 19, 2022 02:45PM, JST

KB 1.4.1.8 Cap:6

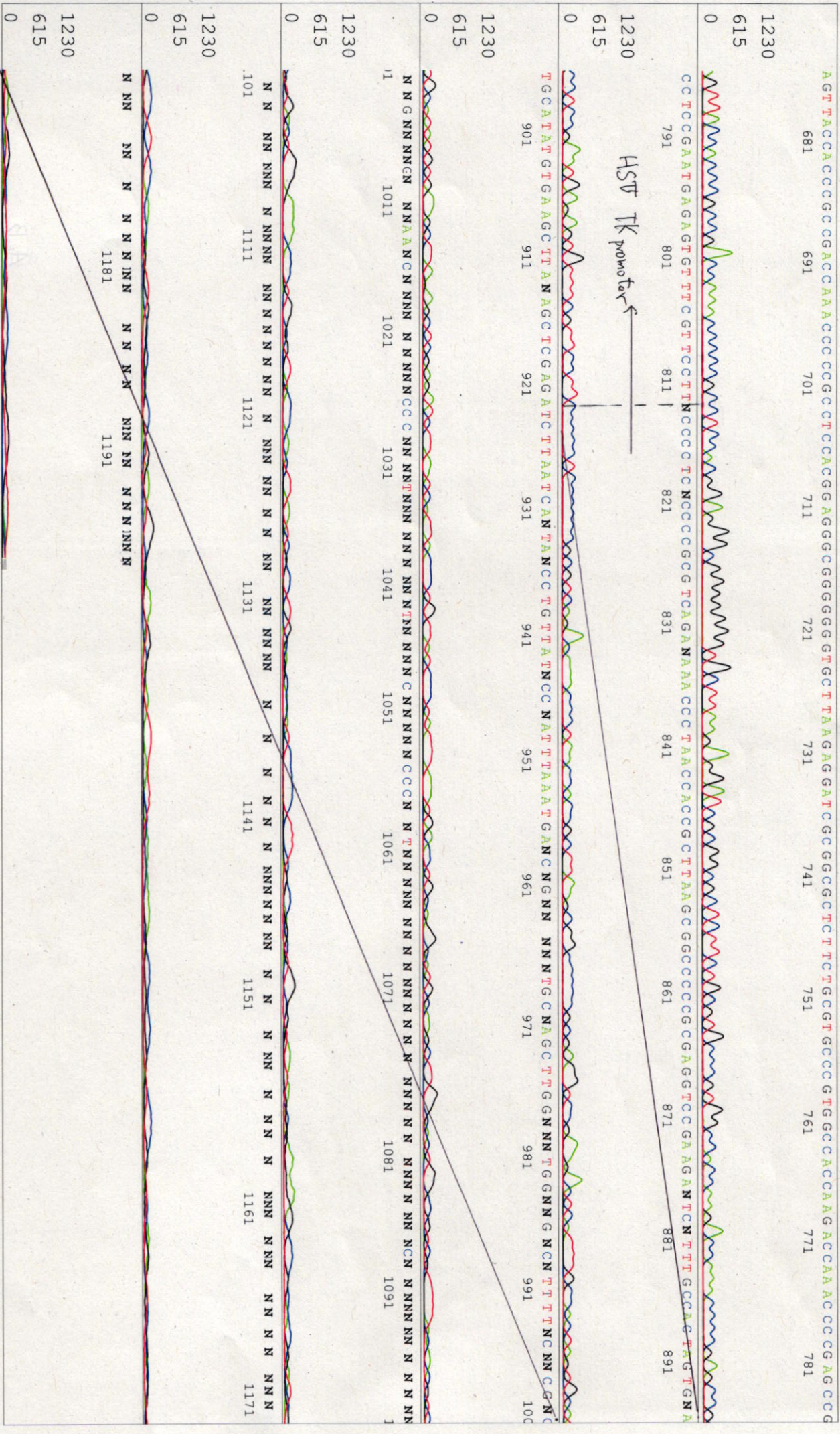
Pis 1283 to 13743 Pk1 Loc:1260

Spacing:12.26 Pst/Panel1350

Version 6.0 HISQV Bases: 975

Plate Name: 20220719 Kitaku





S/N G:47 A:34 T:33 C:44

primer name C : chimeric intron 3-prime

KB_bcp KB_3500_POP7_BDTV3.mob

Jul 26, 2022 02:53PM, JST

KB 1.4.1.8 Cap:4

5'TACTGACATCACCATTGGCCT3'

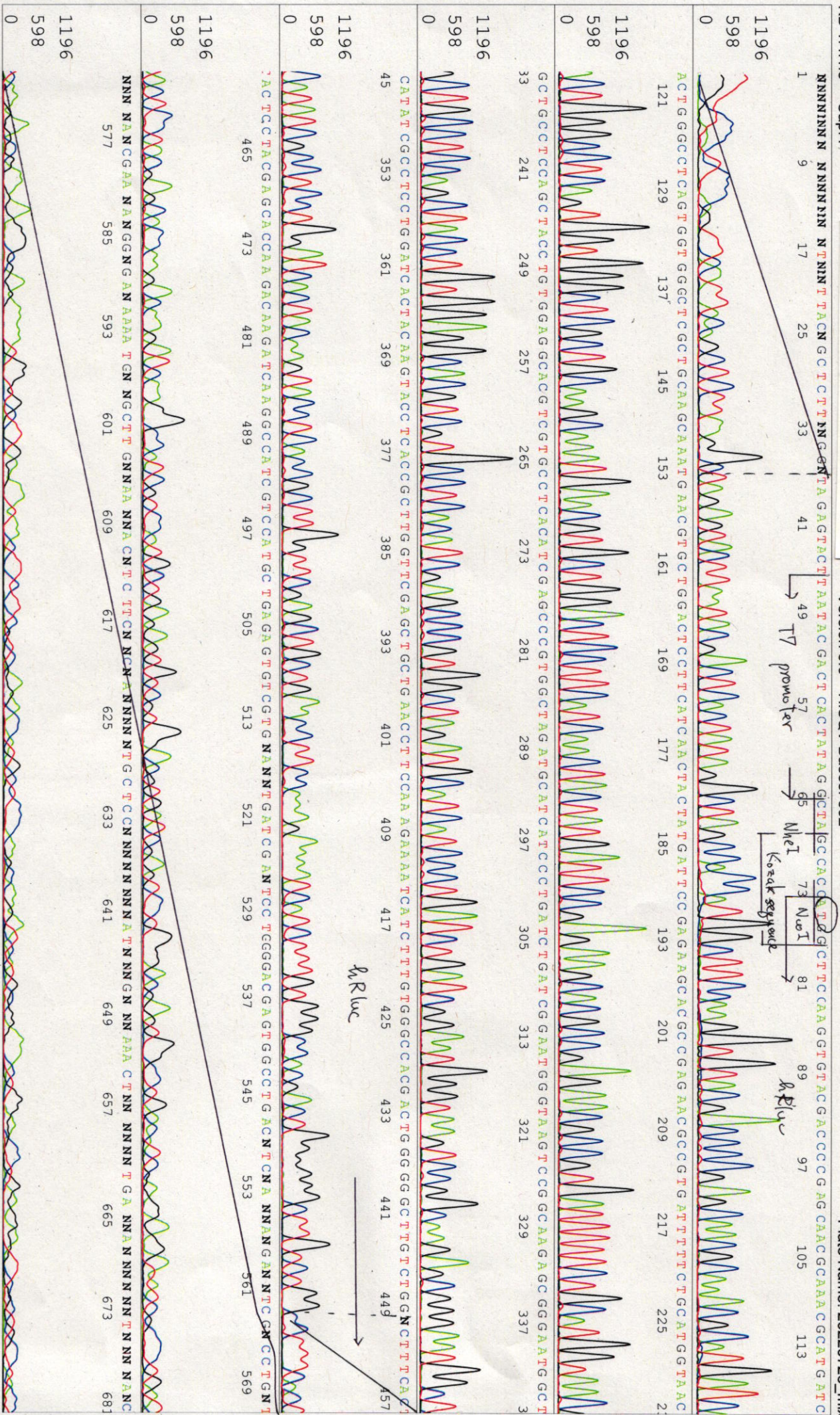
Pts 1526 to 14568 Pk1 Loc:1503

Spacing: 13.58 Pts/Panel 350

Version 6.0

HisQV Bases: 602

Plate Name: 20220726_mix



S/N G:105 A:83 T:79 C:99

KB.bcp

KB_3500_POP7_BDTv3.mob

Jul 26, 2022 02:24PM, JST

KB 1.4.1.8 Cap:5

primer name Φ : SV40pa_R

Pts 1379 to 13666 Pk1 Loc:1356

Jul 26, 2022 02:53PM, JST

5' CTTGTTATTGCAGCTATAATGG 3' Version 6.0 HISQV Bases: 948

Pls 1379 to 13666 Pk1 Loc:1356

Plate Name: 20220726_mix



