

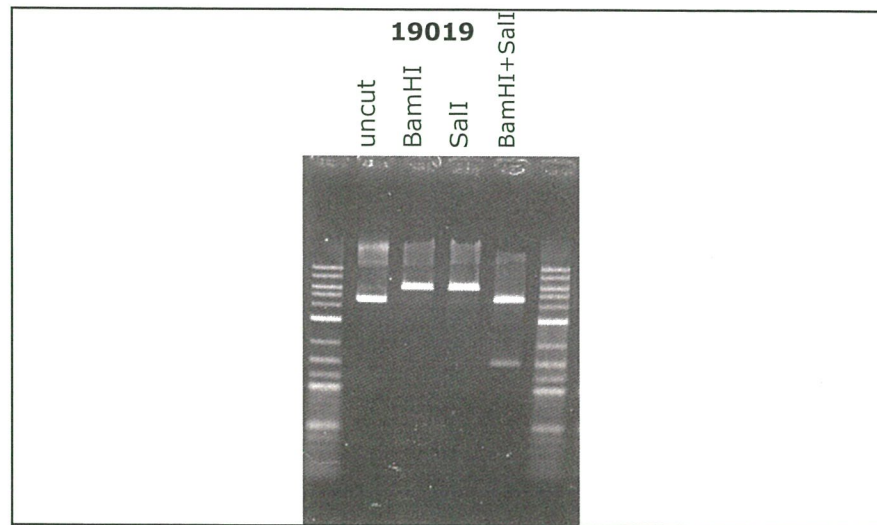
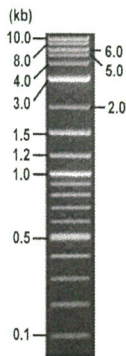


**RIKEN DNA BANK**

clone name : pMXs-3xFLAG-KLF4(S500A)

- Clone ID : RDB \_ 19019
- Lot : 19019 \_ B1Ec
- DNA Concentration : 25 nanogram/microliter
- Volume : 40 microliter
- Form : DNA solution in TE buffer
- Host : NEB stable
- Culture : LB medium
- Antibiotics : 100 microgram/ml Ampicillin
- Purification : QIAGEN QIAprep Spin Miniprep kit
- Digestion by restriction enzyme

1 kb Plus DNA Ladder  
(NEB#N3200L),  
250 ng/well



Electrophoresis : 100 nanogram DNA per lane ; 1% agarose gel , 1 x TAE Buffer

Restriction enzyme	Expected size of fragment
<b>BamHI</b>	<b>6.1</b> kbp
<b>SalI</b>	<b>6.1</b> kbp
<b>BamHI+SalI</b>	<b>4.6, 1.5</b> kbp
	kbp

● Confirmation of the insertion sequence

Please be sure to check our sequence analysis results before your request.

Sequence name	Primer ID	Primer name	Confirmed feature
Sequence - A	Pr0352	MMLV-pol_F	pol region,insert 5'(3xFLAG,hKLF4(S500A) 5')
Sequence - B	Pr1009	hKLF4-mut check_R2	insert 3'(hKLF4(S500A) 3',3' LTR
Sequence - C	Pr0365	pMXs-3LTRup_R2	insert 3'(hKLF4(S500A) 3'
Sequence - D	Pr0745	gag-N_R	MMLV psi,5' LTR
Sequence - E	Pr0724	lacIpro-B_F	3' LTR
Sequence - F	-	-	-
Sequence - G	-	-	-
Sequence - H	-	-	-

APPROVED BY :



S/N:G:141 A:83 T:59 C:103

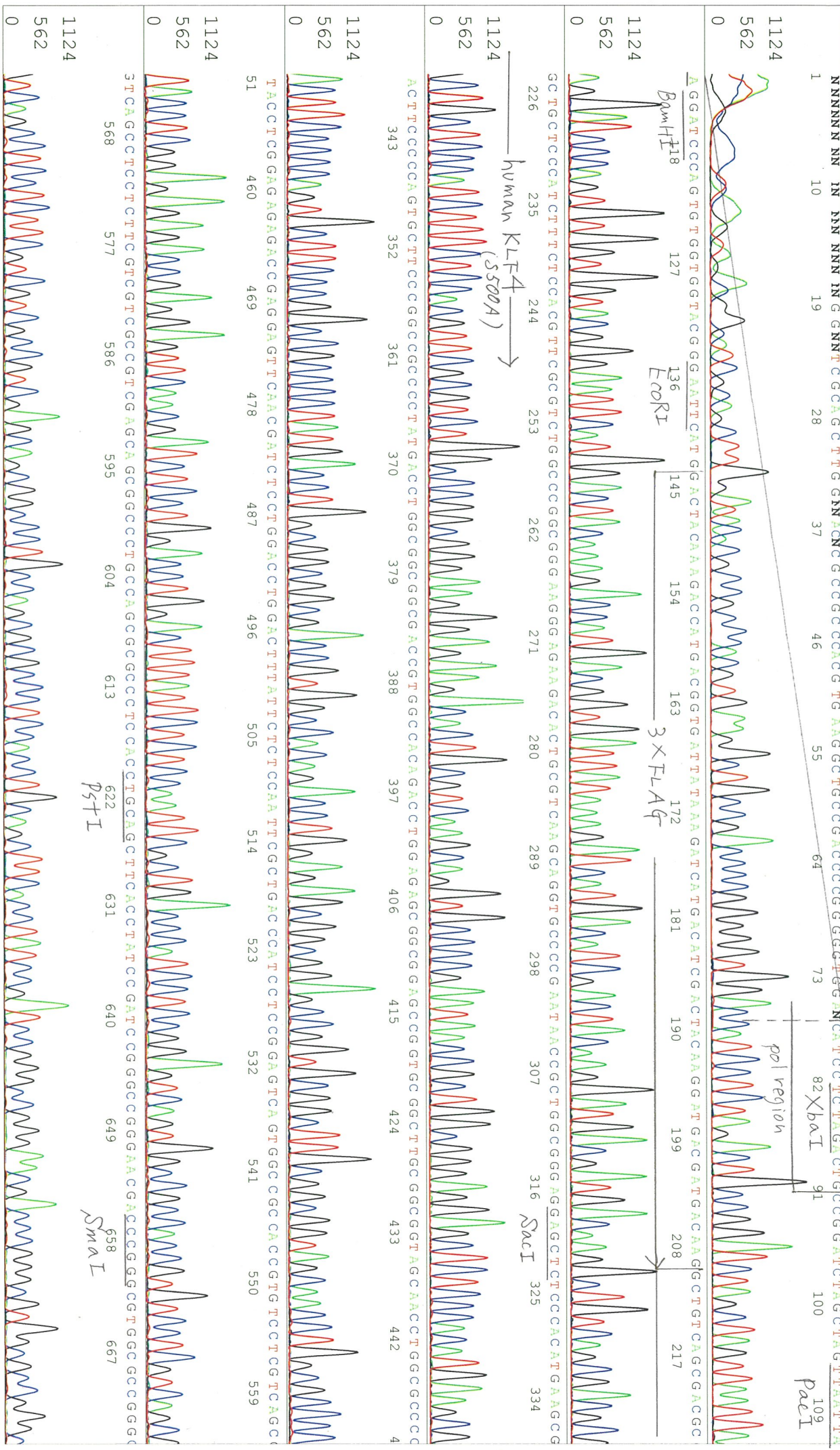
KB.bcp

KB 1.4.1.8 Cap:1

primer name A : MMLV-pol\_F

5'-AGGACCTTACACAGCTCCTGCTG-3'

KB\_3500\_POP7\_BDTv3.mob  
Pis 1433 to 13835 Pk1 Loc: 1410  
Version 6.0 HISQV Bases: 959







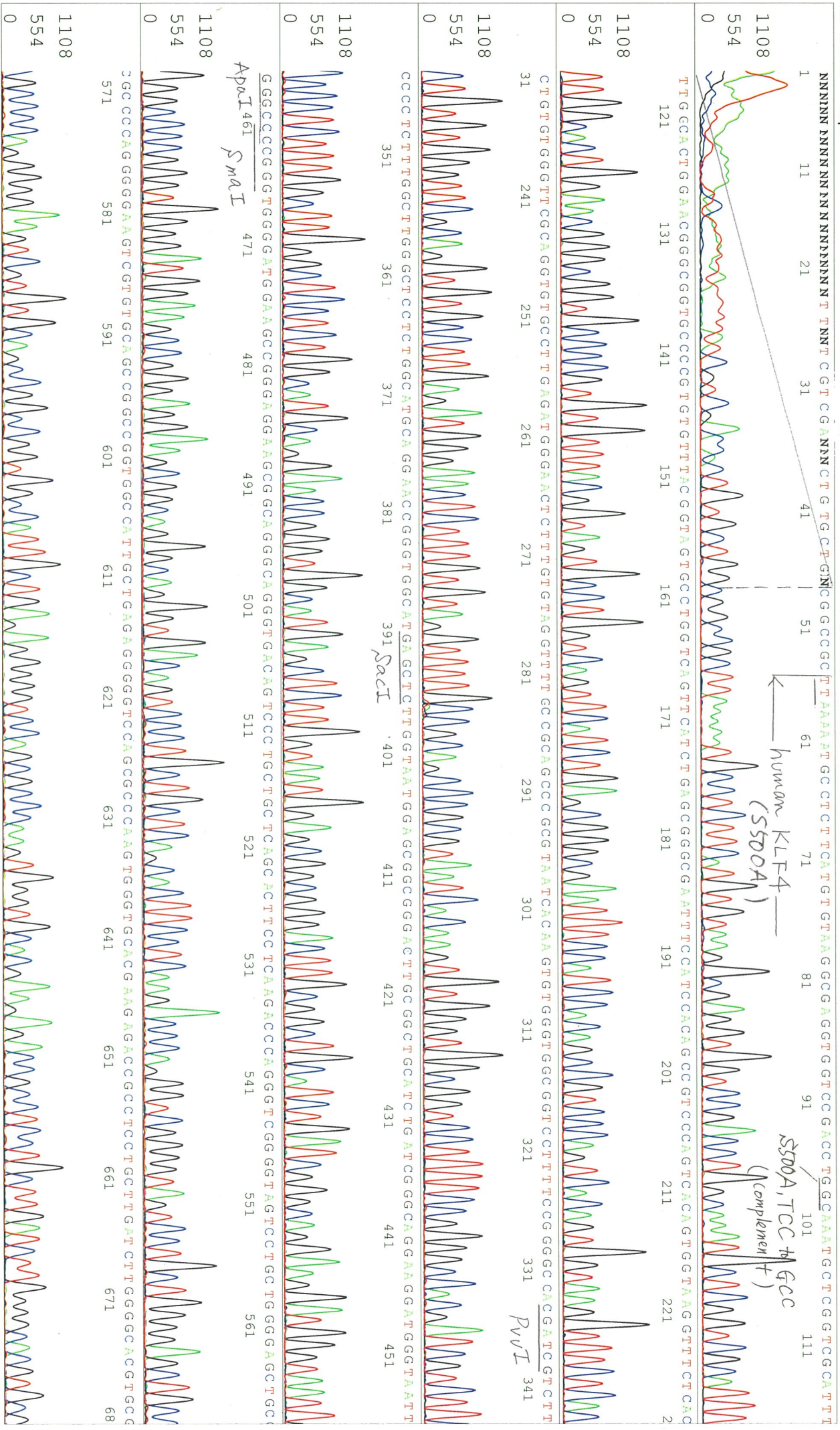












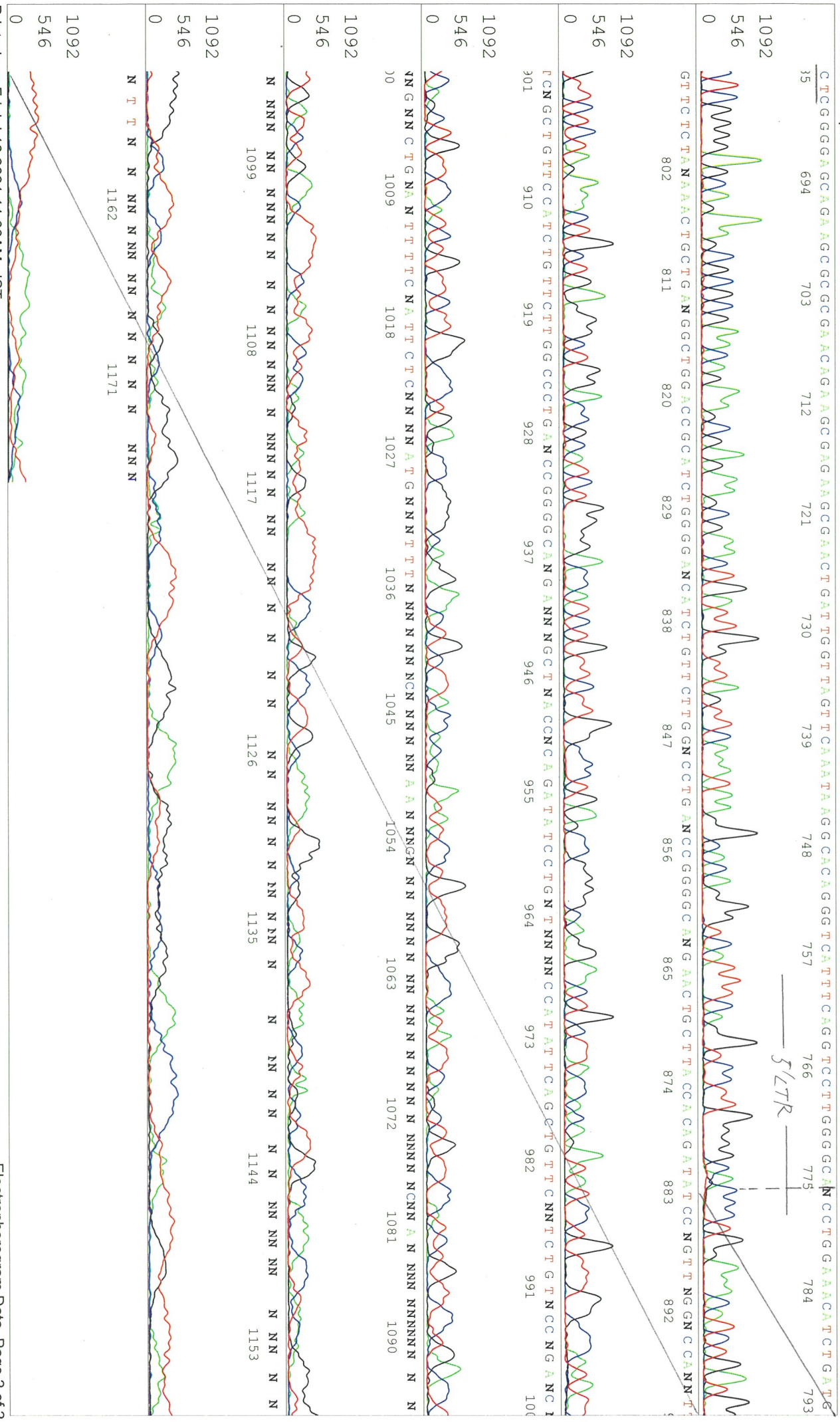










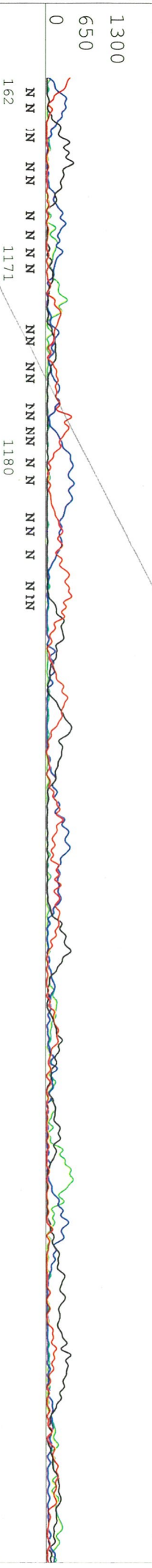
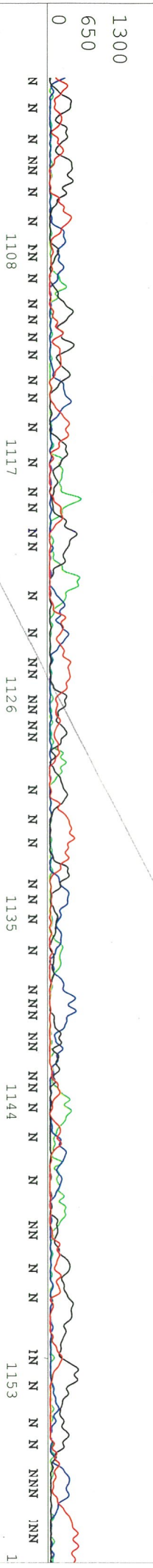
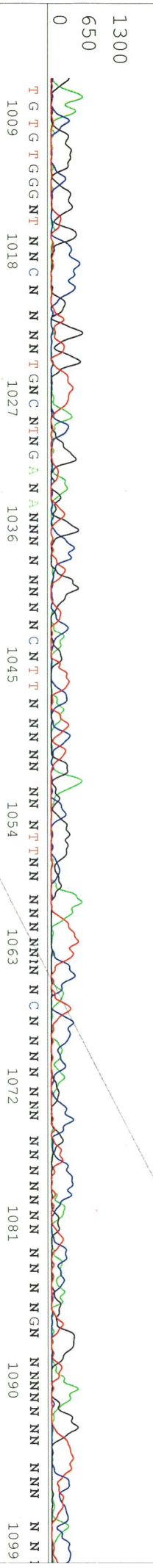
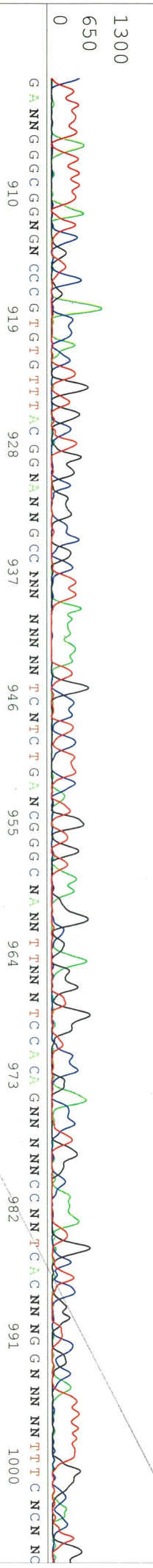
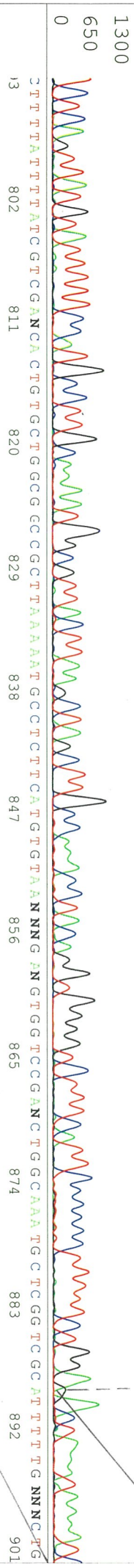








TCTCA GTTAT GTATT TTTTCCATGCCCTTGCAAAATGGCGTTACTTAAAGCTAAGCTTGGCCAAACCTACAGGTGGGTCTTCAATCCCCCTTTCTTGGA NA CTAATAAAAT  
 685 694 703 712 721 730 *MheI* 739 748 757 766 775 784 795



Printed on: Fri Jul 16,2021 11:38AM, JST