

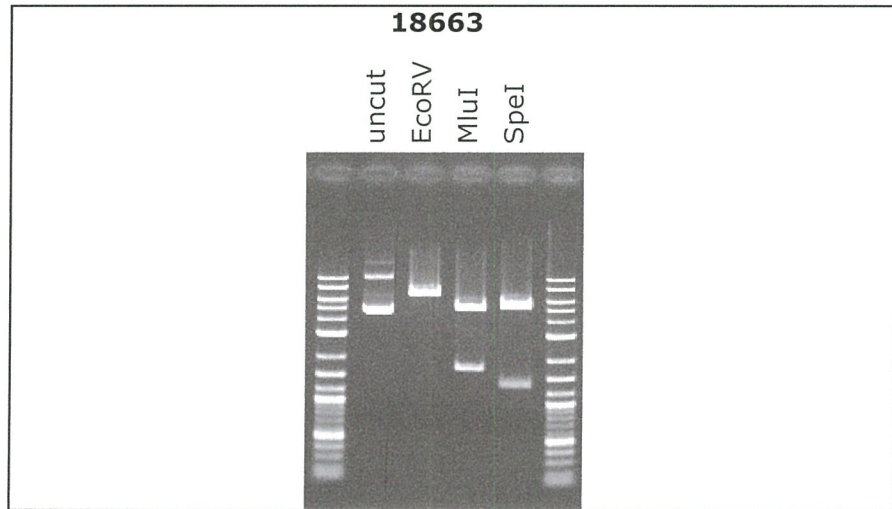
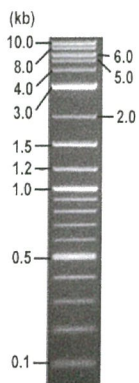


**RIKEN DNA BANK**

clone name : **pMM86 pcDNA3.1-ERj1 1-200-V5-GFP1-10**

- **Clone ID** : RDB\_ 18663
- **Lot** : 18663\_ B0Ln
- **DNA Concentration** : 25 nanogram/microliter
- **Volume** : 40 microliter
- **Form** : DNA solution in TE buffer
- **Host** : DH5 alpha
- **Culture** : LB medium
- **Antibiotics** : 100 microgram/ml Ampicillin
- **Purification** : QIAGEN QIAprep Spin Miniprep kit
- **Digestion by restriction enzyme**

1 kb Plus DNA Ladder  
(NEB#N3200L),  
250 ng/well



Electrophoresis : 100 nanogram DNA per lane ; 1% agarose gel , 1 x TAE Buffer

Restriction enzyme	Expected size of fragment	
<b>EcoRV</b>	<b>6.7</b>	kbp
<b>MluI</b>	<b>5.0, 1.7</b>	kbp
<b>SpeI</b>	<b>5.3, 1.4</b>	kbp
		kbp

● **Confirmation of the insertion sequence**

Please be sure to check our sequence analysis results before your request.

Sequence name	Primer ID	Primer name	Confirmed feature
Sequence - A	Pr0016	CMV_Forward	CMV pro, insert 5' (hERj1 (1-200), V5 tag)
Sequence - B	Pr0885	bGH_rev3	bGH pA, insert 3' (GFP 1-10)
Sequence - C	Pr0893	paGFP-M_R1	insert mid (GFP1-10 5', V5 tag, hERj1 (1-200) 3')
Sequence - D	Pr0731	SV40pro_ori_F	SV40 pro_ori, NeoR
Sequence - E	-	-	-
Sequence - F	-	-	-
Sequence - G	-	-	-
Sequence - H	-	-	-

APPROVED BY :



S/N G:80 A:54 T:40 C:46

KB.bcp

KB\_3500\_POP7\_BDTV3.mob

Feb 02, 2021 02:38PM, JST

KB 1.4.1.8 Cap:1

5- GCACCAAAATCAACGGGACTT -3'

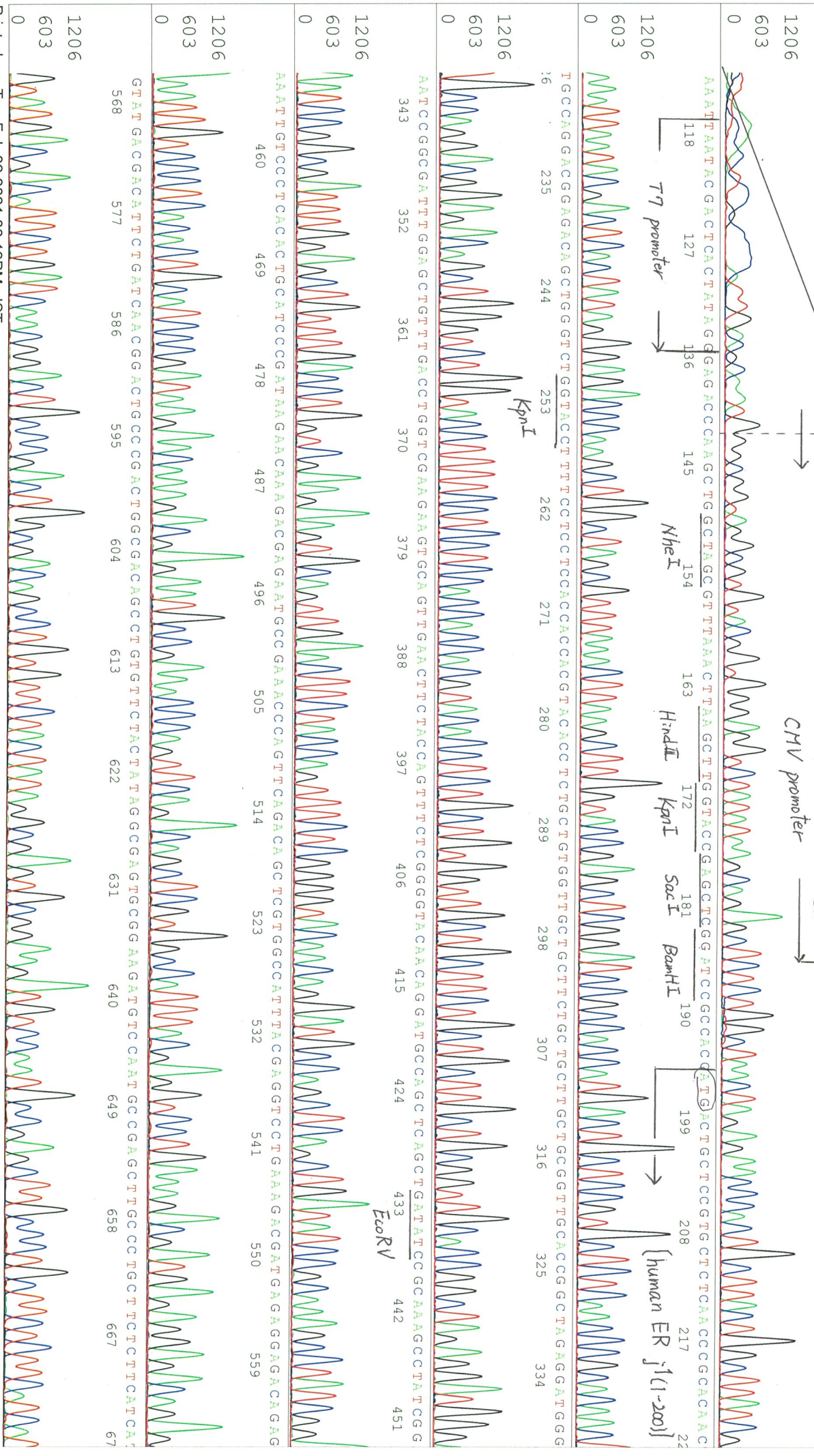
Pts 1494 to 13725 Pk1 Loc:1471

Feb 02, 2021 03:06PM, JST

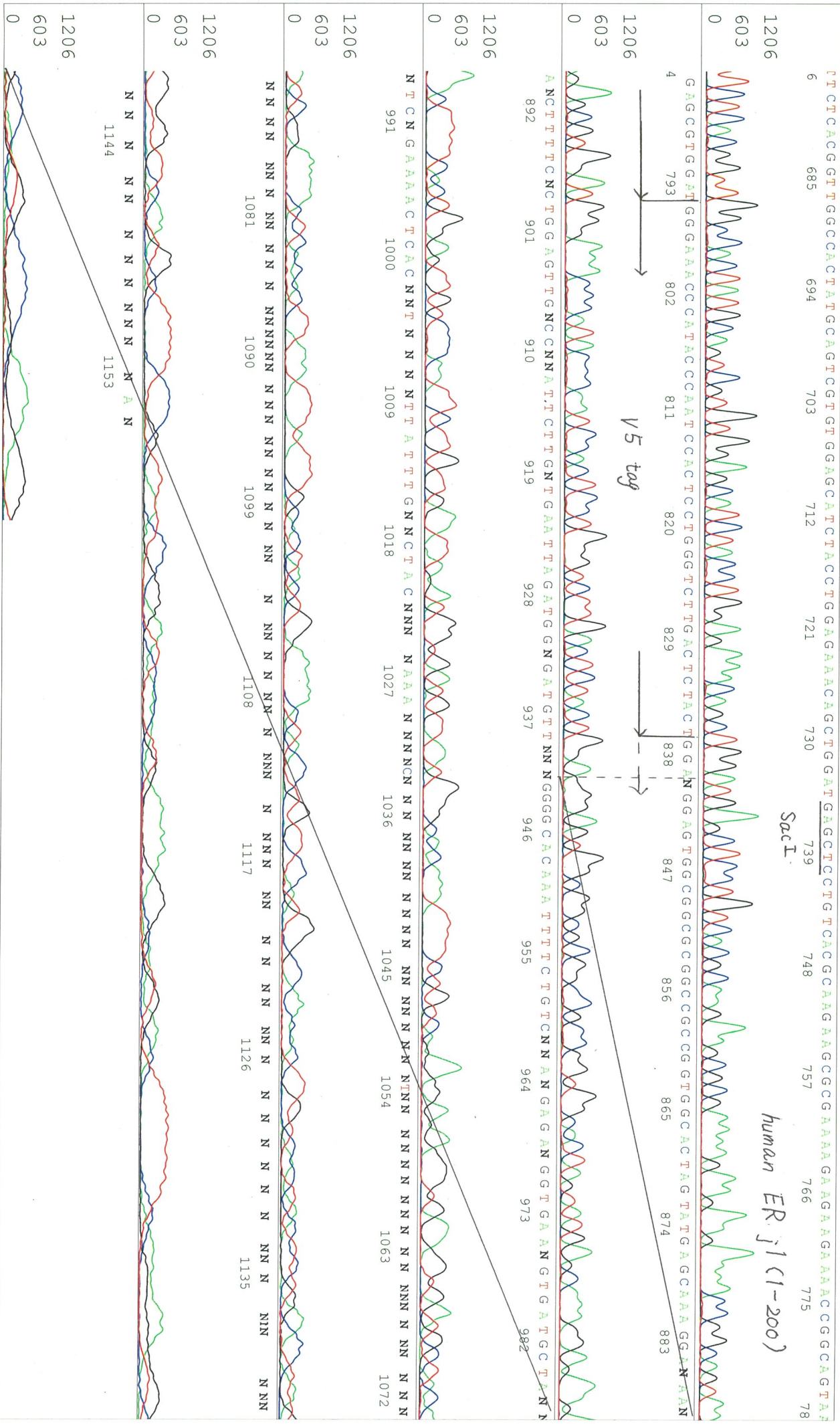
Version 6.0 HiSQV Bases: 975

Spacing:12.15 Pts/Panel1350

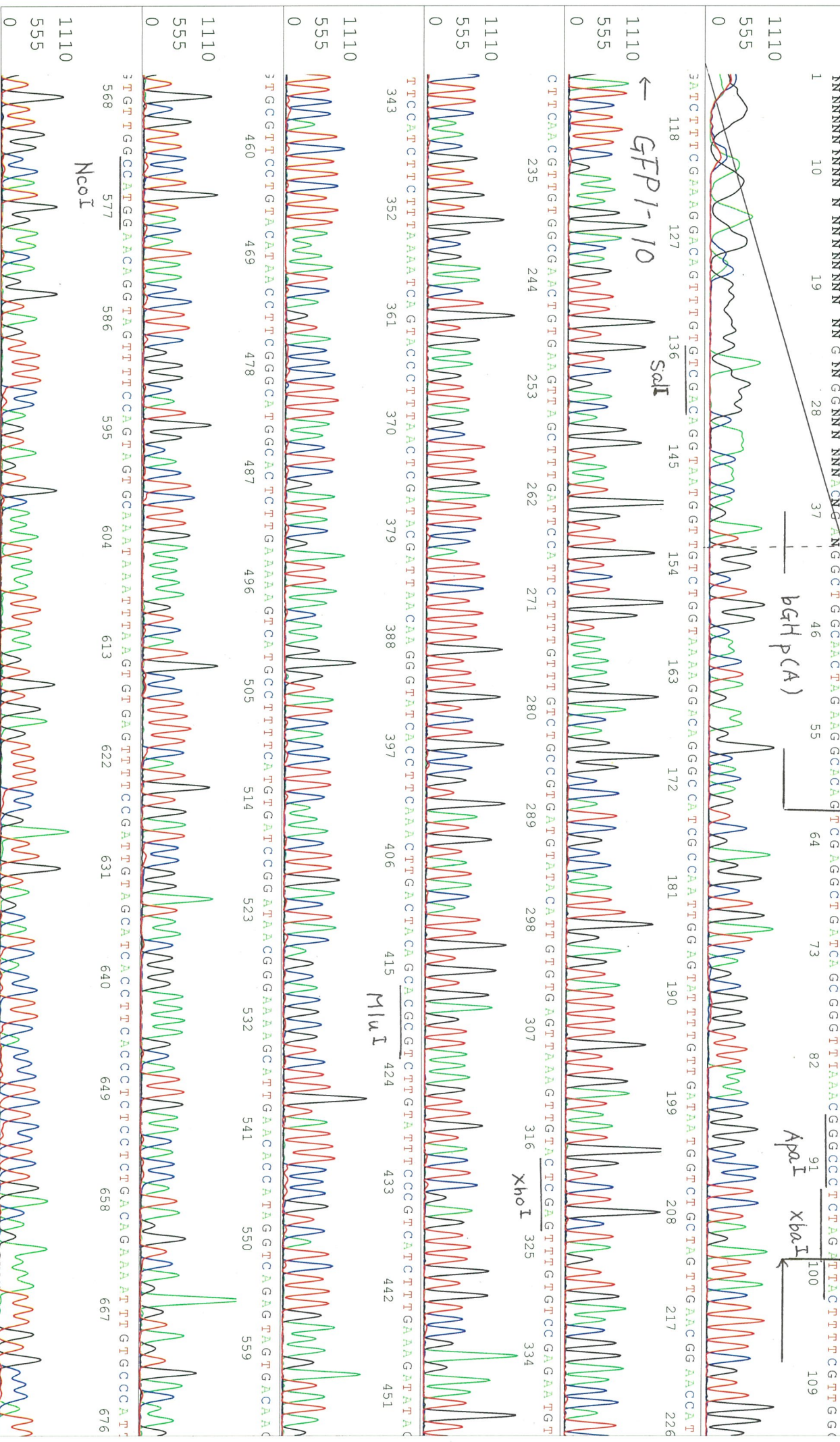
Plate Name: 20210202 mix













FAACATCAACCATTCTTAATTCACAACAA GAATTTGGGACAACTCCAGTGAATAAGTTCTTCCTTTCCTTTGCTCATACTAGTGGCCACCN  
685 694 703 712 721 730 739 748 757 766 775 784

*GFP1-10*

← *SpeI*

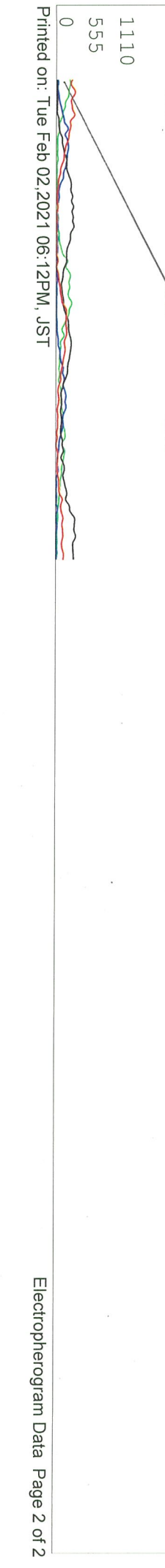
3TCAA GANCCANGANTGGATTGGGTATGTTCCCA TCCNCGCTCTTACTGCCCGTTTCTTCTTCCTTTCGCGCTTCTTGCNGANAGGANC TCA TTCAGCTGN  
793 802 811 820 829 838 847 856 865 874 883 8

T TCTCCNNGNANANGCTCCACACN ANTG C NTAN NG NNA ACCG N GAGAA T GAN GAA NAGA ANCN NNNCNANGN CN CNG N T T NGNNNTCTTNCNCACNN  
92 901 910 919 928 937 946 955 964 973 982 991

NNNANNTANAANN CNNG NT G NNG NCN AN NNN N GN NNN NNN N N NNN ANNN NN N NN NN NN NN NN NN NN NN NN NN NTNN  
1000 1009 1018 1027 1036 1045 1054 1063 1072 1081

1 N NN N NNN N NNA N NNNN NNN NN NNN NN NN N NN N N NNN N N NNN N N NNN N N NNN N N NNN  
1090 1099 1108 1117 1126 1135 1144

NN NN NN NN NN N N NNN NN NN N NNN NN NN N NN NN N N NN NN N N NN NN N N NN NN  
1153 1162 1171





S/N G:36 A:32 T:27 C:27

D07536A9-B0Ln\_1\_paGFP-M\_R1

primer name C : paGFP-M\_R1

KB\_3500\_POP7\_BDTV3.mob

KB.bcp

5'-TAGTGCCTTCTGTACATAACC-3'

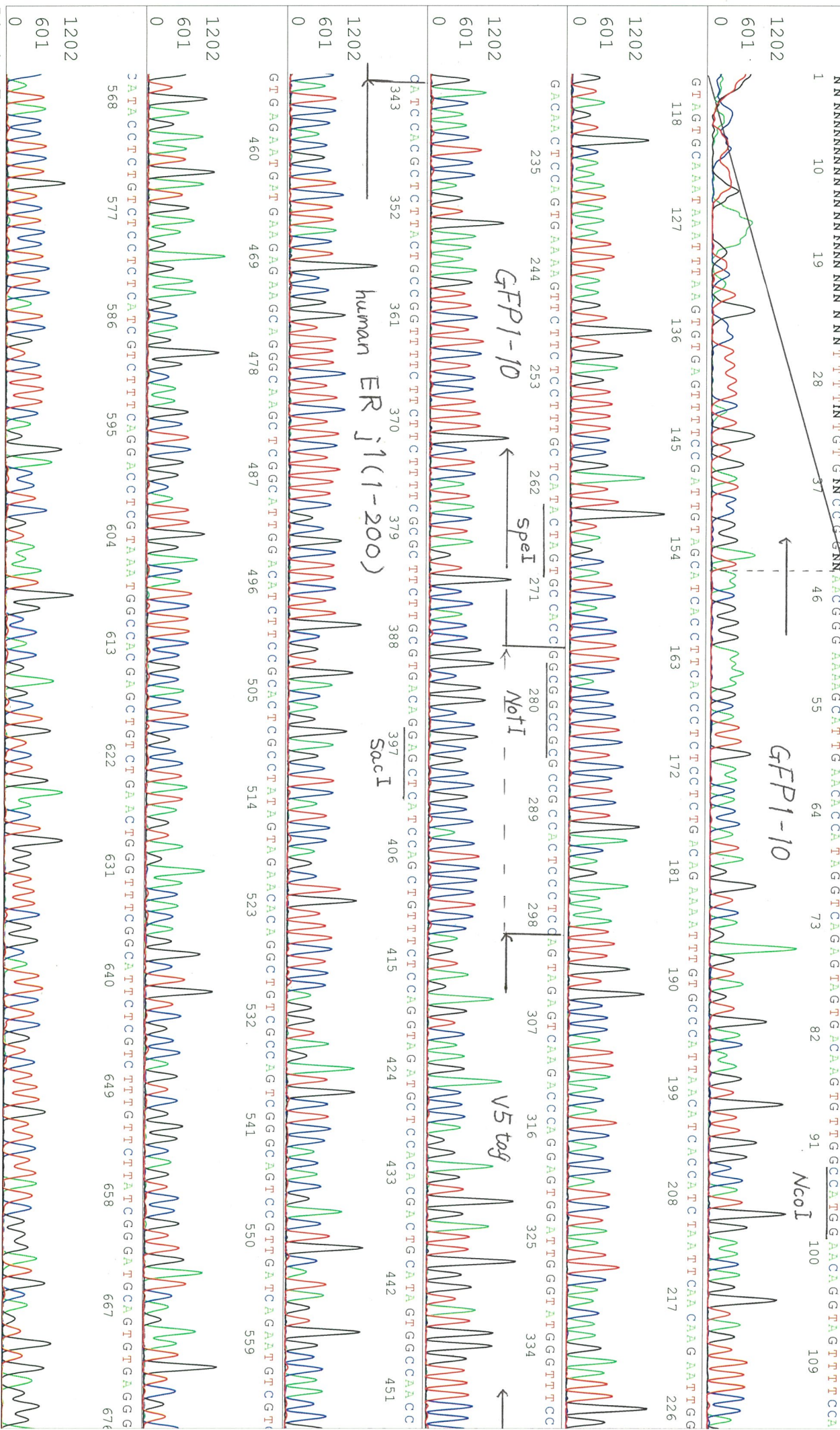
Pis 1459 to 13661 Pk1 Loc:1436

KB 1.4.1.8 Cap:7

Version 6.0 HiSQV Bases: 963

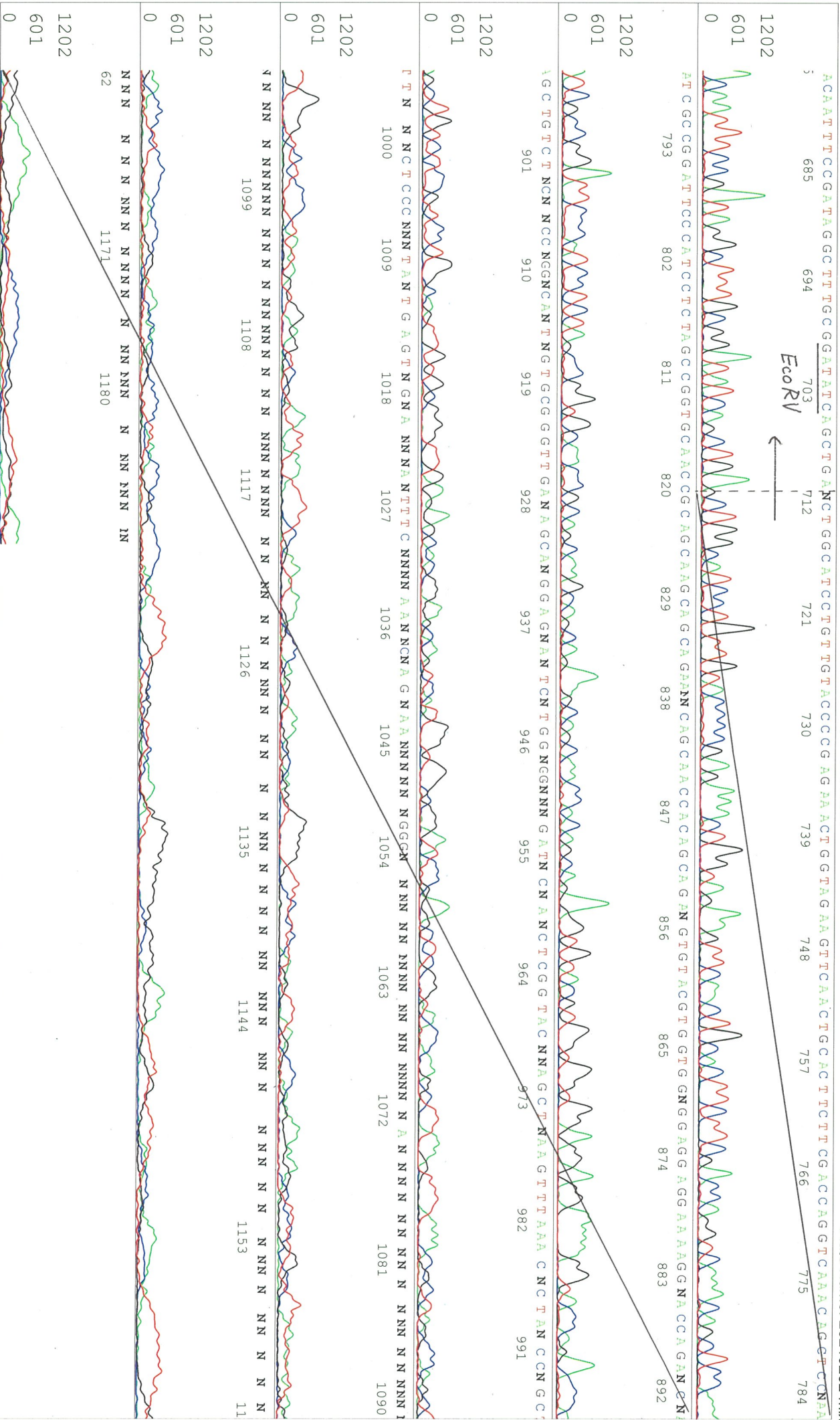
Spacing:12.03 Pts/Panel1350

Plate Name: 20210202 mix





SN G:36 A:32 T:27 C:27  
 KB bcp  
 KB 1.4.1.8 Cap:7



Printed on: Tue Feb 02,2021 06:12PM, JST



S/N G:122 A:63 T:53 C:60

primer name D : SV40pro\_ori\_F

D07536A9-B0Ln\_1\_SV40pro\_ori\_F  
KB\_3500\_POP7\_BDTV3.mob  
Pts 1502 to 13808 Pk1 Loc:1479

Feb 02, 2021 02:38PM, JST  
Feb 02, 2021 03:06PM, JST  
Spacing:12.15 Pts/Panel1350

KB.bcp

5'- TTCTCCGCCCCATGGCTGACTAAT -3'

Version 6.0 HiSeqV Bases: 958

Plate Name: 20210202 mix

