

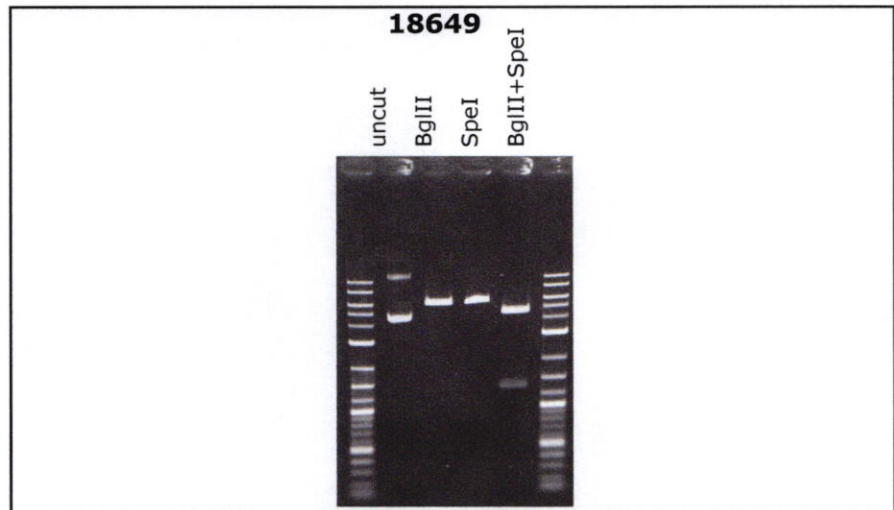


RIKEN DNA BANK

clone name : **pEF-Myc-M-INK**

- Clone ID : RDB_18649
- Lot : 18649_B0Lm
- DNA Concentration : 25 nanogram/microliter
- Volume : 40 microliter
- Form : DNA solution in TE buffer
- Host : DH5 alpha
- Culture : LB medium
- Antibiotics : 100 microgram/ml Ampicillin
- Purification : QIAGEN QIAprep Spin Miniprep kit
- Digestion by restriction enzyme

1 kb Plus DNA Ladder
(NEB#N3200L),
250 ng/well



Electrophoresis : 100 nanogram DNA per lane ; 1% agarose gel , 1 x TAE Buffer

Restriction enzyme	Expected size of fragment
BglII	6.0 kbp
SpeI	6.0 kbp
BglII+SpeI	4.6, 1.4 kbp
	kbp

● Confirmation of the insertion sequence

Please be sure to check our sequence analysis results before your request.

Sequence name	Primer ID	Primer name	Confirmed feature
Sequence - A	Pr0168	EF1a-C_F	HA, insert 5'
Sequence - B	Pr0031	hGCSF_R	insert 3'
Sequence - C	Pr0536	pUC-CAPbs_up_F	SV40 pro_ori
Sequence - D	-	-	-
Sequence - E	-	-	-
Sequence - F	-	-	-
Sequence - G	-	-	-
Sequence - H	-	-	-

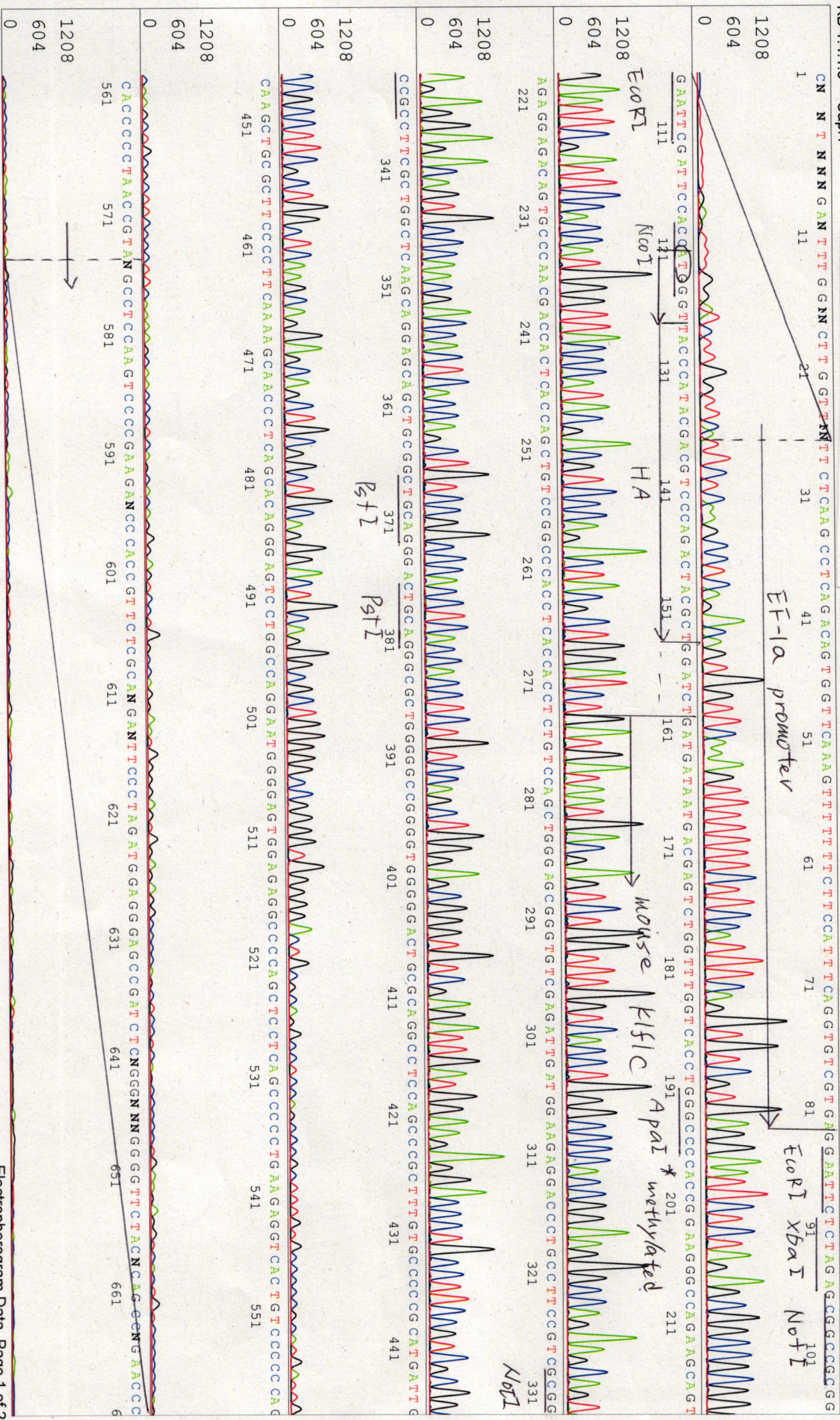
APPROVED BY :



S/N G:2142 A:1223 T:1190 C:14 Primer name A : EF1a-C_F

KB.bcp KB_3500_POP7_BDTV3.mob
Pls 1793 to 8704 Pk1 Loc:1761
Version 6.0 HiSQV Bases: 700

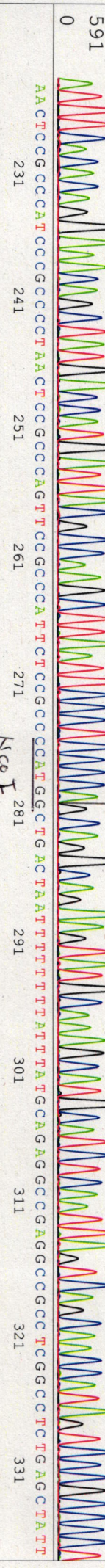
5'-AGTTAGCCACGCTTGGCACCTTGATG-3'



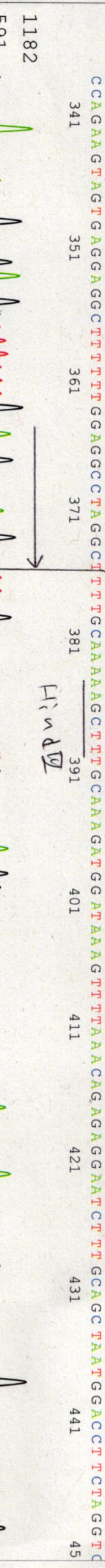
1 11 21 31 41 51 61 71 81 91 101



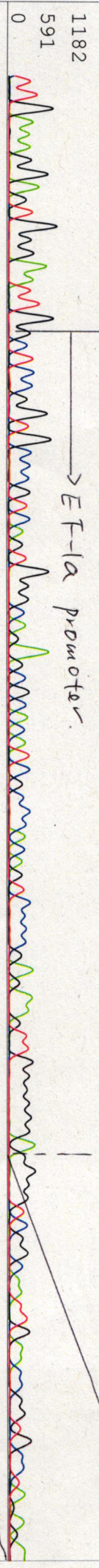
ATTTCAACACAGGAACAAGCTATGACCATGATTACCCCAAGCTTAATTCCTCCCGCAGGCCAGAGATATGCAAAAGCATGCATCTCAATTAATGTCAGCAACCATAGTCCCGCCCT
111 121 131 141 151 161 171 181 191 201 211 221



AACTCCGCCCATCCCGCCCTAACTCCGCCAGTTCGCCCAATCTCCGCCCATGGCTGACTAATTTTATTATGCAAGAGCCGAGGCCCTCGGCTCTGAGCTAAT
231 241 251 261 271 281 291 301 311 321 331



CCAGAAAGTAGTAGGAGGCTTTTGGAGGCCCTAGGGCTTTTGCAAAAGCTTTGCAAAAGATGGATAAATTTTAAACAAGAGGAAATCTTGCACTAATGACCTCTTAGGTC
341 351 361 371 381 391 401 411 421 431 441 45



TTGAAAGGAGTGGGAATTTGCTCCGGTGGCCCGTCAAGTGGGCAAGACATCCGCCCAAGTCCCGGAAAGTTGGGGGGAAGGGTCCGCAATTGAACCGGTGCCNANAGA
471 481 491 501 511 521 531 541 551 561



ANGNCGCCGGGGTAAACTGGGAAAAGTGANGTCCGNANNGNNTTTTCCNNNNNGMNGGGGGANNA NN NN ANNN AN N G N N A N T C N N N N N N N N N N N
571 581 591 601 611 621 631 641 651 661