

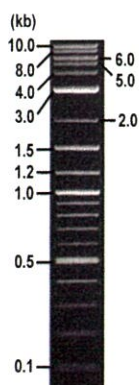


RIKEN DNA BANK

clone name : pCAG-EGxxFP

- Clone ID : RDB_13532
- Lot : 18565_B0le
- DNA Concentration : 25 nanogram/microliter
- Volume : 40 microliter
- Form : DNA solution in TE buffer
- Host : DH5 alpha
- Culture : LB medium
- Antibiotics : 100 microgram/ml Ampicillin
- Purification : QIAGEN QIAprep Spin Miniprep kit
- Digestion by restriction enzyme

1 kb Plus DNA Ladder
(NEB#N3200L),
250 ng/well



Electrophoresis : 100 nanogram DNA per lane ; 1% agarose gel , 1 x TAE Buffer

Restriction enzyme	Expected size of fragment
EcoRI	6.4 kbp
XhoI	6.4 kbp
EcoRI+XhoI	5.8, 0.6 kbp
	kbp

● Confirmation of the insertion sequence

Please be sure to check our sequence analysis results before your request.

Sequence name	Primer ID	Primer name	Confirmed feature
Sequence - A	Pr0328	pCAG-F	CAG pro,Insert 5'(EGxxFP-N)
Sequence - B	Pr0614	pCAGGS_R1	insert 3'(EGxxFP-C)
Sequence - C	Pr0026	EGFP-C-rev	insert mid(EGxxFP-C,MCS,EGxxFP-N)
Sequence - D	-	-	-
Sequence - E	-	-	-
Sequence - F	-	-	-
Sequence - G	-	-	-
Sequence - H	-	-	-

APPROVED BY :

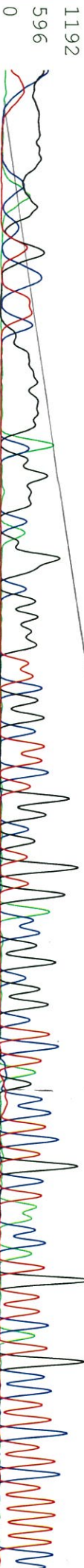


S/N G:205 A:166 T:129 C:194 primer name A : pCAG-F
KB.bcp 5' TTCATCTCCAGCCTCGG3'

13532_18565_B01e_2_pCAG-F
KB_3500_POP7_BDIv3.mob
Pls 1610 to 12435 PK1 Loc:1587
Version 6.0 HISQV Bases: 830

Sep 25,2020 02:59PM, JST
Sep 25,2020 03:27PM, JST
Spacing:11.02 Pls/Panel1350
Plate Name: 20200925_kitaku

NN N NNN NNNN IN IN NNNN N NN NNN NN NN NN N'N GG NG GGG TTCG GCTTCTGGCGNG TG NNCG GCGGCTETTN CCTCTGCTAAACCATGTTGATGCTTCTTCTTTTCC



TACAGCTCC TGGGCAACGTGCTGGTTATTGTGCTGCTCATCATTTTGGCAAA TCTAGAGCCCGCCATGTTGAGCAAGGGGAGGAGCTGTTCACCGGGTGTGCCCATCC

XbaI

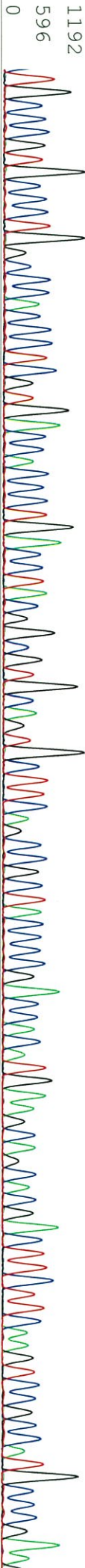
NotI

EGXFP-N

TGGTCGAGCTTG GACGGCGGACGTA AACGGCCGACAA GTTCAGCGTGTCCGGCGGAGGGCGGATGCCA CCTAGCGCAAGCTG AACCTGAA GTTCA TCTGCA CCA CCGGCAAGC



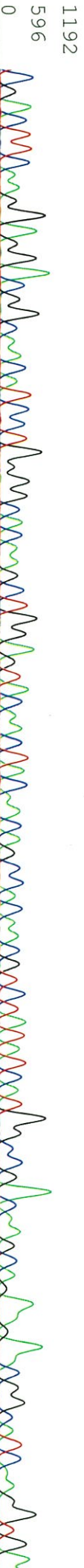
:TGCCCCGTGCCCTGGCCCA CCGCTCGTGACCA CCGCTGACCTAGCGGGCTGCA GTGCTTCAGCCGCTTACC CCGAACCA CATGAA GCA GCCACGACTTCTTCAAGTCCGCCATGCCCGAA



GCTACGCTCCAGGAGCGCCACCA TCTTCTTCAA GGACGAGCGGCAACTA CAA GACC GCGCCGAGGTGAA GTTCGAA GGGCCGCA CCGCTGGTGA ACCCGCATCGAGCTGAA GGGCAT



CGACTTCAA GAGAGGACGGCA ACATCTTGGGGCACAAAGCTGGAGTACAAC TACA ACA GCCCA CCAAGCTTATA TCA TGGCCGACAA GCAAGAA CGGCATCAA GGTGA A



S/N G:1542 A:922 T:1084 C:1283 primer name β :pCAGGS_R1

13532_18565_Bole_2_pCAGGS_R1

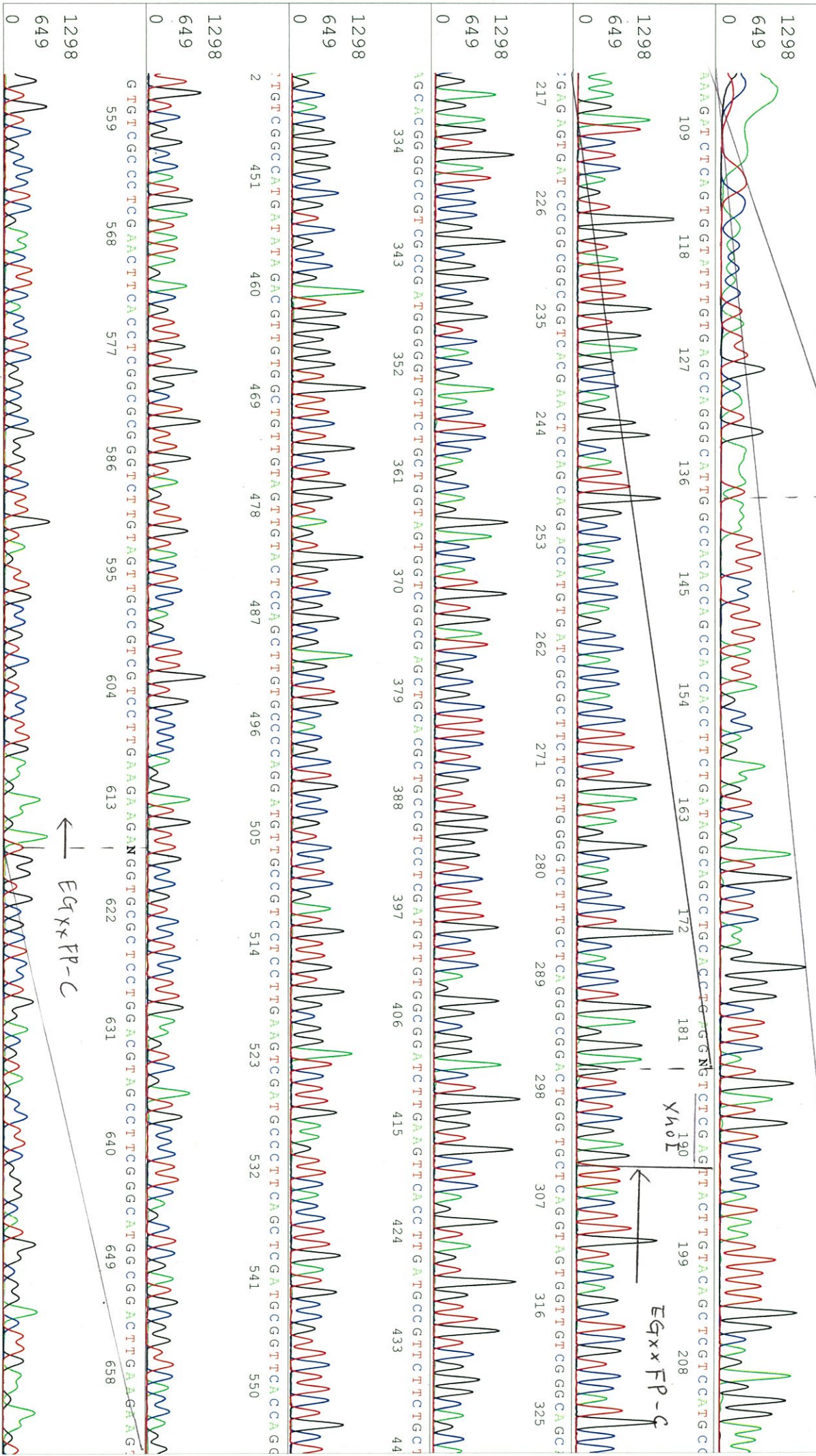
Sep 25, 2020 02:59PM, JST

KB.bcp KB 1.4.1.8 Cap:23 5'TTTGGCCCTCCCATATGTCTCT3'

KB_3500_POP7_BDTV3.mob

Sep 25, 2020 03:27PM, JST

Version 6.0 HisQV Bases: 858



S/N G:1558 A:682 T:899 C:90' primer name C : EGFP-C-rev

KB bcp KB_3500_POP7_BDTV3.mob

Sep 25, 2020 02:59PM, JST

KB 1.4.1.8 Cap:24

5' CAAGAACTCCAGCAGCAGCAGCATTG3'

Pis 1557 to 12334 PK1 Loc:1534

Sep 25, 2020 03:27PM, JST

13532_18565_B01e_2_EGFP-C-rev_H06_24_ABI24
13532_18565_B01e_2_EGFP-C-rev
KB_3500_POP7_BDTV3.mob
Pis 1557 to 12334 PK1 Loc:1534
Version 6.0 HISQV Bases: 860

