

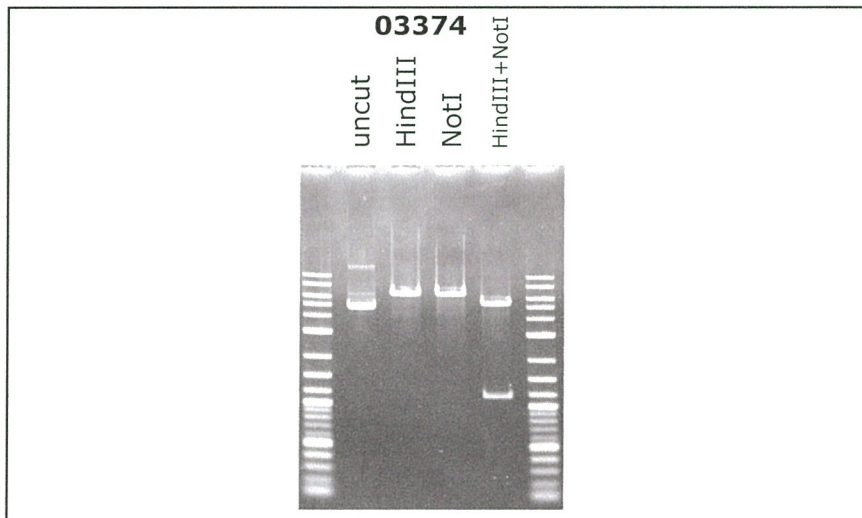
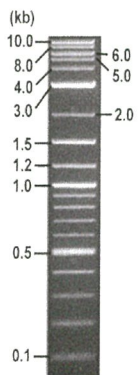


RIKEN DNA BANK

clone name : Human HLA-B*55:02 cDNA

- Clone ID : RDB _ 03374
- Lot : 18371 _ B0Gu
- DNA Concentration : 25 nanogram/microliter
- Volume : 40 microliter
- Form : DNA solution in TE buffer
- Host : DH5 alpha
- Culture : LB medium
- Antibiotics : 100 microgram/ml Ampicillin
- Purification : QIAGEN QIAprep Spin Miniprep kit
- Digestion by restriction enzyme

1 kb Plus DNA Ladder
(NEB#N3200L),
250 ng/well



Electrophoresis : 100 nanogram DNA per lane ; 1% agarose gel , 1 x TAE Buffer

Restriction enzyme	Expected size of fragment
HindIII	6.5 kbp
NotI	6.5 kbp
HindIII+NotI	5.4, 1.2 kbp
	kbp

● Confirmation of the insertion sequence

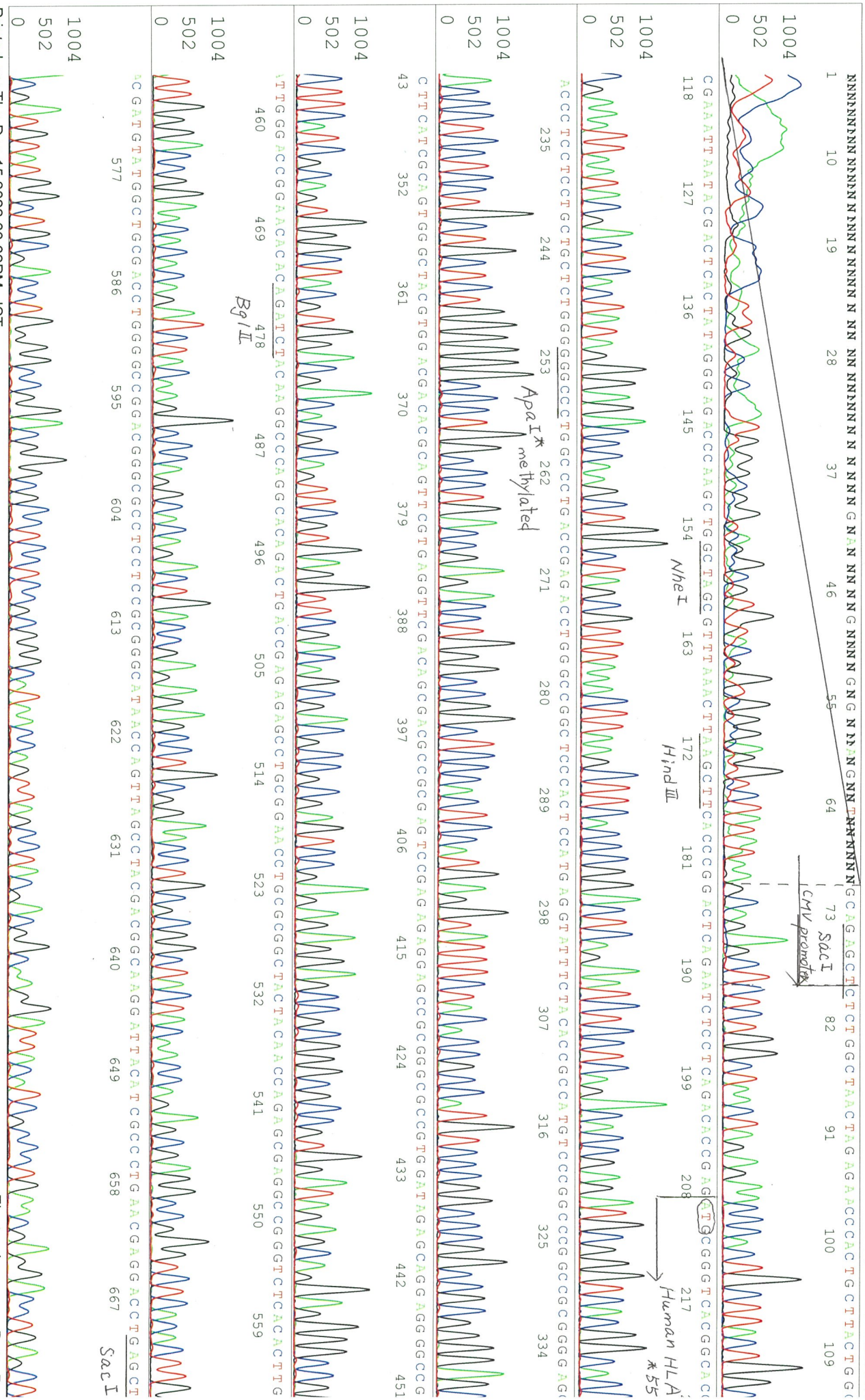
Please be sure to check our sequence analysis results before your request.

Sequence name	Primer ID	Primer name	Confirmed feature
Sequence - A	Pr0016	CMV_Forward	CMV pro,insert 5'
Sequence - B	Pr0606	BGH_rev2	bGH pA,insert 3'
Sequence - C	Pr0731	SV40pro_ori_f	SV40 pro_ori,NeoR
Sequence - D	-	-	-
Sequence - E	-	-	-
Sequence - F	-	-	-
Sequence - G	-	-	-
Sequence - H	-	-	-

APPROVED BY



03374_18371_B2L7F_CMV_Forward_F01_16_AB124
03374_18371_B2L7F_CMV_Forward



S/N G:349 A:323 T:362 C:605

primer name : BGH_rev2

KB_bcp KB_3500_POP7_BDTV3.mob

Aug 05,2020 01:561

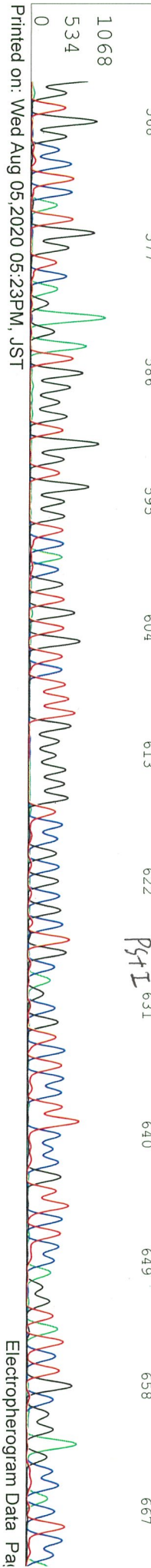
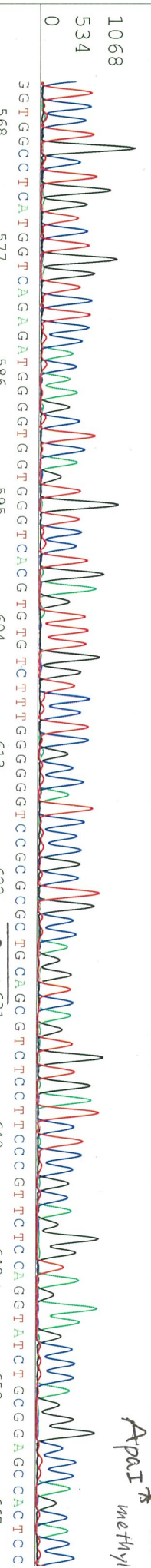
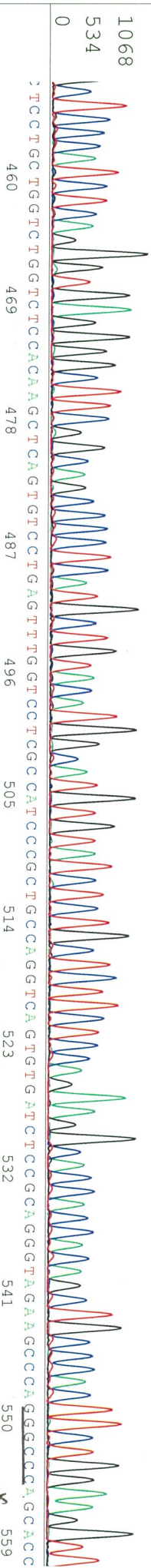
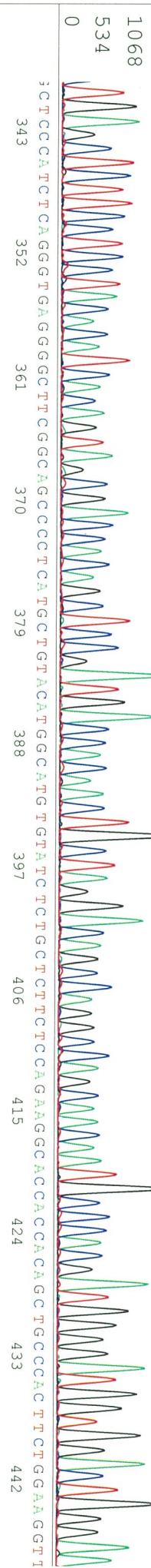
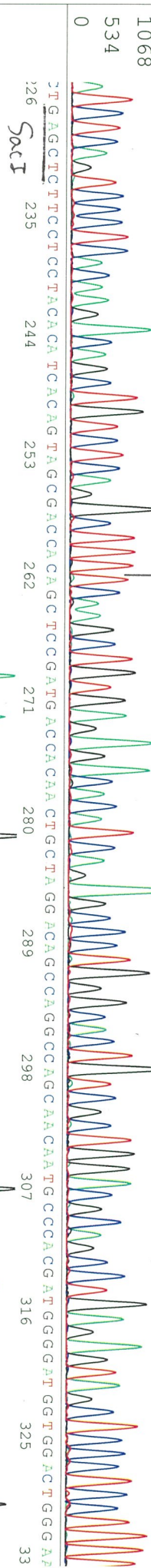
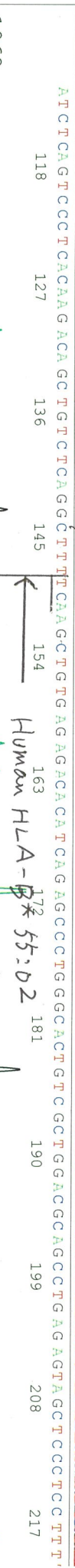
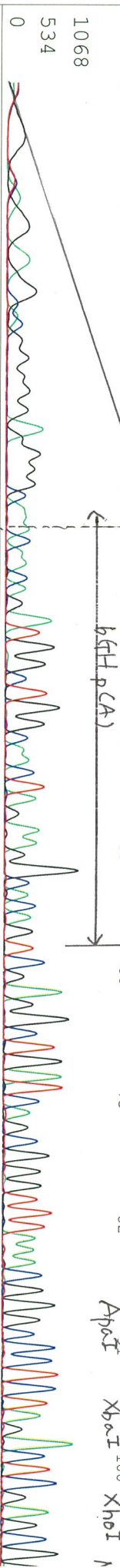
KB 1.4.1.8 Cap:4

5' TATTAGGAAGGACAGTGGG 3'

Pts 1437 to 13523 PK1 Loc:1414

Aug 05,2020 02:381

Version 6.0 HISQV Bases: 897



SN G:377 A:315 T:371 C:566 primer name C : SV40pro_ori_F
 KB bcp KB 1.4.1.8 Cap:7 5' TTCTCCGCCCATGGCTGACTAAT3' Pts 1466 to 13513 PK1 Loc:1443
 Version 6.0 HISQV Bases: 925

KB 3500_POP7_BDTV3.mob
 Pts 1466 to 13513 PK1 Loc:1443
 Version 6.0 HISQV Bases: 925

Aug 05,2020 01:56f
 Aug 05,2020 02:38f
 Spacing:12.05 Pts/Pa
 Plate Name: 202001

