

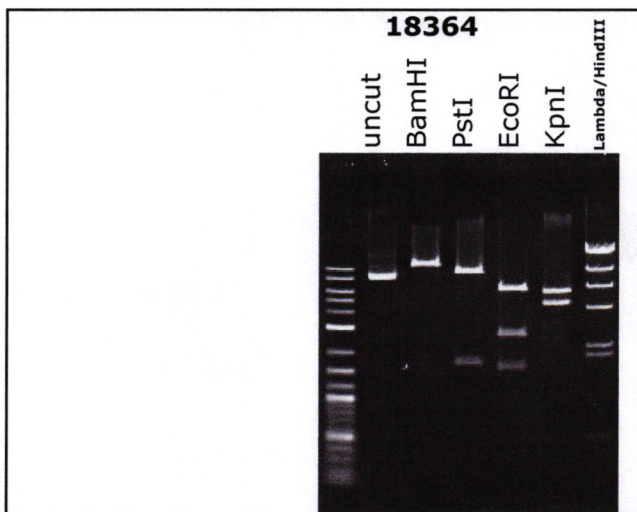
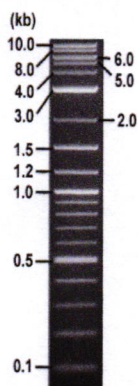


**RIKEN DNA BANK**

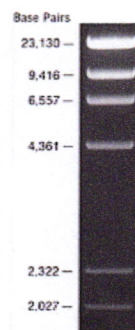
clone name : **pMK411 (F74G mAID-EGFP-Nluc)**

- **Clone ID** : RDB\_18364
- **Lot** : 18364\_B0Gf
- **DNA Concentration** : 25 nanogram/microliter
- **Volume** : 40 microliter
- **Form** : DNA solution in TE buffer
- **Host** : NEB stable
- **Culture** : LB medium
- **Antibiotics** : 100 microgram/ml Ampicillin
- **Purification** : QIAGEN QIAprep Spin Miniprep kit
- **Digestion by restriction enzyme**

1 kb Plus DNA Ladder  
(NEB#N3200L),  
250 ng/well



Lambda DNA-HindIII  
Digest (NEB#N3012)



Electrophoresis : 200 nanogram DNA per lane ; 1% agarose gel , 1 x TAE Buffer

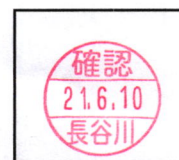
Restriction enzyme	Expected size of fragment
<b>BamHI</b>	<b>11.0</b> kbp
<b>PstI</b>	<b>9.2, 1.8</b> kbp
<b>EcoRI</b>	<b>6.5, 2.8, 1.7</b> kbp
<b>KpnI</b>	<b>6.1, 4.9</b> kbp

● **Confirmation of the insertion sequence**

Please be sure to check our sequence analysis results before your request.

Sequence name	Primer ID	Primer name	Confirmed feature
Sequence - A	Pr0100	reverse-2	Tol2L200,CMV en,chicken beta-actin pro,
Sequence - B	Pr0495	pCAG-F_V3	chimeric intron, OsTIR1(F74G) 5'
Sequence - C	Pr0127	YFP_R	EGFP 5', mAID, P2A, OsTIR1(F74G) 3'
Sequence - D	Pr0402	EGFP-C2	EGFP 3', Linker, Nluc,
Sequence - E	Pr0793	PGKpro_R	PGKpro, loxP, SV40 pA, Nluc
Sequence - F	Pr0249	PGKpro_F	HygR
Sequence - G	Pr0310	pUC-M13_-100	Tol2R175, loxP, mouse PGK ter
Sequence - H	-	-	-

APPROVED BY :



S/N G:27 A:21 T:28 C:1 primer name **A** :reverse-2  
KB.bcp  
KB 1.4.1.8 Cap:1 5'-GCGGATAACAATTTACACACAGG-3'

D07105D5\_B0Gf\_3\_reverse-2  
KB\_3500\_POP7\_BDTv3.mob  
Pts 1384 to 13768 Pk1 Loc:1361  
Version 6.0 HiSQV Bases: 790

Jun 04, 2021 02:02PM, JST  
Jun 04, 2021 02:29PM, JST  
Spacing:12.35 Pts/Panel1350  
Plate Name: 20210604 kitaku

