

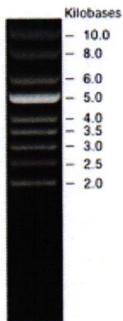


RIKEN DNA BANK

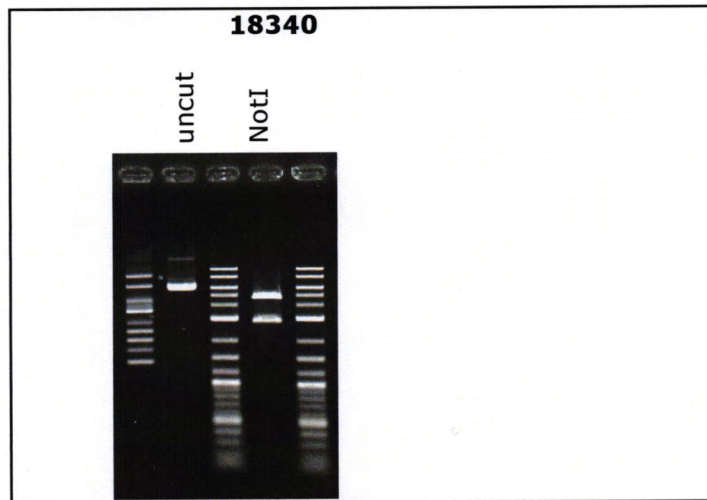
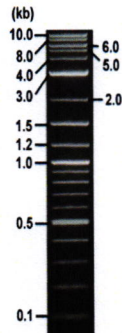
clone name : pAAV-hSyn-OsTIR1(F74A)

- Clone ID : RDB_18340
- Lot : 18340_B0Gf
- DNA Concentration : 25 ng/μL
- Volume : 40 μL
- Form : DNA solution in TE buffer
- Host : NEB stable
- Culture : LB medium
- Antibiotics : 100 μg/mL Ampicillin
- Purification : QIAGEN QIAprep Spin Miniprep kit
- Digestion by restriction enzyme

Supercoiled DNA Ladder (NEB#N0472S), 250 ng/well



1 kb Plus DNA Ladder (NEB#N3200L), 250 ng/well



Electrophoresis : 100 ng DNA per lane ; 1% agarose gel , 1 x TAE Buffer

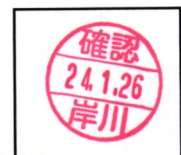
Restriction enzyme	Expected size of fragment
NotI	4.7, 2.9 kbp
_____ :	_____ kbp
_____ :	_____ kbp
_____ :	_____ kbp

● Confirmation of the insertion sequence

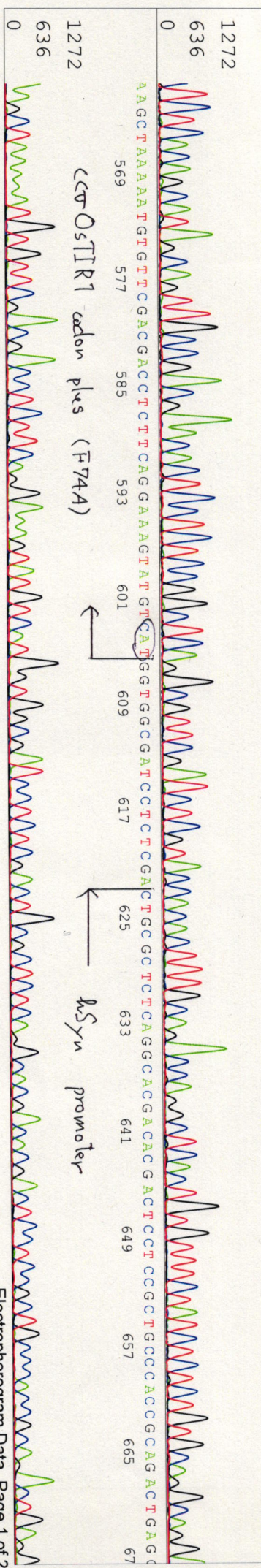
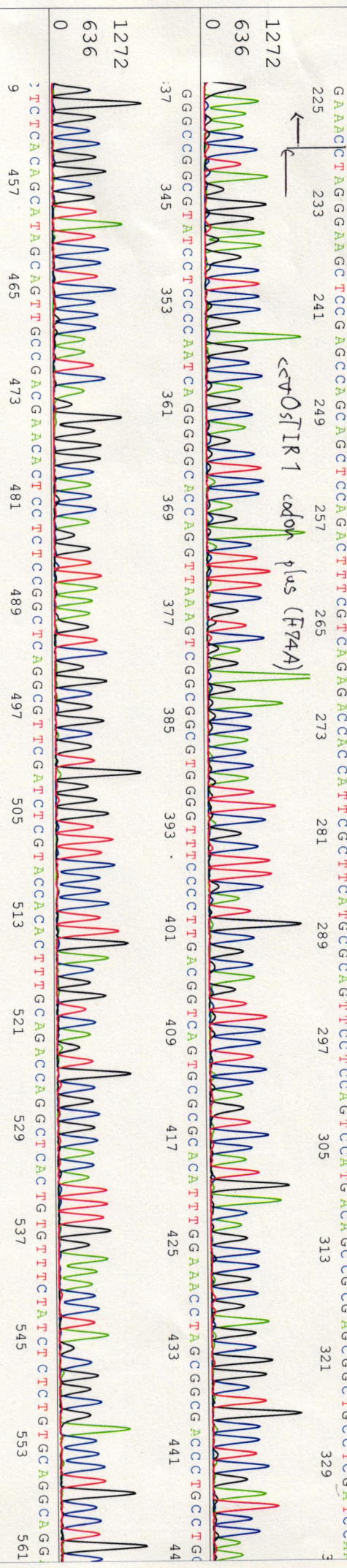
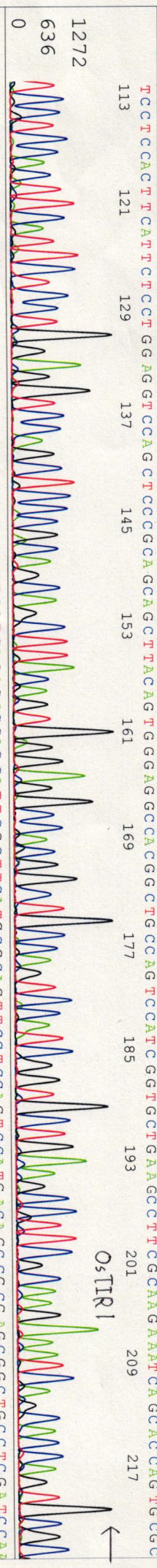
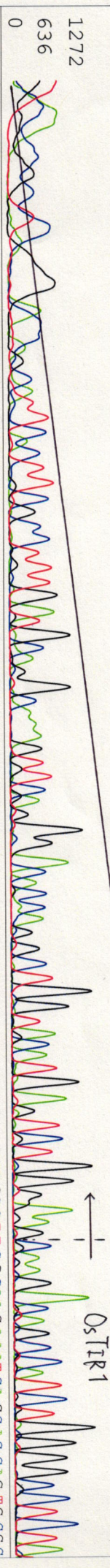
Please be sure to check our sequence analysis results before your request.

Sequence name	Primer ID	Primer name	Confirmed feature
Sequence - A	Pr0891	OsTIR1_R2	OsTIR1 5',ccvOsTIR1 codon plus (F74A),hSyn pro
Sequence - B	Pr0905	EGFP-N_R2	EGFP 3',NES
Sequence - C	Pr0156	EGFP-N_rev	EGFP 5',mini-AID,P2A,OsTIR1 3'
Sequence - D	Pr0402	EGFP-C2	EGFP 3',NES,SV40 pA,WPRE
Sequence - E	Pr1194	SV40_F2	WPRE,bGH pA,AAV2 ITR
Sequence - F	-	-	-
Sequence - G	-	-	-
Sequence - H	-	-	-

APPROVED BY :

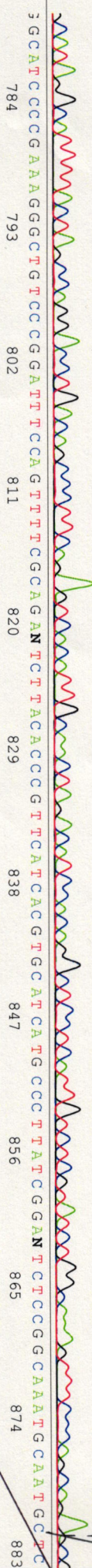


1 9 17 25 33 41 49 57 65 73 81 89 97 105
NNNNN NNNN NNNNNN NNTT NCTTCGCCNTTG NGN GGN GCAANGTTCNNNGG NNNCCA NGCTGGTACATGANCTCGNNANCAAGACAGCCACTCTGGGCCCTTA



GCATAGGCATTTTACTTAGCCAGGACCTGTACAGCCCTTCAGAGTCCACATTTGCCAATGAGACATCCCAAGGCTCCCTCATTTCTCGTATCTGGCAAGTTTCCCAAGGAGAN

O₅TR₁

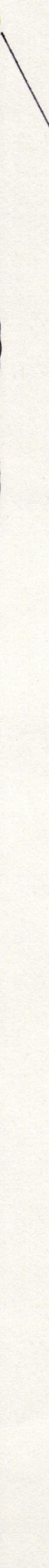


AGCCATCTCCAGCTGCTGCTNNANCATACNNGCCNANGTACATGAAACACTTGTCTGTCAAGCNNNNCNGAANNGCTCCANNCCNNNNANNNCCNNNNNNNNNN

ACNANANC TNNNAANCNNNNNNNNNNNNNNNGNNGGNNNNNNNNNNNNNNNGN N NNNNNNNNNNNNNNNNNNNNNNNNNNNNNNNNNNNNNNN

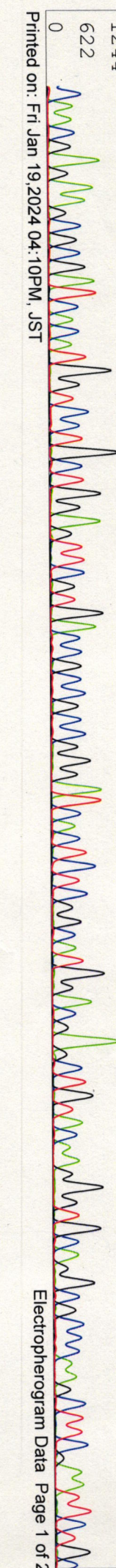
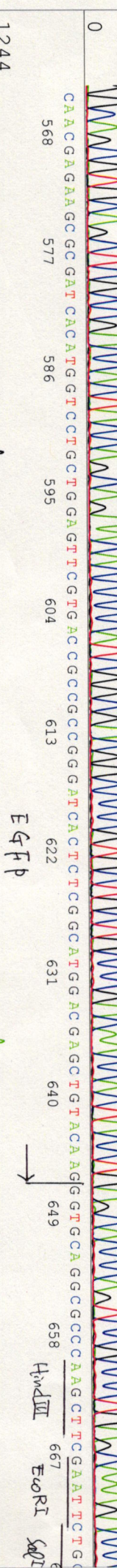
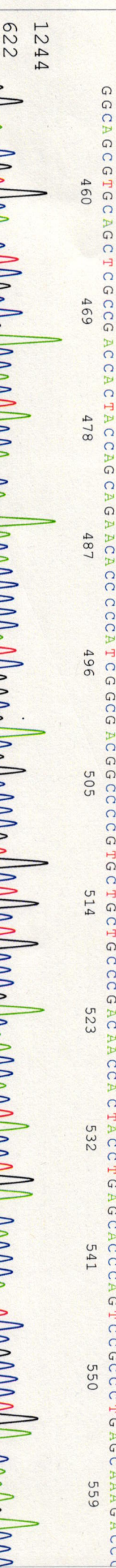
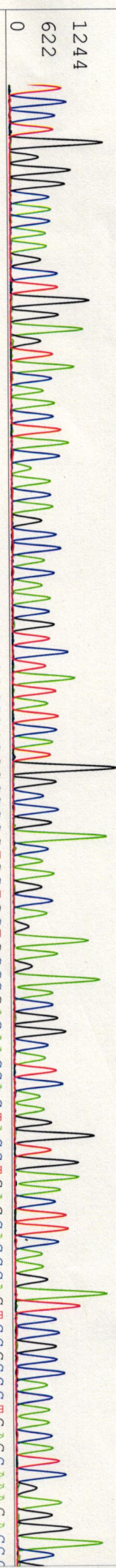
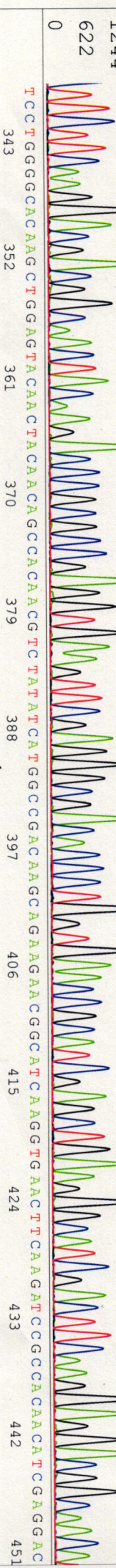
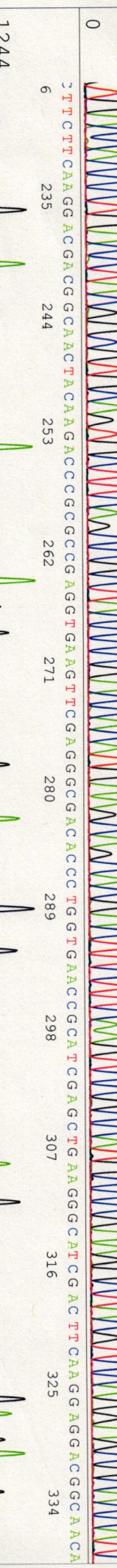
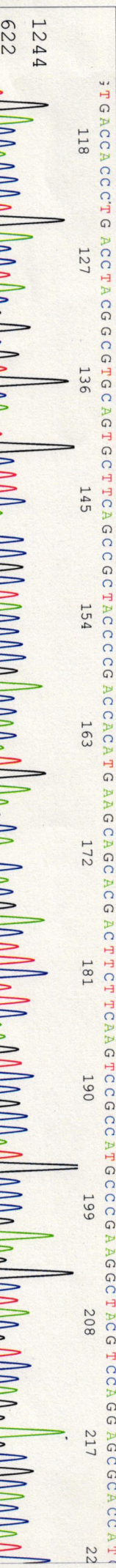
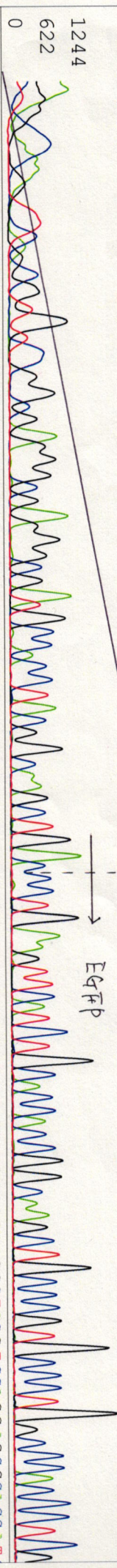
NNNNNNNNNNNNNNNNNNNNNNNNNNNNNNNNNNNNNNNNNNNNNNNNNNNNNNNNNNNNNNNNNNNNNNNNNNNNNNNNNNNNNNNNNNNNNNNNNN

NNNNNNNNNNNNNNNNNNNNNNNNNNNNNNNNNNNNNNNNNNNNNNNNNNNNNNNNNNNNNNNNNNNNNNNNNNNNNNNNNNNNNNNNNNNNNNNN



5- CCATCCTGGTCGAGCTGACG -3'

NNN NNNN N N NNNNNNN NG NNN N NNN NN G NCG AN GGGG IN GCCNCC TTA CG GCAAGCTT GAA GTTCA TCT GCA CCA CCG CAA GCTGCC CGT GCGCCCA CCCC TCC



S/N G:83 A:92 T:123 C:102

primer name **EGFP-C2**

KB 3500_POP7_BDTV3.mob

Jan 19, 2024 01:58PM, JST

KB.bcp

5'-ACTACTTGAGCACCAGCTCC-3'

Pts 1434 to 13705 PK1 Loc:1411

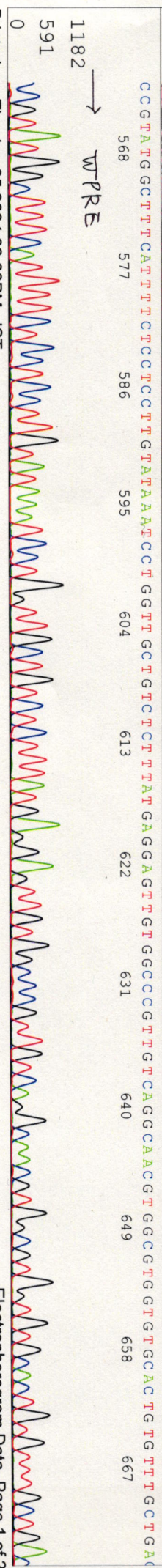
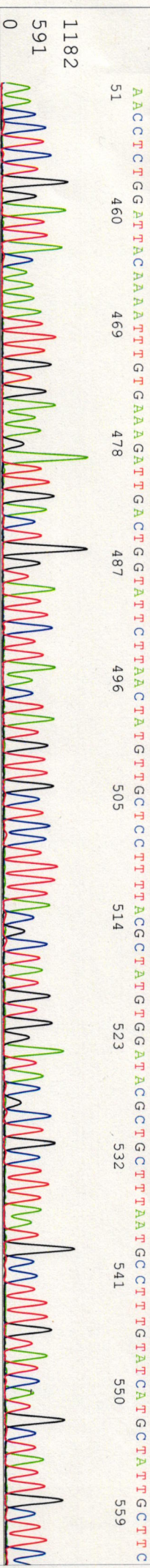
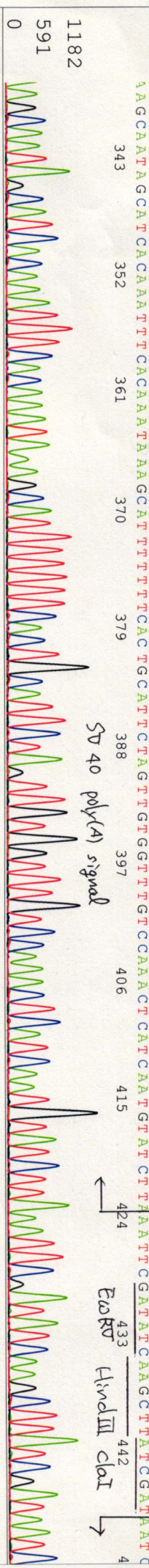
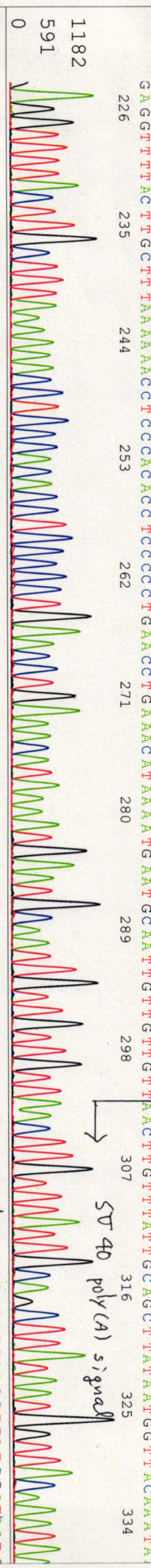
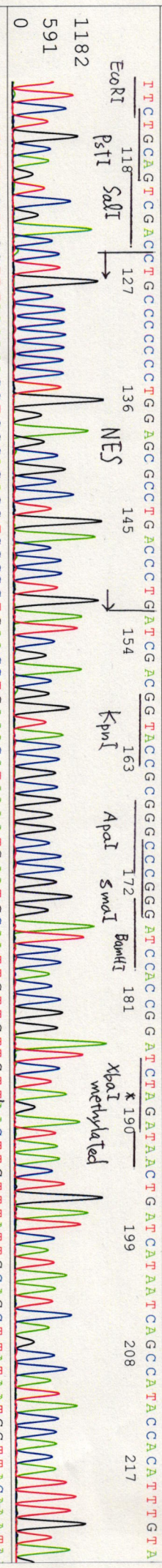
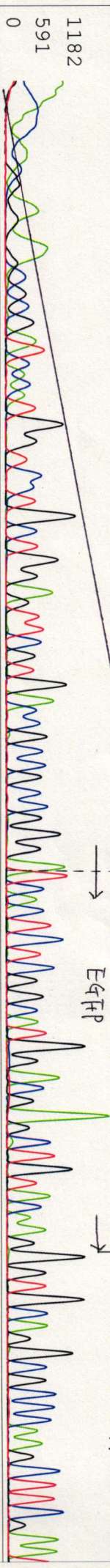
Jan 19, 2024 02:28PM, JST

KB 1.4.1.8 Cap:3

Version 6.0 HISQV Bases: 957

Spacing: 12.15 Pts/Panel1350

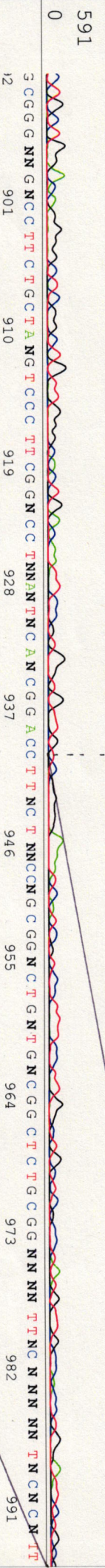
1 NNNNNNNNNN NN NNNN NN G NN CN CN T G G T C C T G C T G G A N T T C C G T G A N C G C C C G C C C G G T T C A C T C T C G G C A T G G A C G A G C T G T A C A A G G T G C A G G C C C C A A G C T T C G A A



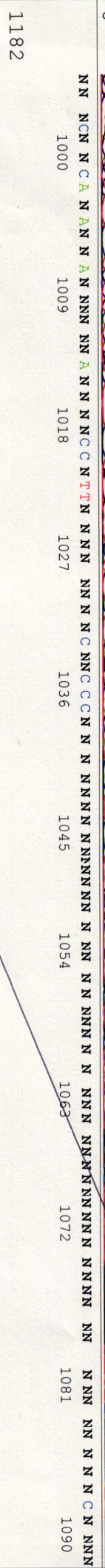
CGCAACCCCCACCTGGTTGGGGCCATTGCCACCACTGTCAAGCTCCTTCCGGGACTTTCGGCTTCCCCCTCCCTATGGCCAGCGCGGAACCTCATCGCCGCTTGCCCTGGCCG
676 685 694 703 712 721 730 739 748 757 766 775 784



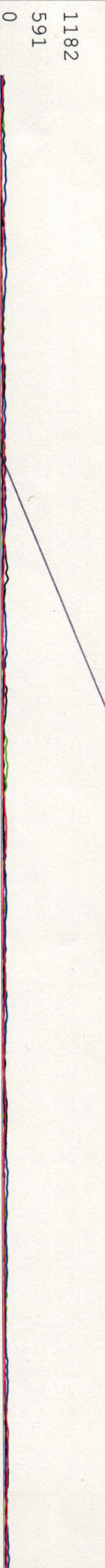
CTGCTGGACAGGGGCTCGGCTGTGGCCACTGACAATTCCGTGGTGTGNCGGGGAANTCATCCGTCTTCCCTTGNCTGCTCGCCCTATGTTGCNACCTGNATTGGC
1 793 802 811 820 829 838 847 856 865 874 883 892



3CGGGNNGCCCTTCCTGCTANGTCCCTTCGGNCCANNANNCANCGGAGCCTNC T NCCNCGCGNCTGNCTGGCTCTGGCGGNNNTTNCNNNTTNCNT
12 901 910 919 928 937 946 955 964 973 982 991



NNNCNCA NANNANNNNANNNNCCNTTNNNNNNNNCCN N NNNNNNNNNNNNNNNNNNNNNNNNNNNNNNNNNNNNNNNNNNNNNNNNNNNNNNNNNNN
1000 1009 1018 1027 1036 1045 1054 1063 1072 1081 1090



NNNNNNNNNNNNNNNNNNNNNNNNNNNNNNNNNNNNNNNNNNNNNNNNNNNNNNNNNNNNNNNNNNNNNNNNNNNNNNNNNNNNNNNNNNNNNNNNNN
1099 1108 1117 1126 1135 1144 1153 1162

NNNNNNNNNNNNNNNNNNNNNNNNNNNNNNNNNNNNNNNNNNNNNNNNNNNNNNNNNNNNNNNNNNNNNNNNNNNNNNNNNNNNNNNNNNNNNNNNNN
1171 1180

S/N G:347 A:243 T:350 C:322

primer name E : SV40_F2

18340_18340_B0Gf_1_SV40_F2

Jan 22, 2024 03:34PM, JST

KB.bcp

5' TCATCCAGCGGACCTTCC 3'

KB_3500_POP7_BDTv3.mob

Jan 22, 2024 04:05PM, JST

KB 1.4.1.8 Cap:3

Pls 1431 to 13433 Pk1 Loc:1408

Spacing:12.06 Pts/Panel1350

1 7 13 19 25 31 37 43 49 55 61 67 73 79 85 91 97 103 109
NN NNN N NNN IN IN NN NNN NN TT CC CGG TCT TCCGCTT CC GCTT CAG ACG AAG TCG GAT CTT CTT TGGGGCCGCTTCCCGCATTCGATACCGAGCCGCTGCTCCGAGAGATCTACC
XhoI EcoRI

