

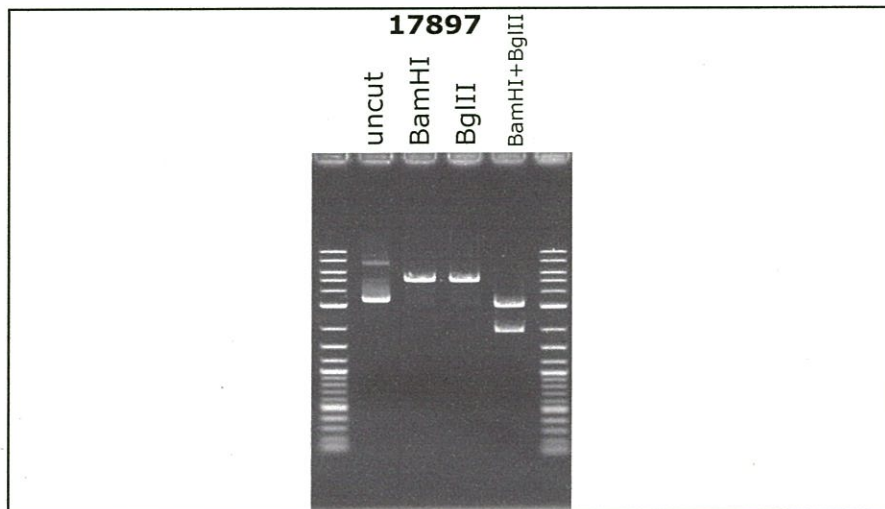
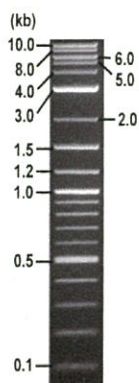


**RIKEN DNA BANK**

clone name : **spret MACS1-luc2**

- **Clone ID** : RDB\_ 17897
- **Lot** : 17897\_ B0Af
- **DNA Concentration** : 25 nanogram/microliter
- **Volume** : 40 microliter
- **Form** : DNA solution in TE buffer
- **Host** : DH5 alpha
- **Culture** : LB medium
- **Antibiotics** : 100 microgram/ml Ampicillin
- **Purification** : QIAGEN QIAprep Spin Miniprep kit
- **Digestion by restriction enzyme**

1 kb Plus DNA Ladder  
(NEB#N3200L),  
250 ng/well



Electrophoresis : 100 nanogram DNA per lane ; 1% agarose gel , 1 x TAE Buffer

Restriction enzyme	Expected size of fragment
<b>BamHI</b>	<b>5.1</b> kbp
<b>BglII</b>	<b>5.1</b> kbp
<b>BamHI+BglII</b>	<b>3.1, 2.0</b> kbp
	kbp

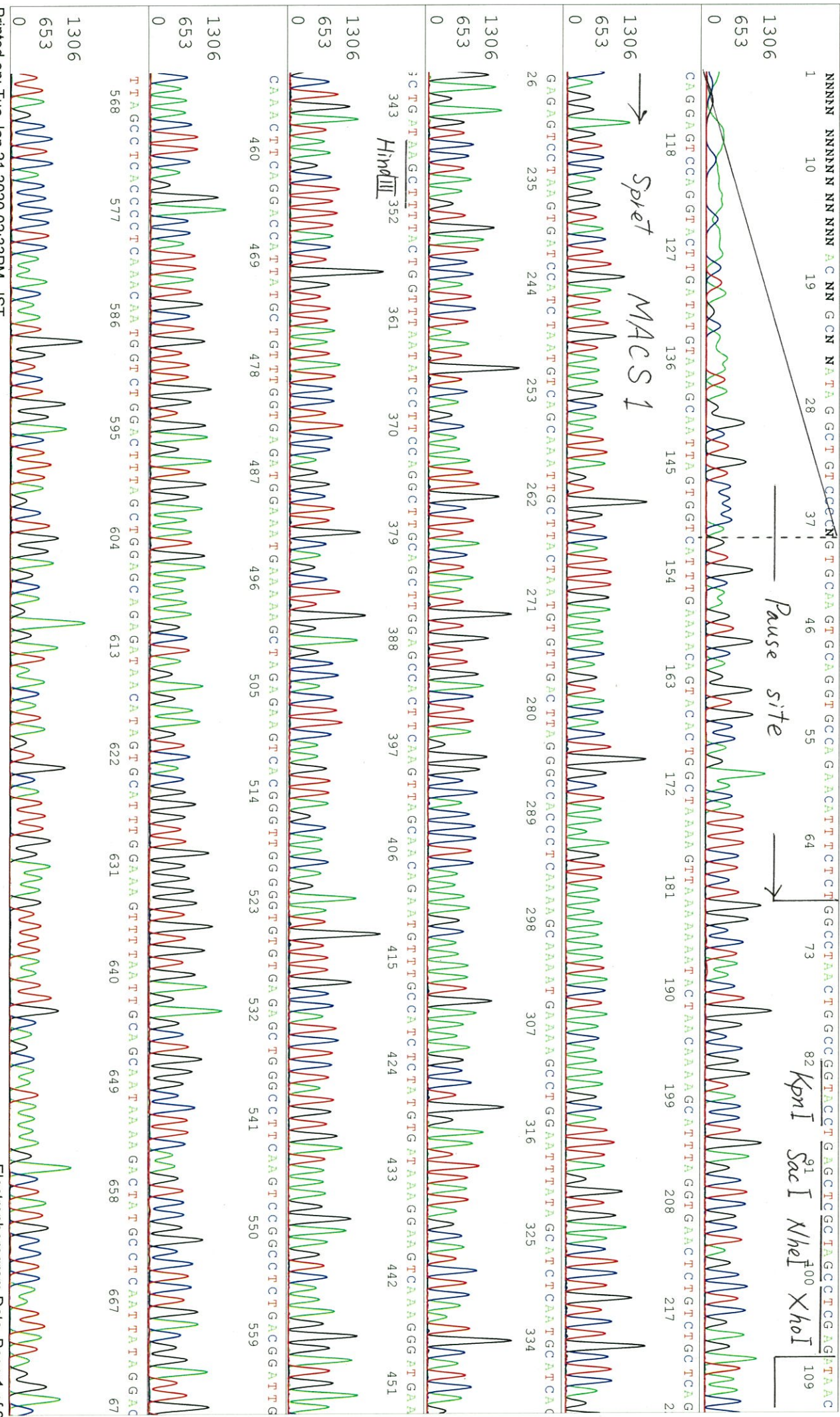
● **Confirmation of the insertion sequence**

Please be sure to check our sequence analysis results before your request.

Sequence name	Primer ID	Primer name	Confirmed feature
Sequence - A	Pr0665	pGL4ins_F	Pause site, Spret MACS1 5'
Sequence - B	Pr0146	Luc_R	luc2 5', mini P, Spret MACS1 3'
Sequence - C	Pr0664	pGL4pA_R	SV40 late p(A), luc2 3'
Sequence - D	-	-	-
Sequence - E	-	-	-
Sequence - F	-	-	-
Sequence - G	-	-	-
Sequence - H	-	-	-

APPROVED BY :

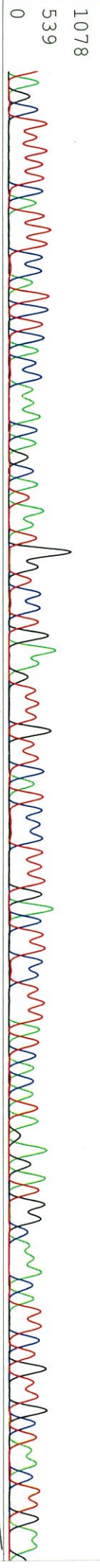






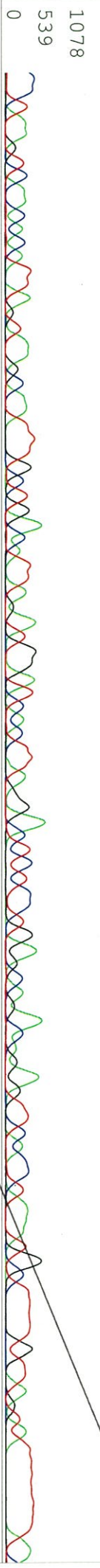


TAGCTTTTTCATTTTCCATCTCCACCAACA GCATAATGCTCCTGAAGTTTGTTCATCCCTTTGACTTCCCTTTATCACATAGAGATGGCAACATTTCTGTTGCTTAACTTGA

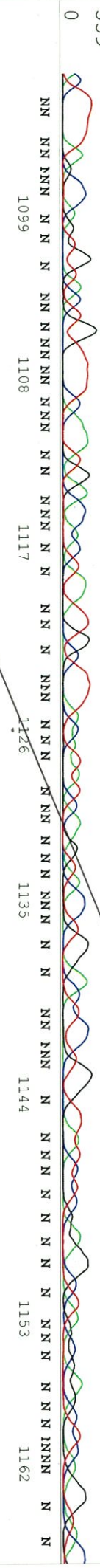


← SpreT MACS1

GTGGCTCCNAGCTGCAAGCCCTGGAANGATATTAAAC CAGTAACAA GCCTTATCA GCTGANGCATTGAGATGCTATAAATCCAGGC TTTTTCATTTTGCCTTTCANGGTGGN



CCTAANTCACAACGATTAGNAA GCAATTTGCTGANNTTANNNGNTTCACTNANGANTCTCC TGANCANANAGANTTANNCTANNNTTTGNTTANTATTTTTNN



CTTTTANCCNGNGNNNGNTTTNNNNNGANNCTNN NNGNTTNCNN



NN

SN G:205 A:171 T:213 C:272

primer name C : pGL4pa\_R

D06932A2\_BOAF\_2\_pGL4pa\_R

Jan 21, 2020 11:33AM, JST

KB.bcp

5- GGAAAGGAGCTGACTGGTTGAA -3'

KB\_3500\_POP7\_BDIv3.mob

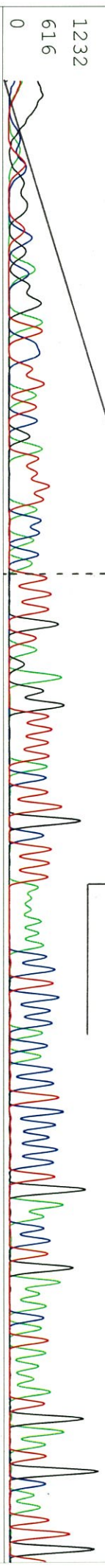
Jan 21, 2020 12:01PM, JST

KB 1.4.1.8 Cap:16

Pts 1347 to 13717 PK1 Loc:1324

Spacing:12.23 Pts/Panel1350

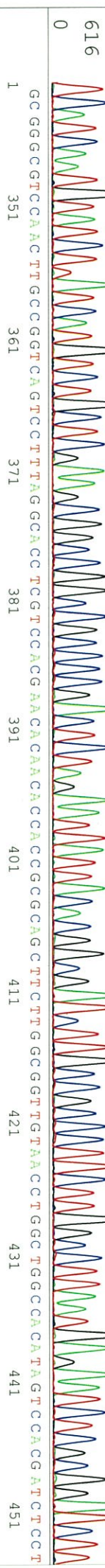
NNNNNNNN IN NNN NNN N NCN T NNT C G/N T TTNCA NNT T T GTAGA GGT TTT TAC T TG C CT T TAAAAAACCCT CCACACCTCCCCCTGAACCTGAAAACATAAAATGAATGCAATTG



SV40 late poly (A) signal

XbaI

lucZ



stop 291

