

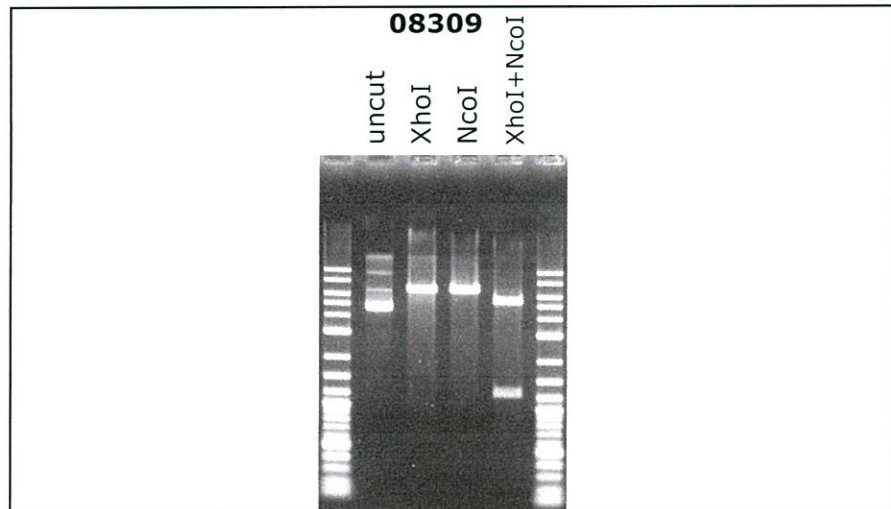
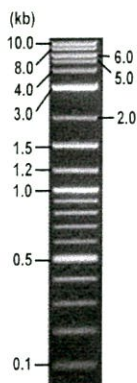


**RIKEN DNA BANK**

clone name : **pET25b\_Tr-egl2-His**

- Clone ID : RDB\_08309
- Lot : 17893\_B0A6
- DNA Concentration : 25 nanogram/microliter
- Volume : 40 microliter
- Form : DNA solution in TE buffer
- Host : DH5 alpha
- Culture : LB medium
- Antibiotics : 100 microgram/ml Ampicillin
- Purification : QIAGEN QIAprep Spin Miniprep kit
- Digestion by restriction enzyme

1 kb Plus DNA Ladder  
(NEB#N3200L),  
250 ng/well



Electrophoresis : 100 nanogram DNA per lane ; 1% agarose gel , 1 x TAE Buffer

Restriction enzyme	Expected size of fragment
<b>XhoI</b>	<b>6.7</b> kbp
<b>NcoI</b>	<b>6.7</b> kbp
<b>XhoI+NcoI</b>	<b>5.5, 1.3</b> kbp
	kbp

● Confirmation of the insertion sequence

Please be sure to check our sequence analysis results before your request.

Sequence name	Primer ID	Primer name	Confirmed feature
Sequence - A	Pr0723	pET-B_F	T7 pro, lacO, RBS, pelB signal, insert5'
Sequence - B	Pr0142	f1ori_R3	T7 ter, 6xHis, HSV tag, insert3'
Sequence - C	Pr0647	lacIpro_F2	lacI gene
Sequence - D	-	-	-
Sequence - E	-	-	-
Sequence - F	-	-	-
Sequence - G	-	-	-
Sequence - H	-	-	-

APPROVED BY :





S/N G:454 A:387 T:376 C:514

primer name A : PET-B\_F

08309\_17893\_BOA6\_1\_pET-B\_F

Jan 10, 2020 03:46PM, JST

KB bcp

5' TCGGTGATGTCCGGCATATAT3'

KB\_3500\_POP7\_BDTV3.mob

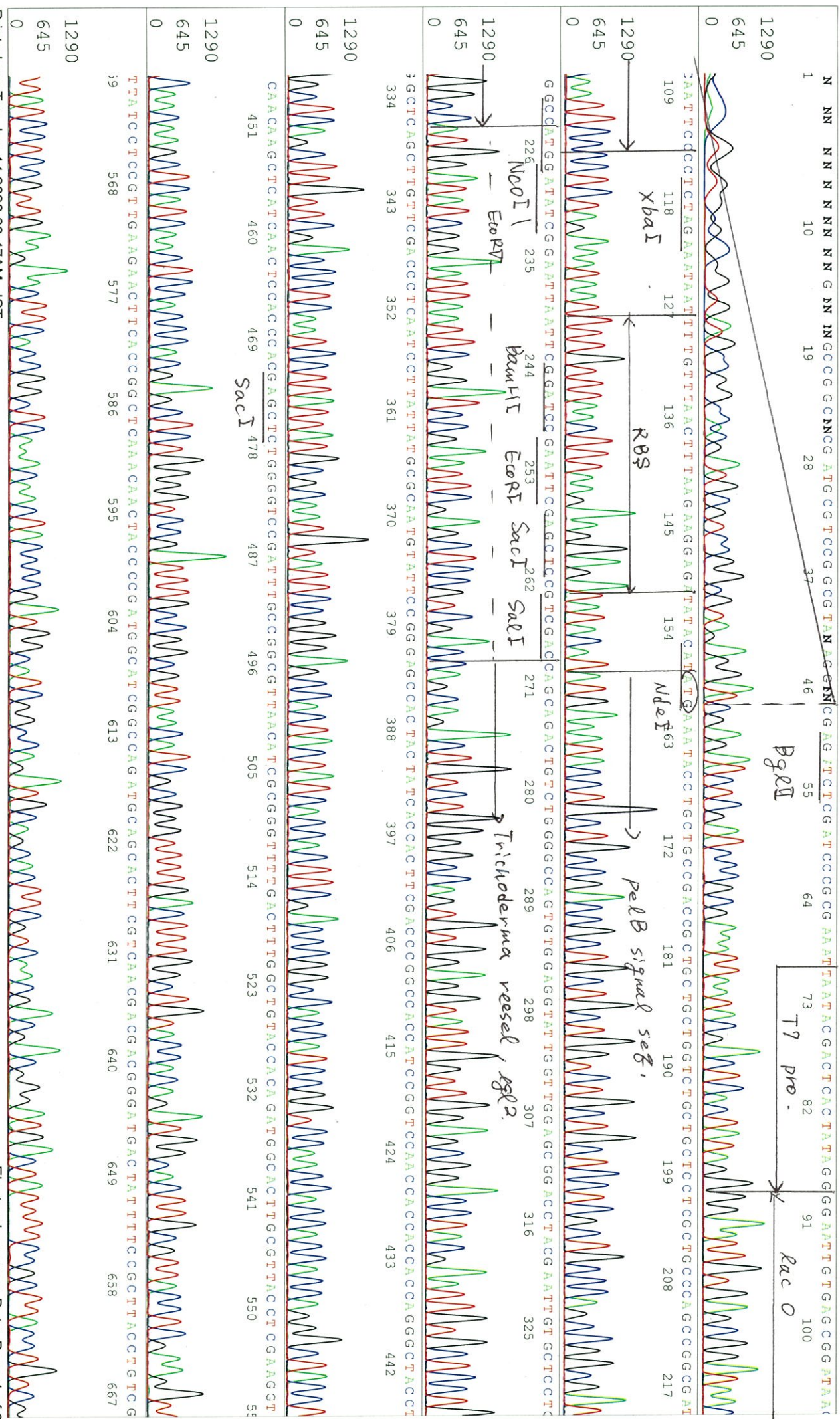
Jan 10, 2020 04:25PM, JST

KB 1.4.1.8 Cap:1

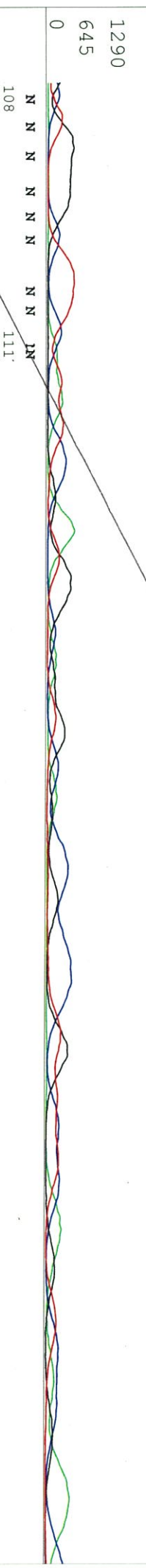
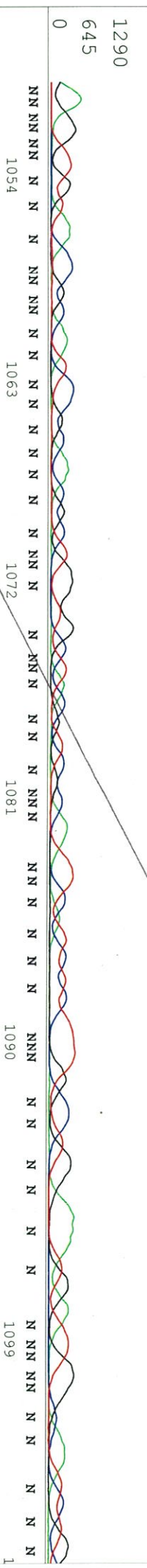
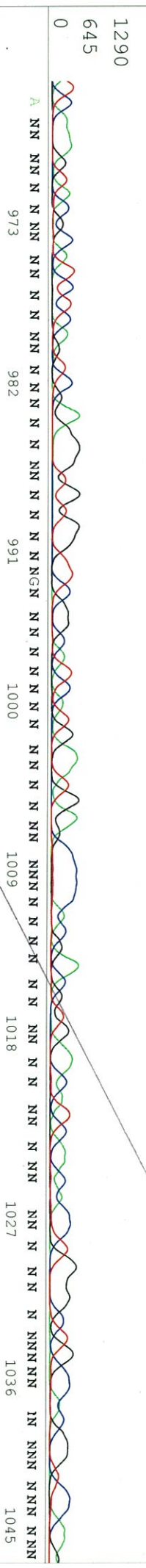
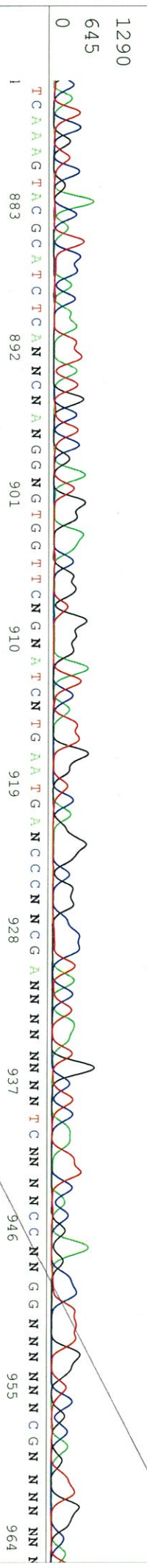
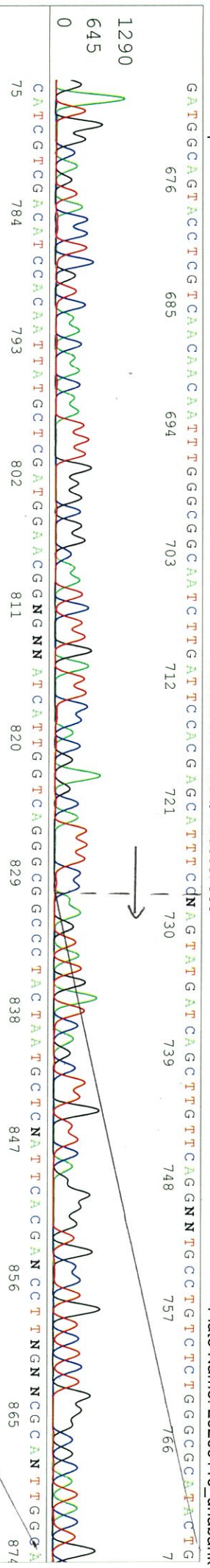
Pts 1532 to 12839 Pk1 Loc:1509

Version 6.0 HISQV Bases: 903

Spacing: 11.4 Pts/Panel 350  
Plate Name: 20200110\_dhbank









S/N G:247 A:196 T:191 C:252

primer name B :f1ori\_R3

08309\_17893\_BOA6\_1\_f1ori\_R3

Jan 10,2020 03:46PM, JST

KB.bcp

5'TTAATGCCCGCTACAGGGC3'

KB\_3500\_POP7\_BD1V3.mob

Jan 10,2020 04:25PM, JST

KB 1.4.1.8 Cap:4

Pls 1491 to 12735 Pk1 Loc:1468

Version 6.0 HiSQV Bases: 892

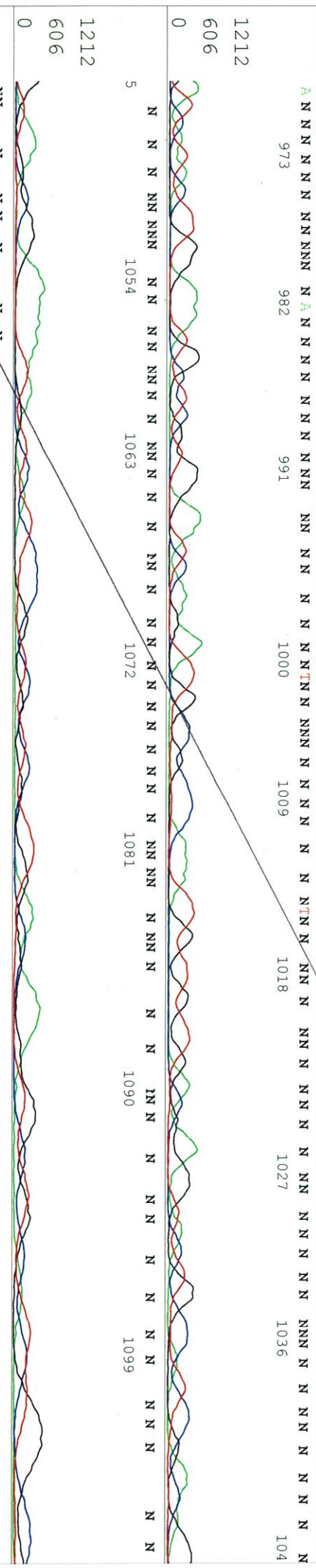
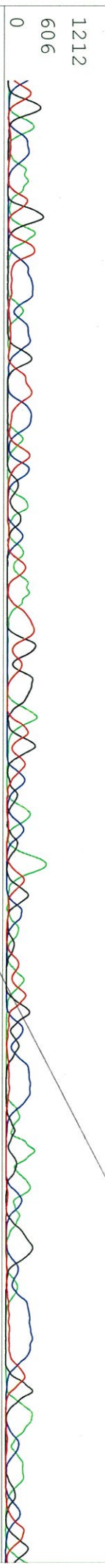
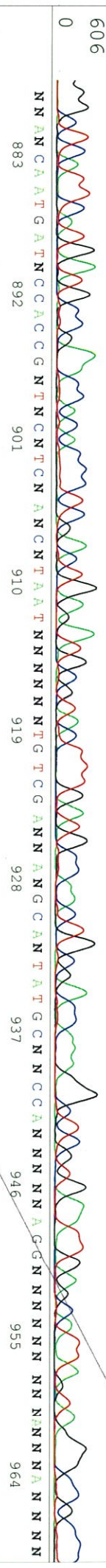
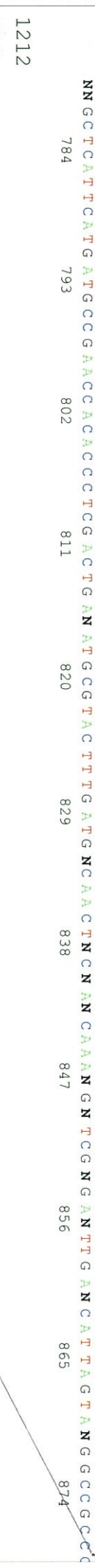
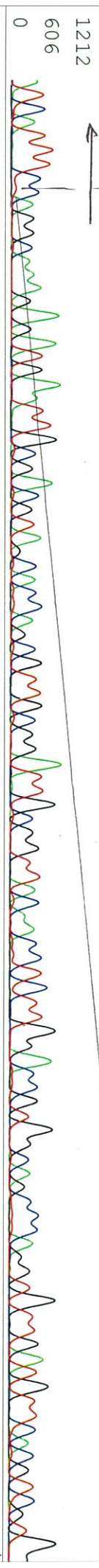
Spacing:11.29 Pls/Panel1350  
Plate Name: 20200110\_dhbank

1 NNNNN NIN NN NIN NNNNN NN N NCCCT TTTNNG CNNAAAACCCCT CNL GANNCCG TTTAGAGGCCCAAGGGGTTATGCTAGTTATTTGCTCAGCGGTGGCAGCAGCCAACCTCAGC





ATCATTTTc|NA GGC<sup>676</sup>CAAA<sup>685</sup>GAG<sup>694</sup>ATGAAT<sup>703</sup>TGGCAG<sup>712</sup>CGAC<sup>721</sup>CGTAG<sup>730</sup>CCAG<sup>739</sup>CGCG<sup>748</sup>GTG<sup>757</sup>CGAT<sup>766</sup>TG<sup>775</sup>CGAT<sup>784</sup>TTCAT<sup>793</sup>GCAG<sup>802</sup>CCAC<sup>811</sup>CCCT<sup>820</sup>CGACT<sup>829</sup>GAN<sup>838</sup>ATGCG<sup>847</sup>TACT<sup>856</sup>TGAT<sup>865</sup>GCAT<sup>874</sup>TGAT<sup>883</sup>ATG<sup>892</sup>CCAC<sup>901</sup>CCG<sup>910</sup>NT<sup>919</sup>TCN<sup>928</sup>AN<sup>937</sup>CNT<sup>946</sup>AT<sup>955</sup>NT<sup>964</sup>ANN<sup>973</sup>CC<sup>982</sup>CC<sup>991</sup>CC<sup>1000</sup>CC<sup>1009</sup>CC<sup>1018</sup>CC<sup>1027</sup>CC<sup>1036</sup>CC<sup>1045</sup>CC<sup>1054</sup>CC<sup>1063</sup>CC<sup>1072</sup>CC<sup>1081</sup>CC<sup>1090</sup>CC<sup>1099</sup>CC<sup>1108</sup>CC



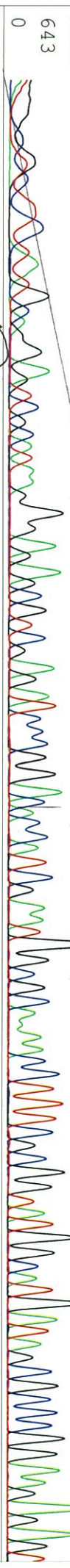


S/N G:265 A:194 T:192 C:314 primer name *lacpro\_F2* : *lacpro\_F2* KB\_3500\_POP7\_BDTV3.mob Jan 10,2020 03:46PM, JST

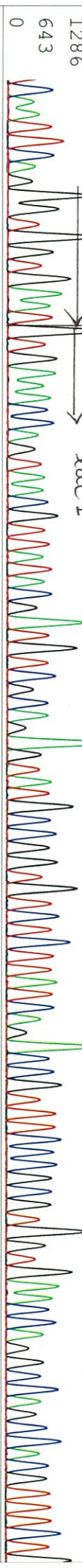
KB bcp 5' CGGGGTTGCTCAACGGCCTC3' Pts 1490 to 12733 Pk1 Loc:1467 Spacing:11.35 Pts/Panel1350

KB 1.4.1.8 Cap:7 Version 6.0 HISQV Bases: 909 Plate Name: 20200110\_dnabank

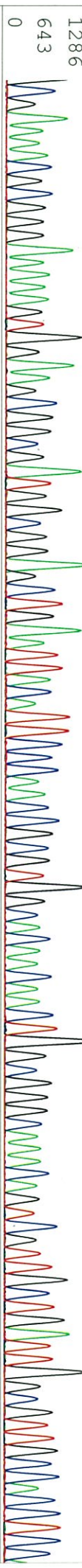
1 10 19 28 37 46 55 64 73 82 91 100 109



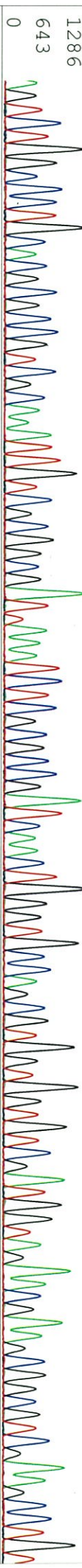
FC AAT T CA GGG T GGT GAA T GT G AAACCA G T AAC G T T A T A C G A T G T C C G A G A G T A T G C C G G T G T C T C T T A T C A G A C C G T T T C C C C G T G G T G A A C C A G G C C A G C C A C G T T C T



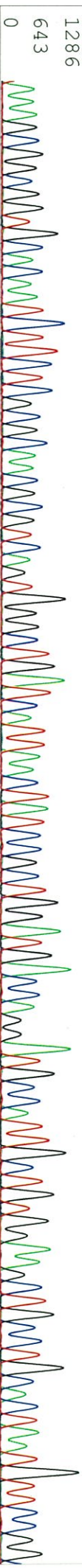
3CGAAAA CGCGGG AAAAAG TGG AAG CGCGG ATG GCGGAGC TGAAT TACAT TCCCAA CCGCGGTG GCACAA CAAC TGGCGGG CAAACA GTCTGCTGATTGGCGGTGCCACTCC



AGTCTGGCCCTGCA CGCGCCG TCGCAAA TGT CCGCG GCGAT TAAAT C TCGCGCCGATCAAC TGGGTGCCA GCGGTGGTGTGGATTG TAGAACGAAGCGCGCTCGAA GCCCTGT



IAAAGCGCGGTGCCACAATCTTCTCGCCAACCGGTCAGTGGGCTGATCATTTAACTATCCGCTGGATGAC CAGGATGCCAT TGGCTGTGGAAGCTGCC TGCCTAA TGTTCGG



CGTTATTTCTTGATGCTCTCTGACCAAGACACC CATCAACAGTATTATTTCTCTCCCA TGAAGA CCGTACGCGACTGGCGGTGGAGCATCTGGTCCGAT TGGGT CACCAGCA





