



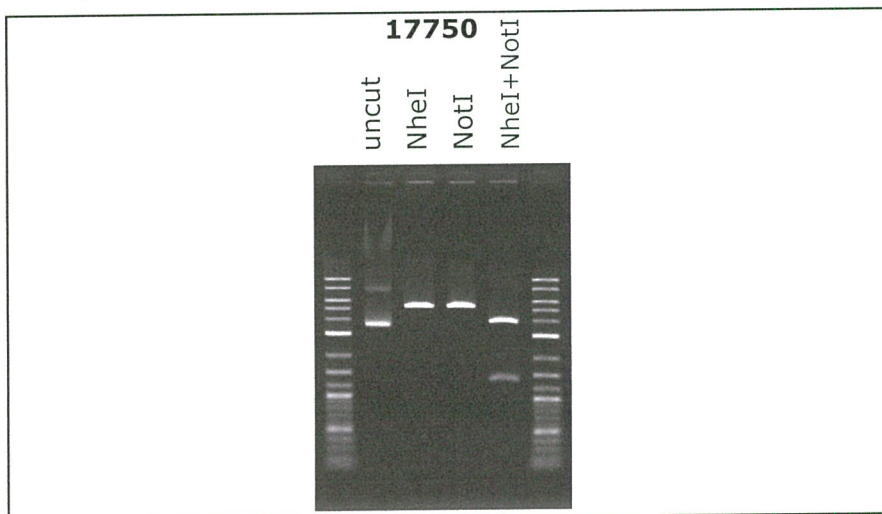
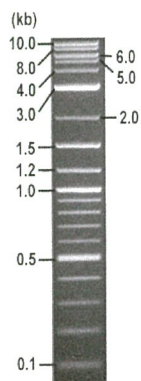
RIKEN DNA BANK

clone name : pN1-TOMM20-Halo

- Clone ID : RDB_ 17750
- Lot : 17750_ A9L3
- DNA Concentration : 25 nanogram/microliter
- Volume : 40 microliter
- Form : DNA solution in TE buffer
- Host : DH5 alpha
- Culture : LB medium
- Antibiotics : 25 microgram/ml Kanamycin
- Purification : QIAGEN QIAprep Spin Miniprep kit

● Digestion by restriction enzyme

1 kb Plus DNA Ladder
(NEB#N3200L),
250 ng/well



Electrophoresis : 100 nanogram DNA per lane ; 1% agarose gel , 1 x TAE Buffer

Restriction enzyme	Expected size of fragment
NheI	5.3 kbp
NotI	5.3 kbp
NheI+NotI	3.9, 1.4 kbp
	kbp

● Confirmation of the insertion sequence

Please be sure to check our sequence analysis results before your request.

Sequence name	Primer ID	Primer name	Confirmed feature
Sequence - A	Pr0016	CMV_Forward	CMV pro,insert 5'(TOMM20,Halo tag 5')
Sequence - B	Pr0059	pAxEF R2	SV40 pA,insert 3'(Halo tag 3')
Sequence - C	Pr0731	SV40pro_ori_F	SV40 pro_ori, NeoR_KanR
Sequence - D	-	-	-
Sequence - E	-	-	-
Sequence - F	-	-	-
Sequence - G	-	-	-
Sequence - H	-	-	-

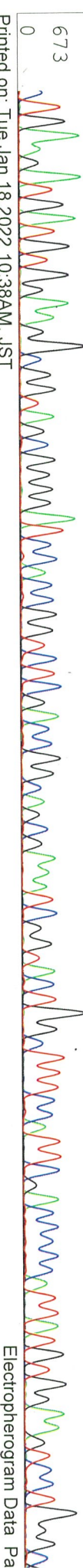
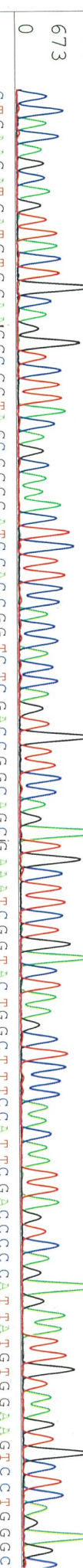
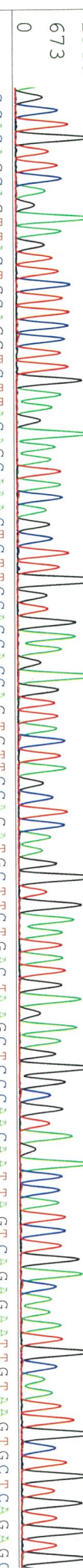
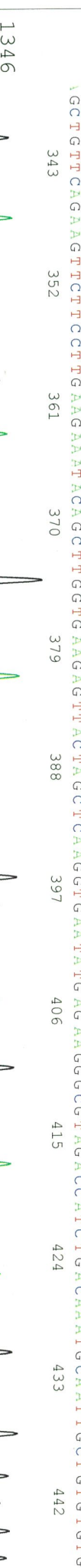
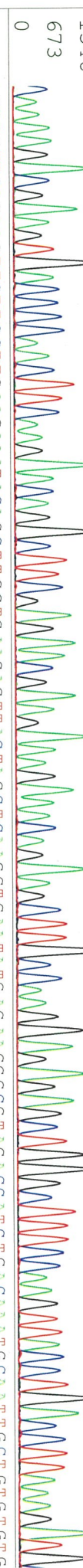
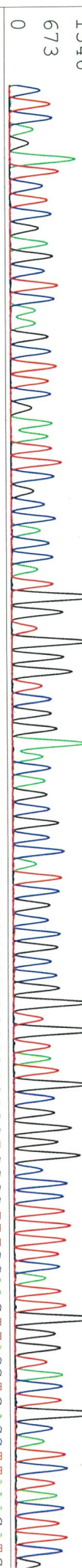
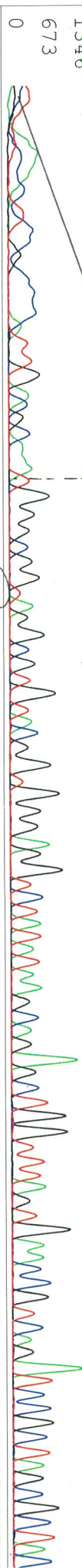
APPROVED BY :



S/N G:66 A:60 T:42 C:49 primer name A : CMV_Forward
KB.bcp KB_3500_POP7_BDTV3.mob
KB 1.4.1.8 Cap:12 5'-GCACCAAATCAACGGGACTT-3'
Pis 1567 to 13062 PK1 Loc: 1544
Version 6.0 HISQV Bases: 894

KB_3500_POP7_BDTV3.mob
Pis 1567 to 13062 PK1 Loc: 1544
Version 6.0 HISQV Bases: 894

Inst Model/Name 3500/3500 Ihs
Jan 14, 2022 02:31P
Jan 14, 2022 02:58P
Spacing: 11.49 Pts/Par
Plate Name: 2022201



SN: G:234 A:194 T:136 C:179
KB: bcp
KB 1.4.1.8 Cap: 15

primer name β : pAXEF R2
5'GATGAGTTTGGACAAACACAC 3'

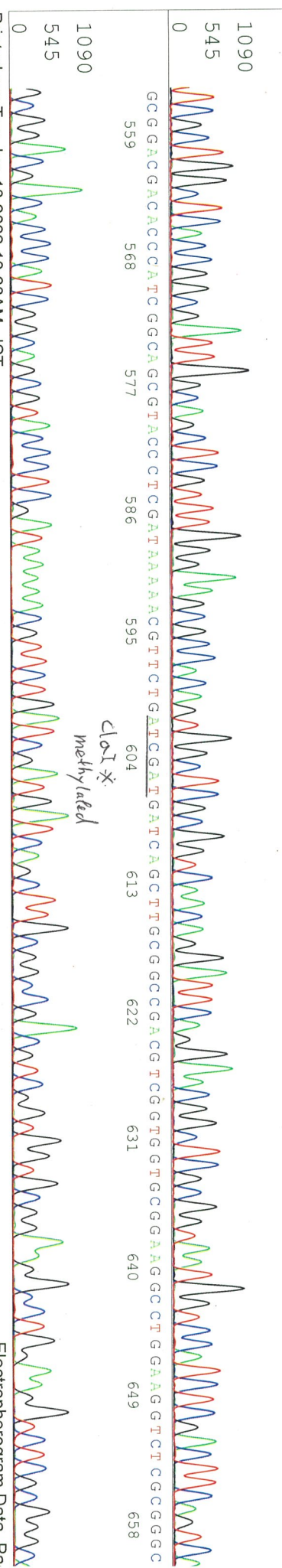
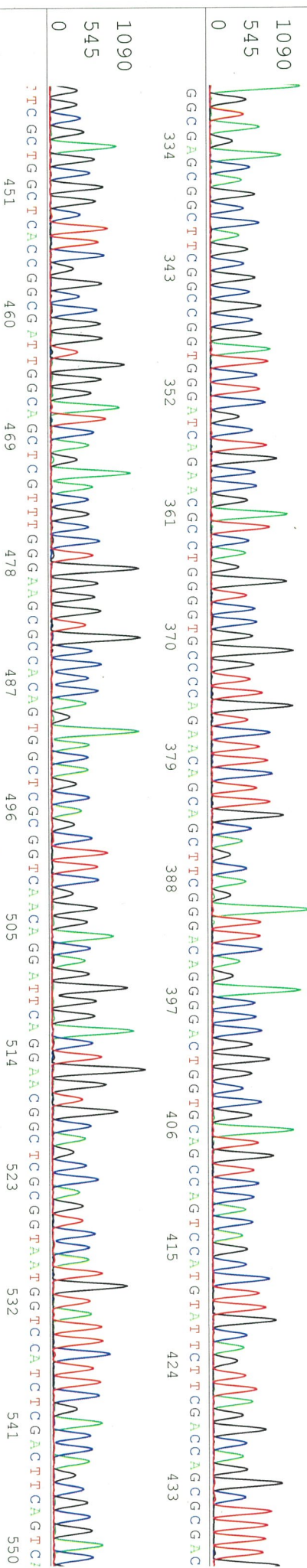
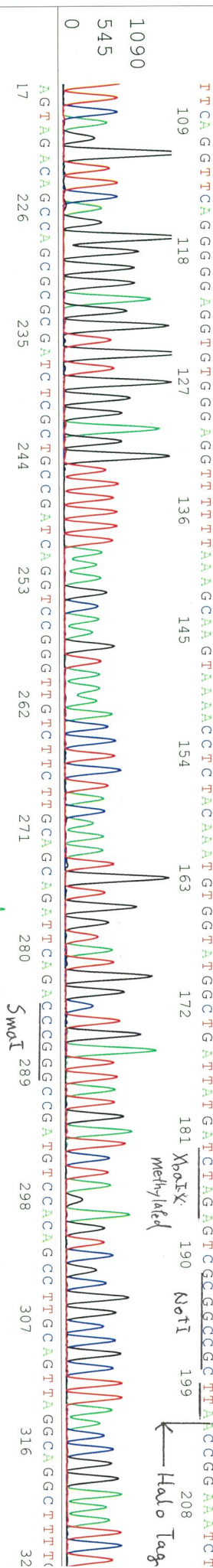
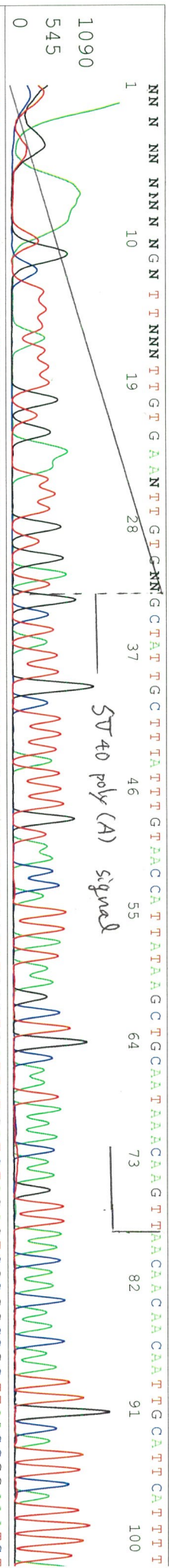
D06362C2_A9L3_3_pAXEF R2
KB: 3500_POP7_BDTV3.mob
Pis 1534 to 13152 PK1 Loc: 1511
Version 6.0 HISQV Bases: 894

Jan 14, 2022 02:31P
Jan 14, 2022 02:58P
Spacing: 11.66 Pts/Par
Plate Name: 202201

ST 40 poly (A) signal

XhoI *
MethyIated

Halo Tag



CTGGCCATTTCGTCCCAAGTCCGGGATAGGGGGATGAACTCCATAAATGCAATACCCTTGAAGCCGCTCTGATTTGGCGCTTGGCCCAAGTGAANCCCAAGANCGC
667 676 685 694 703 712 721 730 739 748 757 766

CCAGTCCGTGAAATGACCCAGGACGACCTCTCCAGANCCANGGCTTCNATGGAANNNTCCATGAAACGANGTGCTCGNCCNANAAATAACCCANGTC
775 784 793 802 811 820 829 838 847 856 865

H2O Tag (R)



TNGNCGNATTTNCGCCCNATACCGATCCANGNCTNGANCNANGCAGATNGGNCCGNNNNNCNTGCCNGGNNGNTGTNNNNNNNNNNNNNN
874 883 892 901 910 919 928 937 946 955

NNNNNGGTTNN
964 973 982 991 1000 1009 1018 1027 1036

NN
1045 1054 1063 1072 1081 1090 1099

NN
1108



S/N G:102 A:67 T:60 C:63 primer name : SV40pro_ori_F
KB bcp 5'- TTCTCCGCCCCATGGCTGACTAAT -3'
KB 1.4.1.8 Cap:18

D06362C2_A9L3_3_SV40pro_ori_F
KB 3500_POP7_BDTV3.mob
Pis 1595 to 13038 PK1 Loc:1572
Version 6.0 HISQV Bases: 911

Jan 14,2022 02:31P
Jan 14,2022 02:58P
Spacing:11.56 Pts/Pair
Plate Name: 2022201

