

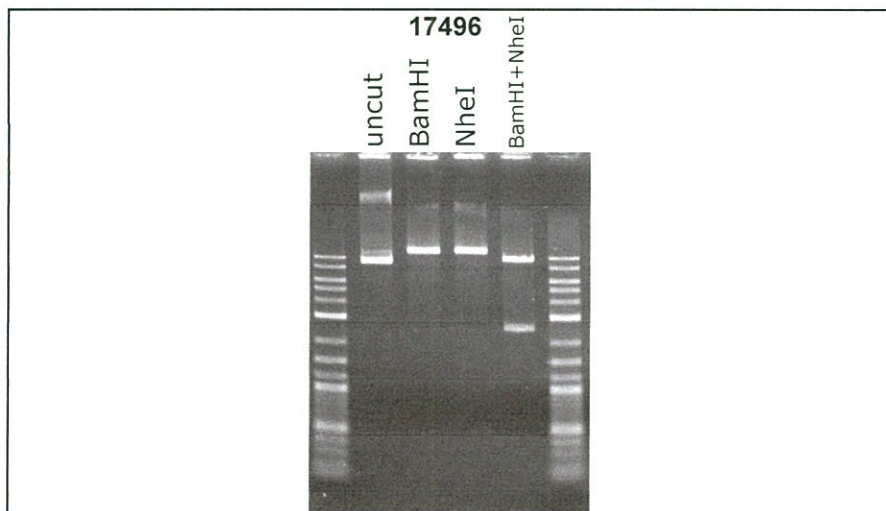
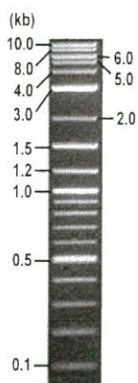


**RIKEN DNA BANK**

clone name : CSII FLAG-hRFWD3 wt

- Clone ID : RDB\_17496
- Lot : 17496\_A9lo
- DNA Concentration : 25 nanogram/microliter
- Volume : 40 microliter
- Form : DNA solution in TE buffer
- Host : NEB stable
- Culture : LB medium
- Antibiotics : 100 microgram/ml Ampicillin
- Purification : QIAGEN QIAprep Spin Miniprep kit
- Digestion by restriction enzyme

1 kb Plus DNA Ladder  
(NEB#N3200L),  
250 ng/well



Electrophoresis : 100 nanogram DNA per lane ; 1% agarose gel , 1 x TAE Buffer

Restriction enzyme	Expected size of fragment
<b>BamHI</b>	<b>12.1</b> kbp
<b>NheI</b>	<b>12.1</b> kbp
<b>BamHI+NheI</b>	<b>9.5, 2.5</b> kbp
	kbp

● Confirmation of the insertion sequence

Please be sure to check our sequence analysis results before your request.

Sequence name	Primer ID	Primer name	Confirmed feature
Sequence - A	Pr0757	hRFWD3-N_R	insert 5', attB1, FLAG, CMV pro 2, CMV en 2
Sequence - B	Pr0573	IRES_R3	attB2, insert 3'
Sequence - C	Pr0753	hRFWD3-N_F	insert mid
Sequence - D	Pr0132	HIVgp_R1	HIV-1 psi, 5' LTR
Sequence - E	Pr0303	cPPT+CTS_v2_F	cPPT_CTS, CMV en 2, CMV pro 2
Sequence - F	Pr0036	IRES-F	IRES2, BSD, WPRE
Sequence - G	Pr0606	BGH_rev2	bGH p(A), 3' LTR, WPRE
Sequence - H	Pr0731	SV40pro_ori_F	SV40 pro_ori, EM7 pro, BleoR

APPROVED BY :









S/N G:44 A:47 T:44 C:57

D06551A7\_A91o\_2\_hRFWD3-N\_R

Oct 23, 2019 02:02PM, JST

KB.bcp

KB\_3500\_POP7\_BDTV3.mob

Oct 23, 2019 02:28PM, JST

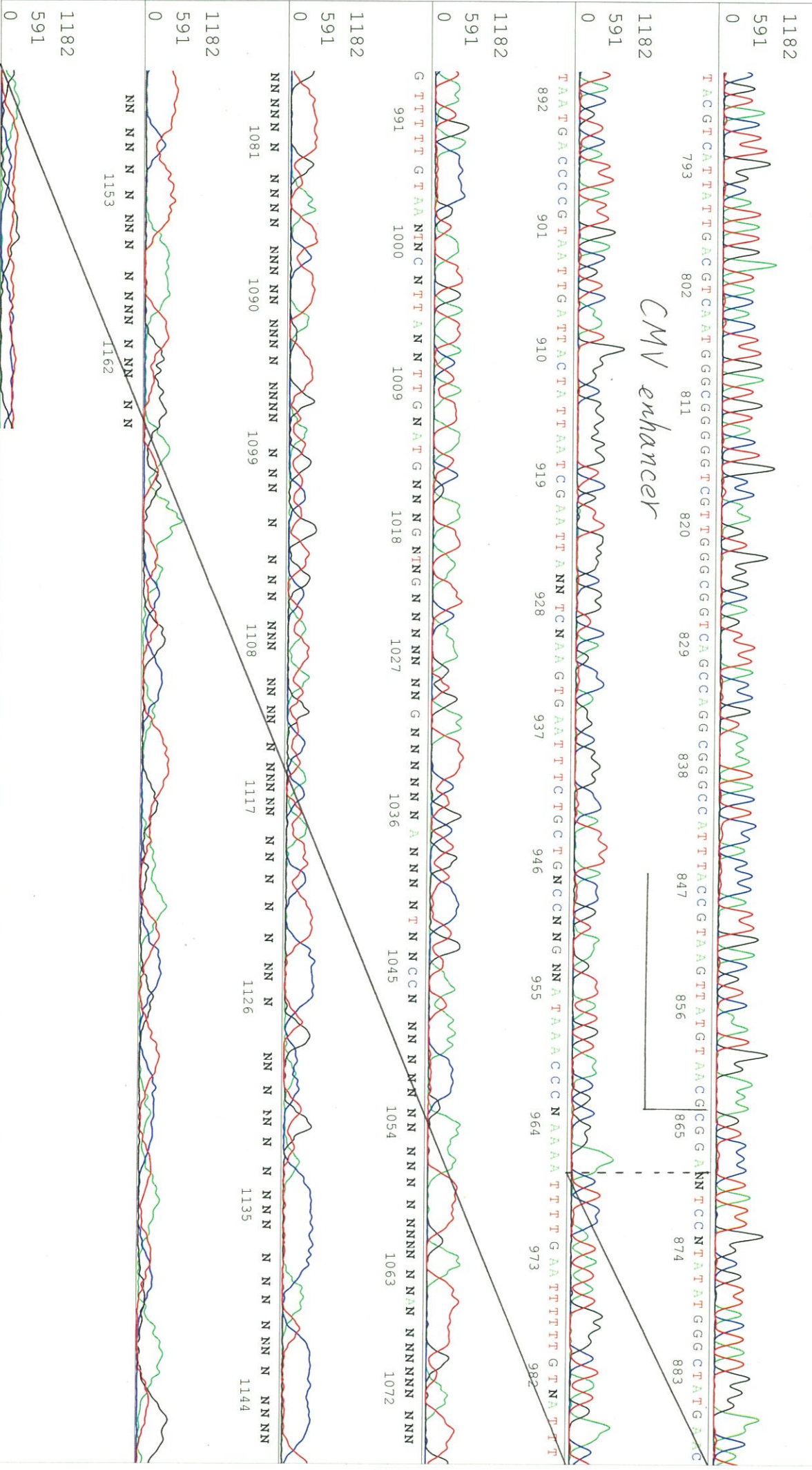
KB 1.4.1.8 Cap:20

Pls 1373 to 13027 PK1 Loc:1350

Spacing: 11.72 Pls/Panel1350

C G T A C T T G G C A T A T G A T A C A C T T G A T G T A C T G C C A A G T G G G C A G T T T A C C G T A A A T A C C C A T T G A C G T C A A T G G A A A G T C C C T A T T G G C G T T A C T A T G G A A C A

CMV enhancer





S/N G:25 A:16 T:18 C:19

primer name *B* : IRES\_R3

D06551A7\_A91o\_2\_IRES\_R3

Oct 10, 2019 01:52PM, JST

KB.bcp

KB 1.4.1.8

Cap.4

KB\_3500\_POP7\_BDTV3.mob

Oct 10, 2019 02:33PM, JST

5- ACACCCGGCCTTATTCCCAAG -3'

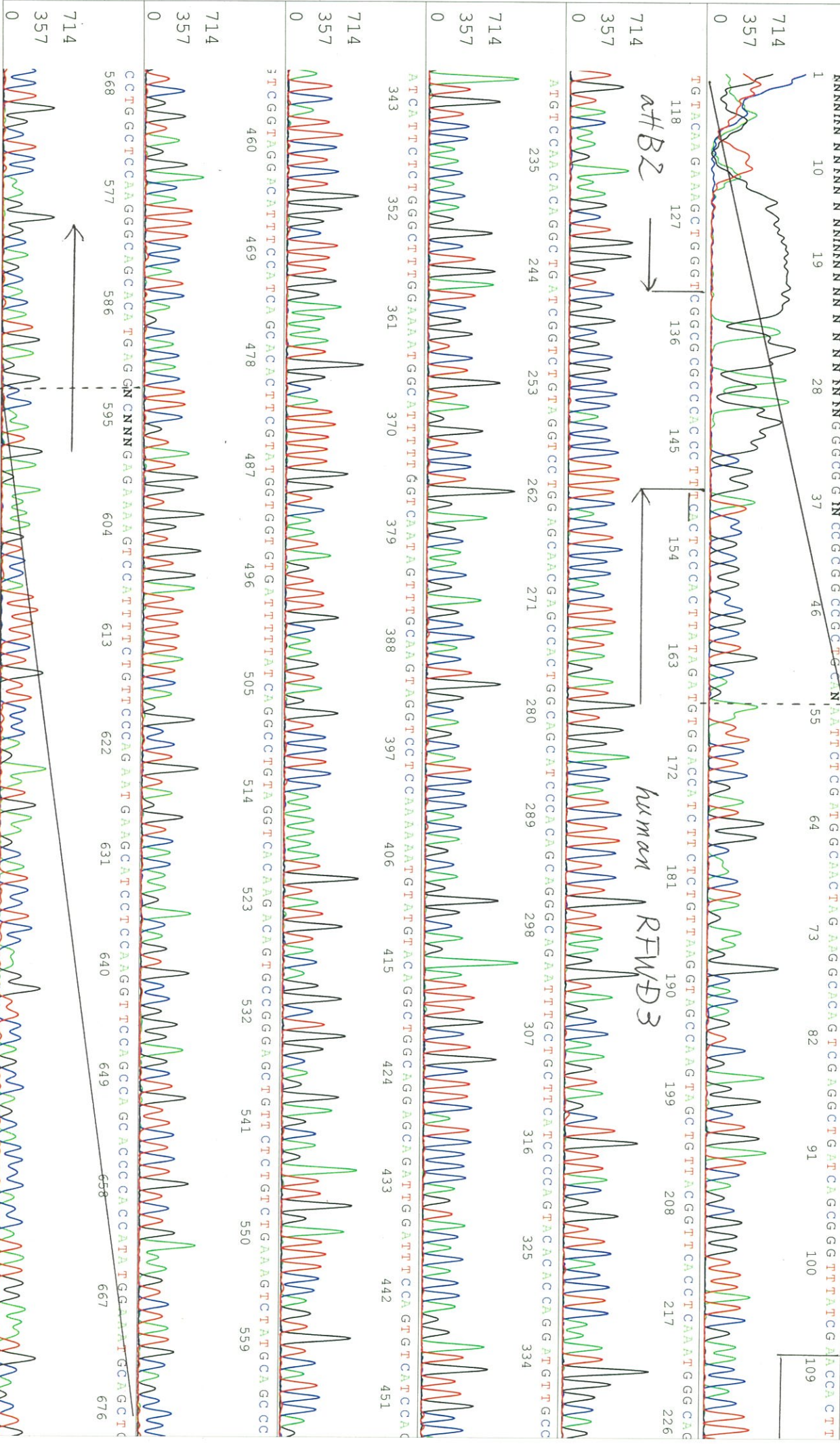
Pts 1400 to 12654 Pk1 Loc:1377

Spacing: 11.29 Pts/Panel1350

Version 6.0

HISQV Bases: 958

Plate Name: 20191010 mix





S/N G:120 A:138 T:11 primer name C : hRFWD3-N\_F

D06551A7\_A91o\_2\_hRFWD3-N\_F

KB\_bcp KB\_3500\_POP7\_BDTV3.mob

Pts 1394 to 13222 Pk1 Loc:1371

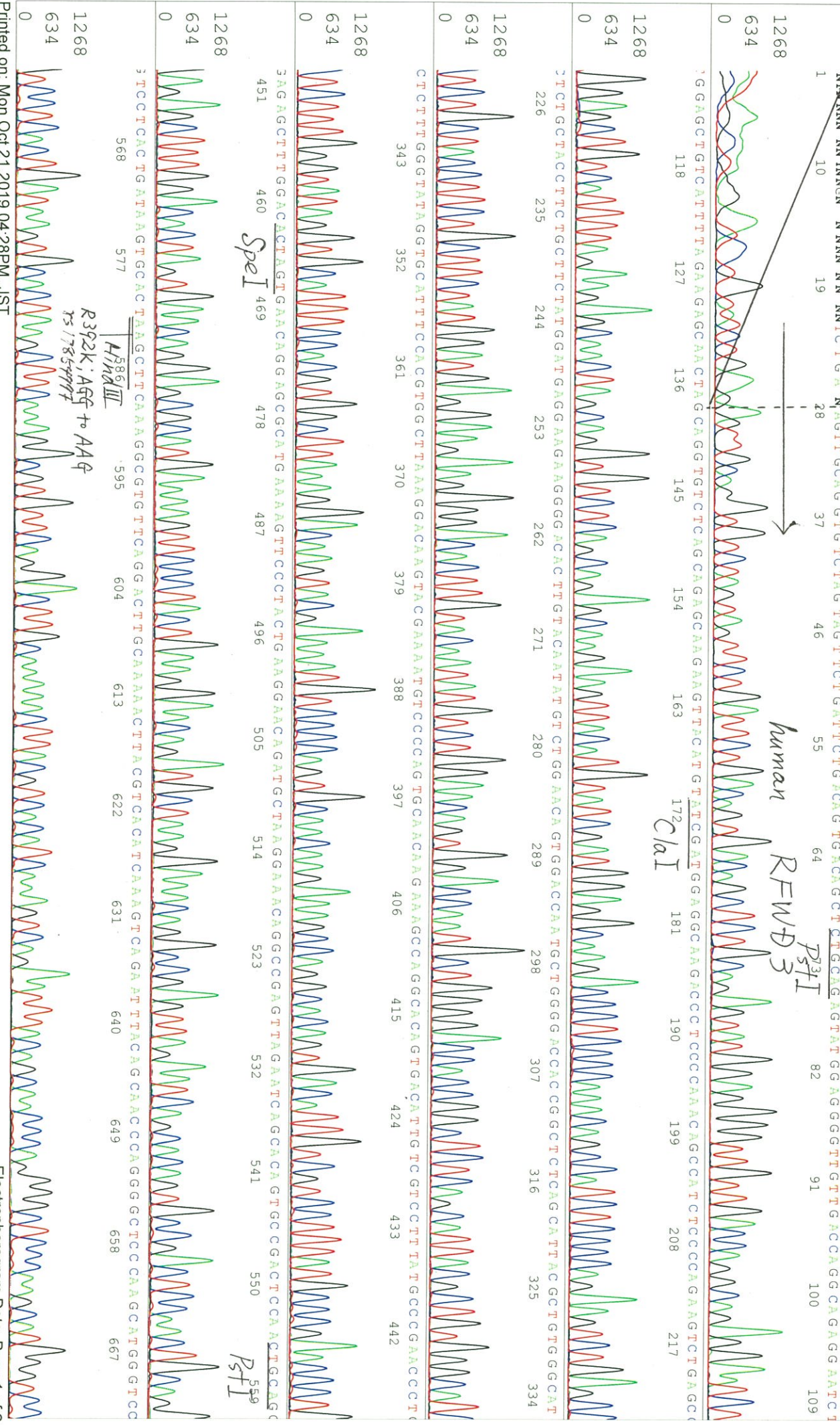
Version 6.0 HiSQV Bases: 962

Oct 21, 2019 02:01PM, JST  
Oct 21, 2019 02:39PM, JST  
Spacing: 11.75 Pts/Panel1350  
Plate Name: 20191021\_kitaku

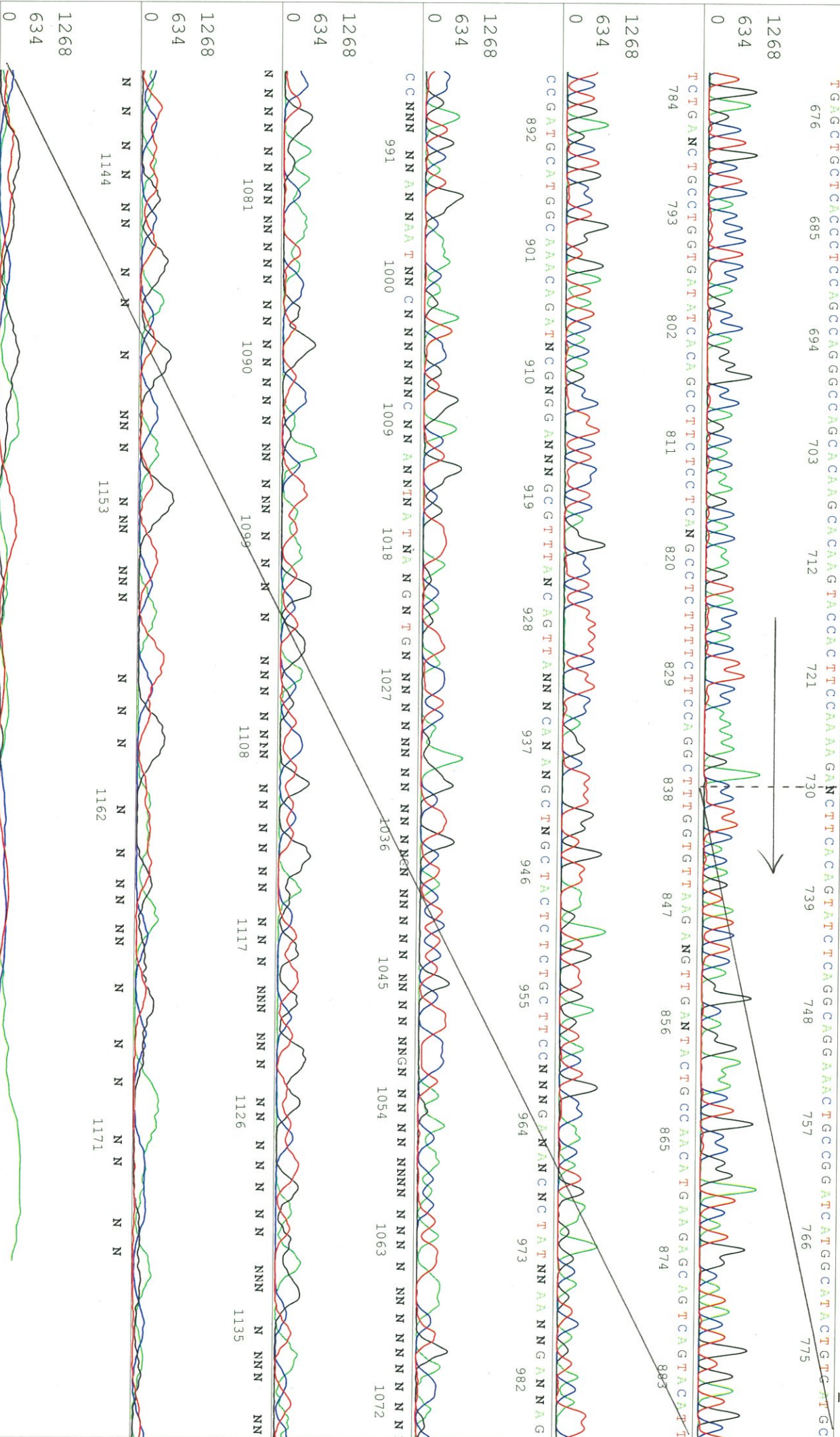
KB 1.4.1.8 Cap:7 5'-CAGCGCTGACTTGCCAGCTAC-3'

human RFW3

Clal





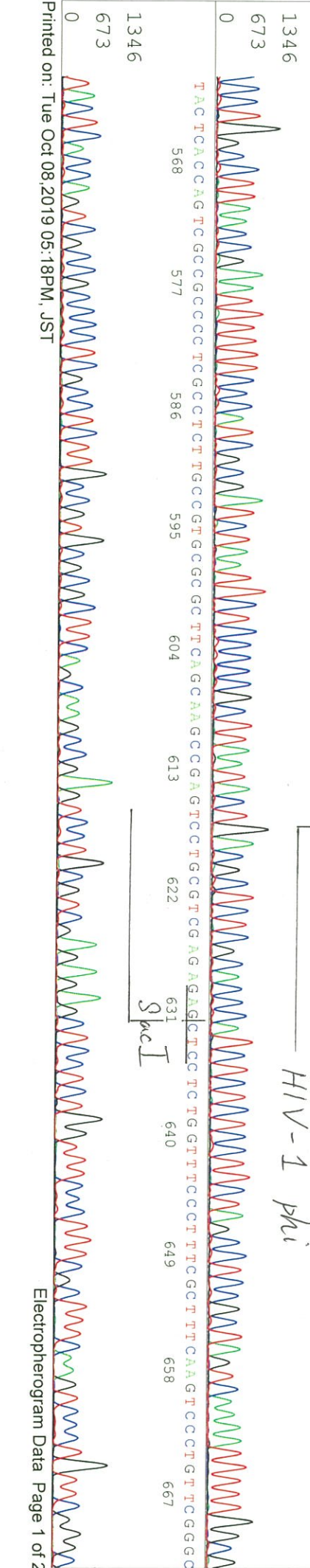
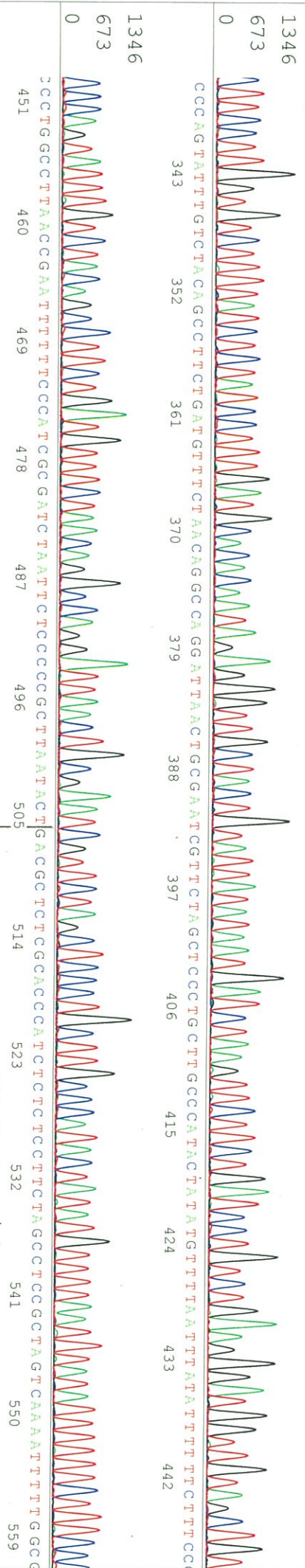
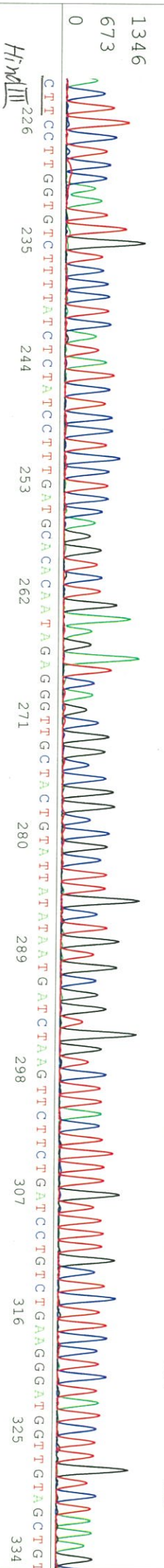
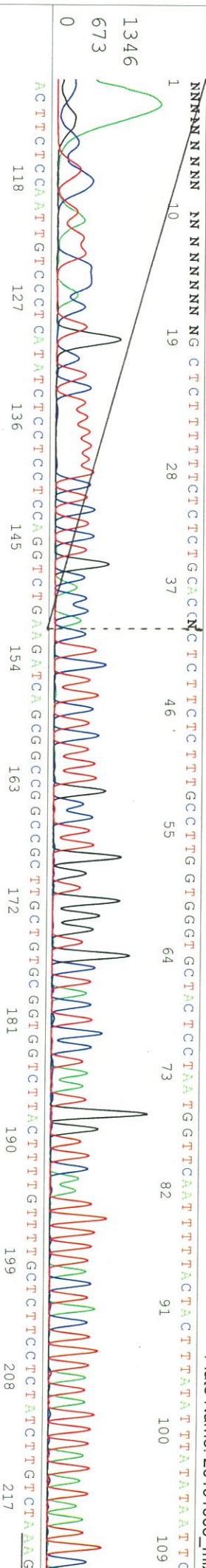




SN G:167 A:173 T:225 C:3( primer name  $\Phi$  : HIVgp\_F1  
KB.bcp 5- ATCTAGCTTGCAGGATTCCG -3'  
KB 1.4.1.8 Cap:7

D06551A7\_A91o\_2\_HIVgp\_R1  
KB\_3500\_POP7\_BDTV3.mob  
Pis 1357 to 13566 Pk1 Loc:1334  
Version 6.0 HISQV Bases: 968

Oct 08, 2019 01:45PM, JST  
Oct 08, 2019 02:14PM, JST  
Spacing: 12.1 Pss/Panel1350  
Plate Name: 20191008\_mix





S/N G:167 A:173 T:225 C:305

D06551A7\_A91o\_2\_HIVgp\_R1

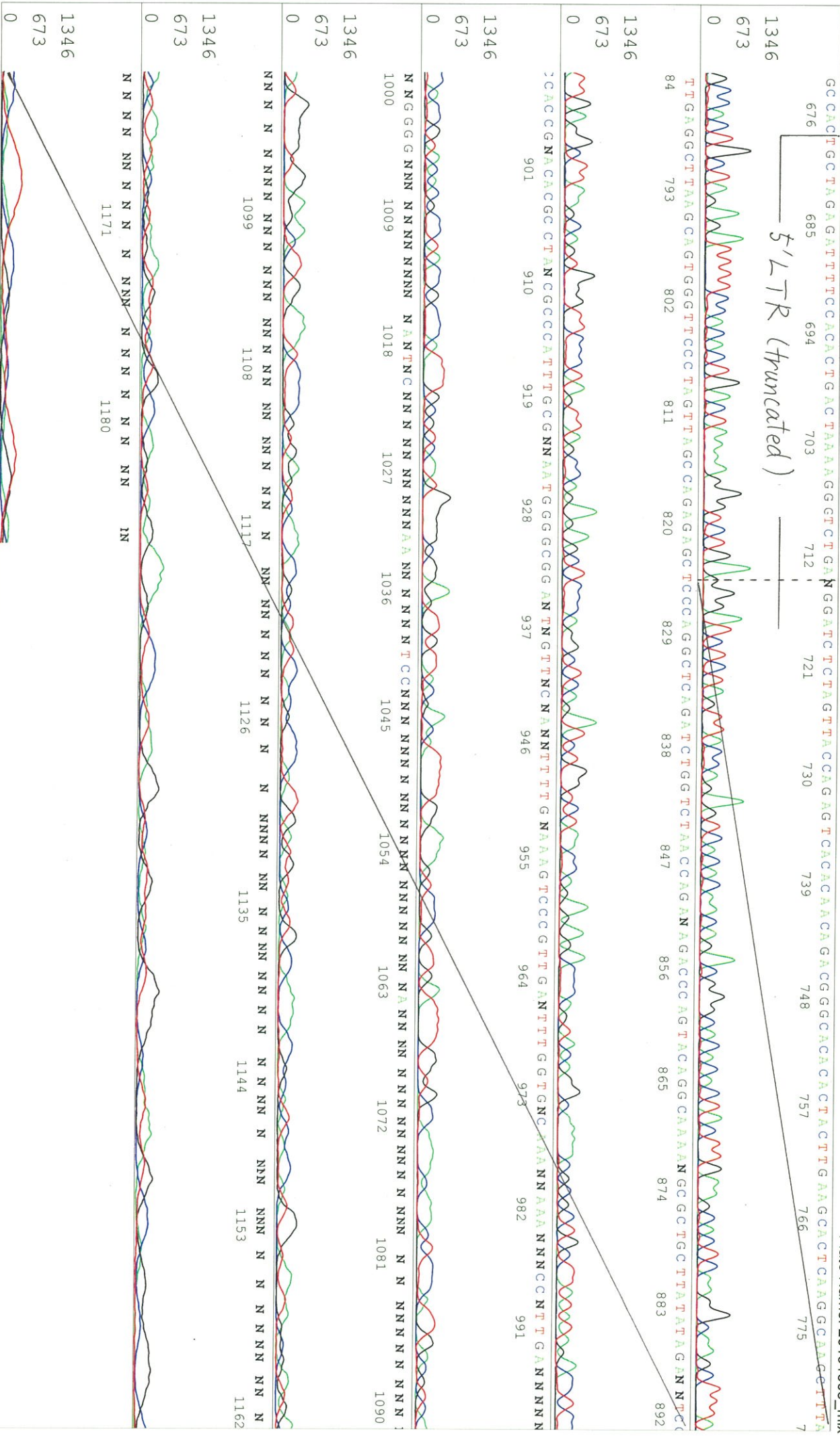
KB\_3500\_POP7\_BDTV3.mob

Pts 1357 to 13566 Pk1 Loc:1334

Version 6.0 HISQV Bases: 968

KB.bcp  
KB 1.4.1.8 Cap:7

Oct 08, 2019 01:45PM, JST  
Oct 08, 2019 02:11PM, JST  
Spacing: 12.1 Pts/Panel1350  
Plate Name: 20191008\_mix





S/N G:40 A:44 T:39 C:56  
 KB.bcp  
 KB 1.4.1.8 Cap:10

primer name *E* : cPPT+CTS\_v2\_F  
 5'-AGTGCAGGGGAAGAATAG-3'

D06551A7\_A91o\_2\_cPPT+CTS\_v2\_F  
 KB\_3500\_POP7\_BDTV3.mob  
 Pts 1358 to 13477 Pk1 Loc:1335  
 Version 6.0 HISQV Bases: 935

Oct 08, 2019 01:45PM, JST  
 Oct 08, 2019 02:14PM, JST  
 Spacing: 11.98 Pts/Panel1350  
 Plate Name: 20191008\_mix





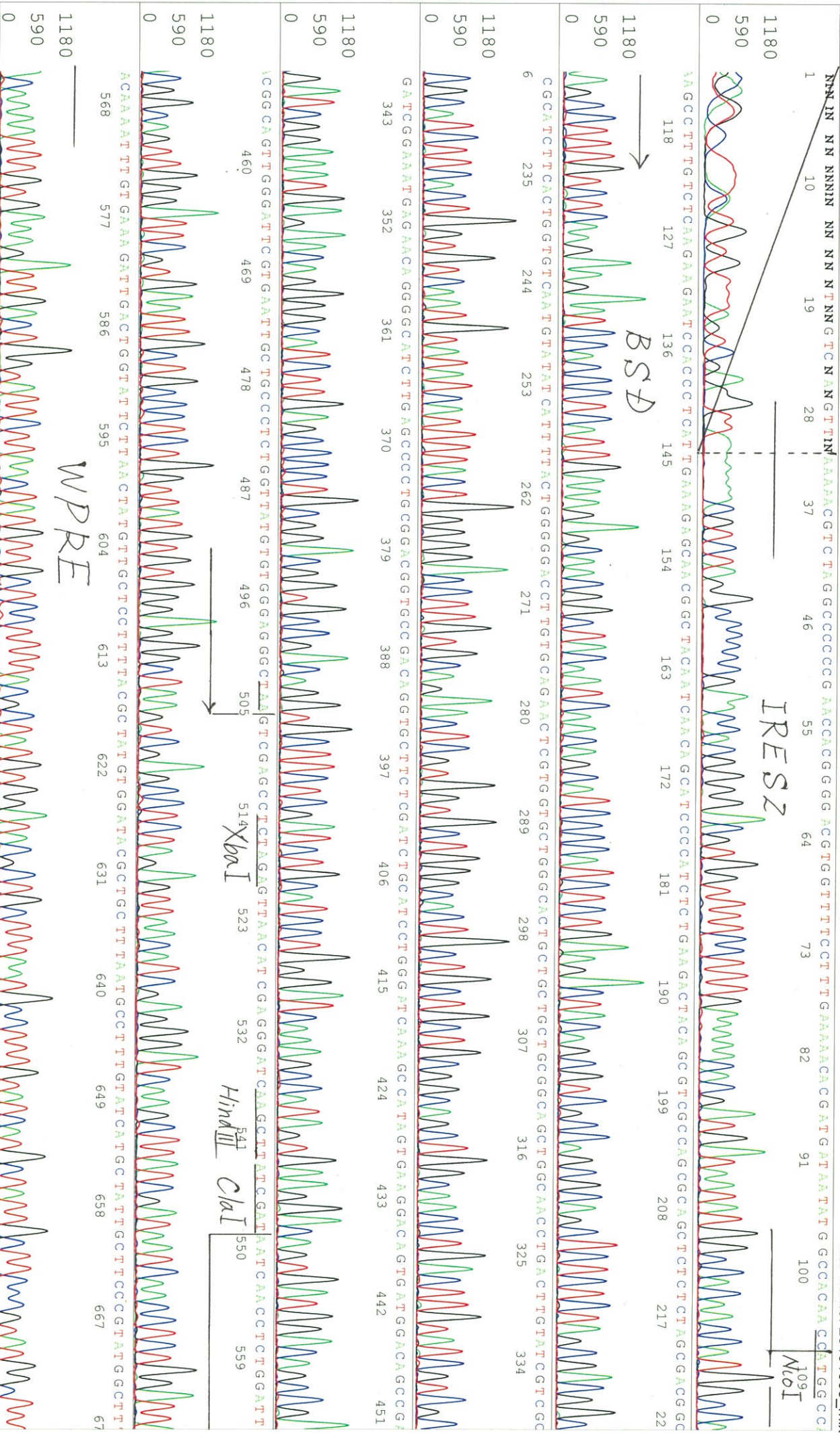




S/N G:131 A:117 T:124 C:178 primer name F : IRES-F  
KB.bcp 5-TTGATGGGATCTGATCTGG-3'

D06551A7\_A91o\_2\_IRES-F  
KB\_3500\_POP7\_BDTV3.mob  
Pts 1376 to 13618 Pk1 Loc:1353  
Version 6.0 HiSeqV Bases: 965

Oct 08, 2019 01:45PM, JST  
Oct 08, 2019 02:11PM, JST  
Spacing:12.08 Pts/Panel1350  
Plate Name: 20191008\_mix





S/N G:131 A:117 T:124 C:178

D06551A7\_A910\_2\_IRES-F

KB\_3500\_POP7\_BDTV3.mob

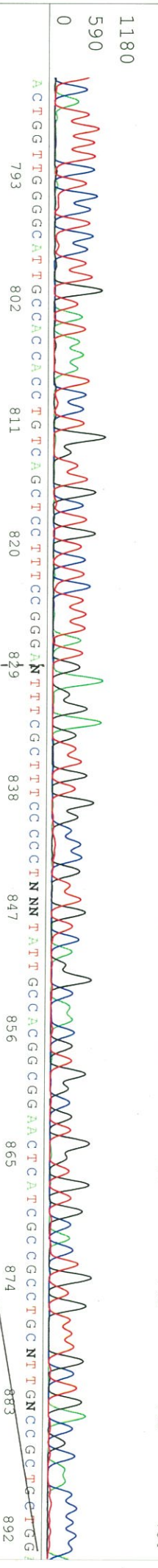
Pts 1376 to 13618 PK1 Loc:1353

Version 6.0 HiSQV Bases: 965

Oct 08, 2019 01:45PM, JST  
Oct 08, 2019 02:11PM, JST  
Spacing: 12.08 Pts/Panel/350  
Plate Name: 20191008\_mlx

KB bcp  
KB 1.4.1.8 Cap:16

FCATTTTCTCCCTCCCTTGTATAAATCCCTGGTGGCTGCTCTCTTATGAGGAGTTGTGGCCCGGTGTCCAGGCAACGTGGCGGTGTGGCACTGTGTTTGGTGAACGCAACCCCTC  
6 685 694 703 712 721 730 739 748 757 766 775 784



ACTGGTTGGGGCATTGGCCACCACCTGTTCAGCTCCCTTCCGGGAAATTTCGGCTTCCCCCTNNNTATTGCCACGGCGGAACTCATCGCCGCTGCTGNCCGCTGCTGG  
793 802 811 820 829 838 847 856 865 874 883 892

ANAGGGGCTCGGGCTGTINGGGCACTGACNATNNCGNNNGNTGTCGGGGAAAGCTGANGTCCCTTCCCANNGNNTGCCTCNNCTGNNGNNGNCNCNNNNTCTGNCGG  
901 910 919 928 937 946 955 964 973 982 991

GNNGNCCNTNNNGNNNGNNCNCNNCTNNNGNCGNNANNNTNNNTNNNNNNNGN NNN  
1000 1009 1018 1027 1036 1045 1054 1063 1072 1081 1090

NN  
1099 1108 1117 1126 1135 1144 1153 1162

NN  
1171 1180 1189







S/N G:114 A:111 T:92 C:156

D06551A7\_A9lo\_2\_BGH\_rev2

Oct 08, 2019 01:45PM, JST

KB.bcp

KB\_3500\_POP7\_BDTV3.mob

Oct 08, 2019 02:11PM, JST

KB 1.4.1.8 Cap:13

Pts 1364 to 13518 Pk1 Loc:1341

Spacing: 11.99 Pts/Panel1350

3ACTGGAAACCCACCTCCCTCCCTCTTGTGTGCTTCTAGCCAGGCACATCAGCATGTGGTAGCTGCTGTATTGCTTACTTGTGATTGCTCCATGTTTCTAGGCTCCGAC  
576 685 694 703 712 721 730 739 748 757 766 775 78

