

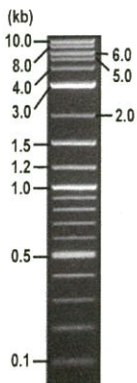


**RIKEN DNA BANK**

clone name : pDEST131NGFP\_BAZ1B

- Clone ID : RDB\_17334
- Lot : 17334\_A9Eh
- DNA Concentration : 25 nanogram/microliter
- Volume : 40 microliter
- Form : DNA solution in TE buffer
- Host : DH5 alpha
- Culture : LB medium
- Antibiotics : 100 microgram/ml Ampicillin
- Purification : QIAGEN QIAprep Spin Miniprep kit
- Digestion by restriction enzyme

1 kb Plus DNA Ladder  
(NEB#N3200L),  
250 ng/well



Electrophoresis : 200 nanogram DNA per lane ; 1% agarose gel , 1 x TAE Buffer

Restriction enzyme	Expected size of fragment
<u>NheI</u>	<u>10.6</u> kbp
<u>Sall</u>	<u>8.4, 2.2</u> kbp
<u>KpnI</u>	<u>7.5, 3.1</u> kbp
	kbp

● Confirmation of the insertion sequence

Sequence name	Primer name	Sequence name	Primer name
Sequence - A	mVenus-M_F	Sequence - E	-
Sequence - B	BGH_rev2	Sequence - F	-
Sequence - C	CMV-Forward	Sequence - G	-
Sequence - D	SV40polyA_R2	Sequence - H	-

APPROVED BY :



S/N G:488 A:396 T:269 C:393

primer name A : mVenus-M\_F

D06261A2\_A9Eh\_3\_mVenus-M\_F

Aug 05,2019 02:15PM, JST

KB.bcp

5'-ACTACACAGCCACCAACGTC-3'

KB\_3500\_POP7\_BDTV3.mob

Aug 05,2019 02:55PM, JST

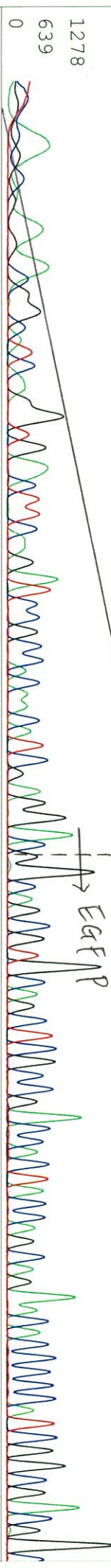
KB 1.4.1.8 Cap:16

Pts 1424 to 12752 PK1 Loc:1401

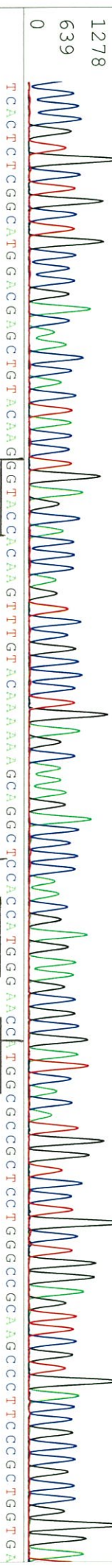
Version 6.0 HISQV Bases: 989

Spacing:11.28 Pts/Panel1350

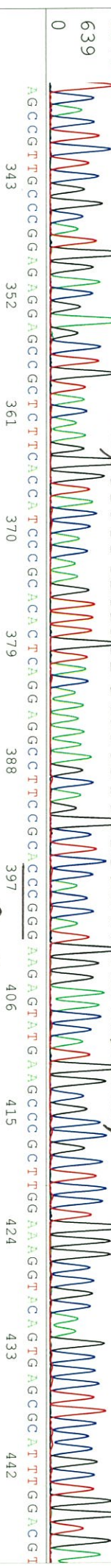
1 NNN NNN NNN JN N NG CN T CN G NG AN T T CN G AN CC G CN CA CA T CG AG G NN G G C C A G C G T G C A G C T C C G C C A C C A C T A C C A G C A G A C A C C C C A T C G G C G A C C G



9 C C C C G T G C T G C T G C C C G A C A C C A C T A C C C T G A G C A C C C A G T C C G C C C T G A G C A A A G A C C C C A A C C G A G A A G C C G C G A T C A C A T G G T C C T G C T G G A G T T C C G T G A C C C G C G C C G G A



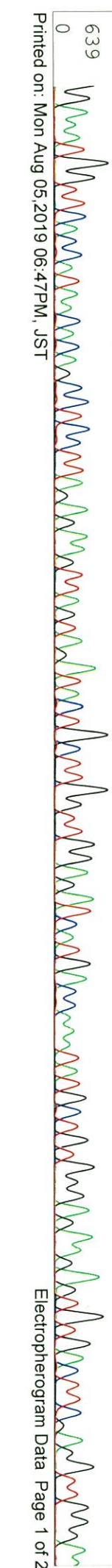
T C A C T C T C G G C A T G G A C G A G C T G T A C A A G G G T A C C A C A A G T T T G T A C A A A A A A G C A G G C T C C A C C A T G G A A C C A T G G C C C G C C C T C C T G G G C C G C A A G C C C T T C C C G C T G G T G A



A G C C G T T G C C C C G G A G A G G A G C C G C T C T T A C C A T C C C C G A C A C T C A G G A G G C T C C C G C A C C C G G A A G A G T A T G A A G C C C G C T T G G A A A G G T A C A G T G A G C C A T T T G G A C G T



G C A A G A G T A C T G G A A G C A G T C A G C T A C A C A C A A G G A A G C C T G G G A G A G A A C A G A A G T T G C T G A G C T T T G A A G G A G A G T T C C T G C C T G G T A T G A A G C T T G T T C T



S/N G:488 A:396 T:269 C:393

D06261A2\_A9Eh\_3\_mVenus-M\_F

Aug 05,2019 02:15PM, JST

KB.bcp

KB\_3500\_POP7\_BDTV3.mob

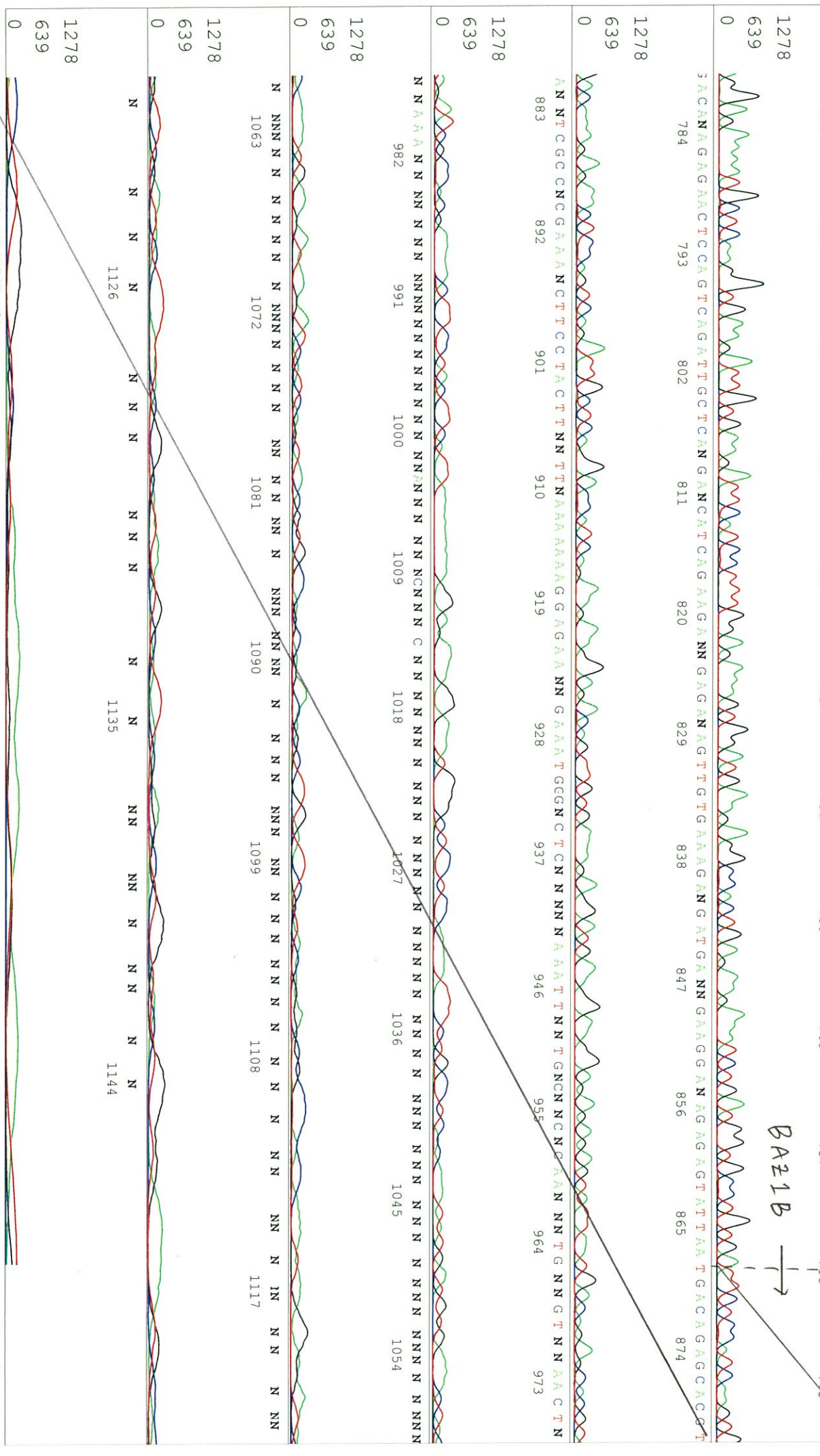
Aug 05,2019 02:55PM, JST

KB 1.4.1.8 Cap:16

Pis 1424 to 12752 PK1 Loc:1401

Spacing:1.28 Pis/Panel1350

Version 6.0 HISQV Bases: 989



S/N G:247 A:167 T:198 C:240

primer name **B** : BGH\_rev2

KB\_bcp

Aug 05,2019 02:15PM, JST

KB 1.4.1.8 Cap:19

5'- TATTAGGAAAGGACAGTGGG -3'

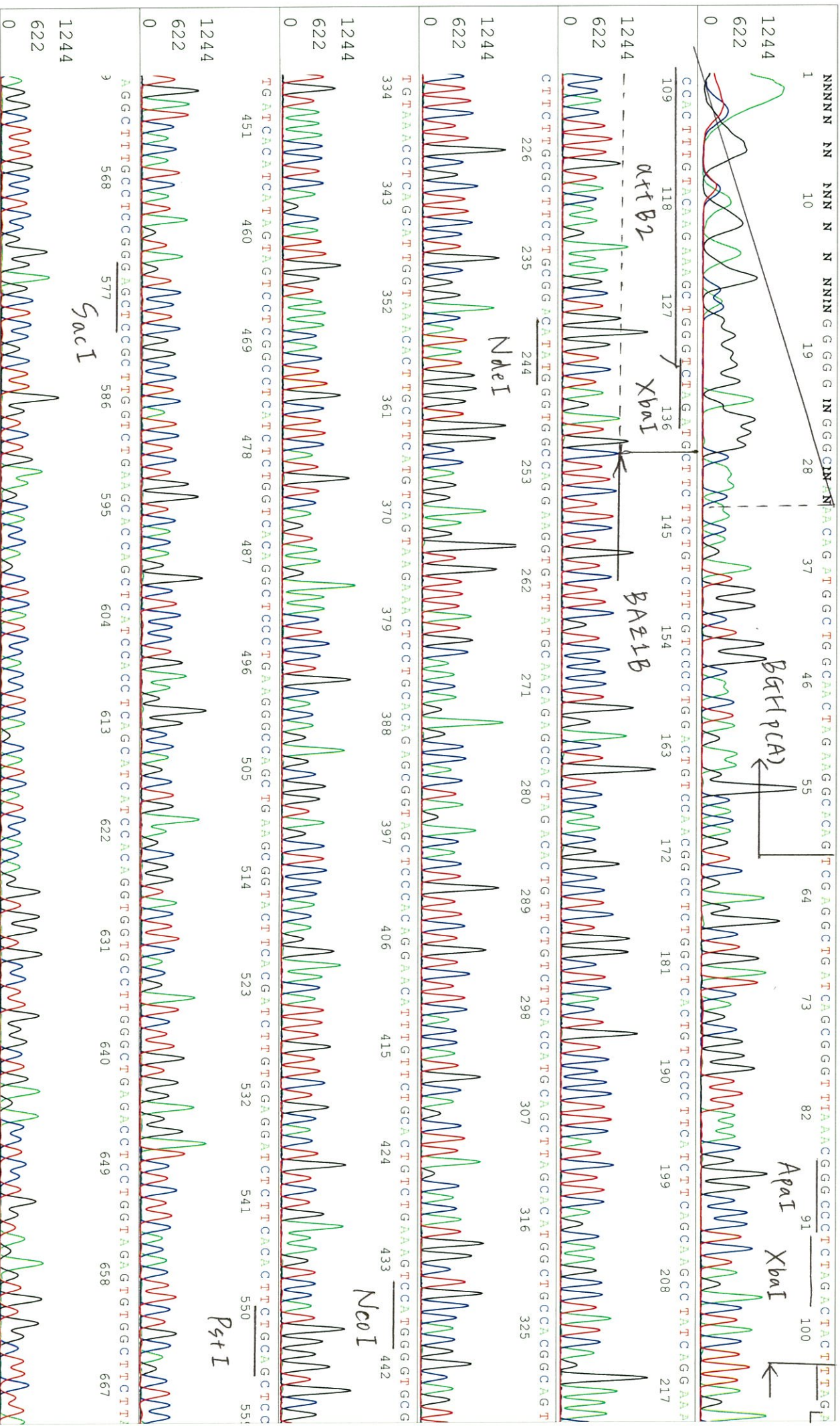
Pls 1439 to 12708 Pk1 Loc:1416

Aug 05,2019 02:55PM, JST

Version 6.0 HISQV Bases: 1006

Spacing:1.26 Pls/Panel1350

Plate Name: 20190805 Kitaku





S/N G:601 A:435 T:283 C:640

primer name C : CMV-Forward

KB\_bcp KB 1.4.1.8 Cap:13

Aug 05,2019 02:15PM, JST

5'- GCACCAAAATCAACGGGACTT -3'

KB 3500\_POP7\_BDTV3.mob

Pts 1443 to 12710 Pk1 Loc:1420

Aug 05,2019 02:55PM, JST

Version 6.0 HiSeqV Bases: 969

