

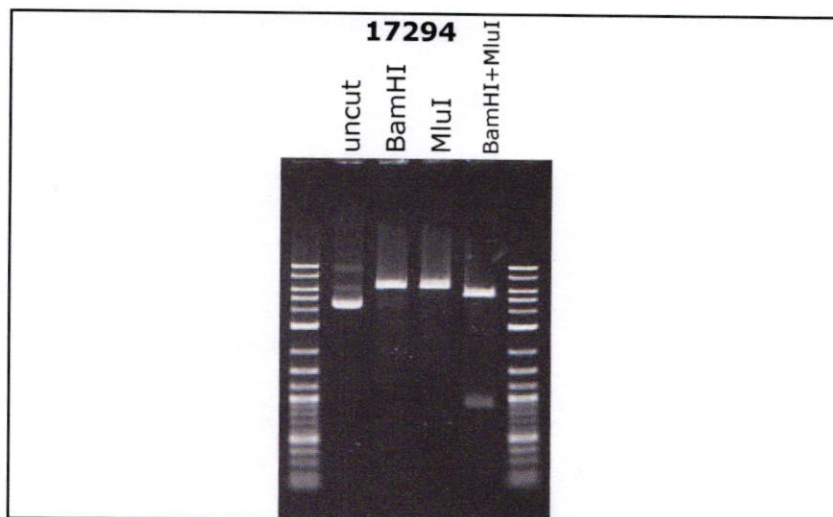
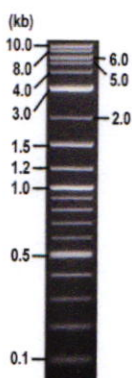


RIKEN DNA BANK

clone name : pET47-eIF4A1-19-406

- Clone ID : RDB_17294
- Lot : 17294_A9Db
- DNA Concentration : 25 nanogram/microliter
- Volume : 40 microliter
- Form : DNA solution in TE buffer
- Host : DH5 alpha
- Culture : LB medium
- Antibiotics : 25 microgram/ml Kanamycin
- Purification : QIAGEN QIAprep Spin Miniprep kit
- Digestion by restriction enzyme

1 kb Plus DNA Ladder
(NEB#N3200L),
250 ng/well



Electrophoresis : 100 nanogram DNA per lane ; 1% agarose gel , 1 x TAE Buffer

Restriction enzyme	Expected size of fragment
BamHI	6.3 kbp
MluI	6.3 kbp
BamHI+MluI	5.4, 0.9 kbp
	kbp

● Confirmation of the insertion sequence

Please be sure to check our sequence analysis results before your request.

Sequence name	Primer ID	Primer name	Confirmed feature
Sequence - A	Pr0141	pBR_BamHI_R2	T7 pro,lacO,RBS,6xHis,HRV 3C site,insert 5'
Sequence - B	Pr0142	f1ori_R3	T7 ter,insert 3'
Sequence - C	Pr0409	lacIpro_F	lacI pro,lacI
Sequence - D	-	-	-
Sequence - E	-	-	-
Sequence - F	-	-	-
Sequence - G	-	-	-
Sequence - H	-	-	-

APPROVED BY



S/N G:145 A:176 T:106 C:14 primer name A : pBR_BamHI_R2

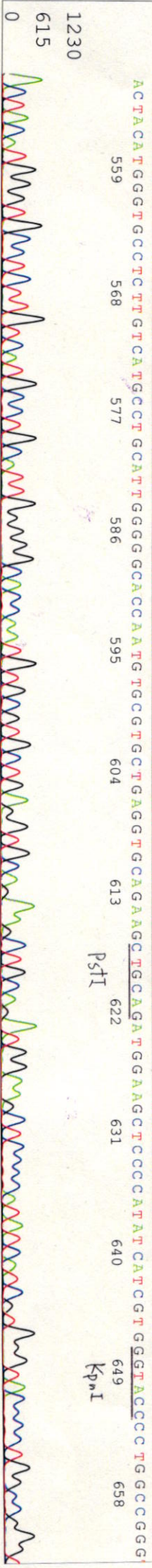
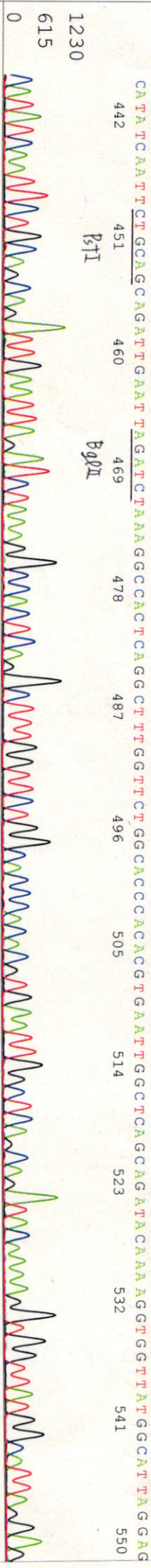
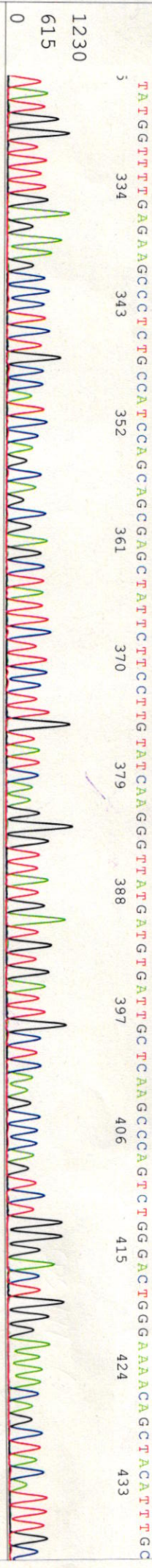
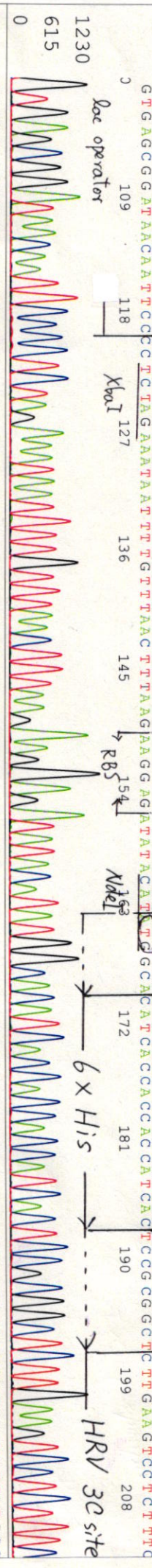
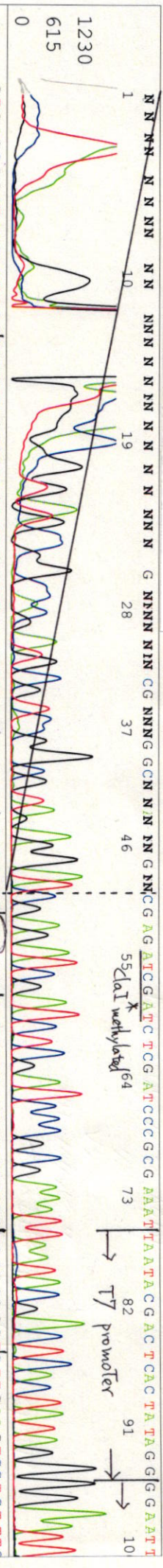
KB.bcp KB_3500_POP7_BDTV3.mob Pts 1339 to 12995 Pk1 Loc:1316

Jun 26, 2019 03:04PM, JST Spacing:11.41 Pts/Panel1350

KB 1.4.1.8 Cap.3 5'-ATGTCGGCGATATAGCGGC-3'

Version 6.0 HiSQV Bases: 984

Plate Name: 20190626_mix



S/N G:216 A:173 T:157 C:221

primer name B : f1ori_R3

KB_3500_POP7_BDTV3.mob

Jun 18, 2019 02:11PM, JST

KB.bcp

5'- TTAATGCGCCGCTACAGGGC -3'

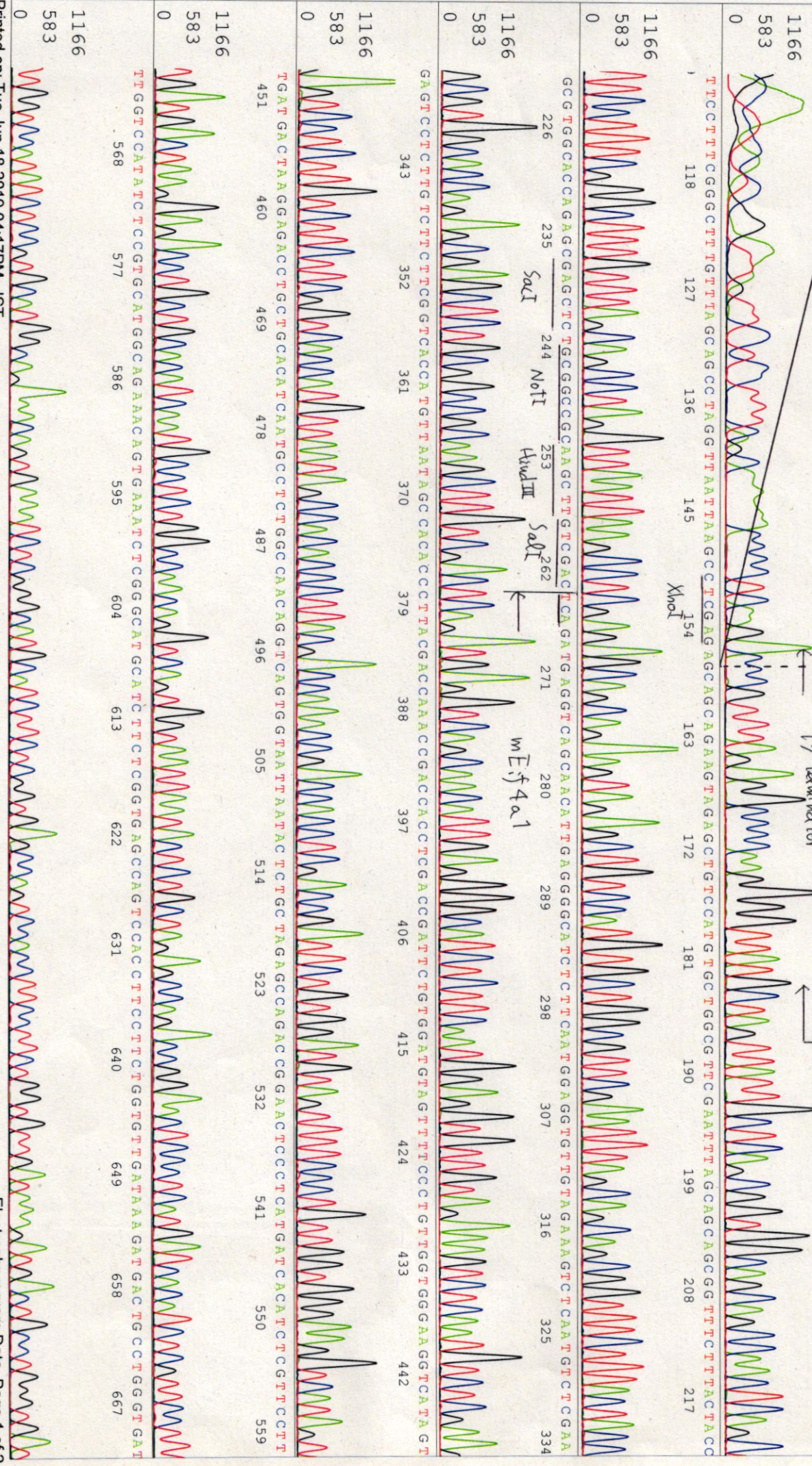
Pls 1364 to 12949 Pk1 Loc:1341

Jun 18, 2019 02:37PM, JST

KB 1.4.1.8 Cap:4

Version 6.0 HiSeqV Bases: 1009

Plate Name: 20190618 mix



TCGCAATCAAAATTCAGCCGATAGCGGAACGGGAAAGCGACTGGAGTGCATGTCGGTTTTCACAAACCATGCAAAATGCTGANNGAGGGCATCGTTCCCACTGG

1296
648

$\lambda < I$

ATGCTGGTTGCCCANCGATCAGATGGCCGCTGGCCGANTGCGCCGATTAACCNAGTCNNGGCTGCGNCGTTGGTGCCGNNATCTCN NNNNTGGGATANNAA

1296
648

ATACCNAA NACAGCTCN NGTTAATAATCCCGCCGTTAAACCA CCN TCAAAANNNG NNTTT C NNCNGC NNGGGGCAAAACNN CN NGN AN CN NNTNGCTGN

1296
648

NNCTCTCTCNCNNGN CNNNNNNNNGANNNGN NAA NNAN CN NNNNNN NNNNT NNNNNN NNNAAAANN NAAA NNN NNNNNN NNNN

1296
648

NNNN NNN NNN NNN NNN NNNNNNN NNNNNNN NNNNNNN NNNNNNN NNNNNNN NNNNNNN NNNNNNN NNNNNNN NNNNNNN NNNNNNN NNNNNNN

1296
648

NNNN NNN NNN NNN NNN NNNNNNN NNNNNNN NNNNNNN NNNNNNN NNNNNNN NNNNNNN NNNNNNN NNNNNNN NNNNNNN NNNNNNN NNNNNNN

1296
648