

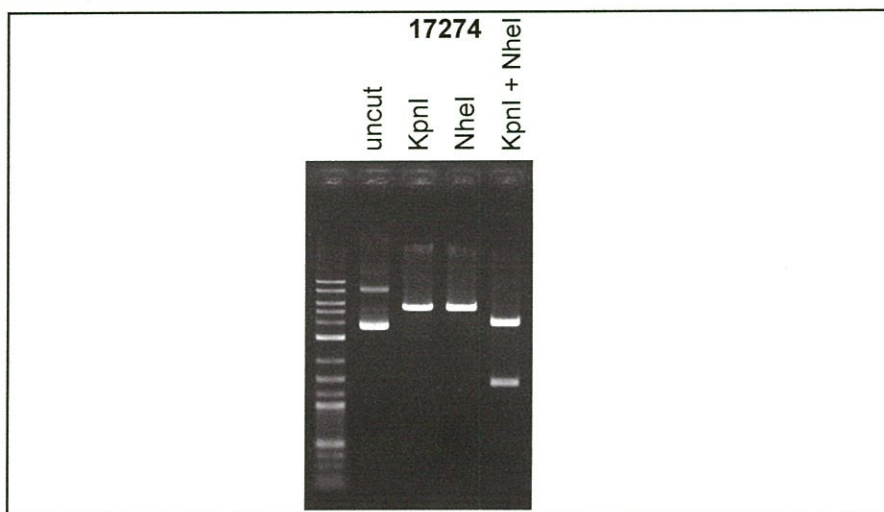
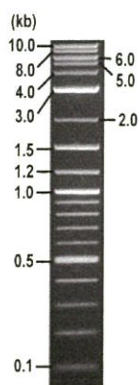


RIKEN DNA BANK

clone name : pEGFP-C1-Rab27B

- Clone ID : RDB _ 17274
- Lot : 17274 _ A9E1
- DNA Concentration : 25 nanogram/microliter
- Volume : 40 microliter
- Form : DNA solution in TE buffer
- Host : DH5 alpha
- Culture : LB medium
- Antibiotics : 25 microgram/ml Kanamycin
- Purification : QIAGEN QIAprep Spin Miniprep kit
- Digestion by restriction enzyme

1 kb Plus DNA Ladder
(NEB#N3200L),
250 ng/well



Electrophoresis : 100 nanogram DNA per lane ; 1% agarose gel , 1 x TAE Buffer

Restriction enzyme	Expected size of fragment
KpnI	5.4 kbp
NheI	5.4 kbp
KpnI + NheI	3.9, 1.4 kbp
	kbp

● Confirmation of the insertion sequence

Please be sure to check our sequence analysis results before your request.

Sequence name	Primer ID	Primer name	Confirmed feature
Sequence - A	Pr0402	EGFP-C2	EGFP 3', insert 5'
Sequence - B	Pr0623	SV40polyA-R2	insert 3'
Sequence - C	Pr0016	CMV_Forward	CMV pro, EGFP 5'
Sequence - D	Pr0154	SV40pro_F_V2	NeoR_KanR
Sequence - E	-	-	-
Sequence - F	-	-	-
Sequence - G	-	-	-
Sequence - H	-	-	-

APPROVED BY :



S/N: G:192 A:245 T:221 primer name A : EGFP-C2

KB_bcp KB_3500_POP7_BDTV3.mob

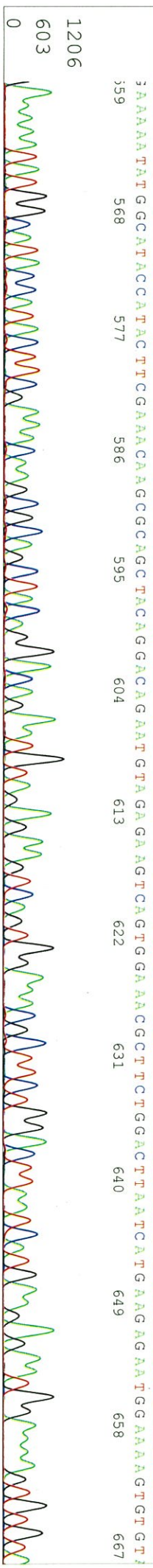
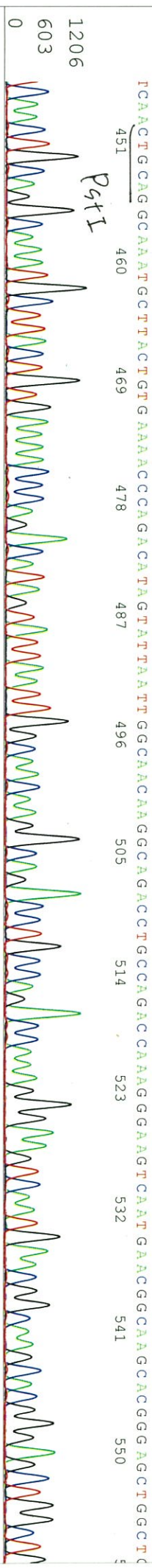
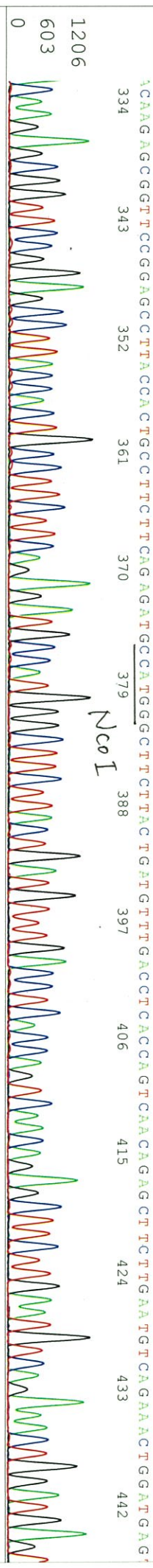
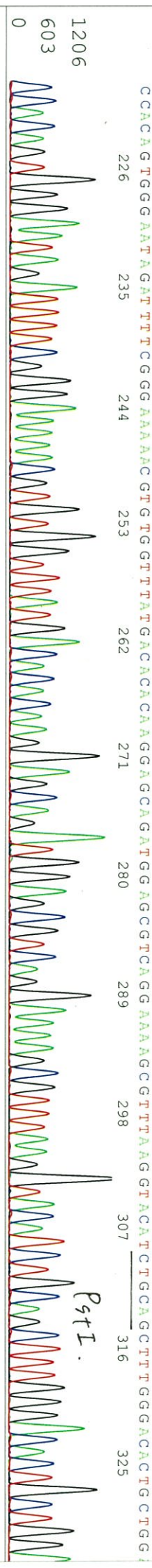
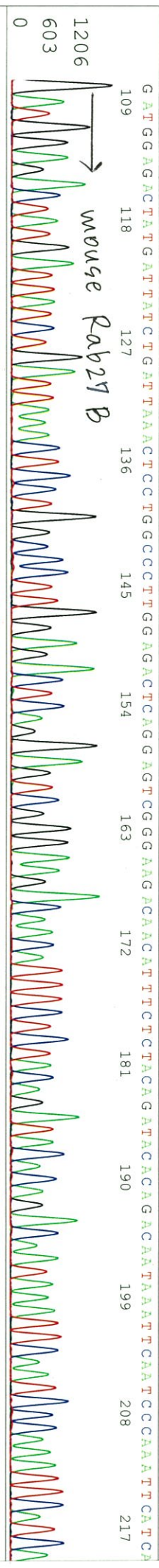
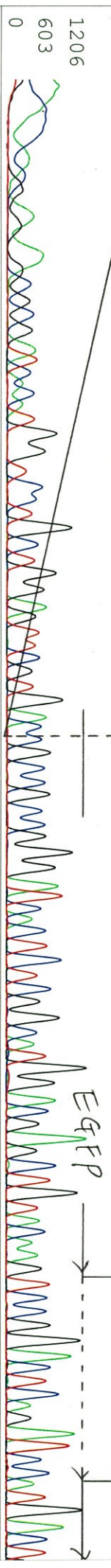
May 29, 2019 05:46PM, JST

KB 1.4.1.8 Cap.3 5'-ACTACCTGAGCACCCAGTCC-3'

Pts 1542 to 12857 Pk1 Loc:1519

May 29, 2019 06:12PM, JST

Version 6.0 HiSQV Bases: 942



S/N G:192 A:245 T:221 C:265

D06280G2_A9EI_2_EGFP-C2

May 29, 2019 05:45PM, JST

KB.bcp

KB_3500_POP7_BDTV3.mob

May 29, 2019 06:12PM, JST

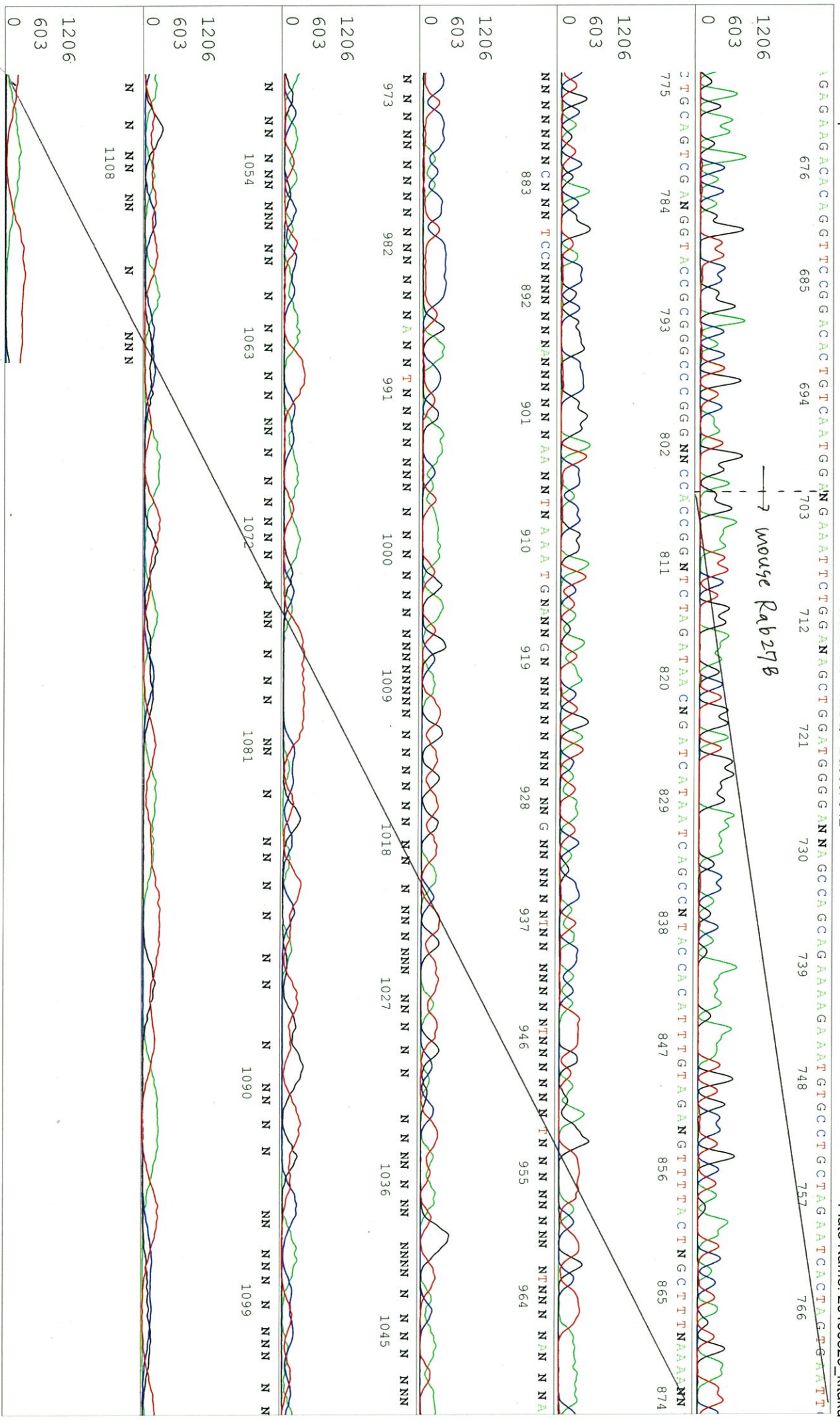
KB 1.4.1.8 Cap:3

Pts 1542 to 12857 Pk1 Loc:1519

Spacing: 11.35 Pts/Panel1350

Version 6.0 HISQV Bases: 942

Plate Name: 20190529_kitaku



S/N G:307 A:210 T:281 C:254 primer name β : SV40pro_R2

D06280G2_A9E1_2_SV40polyA-R2

KB_bcp KB_3500_POP7_BDTV3.mob

Pts 1388 to 13510 Pk1 Loc:1365

Version 6.0 HISQV Bases: 1043

Jul 03,2019 01:59PM, JST
Jul 03,2019 02:40PM, JST
Spacing:1.8 Pts/Panel1350
Plate Name: 20190703 Kitaku

KB 1.4.1.8 Cap:18

5- GACTTCCACACACCTGGTTGC -3'

