

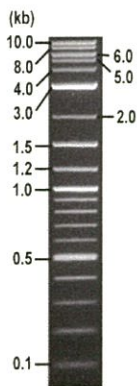


RIKEN DNA BANK

clone name : pEGFP-C1-Rab3B

- Clone ID : RDB _ 17241
- Lot : 17241 _ A9E1
- DNA Concentration : 25 nanogram/microliter
- Volume : 40 microliter
- Form : DNA solution in TE buffer
- Host : DH5 alpha
- Culture : LB medium
- Antibiotics : 25 microgram/ml Kanamycin
- Purification : QIAGEN QIAprep Spin Miniprep kit
- Digestion by restriction enzyme

1 kb Plus DNA Ladder
(NEB#N3200L),
250 ng/well



Electrophoresis : 100 nanogram DNA per lane ; 1% agarose gel , 1 x TAE Buffer

Restriction enzyme	Expected size of fragment	
<u>NheI</u>	<u>5.4</u>	kbp
<u>SmaI</u>	<u>5.4</u>	kbp
<u>NheI+SmaI</u>	<u>3.9, 1.4</u>	kbp
		kbp

● Confirmation of the insertion sequence

Please be sure to check our sequence analysis results before your request.

Sequence name	Primer ID	Primer name	Confirmed feature
Sequence - A	Pr0402	EGFP-C2	EGFP 3', insert
Sequence - B	Pr0623	SV40polyA_R2	insert 3'
Sequence - C	Pr0016	CMV_Forward	CMV pro, EGFP 5'
Sequence - D	Pr0154	SV40pro_F_V2	NeoR_KanR
Sequence - E	-	-	-
Sequence - F	-	-	-
Sequence - G	-	-	-
Sequence - H	-	-	-

APPROVED BY :



S/N G:259 A:271 T:23 primer name A : EGFP-C2

D06280C5_A9EI_2_EGFP-C2

May 31,2019 02:54PM, JST

KB.bcp KB 1.4.1.8 Cap:15 5'-ACTACCTGAGCACCACAGTCC-3'

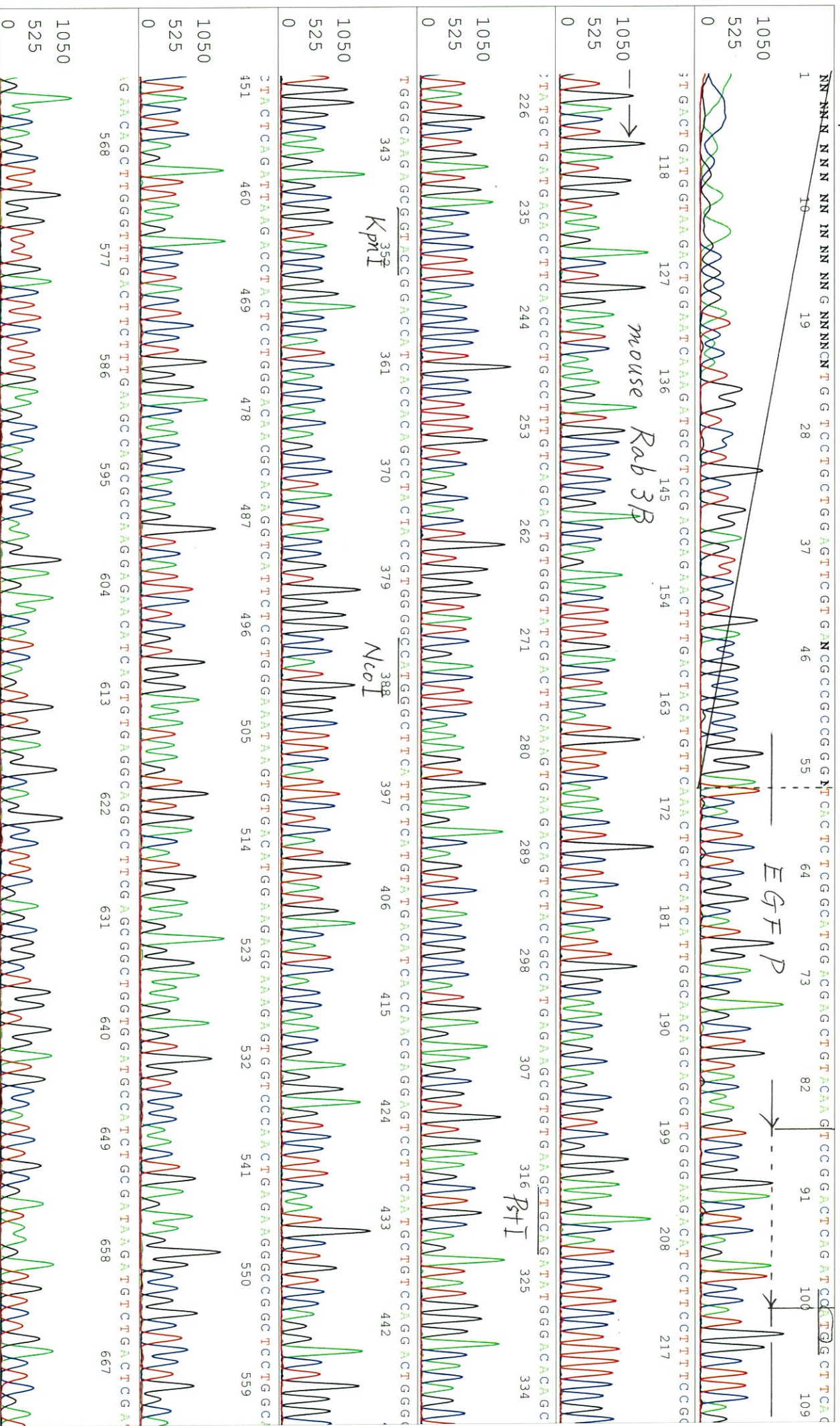
KB_3500_POP7_BDTV3.mob

May 31,2019 03:21PM, JST

Version 6.0 HISQV Bases: 1018

Pls 1346 to 13070 Pk1 Loc:1323

Plate Name: 20190531 Kitaku



S/N G:259 A:271 T:239 C:350

KB_3500_POP7_BDTV3.mob

May 31, 2019 02:54PM, JST

KB.bcp

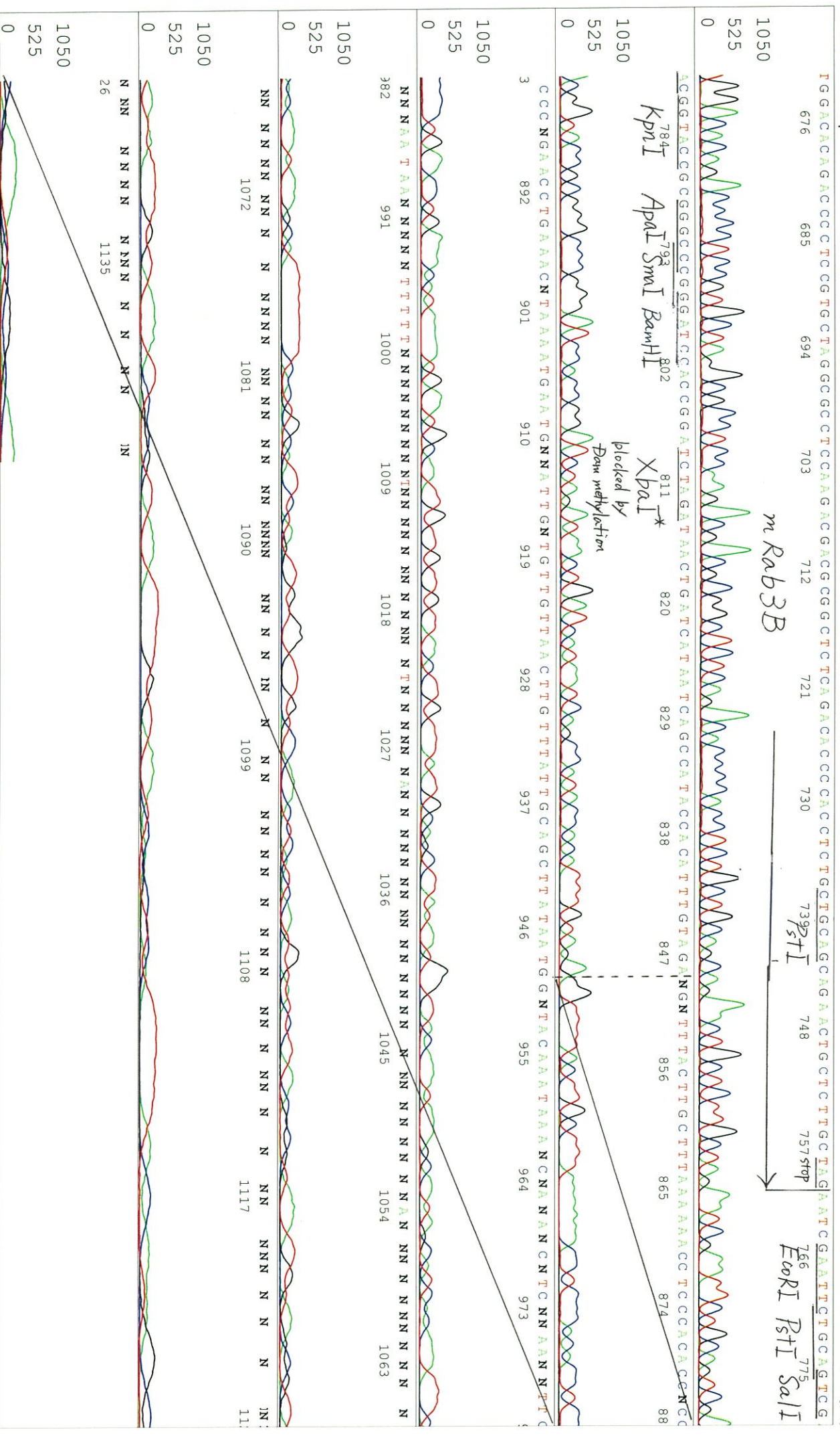
Pis 1346 to 13070 Pk1 Loc: 1323

May 31, 2019 03:21PM, JST

KB 1.4.1.8 Cap:15

Version 6.0 HISQV Bases: 1018

Spacing: 11.64 Pts/Panel1350



S/N G:86 A:82 T:92 C:114 primer name *B* : SV40polyA_R2

KB: bcp

May 31, 2019 02:54PM, JST

KB 1.4.1.8 Cap: 18

5'-GTGAAATTTGTGATGCTATTGC-3'

KB_3500_POP7_BDTV3.mob

May 31, 2019 03:21PM, JST

Version 6.0 HISQV Bases: 1006

Spacing: 11.61 Pts/Panel1350

Plate Name: 20190531 kitaku

