

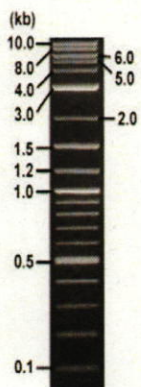


RIKEN DNA BANK

clone name : pCDNA3-ATF3

- Clone ID : RDB_05719
- Lot : 16929_A9B8
- DNA Concentration : 25 nanogram/microliter
- Volume : 40 microliter
- Form : DNA solution in TE buffer
- Host : DH5 alpha
- Culture : LB medium
- Antibiotics : 100 microgram/ml Ampicillin
- Purification : QIAGEN QIAprep Spin Miniprep kit
- Digestion by restriction enzyme

2-Log DNA Ladder
(NEB#N3200L),
250 ng/well



Electrophoresis : 100 nanogram DNA per lane ; 1% agarose gel , 1 x TAE Buffer

Restriction enzyme	Expected size of fragment	
XhoI	6.0	kbp
PstI	4.4, 1.6	kbp
NcoI	3.3, 1.9, 0.7	kbp
		kbp
		kbp

● Confirmation of the insertion sequence

Sequence name	Primer name	Sequence name	Primer name
Sequence - A	CMV_Forward	Sequence - E	-
Sequence - B	SV40pro_F	Sequence - F	-
Sequence - C	-	Sequence - G	-
Sequence - D	-	Sequence - H	-



APPROVED BY :

S/N G:129 A:153 T:110 C:181 primer name **A** :CMV_Forward

KB.bcp KB_3500_POP7_BDTV3.mob KB_1.4.1.8 Cap:1

5' GCACCAAATCAACGGGACTT3' Pls 1468 to 14232 Pk1 Loc:1445

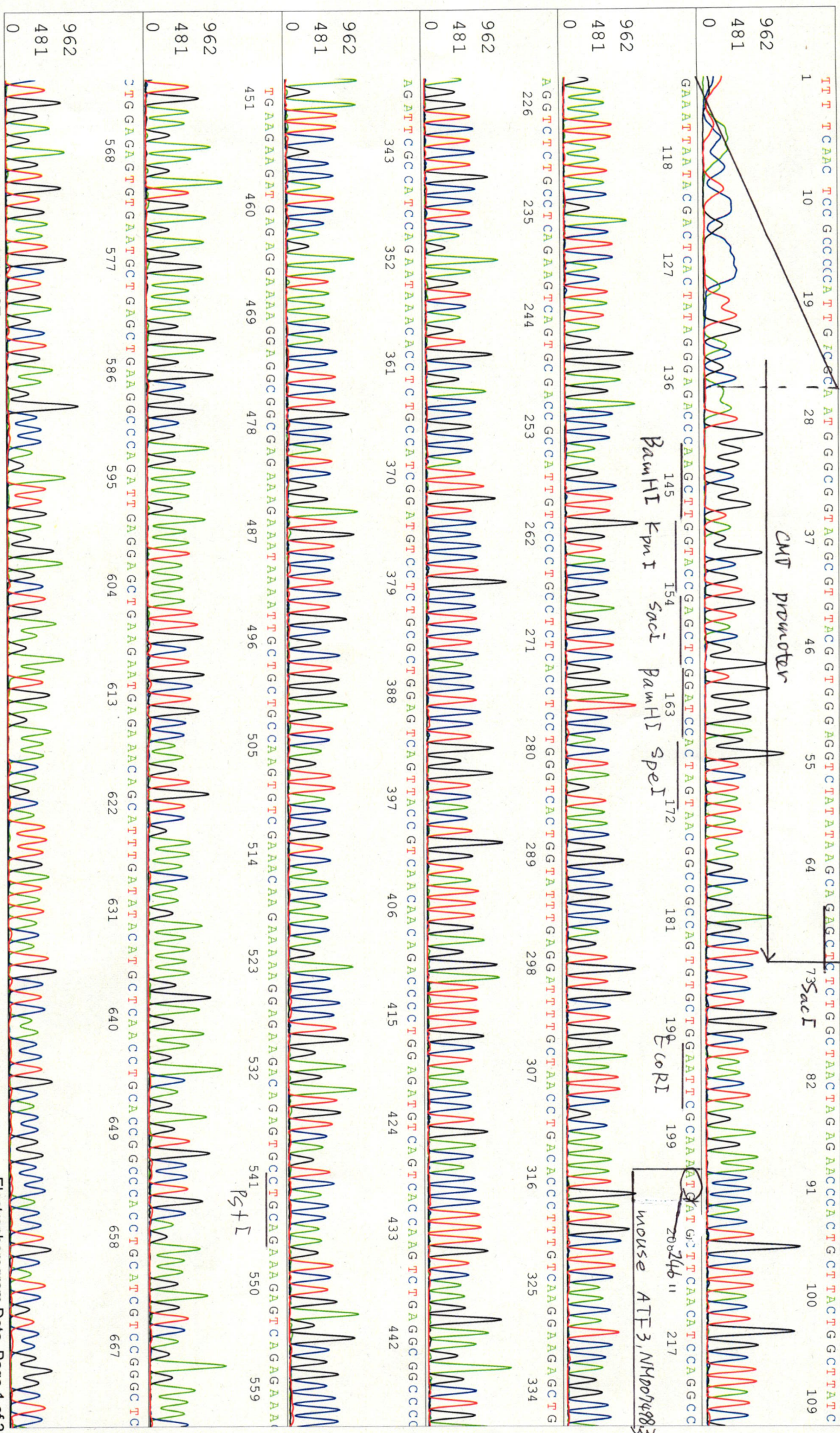
Version 6.0 HiSQV Bases: 1037

Feb 15, 2019 11:28AM, JST

Feb 15, 2019 11:57AM, JST

Spacing: 12.79 Pts/Panel1350

Plate Name: 20190215_dnabank



S/N G:67 A:67 T:64 C:88 primer name β : SV40pro_F
KB.bcp 5'TATTATTATGACAGAGCCGAGG3'
KB 1.4.1.8 Cap:2
05719_16929_A9B8_SV40pro_F
KB_3500_POP7_BDTV3.mob
Pfs 1429 to 14215 Pk1 Loc:1406
Version 6.0 HiSQV Bases: 1007



S/N G:67 A:67 T:64 C:88

05719_16929_A9B8_SV40pro_F

Feb 15, 2019 11:28AM, JST

KB.bcp

KB_3500_POP7_BDTV3.mob

Feb 15, 2019 11:57AM, JST

KB 1.4.1.8 Cap:2

Pts 1429 to 14215 PK1 Loc: 1406

Spacing: 12.84 Pts/Panel1350

Version 6.0 HiSQV Bases: 1007 Plate Name: 20190215_dhbank

