

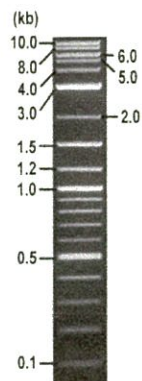


**RIKEN DNA BANK**

clone name : pMK377 (Hygro-P2A-mCherry2)

- Clone ID : RDB \_ 16815
- Lot : 16815 \_ A8Lp
- DNA Concentration : 25 nanogram/microliter
- Volume : 40 microliter
- Form : DNA solution in TE buffer
- Host : DH5 alpha
- Culture : LB medium
- Antibiotics : 100 microgram/ml Ampicillin
- Purification : QIAGEN QIAprep Spin Miniprep kit
- Digestion by restriction enzyme

2-Log DNA Ladder  
(NEB#N3200L),  
250 ng/well



Electrophoresis : 100 nanogram DNA per lane ; 1% agarose gel , 1 x TAE Buffer

Restriction enzyme	Expected size of fragment
<u>EcoRI</u>	<u>4.8</u> kbp
<u>BamHI</u>	<u>4.8</u> kbp
<u>EcoRI+BamHI</u>	<u>3.2, 1.6</u> kbp

● Confirmation of the insertion sequence

Sequence name	Primer name	Sequence name	Primer name
Sequence - A	pUC-M13_-100	Sequence - E	-
Sequence - B	reverse	Sequence - F	-
Sequence - C	HygR-C_F	Sequence - G	-
Sequence - D	-	Sequence - H	-

APPROVED BY :



S/N G:319 A:256 T:164 C:2 primer name A : pUC-M13\_-100

KB 3500\_POP7\_BDIv3.mob

Feb 22, 2019 02:35F

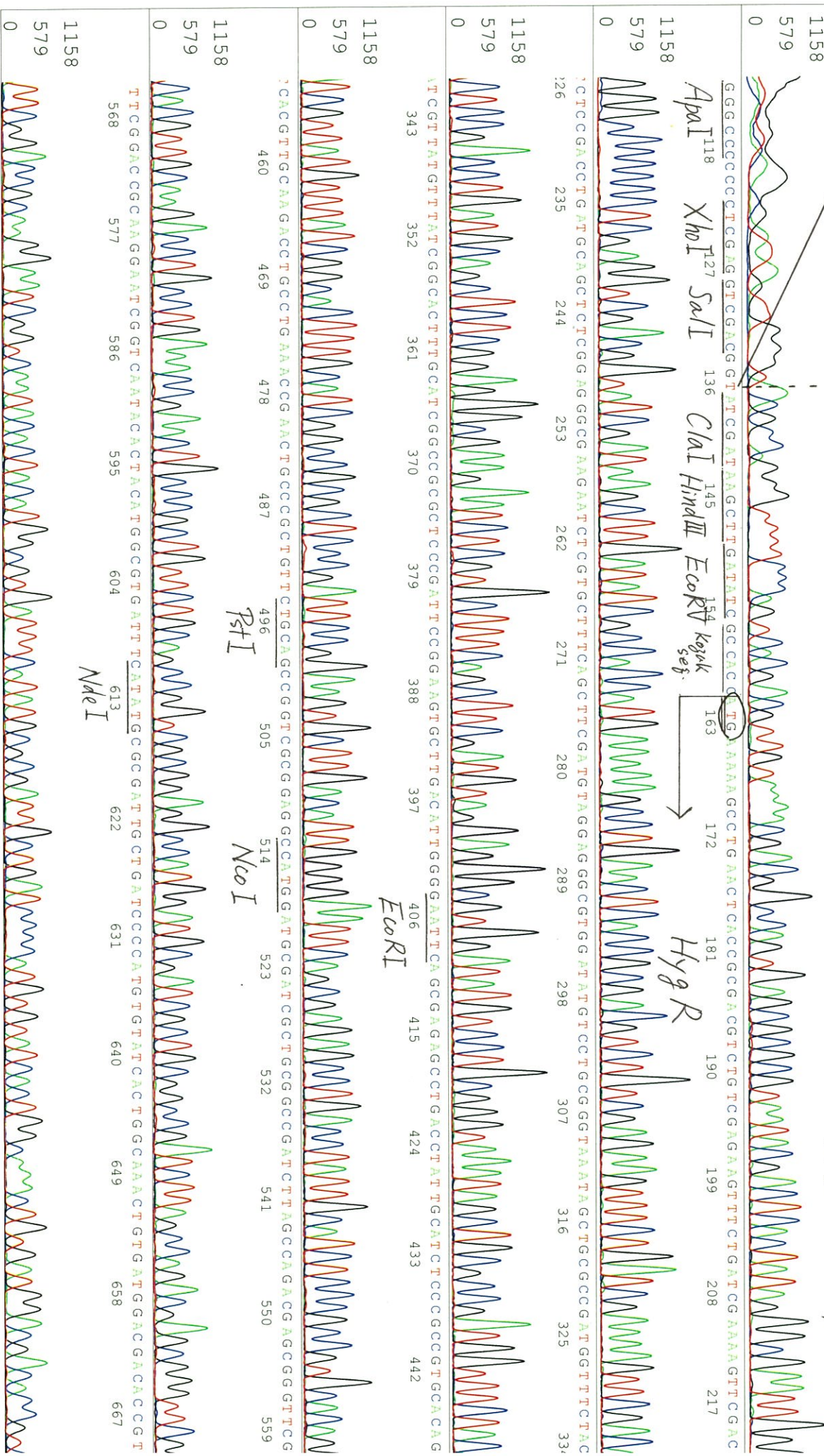
KB.bcp 5- ATTACGCCAGCTGGCGAAAGG-3'

Pls 1565 to 13008 Pk1 Loc:1542

Feb 22, 2019 03:14F

KB 1.4.1.8 Cap:19 Version 6.0 HiSQV Bases: 941

T7 promoter



S/N G:319 A:256 T:164 C:235

D06157B2\_A8Lp\_1\_pUC-M13\_-100

KB\_3500\_POP7\_BDTV3.mob

Feb 22, 2019 02:35F

KB.bcp

Pls 1565 to 13008 PK1 Loc:1542

Feb 22, 2019 03:14F

KB 1.4.1.8 Cap:19

Version 6.0 HiSQV Bases: 941

Spacing:11.6 Pts/Pai

CGTCCGTCGGCCAGGCTCTCCGATGAGCTGATGCTTTGGGCCGAGGACTGCCCCGAAATCCCGCACCTCGTGCAAGCCGATTTCCGGCTCCAACTCC

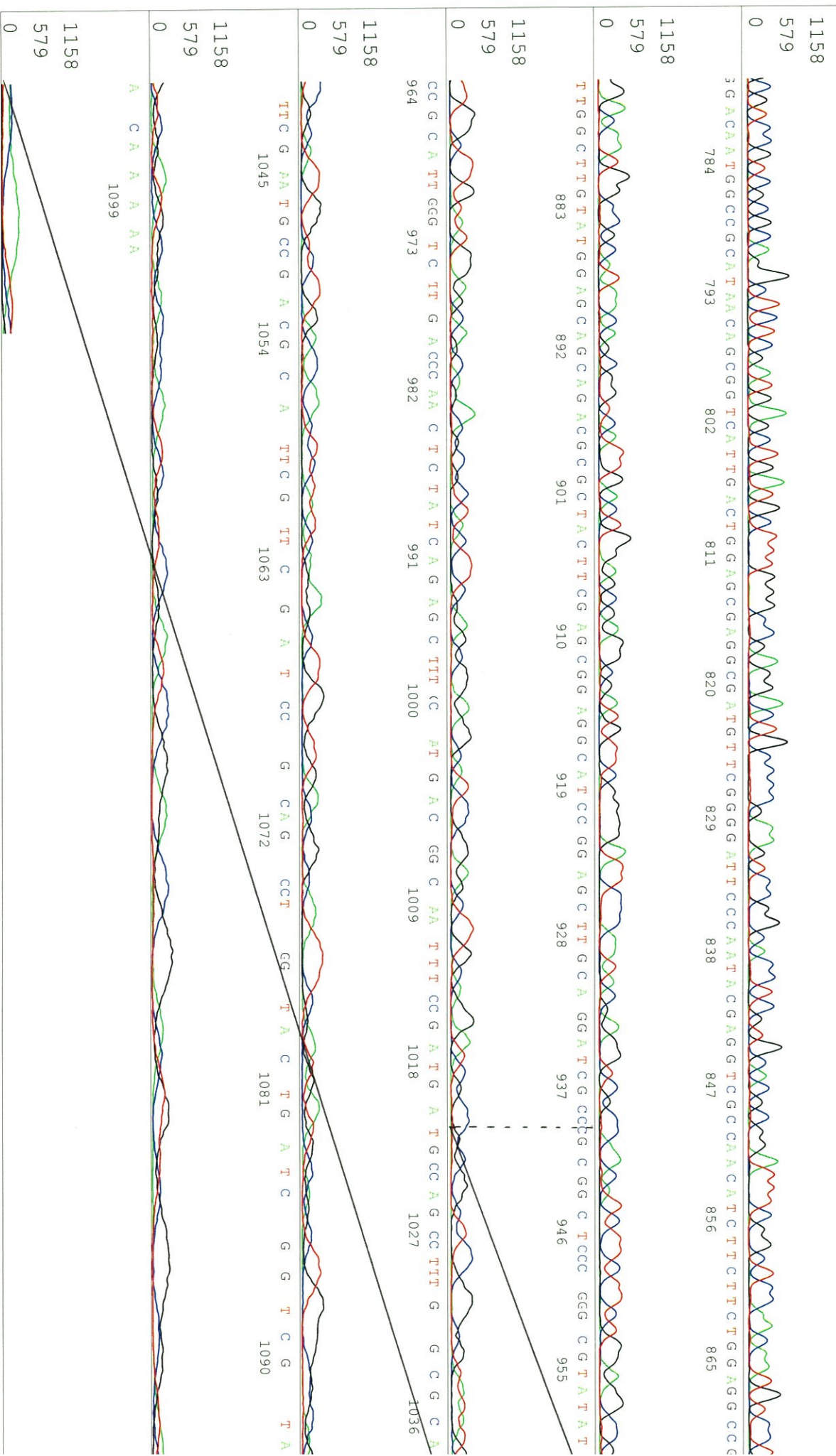
3GACAAATGGCCGCATAAACAAGCCGTCATTTGACTGGAGCGAGCCGATGTTCCGGGATTCCCAATAAGAGTCCGGCAATCTCTCTGGAGGCC

TTGGCTTGATAGGAGCAGCAGACGCGCTTACCTTCCGAGCCGAGGCAATCCGGAGCATTCCGGACAGATCCGCCCAATCCGCGCTCCGATAAT

CCGCATTTGGGTCTTTGATGATCCATATCAGAGCATTTCATGACGGCATAATTTCCGATGATGACCAAGCCTTTG GCGCA

TTCGAAATGCCGACGCATTCGTTCTCAGAGCATTTCAGATGATGACCAAGCCTTTG GCGCA

ACAAA 1099





Version 6.0 HISQV Bases: 956

1232 616 0 C T C G T A G G G G G G C C C C T C C G C C C T C G A T C T C G A A C T C C G T G G C C G T T C A C G G A G C C C C T C C A T G T G C A C C T T G A A G C C G C A T G A A C T C C T T G A T G A T G

616 1232 T G T T A T C C T C C T C G C C C C T T G C T C A C C A T A G A T C T A G G T C C A G G G T T C T C C A C C G T C T C C A G C C T T G C A G C A G G C T G A A G T T A G T A G C T C

616 1232 mCherry Z Bg/II PZA

616 1232 T C C T G T T C C T T G C C C T C G G A C G A G T G C T G G G G C G T C C G T T T C C A C T A T C G G C G A G T A C T T C T A C A C A G C C A T C G G T C C A G

616 1232 CC G C G C T T C T G C G G G C G A T T T G T G T A C G C C C G A C A G T C C C G G C T C C G G A T C G G G A C G A T T G C G T C G C A T

616 1232 A C C C T G C G C C C A A G C T G C A T C A T C G G A A T G G C C G T C C A A C C A A G A A G C C T C

616 1232 0 A T A A G A A G

616 1232 0

Printed on: Fri Feb 22, 2019 09:22AM, JST Electrotherogram Data Pa

S/N G:231 A:217 T:162 C:213 primer name C : Hygr-C\_F  
KB.bcp 5-ATAACAGCGGTGATGACTG-3'  
KB 1.4.1.8 Cap.22

D06157B2\_A8LP\_1\_Hygr-C\_F  
KB\_3500\_POP7\_BDIv3.mob  
Pis 1561 to 13059 PK1 Loc:1538  
Version 6.0 HiSQV Bases: 938

Feb 21, 2019 02:00P  
Feb 21, 2019 02:27P  
Spacing: 11.7 Pts/Par  
Plate Name: 2019022



S/N G:231 A:217 T:162 C:213

D06157B2\_A8LP\_1\_Hygr-C\_F  
KB\_3500\_POP7\_BDTV3.mob

Feb 21, 2019 02:00F  
Feb 21, 2019 02:27F

KB.bcp

Pts 1561 to 13059 Pk1 Loc: 1538

Spacing: 11.7 Pts/Pair

KB 1.4.1.8 Cap:22

Version 6.0 HiSQV Bases: 938

Plate Name: 2019022

