

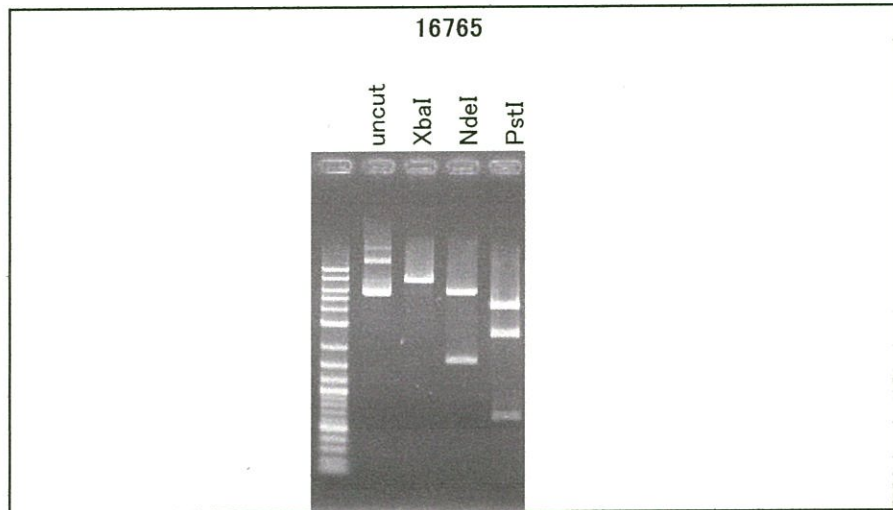
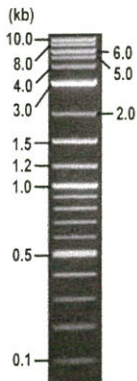


**RIKEN DNA BANK**

clone name : pDEST/mCherry-PIP5KB

- Clone ID : RDB \_ 16765
- Lot : 16765 \_ A8Km
- DNA Concentration : 25 nanogram/microliter
- Volume : 40 microliter
- Form : DNA solution in TE buffer
- Host : DH5 alpha
- Culture : LB medium
- Antibiotics : 100 microgram/ml Ampicillin
- Purification : QIAGEN QIAprep Spin Miniprep kit
- Digestion by restriction enzyme

2-Log DNA Ladder  
(NEB#N3200L),  
250 ng/well



Electrophoresis : 100 nanogram DNA per lane ; 1% agarose gel , 1 x TAE Buffer

Restriction enzyme	Expected size of fragment
<u>XbaI</u>	<u>7.7</u> kbp
<u>NdeI</u>	<u>5.9, 1.8</u> kbp
<u>PstI</u>	<u>4.4, 2.6, 0.7</u> kbp
_____	_____ kbp
_____	_____ kbp

● Confirmation of the insertion sequence

Sequence name	Primer name	Sequence name	Primer name
Sequence - A	<u>Rcd-C_F</u>	Sequence - E	-
Sequence - B	<u>f1ori_f</u>	Sequence - F	-
Sequence - C	<u>CMV_Forward</u>	Sequence - G	-
Sequence - D	<u>SV40pro_F</u>	Sequence - H	-

APPROVED BY :



S/N G:374 A:401 T:243 C:249  
KB.bcp  
KB 1.4.1.8 Cap.20

primer name A : Red-C\_F  
5-AAGCCCGTGCAGCTGCCCGGG-3'

KB\_3500\_POP7\_BDTV3.mob  
Pis 1358 to 13198 PK1 Loc:1335  
Version 6.0 HISQV Bases: 1011



S/N G:374 A:401 T:243 C:249

D05982A2\_A8km\_2\_Red-C\_F

Nov 30, 2018 02:18PM, JST

KB.bcp

KB\_3500\_POP7\_BDTv3.mob

Nov 30, 2018 02:46PM, JST

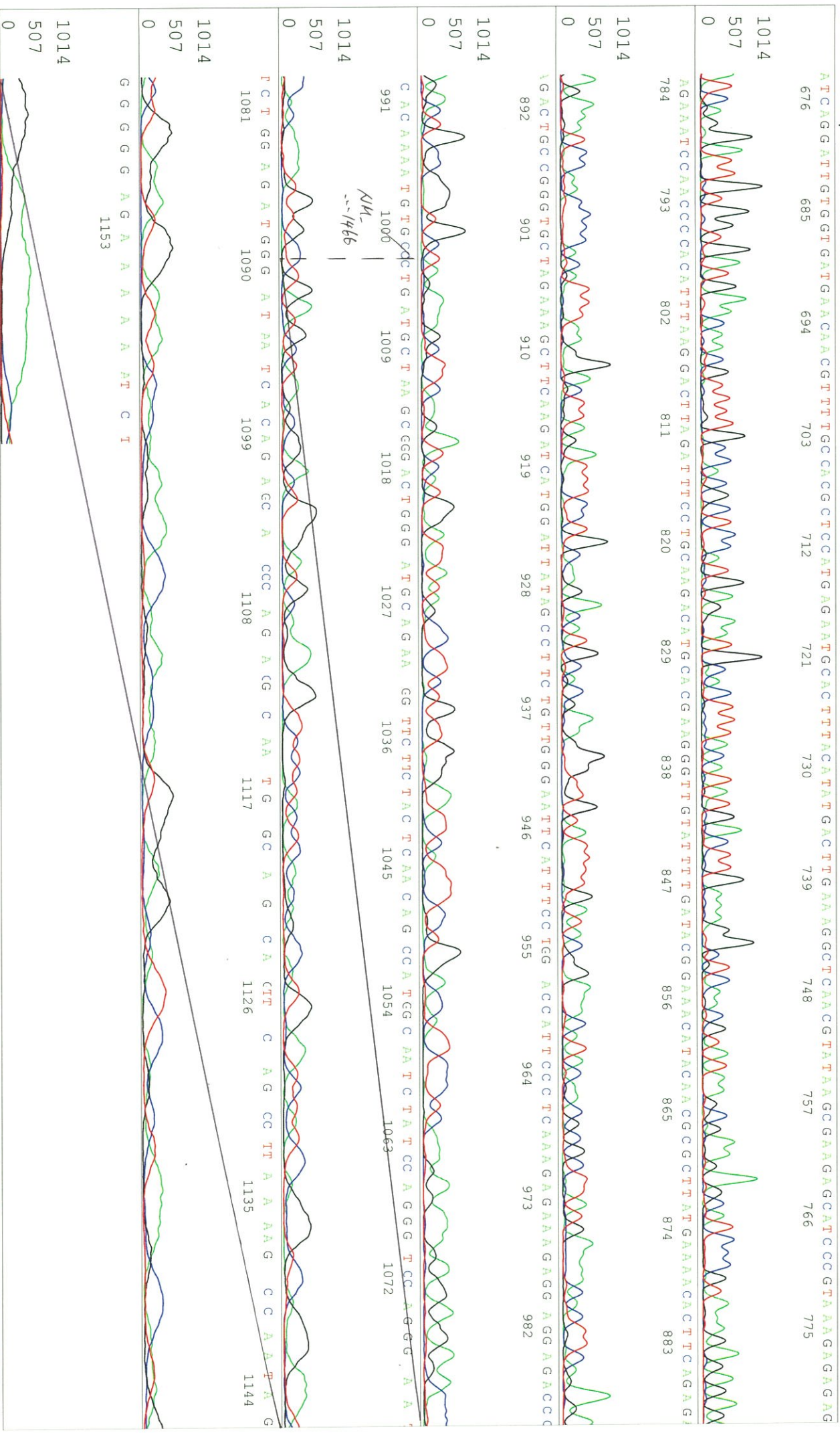
KB 1.4.1.8 Cap:20

Pis 1358 to 13198 Pk1 Loc:1335

Spacing:11.81 Pts/Panel1350

Version 6.0 HISQV Bases: 1011

Plate Name: 20181130ktaku



SN G:40 A:29 T:25 C:29

primer name B : f1ori\_F

D05982A2\_A8Km\_2\_f1ori\_F  
KB\_3500\_POP7\_BDTV3.mob

Dec 05, 2018 10:10AM, JST  
Dec 05, 2018 10:37AM, JST

KB bcp

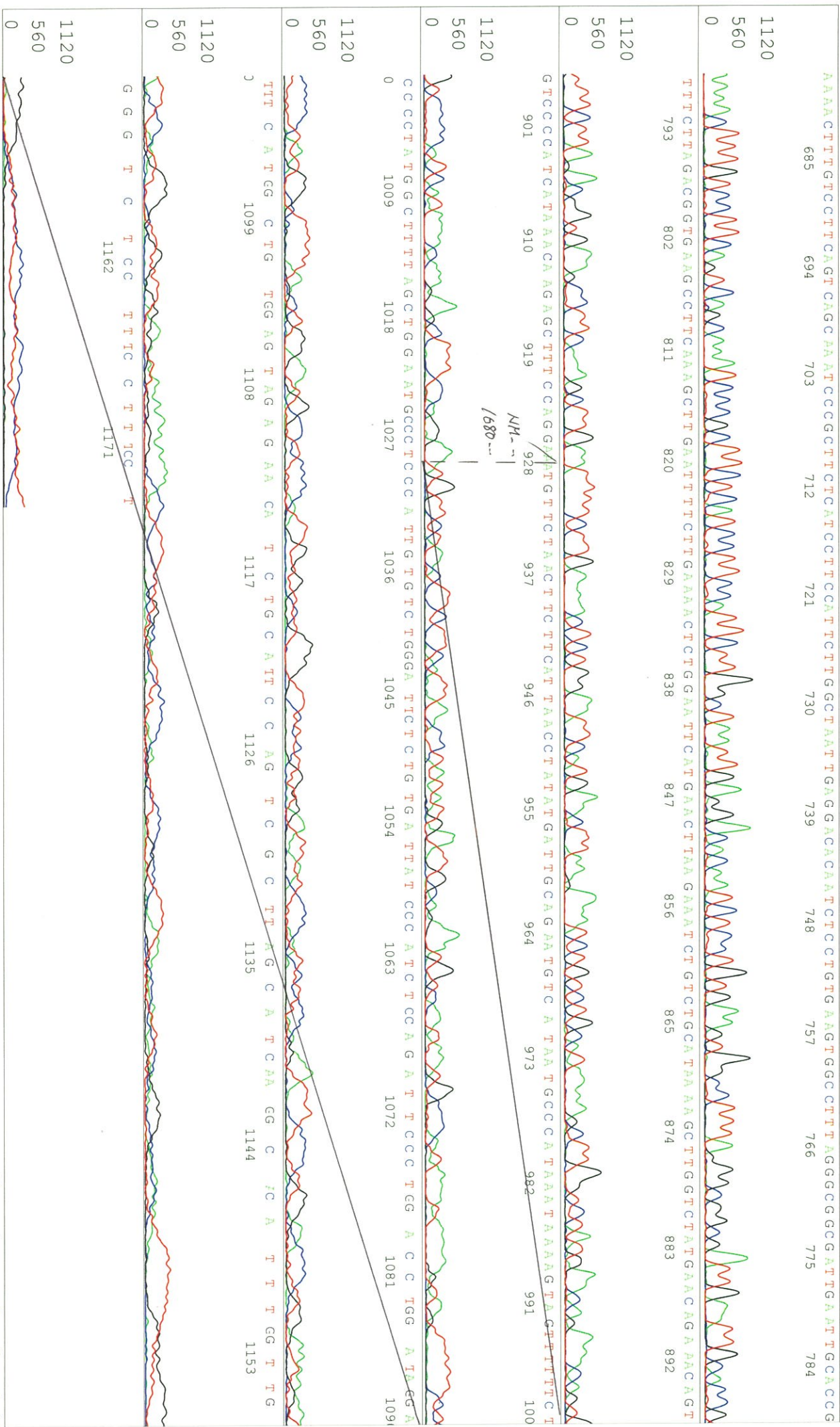
KB 1.4.1.8 Cap:2

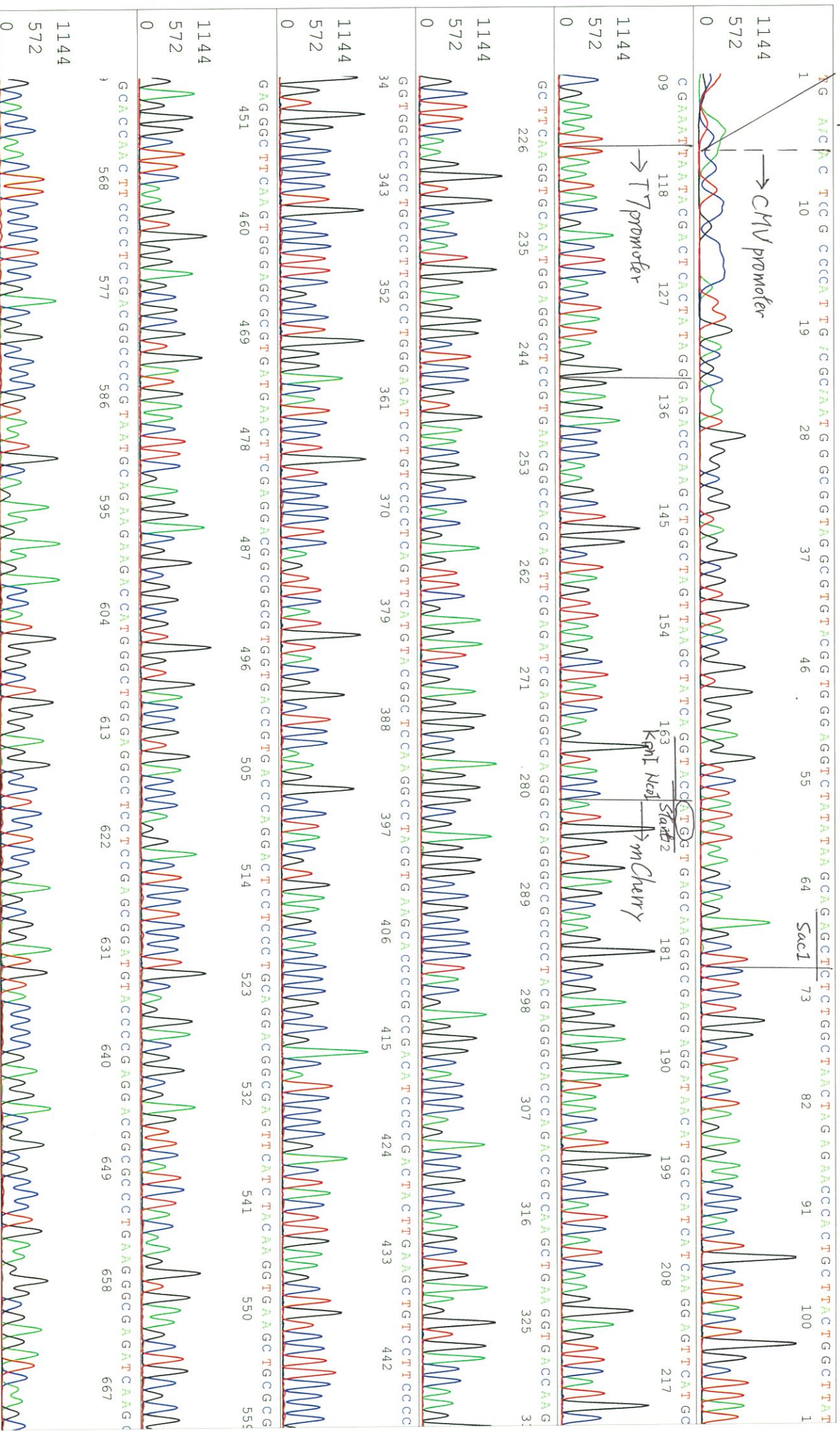
5'-AGAAAAGGAAAGGAAAGAAAGC-3'

Pis 1398 to 13782 PK1 Loc:1375  
Version 6.0 HISQV Bases: 1024

Spacing:12.55 Pts/Panel:350  
Plate Name: 20181205\_kitaku







S/N G:395 A:334 T:171 C:280

D05982A2\_A8Km\_2\_CMV\_Forward

Nov 30, 2018 02:18PM, JST

KB.bcp

KB\_3500\_POP7\_BDTv3.mob

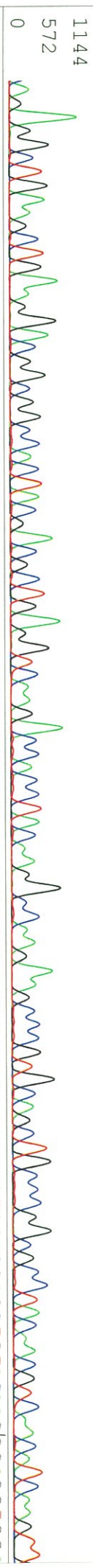
Nov 30, 2018 02:46PM, JST

KB 1.4.1.8 Cap:14

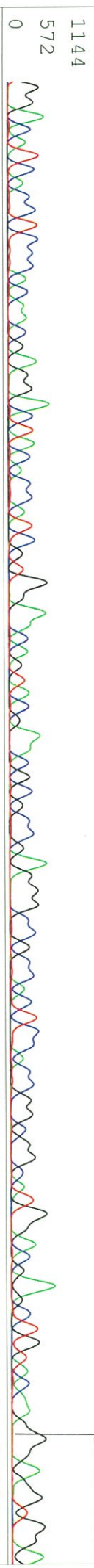
Pis 1360 to 13199 Pk1 Loc:1337

Spacing:1.85 Pts/Panel1350

1A G A G G C T G A A G C T G A A G G A C G G C C G G C C A C T A C C G A C G C C T G A G T C A A G A C C C A C C T A C A A G G C C A A G A A G C C C C G T G C A G C T G C C C C G G C C T A C A A G T C A A C A T C A A G T T

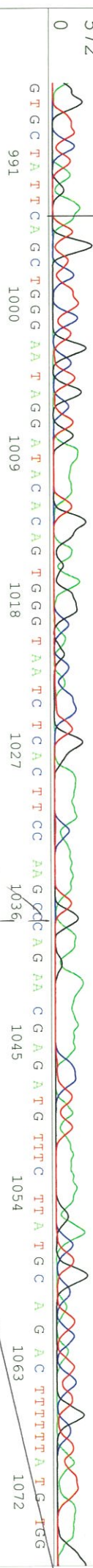


G G A C A T C A C C T C C C A C A A C G A G G A C T A C C C A T C G T G G A A C A G T A C G A A C G C G C C G A G G G C C C C A C T C C A C C G G C G G C A T G G A C G A G C T G T A C A A G G A G G T G A

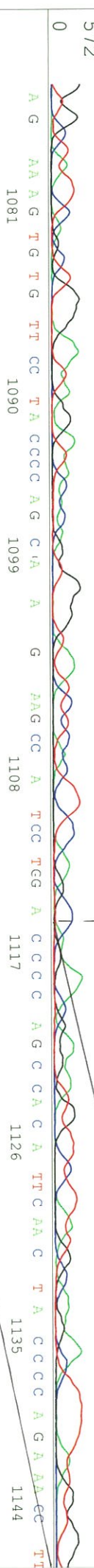


G G T T C T A G A A T G T C T T C T G C T G C T G A A A A T G G A G A G C A G C C T G G A A A A C A A A A T G A A G A A A A A C C T A T A A A A A G A C T G C A T C T G C T A T T A A A G

PIP5K1B, NM\_003558.3 (592...734)



NM\_...734



S/N G:310 A:214 T:154 C:198

primer name D : SV40pro\_F

KB\_3500\_POP7\_BDTv3.mob

Nov 30, 2018 02:18PM, JST

KB.bcp

5'-TATTATGACAGAGGCCGAGG-3'

Pis 1344 to 13376 Pk1 Loc:1321

Nov 30, 2018 02:46PM, JST

KB 1.4.1.8 Cap:23

SV40 pro/pr:

Version 6.0 HISQV Bases: 950

Spacing: 12.19 Pts/Panel1350

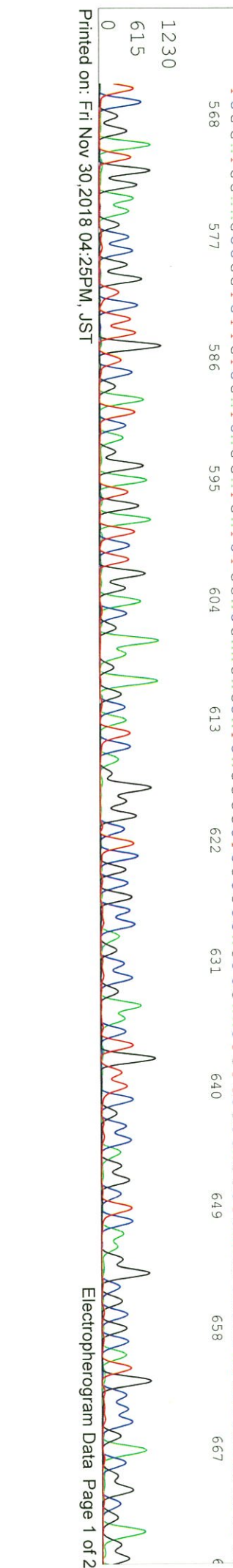
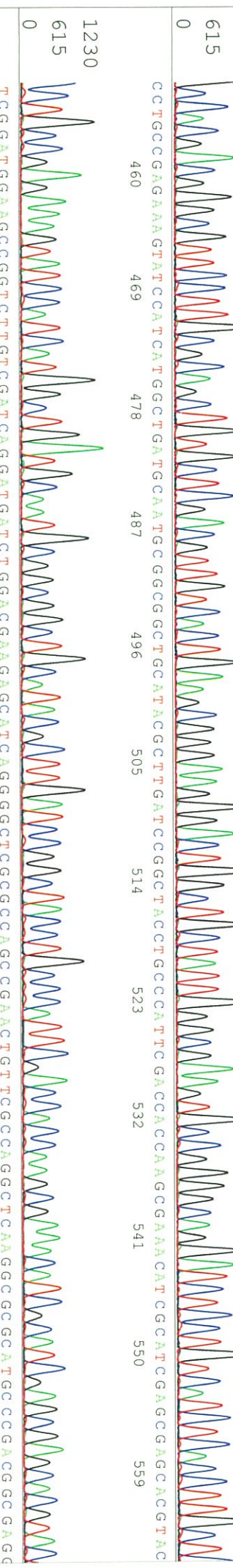
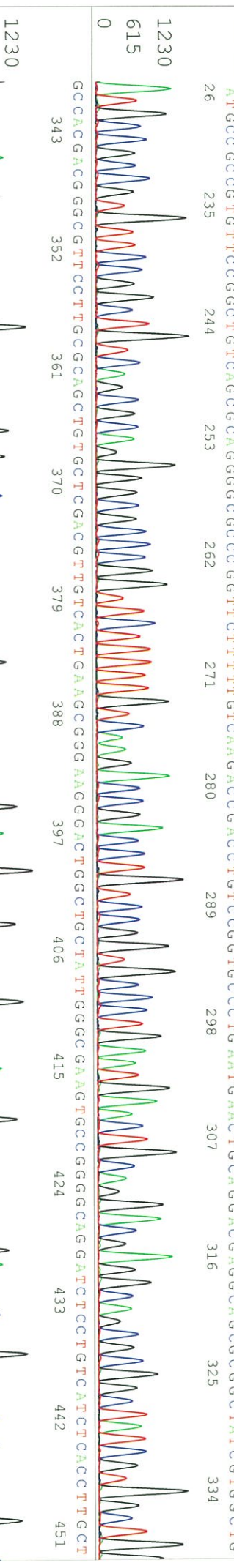
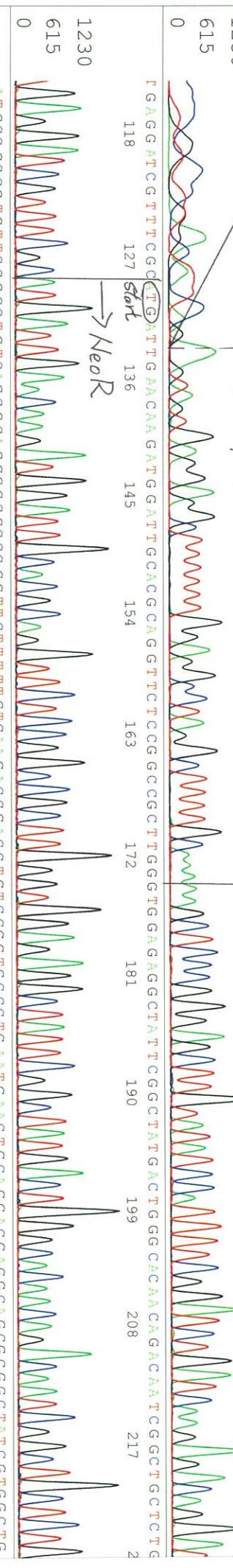
1230

→ SV40 pro/pr:

Smal

73

Plate Name: 20181130kitaku





S/N G:310 A:214 T:154 C:198

D05982A2\_A8Km\_2\_SV40pro\_F

Nov 30, 2018 02:18PM, JST

KB.bcp

KB\_3500\_POP7\_BDTV3.mob

Nov 30, 2018 02:46PM, JST

KB 1.4.1.8 Cap:23

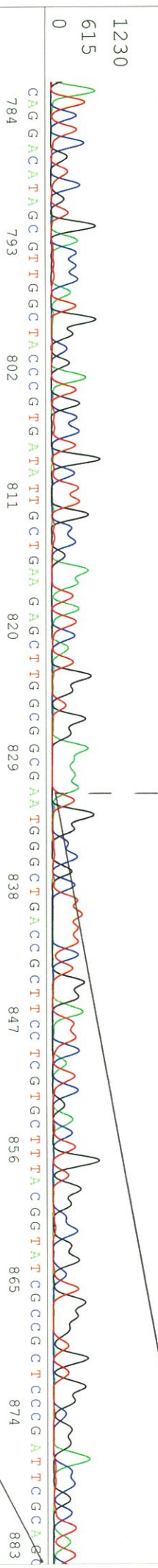
Pts 1344 to 13376 Pk1 Loc:1321

Spacing:12.19 Pts/Panel1350

Version 6.0 HiSQV Bases: 950

Plate Name: 20181130kltaku

ATCTCGTCTGTGACCCATGCGCGATGCGCTGCTTGC CGAATATCATGGTGGGA AATTGGCCGCCCTTTCTCTGG ATTCATCGA CTTGTGCCCGCTGGG TGTGGCCGACCGCTAT



CAGGACATTAGCGTGTGGCTTACCCCGTGTATTTGGCTGAA GAGCTTGGCGGCCGAA TGGGCTGACCGCTTCC TCGTGC TTTATCGGGTATCGCCGCTCCCGATTCCGCAAT

GCAATCCGCC TTTCTATCGCC TTTCTTGACCGAG TTTCTTC TGA GCGGGAC TCTGGGG TTTCCGG AAA TGA CC GA CC AA GCGACG CCCC AA CCTGCCATCA C

3AGATTTTCGATTC CCA CCG CGC TTTCTATGAA GTTGGGC TTTCCGG ATCG TTTTTC CEGG ACG CGGC TGA ATGATCCCTC

A/G CCGGG ATCTCA TGGCC TGGAA G TCTCTCC TACTC TCGG TTTAA CTTGG TGA CCAG TGGCC AAG TGTG CCA G C T A

