

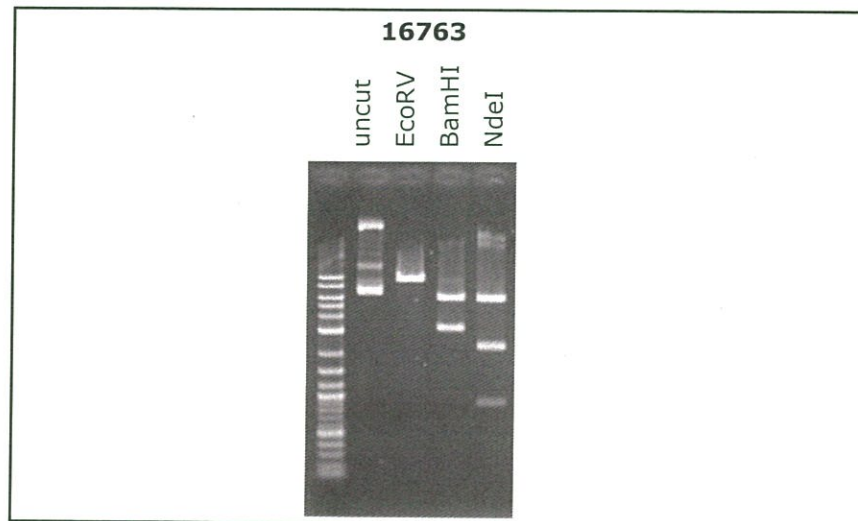
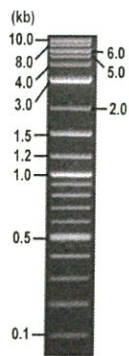


**RIKEN DNA BANK**

clone name : pGedit

- Clone ID : RDB\_16763
- Lot : 16763\_A8Kk
- DNA Concentration : 25 nanogram/microliter
- Volume : 40 microliter
- Form : DNA solution in TE buffer
- Host : DH5 alpha
- Culture : LB medium
- Antibiotics : 100 microgram/ml Ampicillin
- Purification : QIAGEN QIAprep Spin Miniprep kit
- Digestion by restriction enzyme

1 kb Plus DNA Ladder  
(NEB#N3200L),  
250 ng/well



Electrophoresis : 100 nanogram DNA per lane ; 1% agarose gel , 1 x TAE Buffer

Restriction enzyme	Expected size of fragment
<b>EcoRV</b>	<b>9.3</b> kbp
<b>BamHI</b>	<b>6.0, 3.2</b> kbp
<b>NdeI</b>	<b>6.0, 2.3, 0.9</b> kbp
	kbp

● Confirmation of the insertion sequence

Please be sure to check our sequence analysis results before your request.

Sequence name	Primer ID	Primer name	Confirmed feature
Sequence - A	Pr0410	M13_-40	T7 pro,U6 pro,gRDA scaffold,T3 pro
Sequence - B	Pr0016	CMV_Forward	CMV pro,Cas9 5'
Sequence - C	Pr0027	EGFP-N	T2A,SV40 NLS,Cas9 3'
Sequence - D	Pr0059	pAxEF R2	SV40 pA,Bsr,EGFP 3'
Sequence - E	Pr0008	Amp_R	CMV pro,Cas9 5'
Sequence - F	Pr0920	FP-N_F1	EGFP 3',Bsr 5'
Sequence - G	Pr0743	EGFP-M_R	EGFP 5',T2A,SV40 NLS,Cas9 3'
Sequence - H	-	-	-

APPROVED BY :

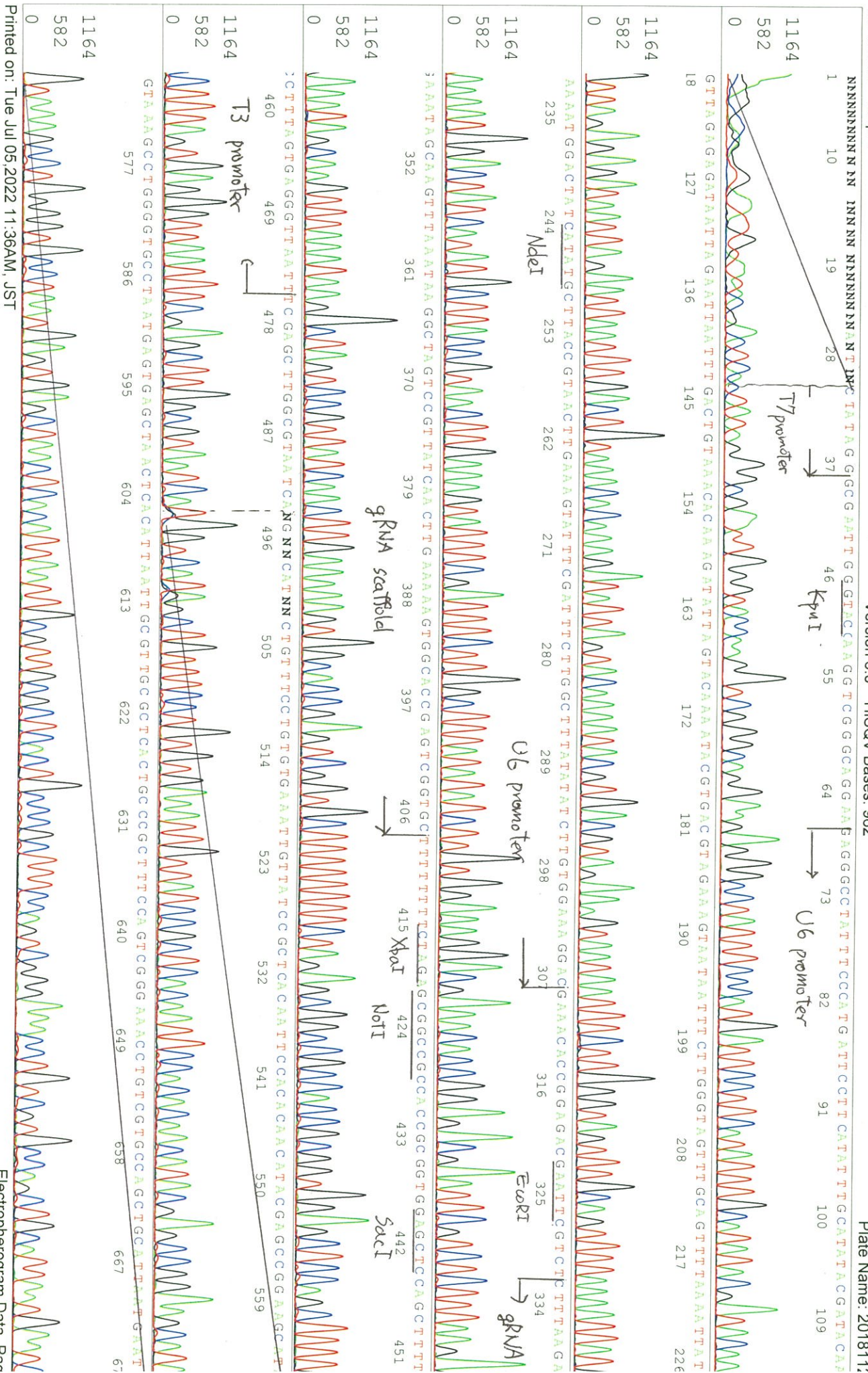


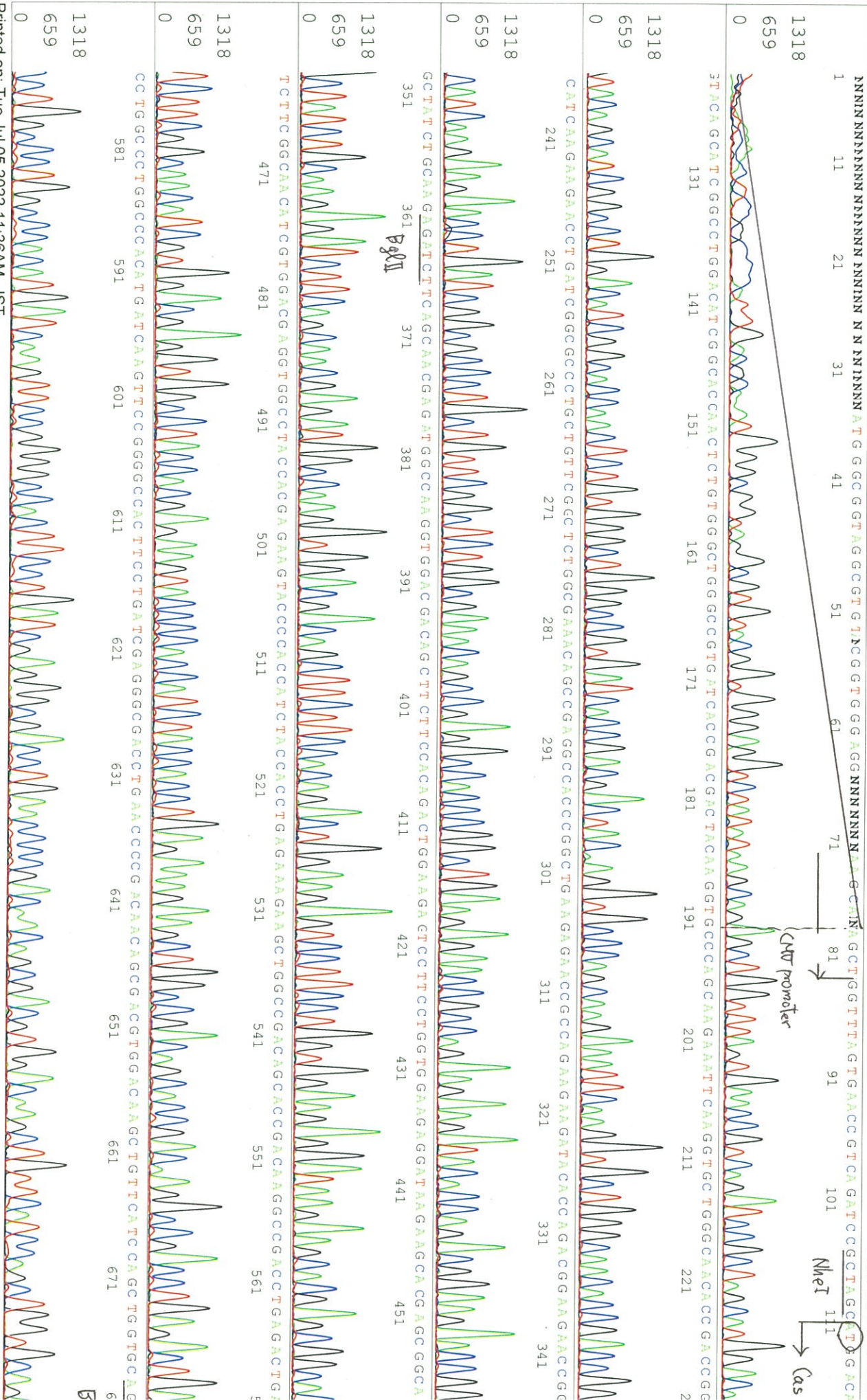
S/N G:29 A:42 T:46 C:53  
KB.bcp  
KB 1.4.1.8 Cap.1

primer name A :M13\_40  
5'GTTTCCAGTCACGACGTTGTA3'

D05970A1\_A8Kk\_2\_M13\_40  
KB\_3500\_POP7\_BDV3.mob  
Pfs 1403 to 13943 PK1 Loc:1380  
Version 6.0 HISQV Bases: 962

Nov 28, 2018 09:47  
Nov 28, 2018 10:14  
Spacing: 12.61 Pfs/Pe  
Plate Name: 2018112





S/N G:16 A:21 T:16 C:26

D05970A1\_A8Kk\_2\_CMV\_Forward

KB\_3500\_POP7\_BDTV3.mob

Pls 1403 to 13773 Pk1 Loc:1380

Version 6.0 HISQV Bases: 932

Nov 28, 2018 09:47

Nov 28, 2018 10:14

Spacing: 12.46 Pts/P:

Plate Name: 201811

KB.bcp

KB 1.4.1.8 Cap:2

Nov 28, 2018 09:47

Nov 28, 2018 10:14

Spacing: 12.46 Pts/P:

Plate Name: 201811

ACAATCA GCTGTTCCGAGGAAACCCCA TCAA C G C C C A G C A G A G T G G A C G C C C A T T C C T G A G C G C C C N N A C T G A G C A A G A G C C A G A C C G G C C T G G A A A A T C T G A T C G

Cas 9

CTGCCCGGCGGAGAA GCG GAATG G C C T G T N C C G C C N C C T G A T T G C C C T G A N C C T T G G G C C N G A N C C C C A A C T T C N N N A G C A A C T T C N N N N T G N N N G A N G A N G C C N

CAGCTGAN C N N G G A C A C C T A C G A C G A N N A C C T G N N N N N C T G C T G G C C C N N A T C N G N N G A N C A N N A C N N C G A C C T G T T C N N G N C N N C N A G A A N C N T G T

NN N N N N N C N N A N C N N C N T N C N N N A N N N N N N N C N N N T N N N C N A N N N C C C N C N N N N N N N N C N N N N N N C N N N N N N N N N N N N N N N N N N N

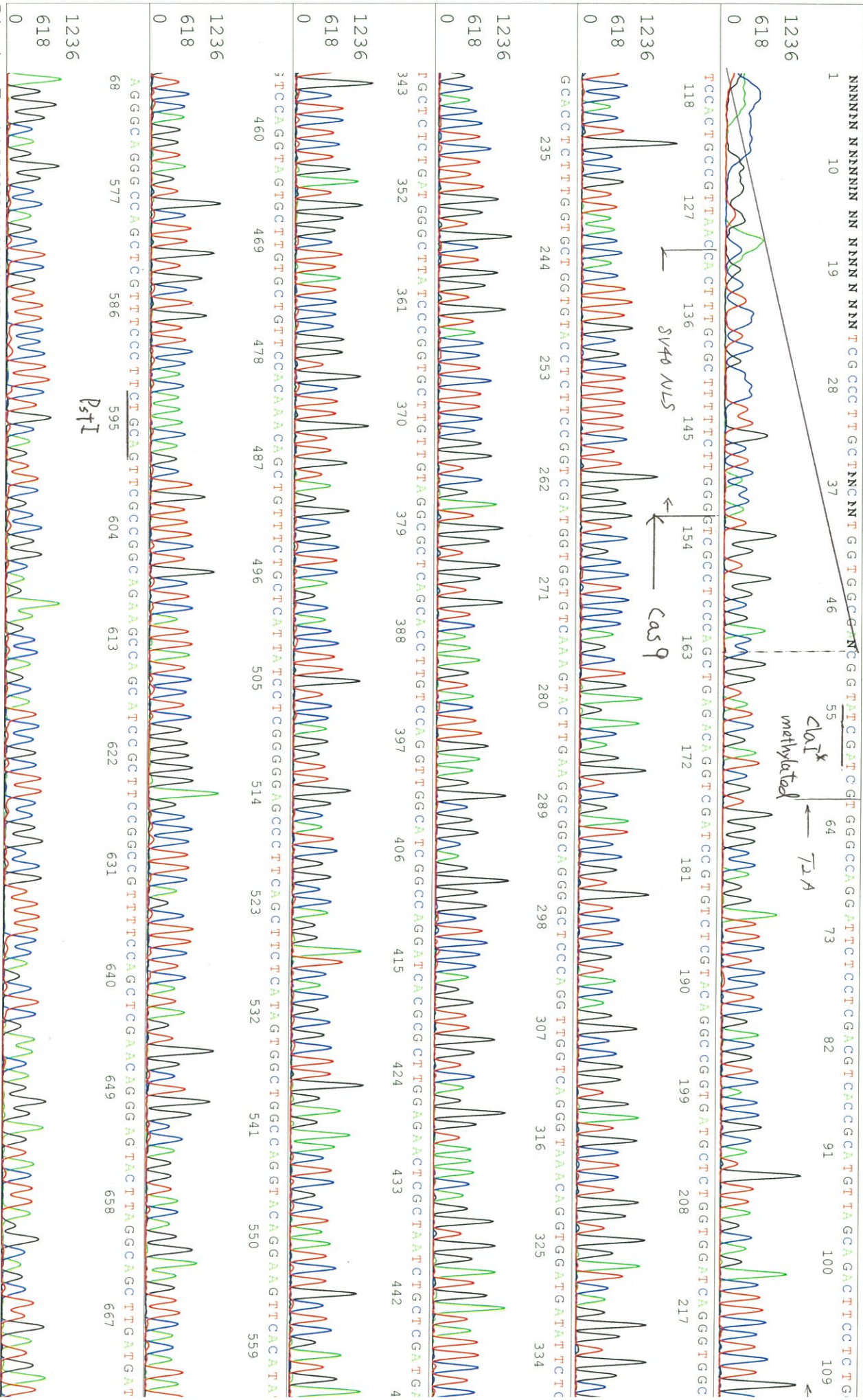
NN N

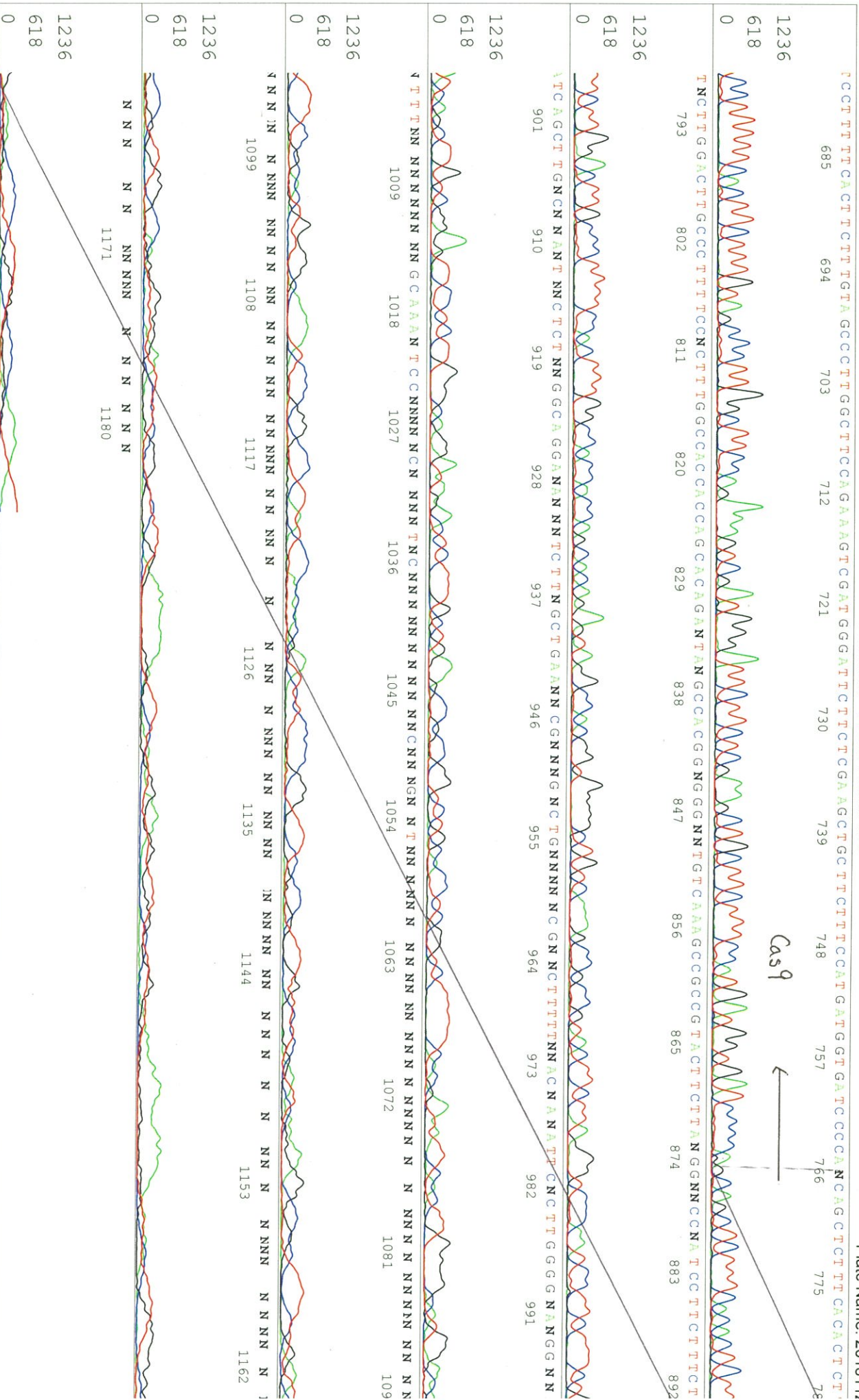
NN N

NN N

Printed on: Tue Jul 05, 2022 11:36AM, JST

Electropherogram Data Pac

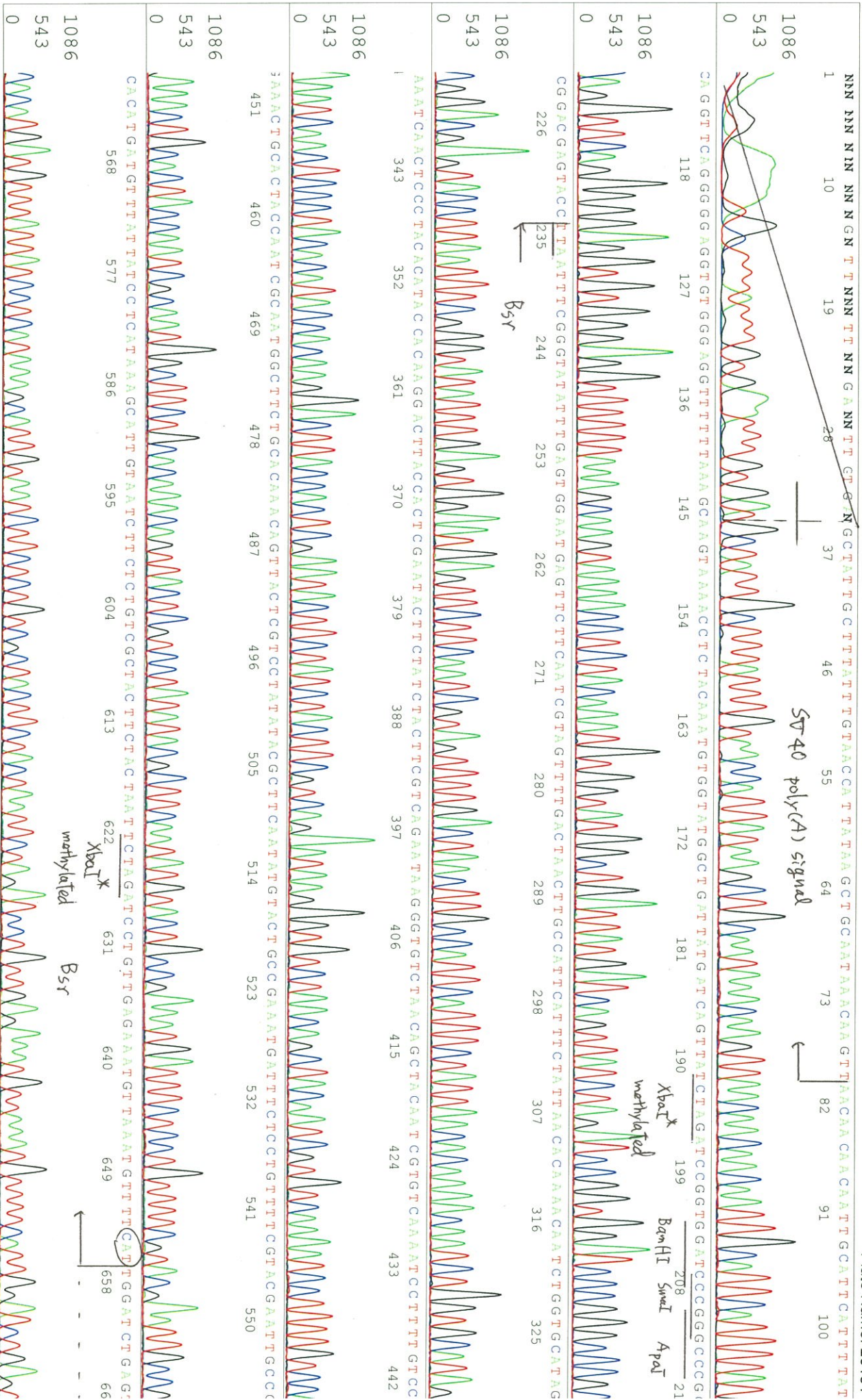




S/N G:167 A:247 T:282 C:319 primer name **p** : PAXEF R2  
KB.bcp KB\_3500\_POP7\_BDTV3.mob  
KB 1.4.1.8 Cap:12 5' GATGAGTTTGACCAACCAC 3'

D05970A1\_A8Kk\_2\_pAXEF-R2  
KB\_3500\_POP7\_BDTV3.mob  
Pis 1410 to 13573 Pl1 Loc:1387  
Version 6.0 HISQV Bases: 975

Nov 29, 2018 02:05F  
Nov 29, 2018 02:47F  
Spacing: 12.04 Pis/Pa  
Plate Name: 20181



S/N G:167 A:247 T:282 C:319

D05970A1\_A8Kk\_2\_pAXEF-R2

Nov 29, 2018 02:05i

KB.bcp

KB\_3500\_POP7\_BDTV3.mob

Nov 29, 2018 02:47i

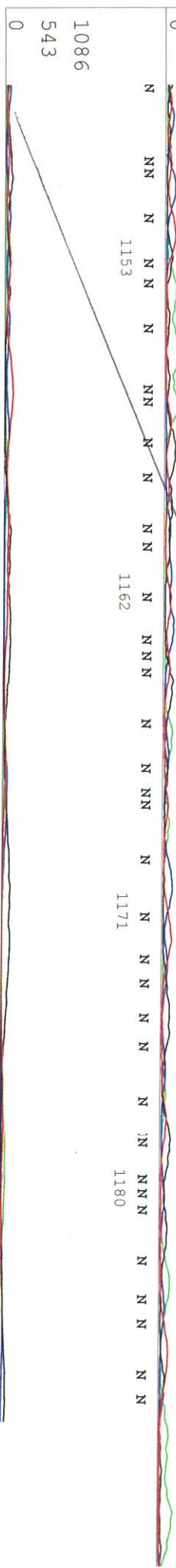
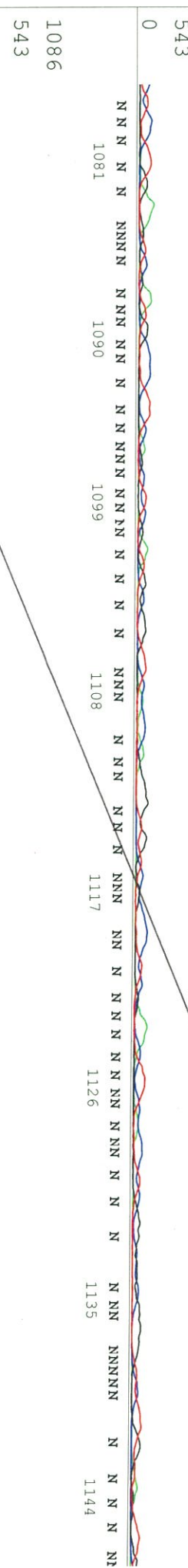
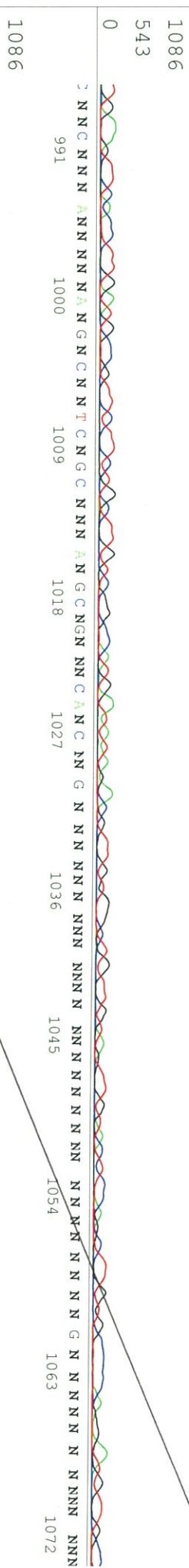
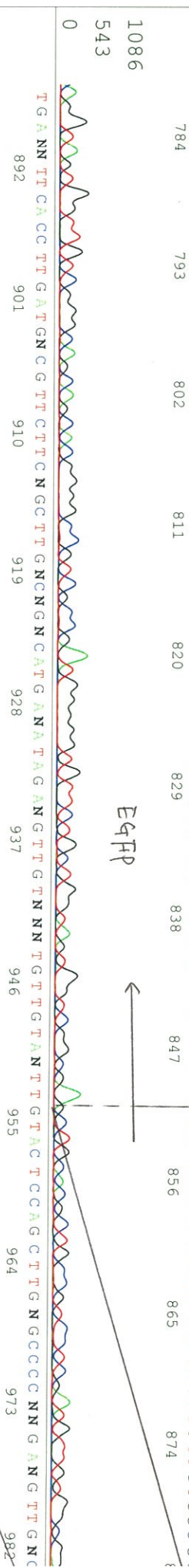
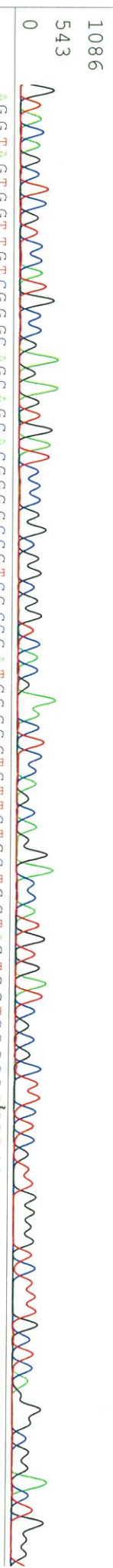
KB 1.4.1.8 Cap:12

Pls 1410 to 13573 PK1 Loc:1387

Spacing: 12.04 Pls/Pa

Version 6.0 HISQV Bases: 975

Plate Name: 20181



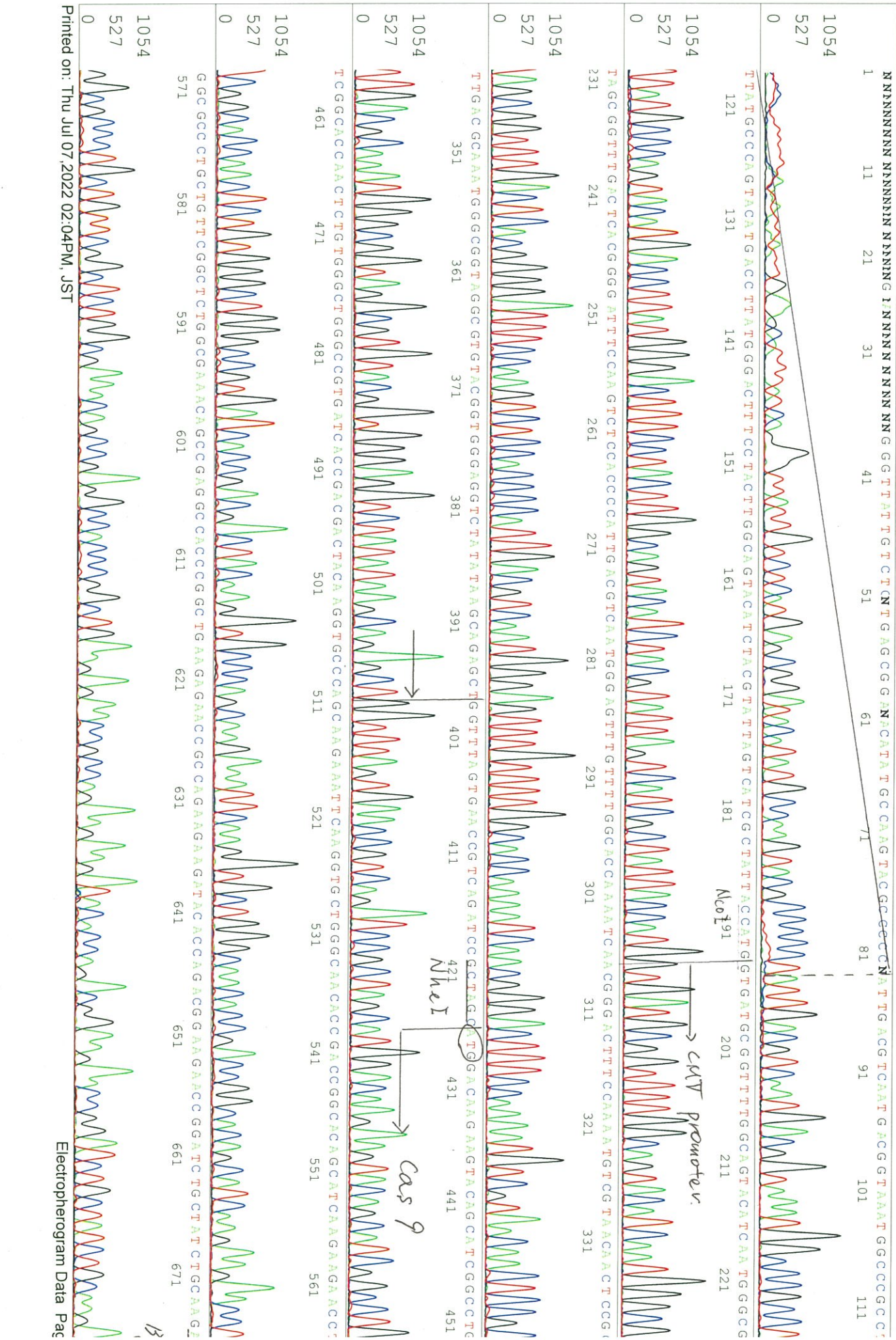


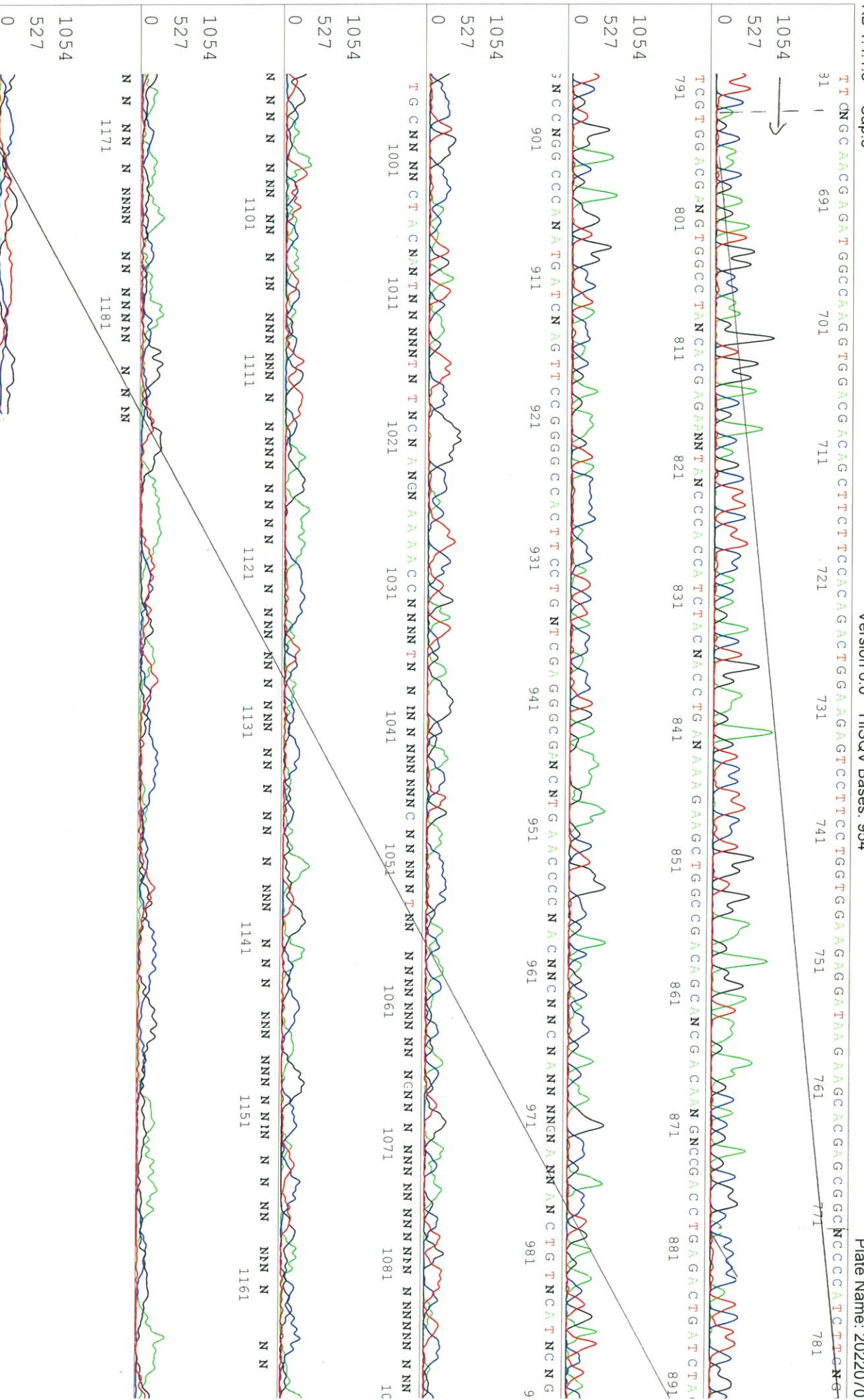
S/N G:38 A:32 T:30 C:33  
KB bcp  
KB 1.4.1.8 Cap:3

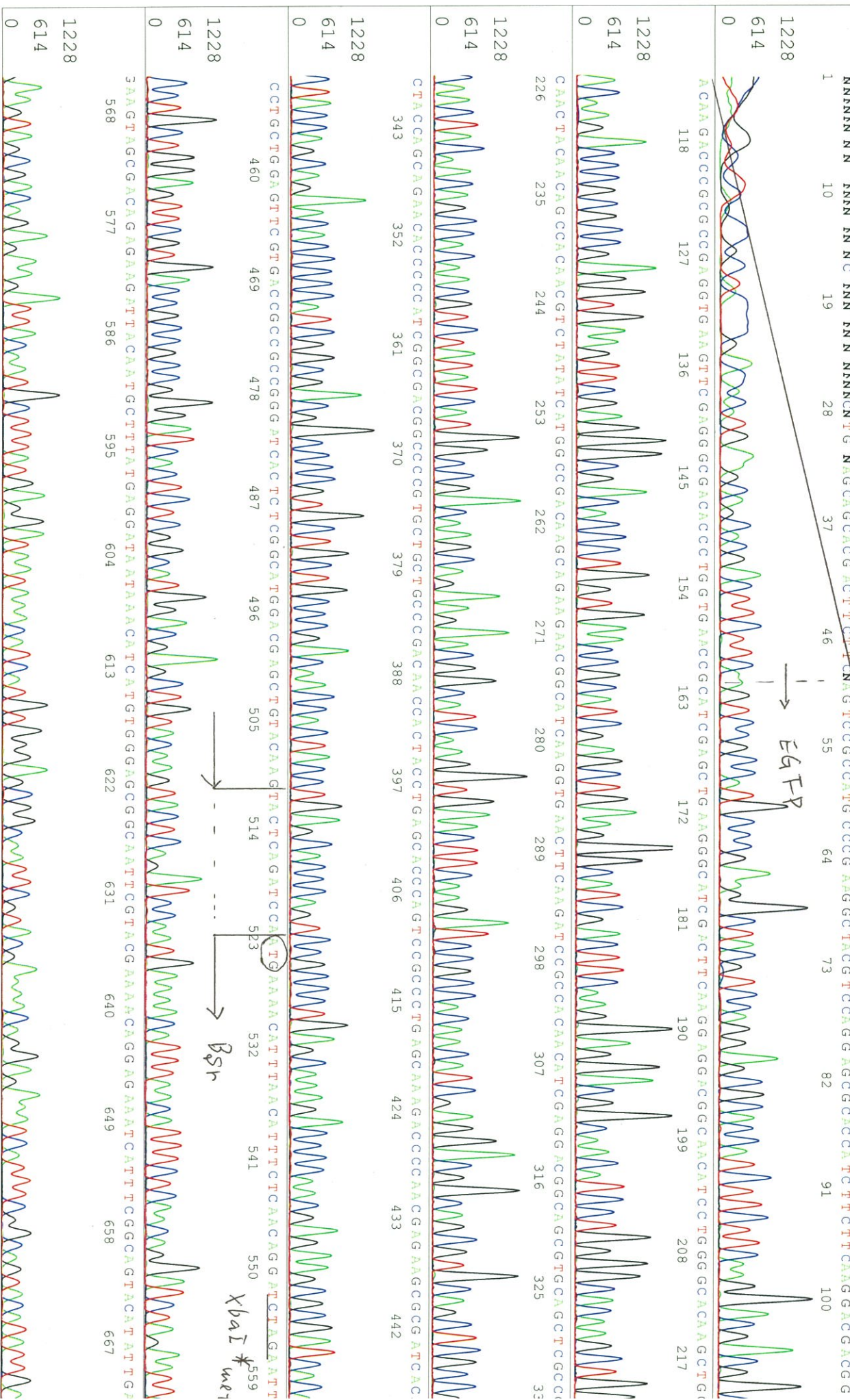
primer name *E* : Amp\_R  
5'-GCCGACCGGAAATGTTGAATA-3'

16763\_16763\_B2G6F\_Amp\_R\_A06\_03\_AB124  
16763\_16763\_B2G6F\_Amp\_R  
KB\_3500\_POP7\_BDTV3.mob  
Pis 1475 to 13047 Pk1 Loc:1452  
Version 6.0 HiSQV Bases: 954

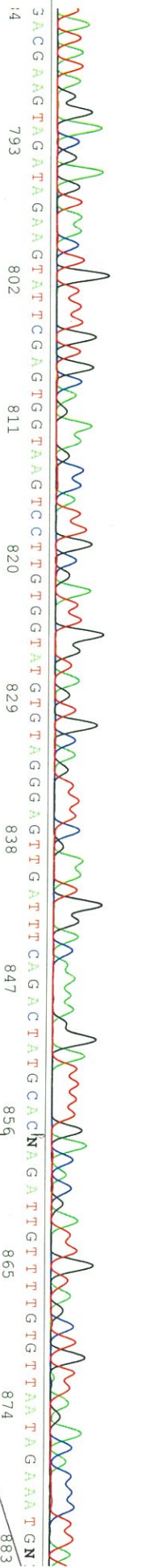
Inst Model/Name 3500/3500 Ins  
Jul 07, 2022 11:47  
Jul 07, 2022 12:24  
Spacing: 11.63 Pfs/Pa  
Plate Name: 2022070



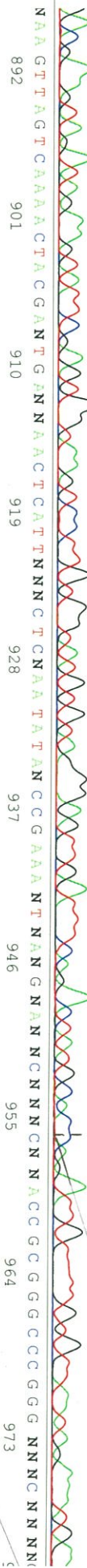




TATTAGGACGAGTAACTGTTTGTCCAGAAACCATTGGCGATTGGTAGTGCCAGTTTCCGAATGGACAAAGGATTTTGAACAAGATTGTTAGCTGTTAGACACCTTA



3ACGAAAGTAGATAAGAAATATTCGAGTGGTAAGTCCCTTGTTGTTATGTTAGGAGTTGATTTCAAGACTATGCACNAAGATTGTTTGTGTTAAAGAAATGN



NAA GTTAGTCAAACCTAAGANTGANNAACTCATTTNNNC TCNAA TATAN CCGAAA NTNANGNANNCNNAACCGCGCGCCGGG NNNC NNN

CNAGANNCTGNTNANNANTCNGCCNNNNNNNNNTN NNCNNTTNNNNNNNTNNAAAANN NN N NNNNN N NNNNNNN NNN

INN NNNNN N

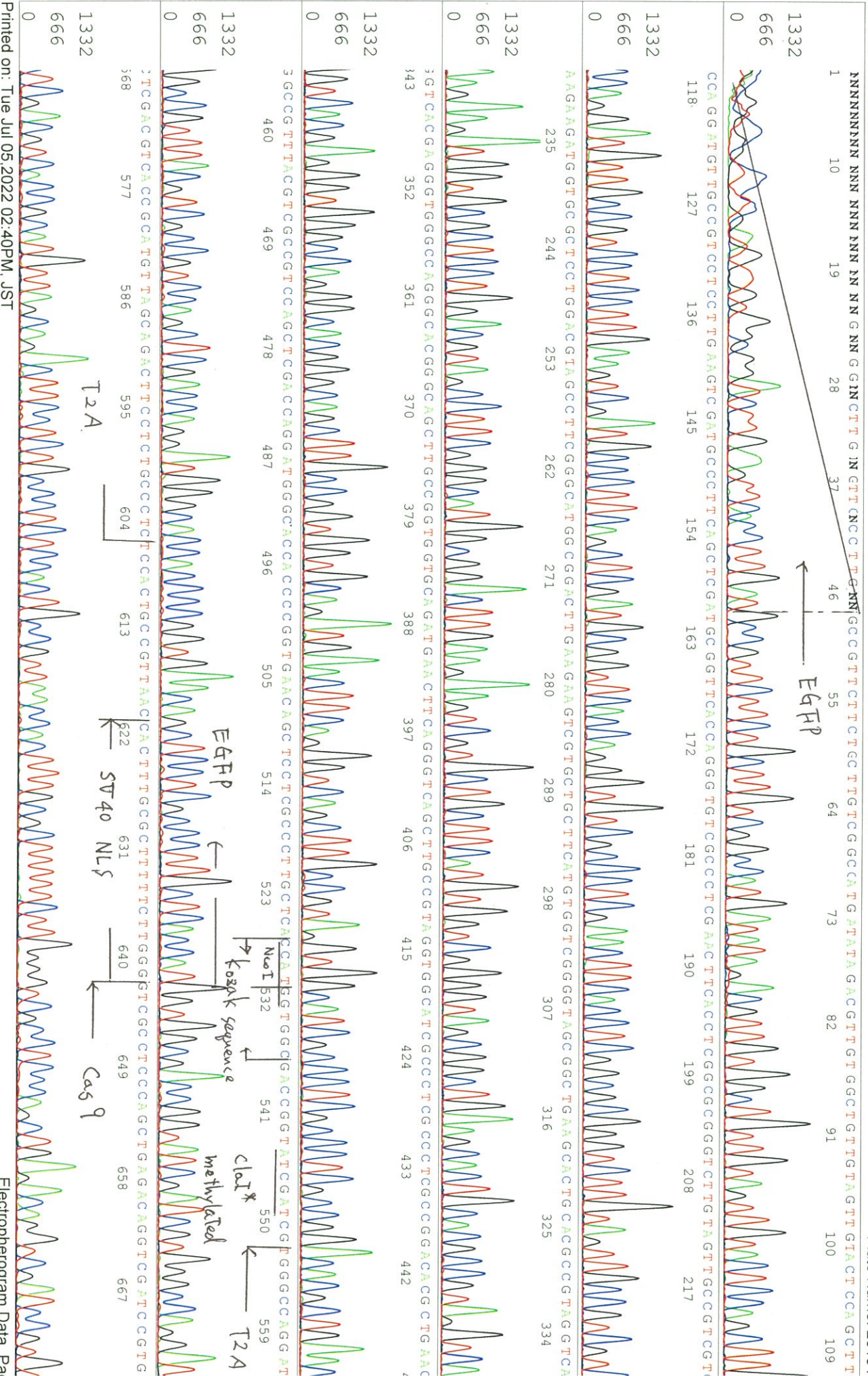


S/N:G:37 A:20 T:21 C:28  
 KB:bbp  
 KB 1.4.1.8 Cap:6

primer name **EGFP-M\_R**  
 5' TGTTCGCTGCTAGTGTGCG3'

D05970A1\_A8Kk\_2\_EGFP-M\_R  
 KB\_3500\_POP7\_BDTV3.mob  
 Pts 1362 to 13356 Pk1 Loc:1339  
 Version 6.0 HISQV Bases: 957

Nov 13, 2019 01:45  
 Nov 13, 2019 02:12  
 Spacing: 11.94 Pts/Pz  
 Plate Name: 20191



S/N G:37 A:20 T:21 C:28

D05970A1\_A8Kk\_2\_EGFP-M\_R  
KB\_3500\_POP7\_BDTV3.mob

Nov 13, 2019 01:45  
Nov 13, 2019 02:12

KB.bcp  
KB 1.4.1.8 Cap.6

Pts 1362 to 13356 PK1 Loc:1339  
Version 6.0 HISQV Bases: 957

Spacing: 11.94 Pts/Pc  
Plate Name: 20191

