



RIKEN DNA BANK

host name : ML3

- Clone ID : RDB_15928
- Lot : 15928_A8Ea
- Form : Recombinant in Stab agar
- Culture : 37C, LB + Kanamycin
Use appropriate media when using for experiments.

● Primers Please refer to depositor's primer list (PMID:26577727, Table 4) for primer sequences.

Primer A	:	hisG.ext.F	(Pr 690)	Primer K	:	-	-
Primer B	:	hisG.ext.R	(Pr 691)	Primer L	:	-	-
Primer C	:	-	-	Primer M	:	-	-
Primer D	:	-	-	Primer N	:	-	-
Primer E	:	-	-	Primer O	:	-	-
Primer F	:	-	-	Primer P	:	-	-
Primer G	:	-	-	Primer Q	:	-	-
Primer H	:	-	-	Primer R	:	-	-
Primer I	:	-	-	Primer S	:	-	-
Primer J	:	-	-	Primer T	:	-	-

● PCR Amplification The lane to which the 250ng/well 1kb Plus Ladder (NEB#N3200) marker is applied is indicated as (M).

15928

Lane No. (M) (1) (2) (M)

<Condition and Reaction program>

template : genomic DNA 1 µL

Enzyme : AmpliTaq Gold® 360 DNA Polymerase (Thermo Fisher)

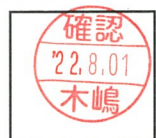
total volume : 10 µL

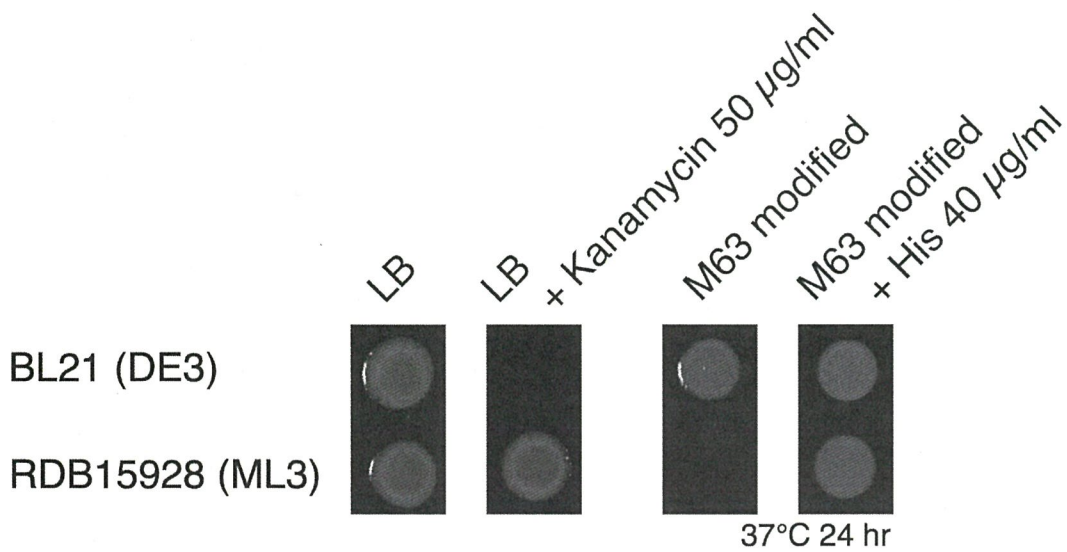
96 deg C	2 min	}	x 35 cycles
96 deg C	15 sec		
55 deg C	15 sec		
72 deg C	3 min		
72 deg C	5 min		
4 deg C	∞		

◆ Lane number and size of fragment BL21(DE3) has used as a control.

Confirmed deletion		hisG	-	-	-	-
Template		Primer A + B	-	-	-	-
host	RDB15928	(1), 1.5 kb	-	-	-	-
	BL21(DE3)	(2), 2.4 kb	-	-	-	-
Confirmed deletion		-	-	-	-	-
Template		-	-	-	-	-
host	RDB15928	-	-	-	-	-
	BL21(DE3)	-	-	-	-	-

APPROVED BY :





OD600 ≈ 0.1 culture x 5 µL spot

M63 modified medium:

3 g/L KH_2PO_4 , 7 g/L K_2HPO_4 , 2 g/L Glucose, 2 g/L NH_4Cl ,
 10 mg/L Thiamine, 10 µM CuSO_4 , 30 µM FeSO_4 , 1 mM MgSO_4

