

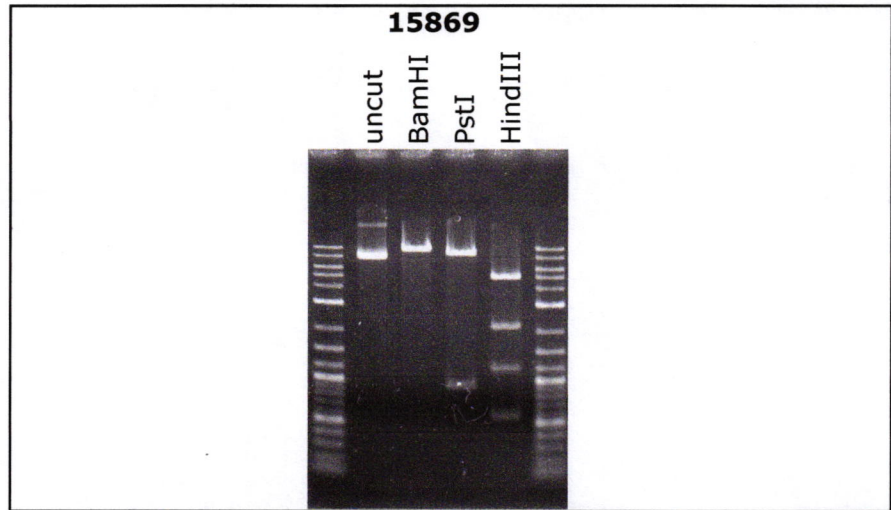
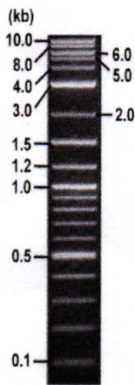


RIKEN DNA BANK

clone name : **pCSII-CMV-MCS_n-GRAPHIC**

- **Clone ID** : RDB_15869
- **Lot** : 15869_A8Cd
- **DNA Concentration** : 25 nanogram/microliter
- **Volume** : 40 microliter
- **Form** : DNA solution in TE buffer
- **Host** : NEB stable
- **Culture** : LB medium
- **Antibiotics** : 100 microgram/ml Ampicillin
- **Purification** : QIAGEN QIAprep Spin Miniprep kit
- **Digestion by restriction enzyme**

1 kb Plus DNA Ladder
(NEB#N3200L),
250 ng/well



Electrophoresis : 100 nanogram DNA per lane ; 1% agarose gel , 1 x TAE Buffer

Restriction enzyme	Expected size of fragment
BamHI	9.5 kbp
PstI	8.6, 0.9 kbp
HindIII	5.0, 2.2, 1.2, 0.6, 0.6 kbp

● **Confirmation of the insertion sequence**

Please be sure to check our sequence analysis results before your request.

Sequence name	Primer ID	Primer name	Confirmed feature
Sequence - A	Pr0905	EGFP-N_R2	insert 5', CMV pro_2
Sequence - B	Pr0250	PRE_rev	WPRE, insert 3'
Sequence - C	Pr0731	SV40pro_ori_F	SV40 pro_ori, BleoR
Sequence - D	Pr0673	HIV-B_R	HIV-1 psi, 5'LTR, CMV pro_1
Sequence - E	Pr0651	RRE-M_R	RRE
Sequence - F	Pr0796	RRE_F1	CPPT_CTS
Sequence - G	Pr0606	BGH_rev2	3' LTR
Sequence - H	-	-	-

APPROVED BY :

