

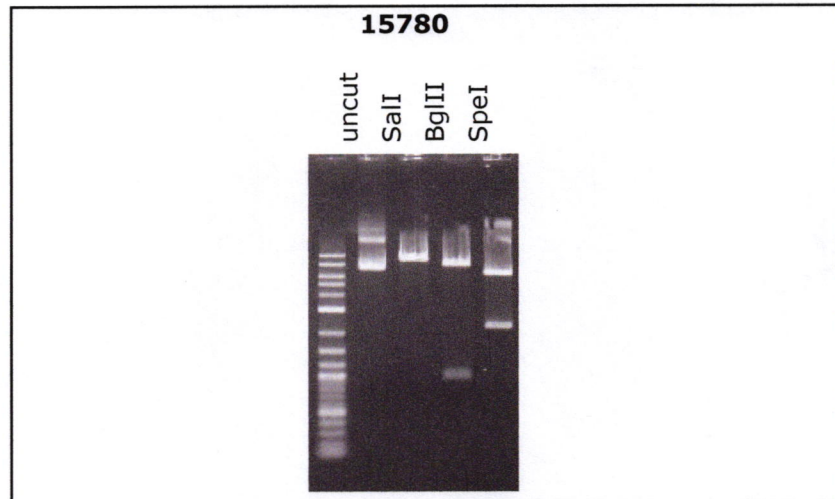
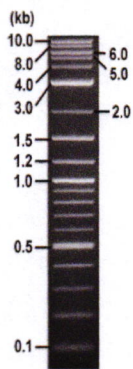


**RIKEN DNA BANK**

clone name : ptol2/cmlc2-mermaid

- Clone ID : RDB \_ 15780
- Lot : 15780 \_ A8D8
- DNA Concentration : 25 nanogram/microliter
- Volume : 40 microliter
- Form : DNA solution in TE buffer
- Host : DH5 alpha
- Culture : LB medium
- Antibiotics : 100 microgram/ml Ampicillin
- Purification : QIAGEN QIAprep Spin Miniprep kit
- Digestion by restriction enzyme

1 kb Plus DNA Ladder  
(NEB#N3200L),  
250 ng/well



Electrophoresis : 100 nanogram DNA per lane ; 1% agarose gel , 1 x TAE Buffer

Restriction enzyme	Expected size of fragment
<b>SalI</b>	<b>9.1</b> kbp
<b>BglII</b>	<b>8.1, 1.0</b> kbp
<b>SpeI</b>	<b>6.8, 2.4</b> kbp
	kbp

● Confirmation of the insertion sequence

Please be sure to check our sequence analysis results before your request.

Sequence name	Primer ID	Primer name	Confirmed feature
Sequence - A	Pr0643	cmlc2pro_F	insert mid(cmlc2 pro,Mermaid 5')
Sequence - B	Pr0645	mKOk-C_F	insert 3'(Mermaid 3' SV40 pA,delta Tol2 ITR )
Sequence - C	Pr0494	mKO2-N_R	insert mid(Mermaid mid)
Sequence - D	Pr0623	SV40polyA_R2	insert mid(Mermaid 3')
Sequence - E	Pr0644	cmlc2pro_R	insert 5'(cmlc2 pro),Tol2 1
Sequence - F	Pr0525	RDB15263#2	insert mid(Mermaid mid)
Sequence - G	Pr1311	mUGK-B_F	insert mid(Mermaid mid)
Sequence - H	-	-	-

APPROVED BY :

