

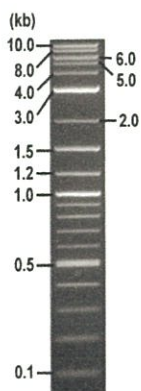


RIKEN DNA BANK

clone name : pCAhL12p40

- Clone ID : RDB_03959
- Lot : 15737_A8Ah
- DNA Concentration : 25 nanogram/microliter
- Volume : 40 microliter
- Form : DNA solution in TE buffer
- Host : DH5 alpha
- Culture : LB medium
- Antibiotics : 100 microgram/ml Ampicillin
- Purification : QIAGEN QIAprep Spin Miniprep kit
- Digestion by restriction enzyme

2-Log DNA Ladder
(NEB#N3200L),
250 ng/well



Electrophoresis : 100 nanogram DNA per lane ; 1% agarose gel , 1 x TAE Buffer

Restriction enzyme	Expected size of fragment	
<u>BglII</u>	: <u>5.8</u>	<u>kbp</u>
<u>BamHI</u>	: <u>5.4, 0.3</u>	<u>kbp</u>
<u>NcoI</u>	: <u>3.2, 2.6</u>	<u>kbp</u>
		<u>kbp</u>
		<u>kbp</u>

● Confirmation of the insertion sequence

Sequence name	Primer name	Sequence name	Primer name
Sequence - A	pCAG-F_V2	Sequence - E	-
Sequence - B	pCA-bgter	Sequence - F	-
Sequence - C	-	Sequence - G	-
Sequence - D	-	Sequence - H	-

APPROVED BY :



S/N G:37 A:35 T:42 C:54

primer name A : pCAG-F_V2

KB_3500_POP7_BDTV3.mob

Jan 22, 2018 10:22AM, JST

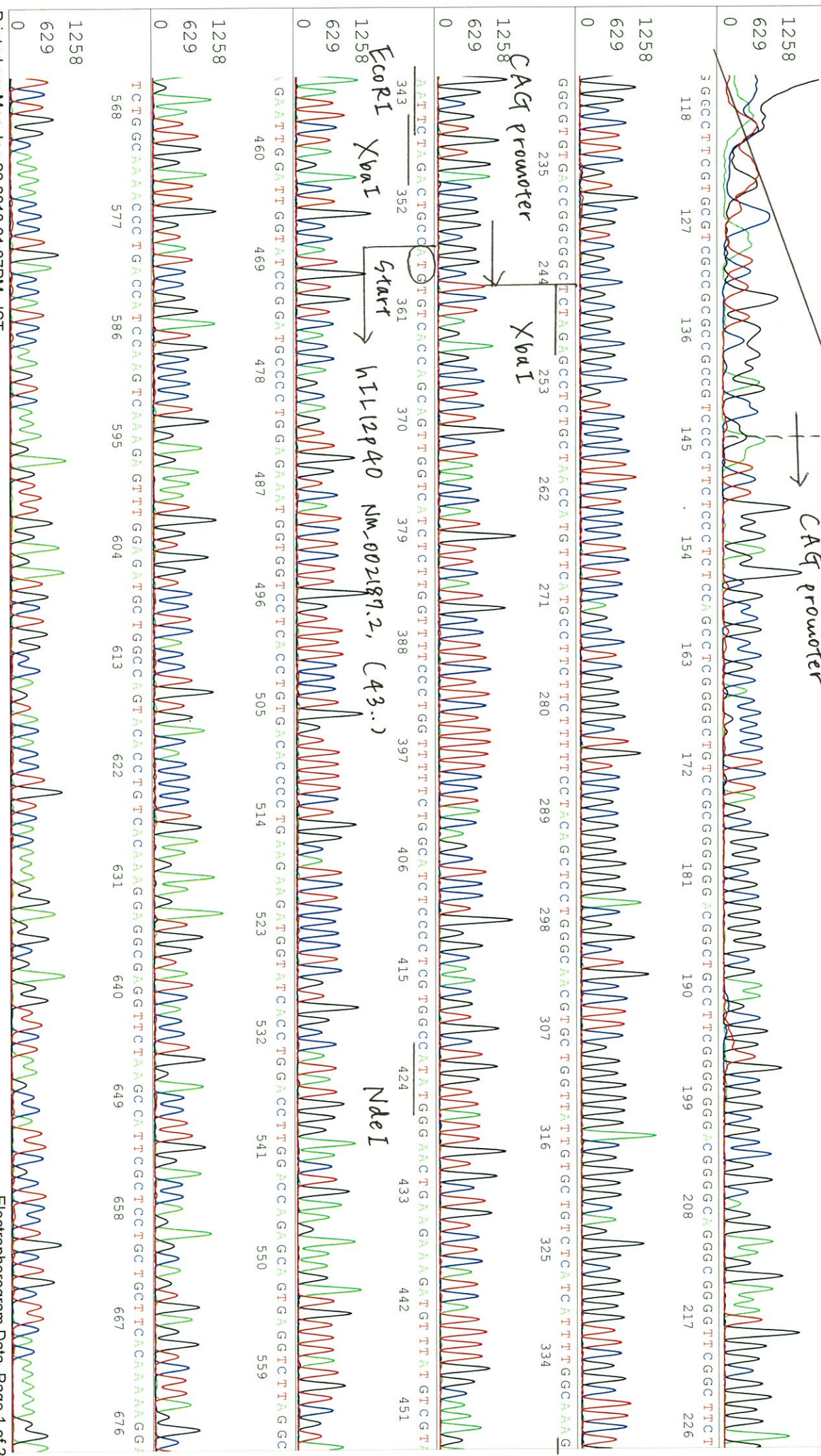
KB 1.4.1.8 Cap:5

5'-ATGGTAATCGTGGAGAGGG-3'

Pls 1446 to 13873 Pk1 Loc: 1423

Jan 22, 2018 11:04AM, JST

Version 6.0 HISQV Bases: 1010 Plate Name: 20180122_dnabank



S/N G:37 A:35 T:42 C:54

03959_15737_A8Ah_pCAG-F_V2

Jan 22, 2018 10:22AM, JST

KB.bcp

KB_3500_POP7_BDTV3.mob

Jan 22, 2018 11:04AM, JST

KB 1.4.1.8 Cap:5

Pls 1446 to 13873 PK1 Loc:1423

Spacing:12.35 Pls/Panel1350

AA G T A T G A A A A C T A C A C C A G C A G C T T C T T C A T C A G A T G C C G A G C C A A G A T T A T T C T G G A C C G T T C A C C T G C T G G C T G A

GalI NM, TCC to TCG C Ser, Gynomyem

PstI

