

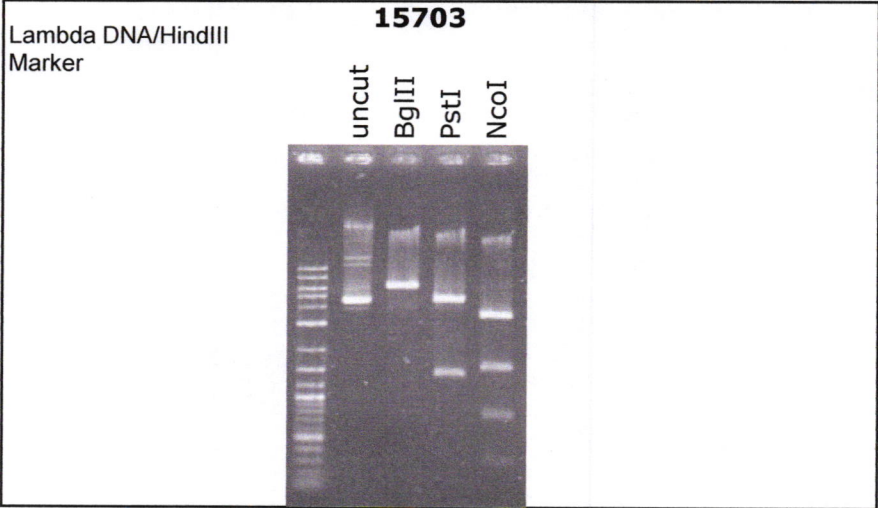
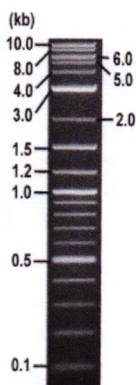


**RIKEN DNA BANK**

clone name : UnaG/pcDNA3-FLAG

- **Clone ID** : RDB\_15703
- **Lot** : 15703\_A7Lc
- **DNA Concentration** : 25 nanogram/microliter
- **Volume** : 40 microliter
- **Form** : DNA solution in TE buffer
- **Host** : DH5 alpha
- **Culture** : LB medium
- **Antibiotics** : 100 microgram/ml Ampicillin
- **Purification** : QIAGEN QIAprep Spin Miniprep kit
- **Digestion by restriction enzyme**

1 kb Plus DNA Ladder  
(NEB#N3200L),  
250 ng/well



Electrophoresis : 100 nanogram DNA per lane ; 1% agarose gel , 1 x TAE Buffer

| Restriction enzyme | Expected size of fragment     |
|--------------------|-------------------------------|
| <b>BglII</b>       | <b>5.9</b> kbp                |
| <b>PstI</b>        | <b>4.5, 1.4</b> kbp           |
| <b>NcoI</b>        | <b>3.3, 1.5, 0.7, 0.3</b> kbp |
|                    | kbp                           |

● **Confirmation of the insertion sequence**

Please be sure to check our sequence analysis results before your request.

| Sequence name | Primer ID | Primer name | Confirmed feature               |
|---------------|-----------|-------------|---------------------------------|
| Sequence - A  | Pr0016    | CMV_Forward | CMV pro,insert 5'(FLAG,UnaG 5') |
| Sequence - B  | Pr0606    | BGH_rev2    | bGH pA,insert(UnaG,FLAG)        |
| Sequence - C  | Pr0110    | SV40pro_F   | NeoR                            |
| Sequence - D  | -         | -           | -                               |
| Sequence - E  | -         | -           | -                               |
| Sequence - F  | -         | -           | -                               |
| Sequence - G  | -         | -           | -                               |
| Sequence - H  | -         | -           | -                               |

APPROVED BY

