

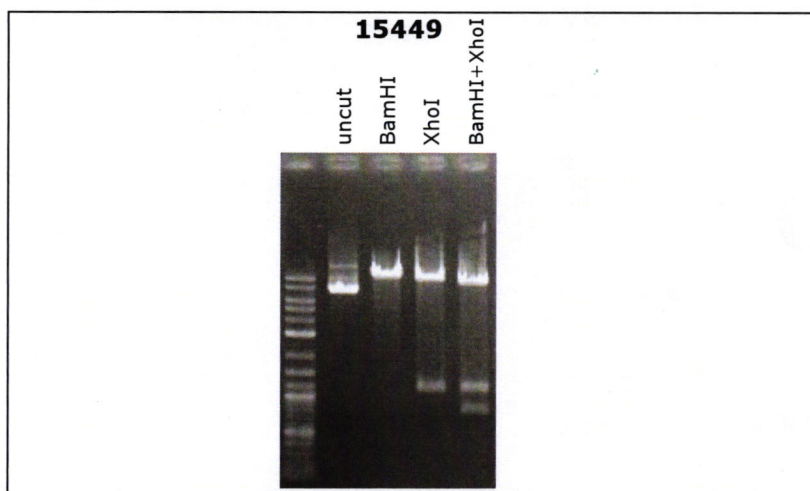
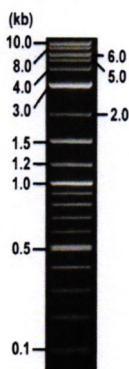


**RIKEN DNA BANK**

clone name : **tFucci(SA)2/pCSII-CMV**

- **Clone ID** : RDB\_ 15449
- **Lot** : 15449\_ A7Jv
- **DNA Concentration** : 25 ng/μL
- **Volume** : 40 μL
- **Form** : DNA solution in TE buffer
- **Host** : NEB stable
- **Culture** : LB medium
- **Antibiotics** : 100 μg/mL Ampicillin
- **Purification** : QIAGEN QIAprep Spin Miniprep kit
- **Digestion by restriction enzyme**

1 kb Plus DNA Ladder  
(NEB#N3200L),  
250 ng/well



Electrophoresis : 100 ng DNA per lane ; 1% agarose gel , 1 x TAE Buffer

| Restriction enzyme | Expected size of fragment |
|--------------------|---------------------------|
| <b>BamHI</b>       | <b>10.7</b> kbp           |
| <b>XhoI</b>        | <b>9.6, 1.1</b> kbp       |
| <b>BamHI+XhoI</b>  | <b>8.9, 1.1, 0.7</b> kbp  |
|                    | kbp                       |

● **Confirmation of the insertion sequence**

Please be sure to check our sequence analysis results before your request.

| Sequence name | Primer ID | Primer name | Confirmed feature                                   |
|---------------|-----------|-------------|---|
| Sequence - A  | Pr0517    | mCherry-C_R | insert 5'(mCherry 5'),CMV pro.2                     |
| Sequence - B  | Pr0250    | PRE_rev     | PRE,insert 3'(Gem1 (1-110), mVenus 3')              |
| Sequence - C  | Pr0673    | HIV-B_R     | HIV-1 psi,5' LTR,CMV pro.1                          |
| Sequence - D  | Pr0132    | HIVgp_R1    | HIV-1 psi,5' LTR                                    |
| Sequence - E  | Pr0021    | CSII-CMV5'  | insert 5'(mCherry 3')                               |
| Sequence - F  | Pr0453    | mCherry-C_F | insert mid(mCherry 3',Cdt1 (30-120), P2A,mVenus 5') |
| Sequence - G  | Pr0649    | EGFP-N_F    | insert mid(mVenus mid)                              |
| Sequence - H  | Pr0885    | bGH_rev3    | 3' LTR  |
| Sequence - I  | Pr0110    | SV40pro_F   | EM7 pro,BleoR,SV40 pA                               |

APPROVED BY :

