

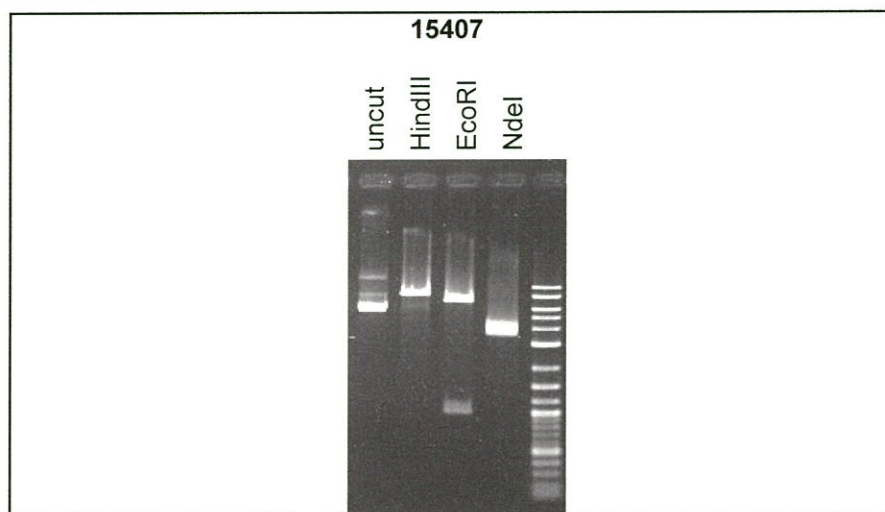
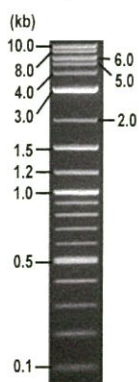


RIKEN DNA BANK

clone name : pMSCV-3xFLAG-mp62-PB1/Zinc

- Clone ID : RDB_15407
- Lot : 15407_A71k
- DNA Concentration : 25 nanogram/microliter
- Volume : 40 microliter
- Form : DNA solution in TE buffer
- Host : NEB stable
- Culture : LB medium
- Antibiotics : 100 microgram/ml Ampicillin
- Purification : QIAGEN QIAprep Spin Miniprep kit
- Digestion by restriction enzyme

1 kb Plus DNA Ladder
(NEB#N3200L),
250 ng/well



Electrophoresis : 100 nanogram DNA per lane ; 1% agarose gel , 1 x TAE Buffer

Restriction enzyme	Expected size of fragment	
HindIII	7.7	kbp
EcoRI	6.8, 1.0	kbp
NdeI	4.0, 3.7	kbp
		kbp

● Confirmation of the insertion sequence

Please be sure to check our sequence analysis results before your request.

Sequence name	Primer ID	Primer name	Confirmed feature
Sequence - A	Pr0730	gag-M_F	gag3', 3xFLAG, insert5'
Sequence - B	Pr0243	PGK_N_rev	insert3', 3xFLAG
Sequence - C	Pr0065	pBR322_BamHI_R	5'LTR, MESV psi
Sequence - D	Pr0249	PGKpro_F	PGK pro, HygR 5'
Sequence - E	Pr0501	HygR-C_F	HygR 3', 3'LTR
Sequence - F	-	-	-
Sequence - G	-	-	-
Sequence - H	-	-	-

APPROVED BY :



S/N G:406 A:439 T:297 C:366

D04516A7_A71k_2_gag-M_F

Nov 16, 2017 11:24AM, JST

KB.bcp

KB_3500_POP7_BDTV3.mob

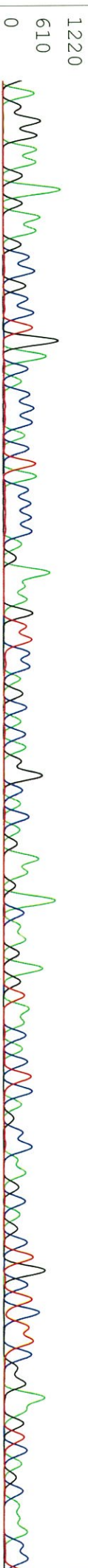
Nov 16, 2017 11:51AM, JST

KB 1.4.1.8 Cap:2

Pts 1407 to 12883 PK1 Loc:1384

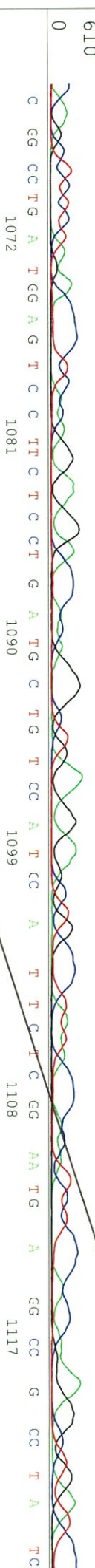
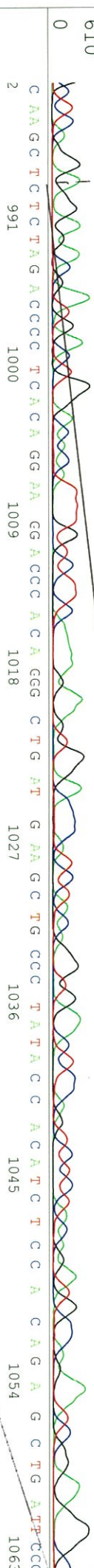
Spacing:11.49 Pts/Panel1350

3 AGGGAAGAAAGCCGCCCTGACACCCCACTAACCCAGAAAATTCCAGCACAAGGCACAGAGAACAAAGATTAAACCTCAGCCAAAGCAGCTGCTCCGGAAATCAGCAAAAC



ApaI

→ wpb62 del PB1 zinc 1



S/N G:498 A:425 T:324 C:397

primer name C : pBR322_BamHI_R

KB_3500_POP7_BDTV3.mob

Nov 16, 2017 11:51AM, JST

KB.bcp

5- ATGCGTCCGGCGTAGA -3'

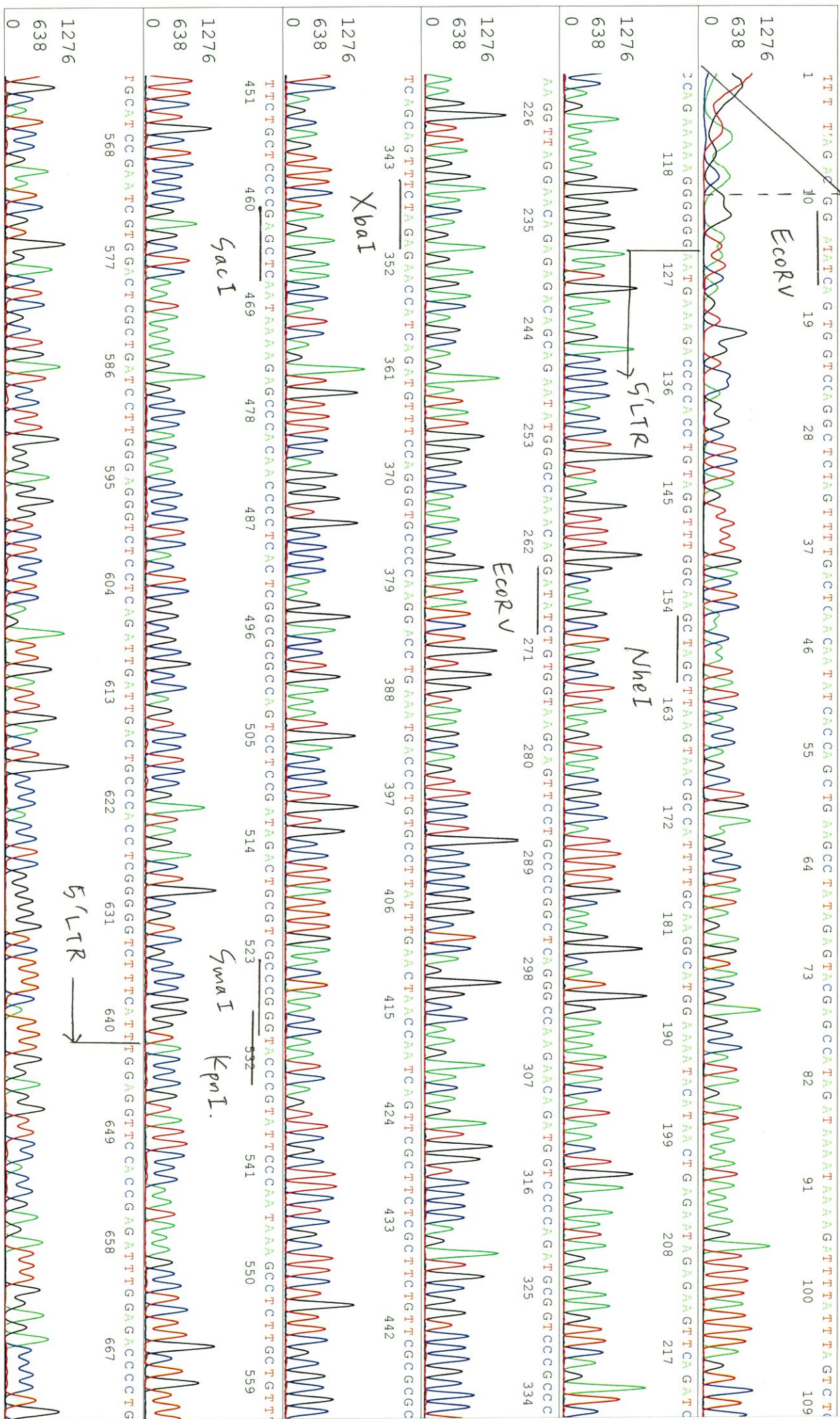
Pts 1396 to 12885 Pk1 Loc:1373

Spacing:11.42 Pts/Panel1350

KB 1.4.1.8 Cap:8

Version 6.0 HISQV Bases: 1018

Plate Name: 20171116 mix



S/N G:498 A:425 T:324 C:397

D04516A7_AT1k_2_pBR322_BamHI_R

Nov 16, 2017 11:24AM, JST

KB.bcp

KB_3500_POP7_BDTV3.mob

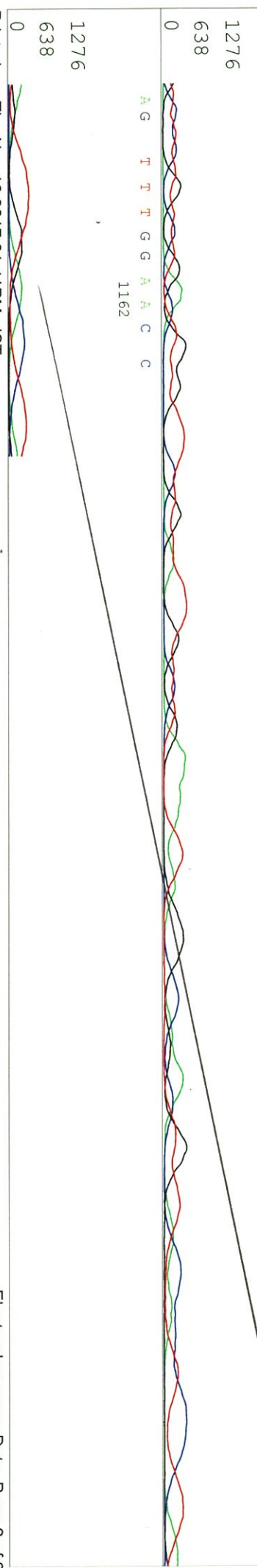
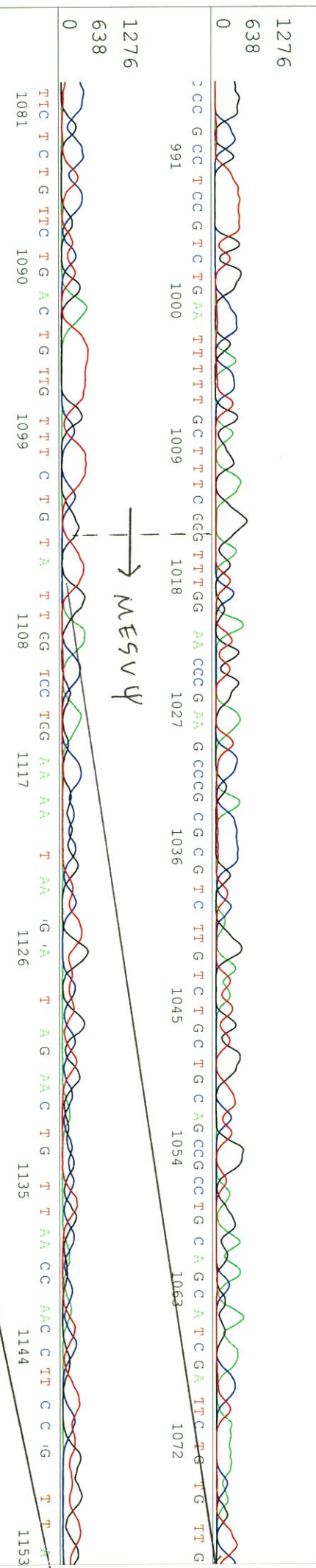
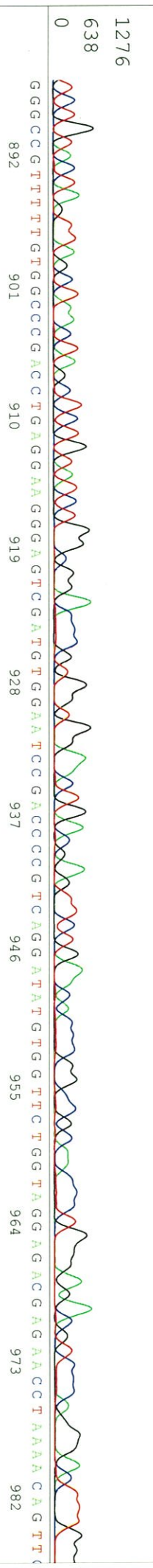
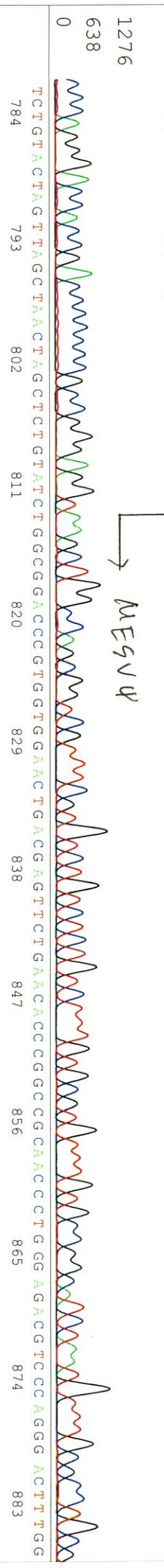
Nov 16, 2017 11:51AM, JST

KB 1.4.1.8 Cap:8

Pts 1396 to 12885 Pk1 Loc:1373

Spacing: 11.42 Pts/Panel1350

Version 6.0 HiSQV Bases: 1018



S/N G:652 A:423 T:374 C:472

primer name D : PGKpro_F

D04516A7_AT1k_2_PGKpro_F

Nov 16, 2017 11:24AM, JST

KB:bcp

5'- ATTCTGCACGCTTCAAAAAG -3'

KB_3500_POP7_BDTV3.mob

Nov 16, 2017 11:51AM, JST

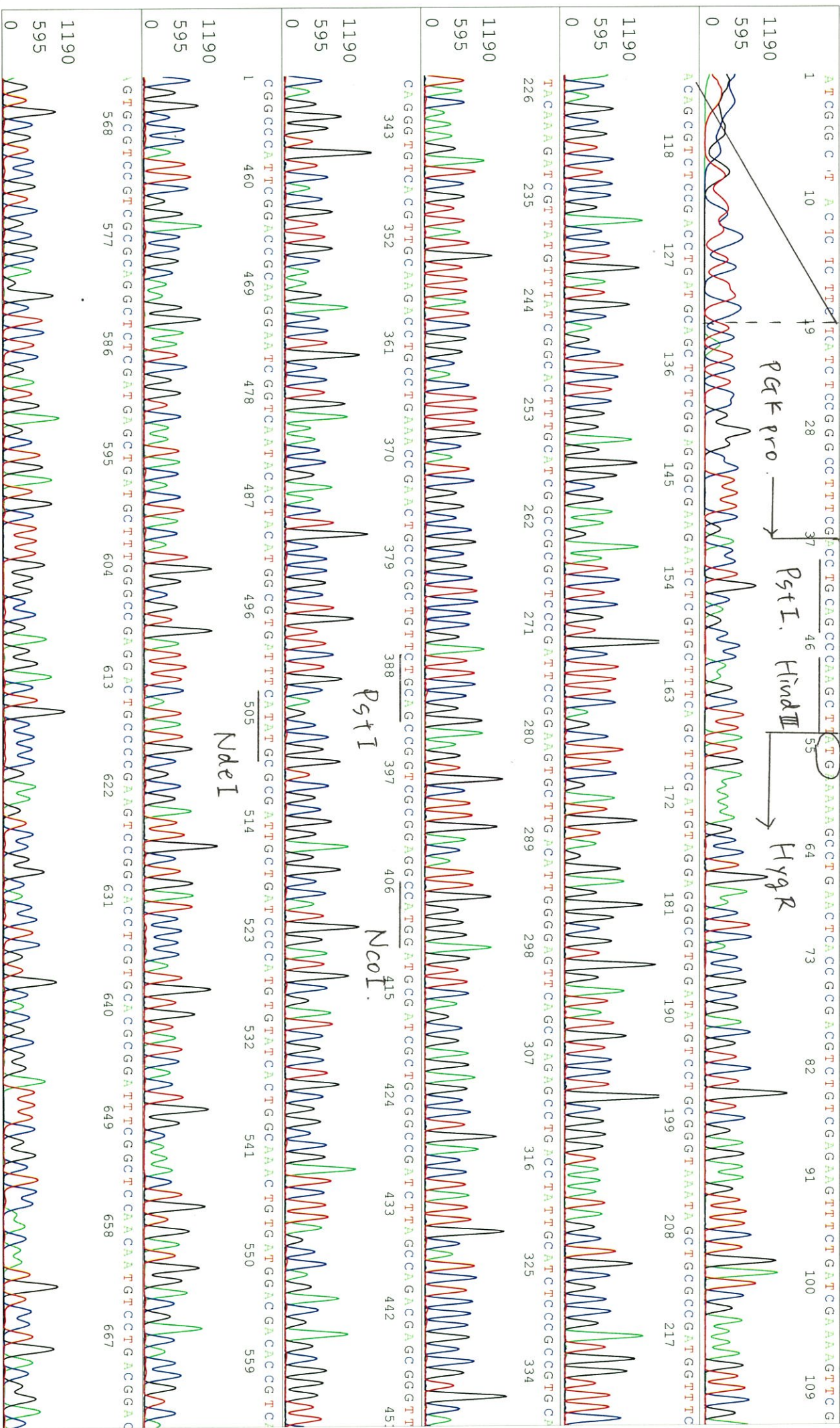
KB 1.4.1.8 Cap:14

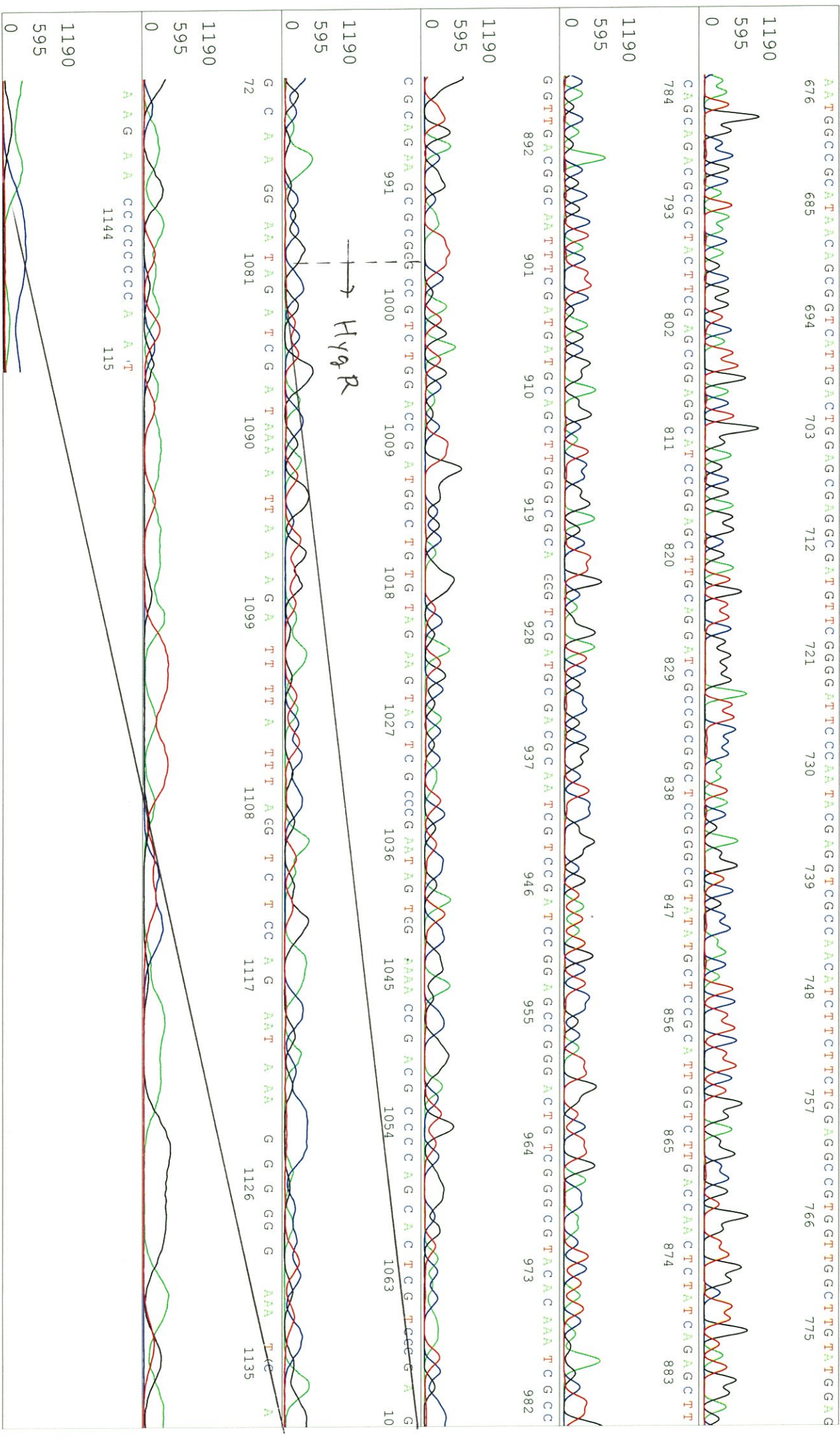
Pis 1364 to 12780 PK1 Loc:1341

Spacing:11.46 Pts/Panel1350

Version 6.0 HiSQV Bases: 1000

Plate Name: 20171116 mix





S/N G:116 A:83 T:63 C:83

D04516A7_A7Ik_2_HyGR-C_F
KB_3500_POP7_BDTV3.mob

Sep 09, 2019 02:35PM, JST

KB.bcp

Pls 1405 to 12265 Pk1 Loc:1382

Sep 09, 2019 03:02PM, JST

KB 1.4.1.8 Cap:8

Version 6.0 HISQV Bases: 913

Plate Name: 20190909_MGE

3 A A A T G A C C C T G T G C C T T A T T T G A A C T A A C C A A T C A G T T C G C T T C T C G C T T C T G T T C G C G C C C T T C T G C T C C C G A G C T C A A T A A A G A G C C C A C A C C C C T C A C T
676 685 694 703 712 721 730 739 748 757 766 775

1336
668
0

Sac I

C G G C C G C C C A G T C C T C C G A T A G A C T G C G T C G C C C G G G T A C C C G T G T A T C C A A T A A A C C C T C T T G C A G T T G C A T C C G A C T T G G T G G T C T G C T T C C T G C
784 793 802 811 820 829 838 847 856 865 874

1336
668
0

Sma I *Kpn I*

G G A G G G T C T C C T C T G A G T G A T T G A C T A C C C G T C A G C G G G G G T C T T T C A T G G G T A A C A G T T T C C T T G A A G T T G G A G A A C A A C A T T C T G A G G G
883 892 901 910 919 928 937 946 955 964

1336
668
0

3'LTR

T A G G A G T C G A A A T A T T A A G T A A T C C C T G A C T C A A T T T A G C C A C T G T T T T T G G A T T C C A C A T A C T C C C A A T A C T C C T G A A
973 982 991 1000 1009 1018 1027 1036 1045

1336
668
0

T T A G T C C A A T T A A T G G A C A G C G C C A G A A G A G C C T T G G G A G A A T T G C T G C A A C T T G G
1054 1063 1072 1081 1090 1099

1336
668
0

T A A T T C C G G T
1108