

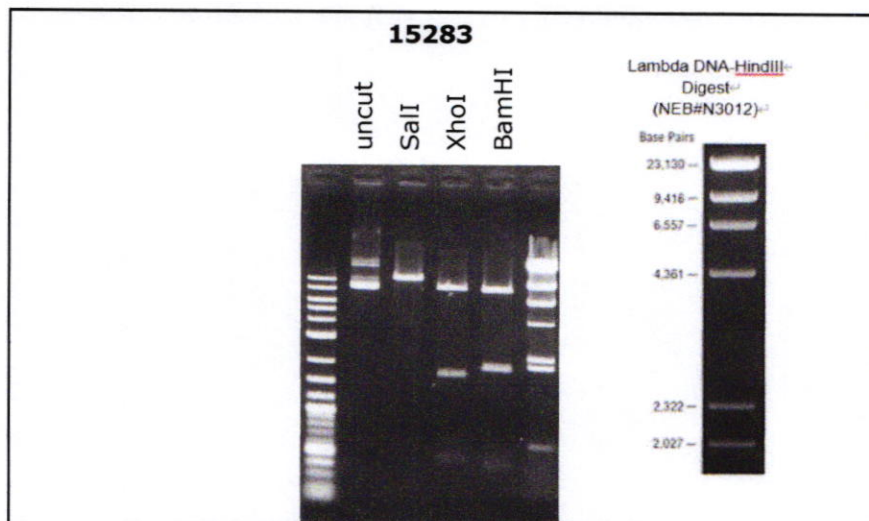
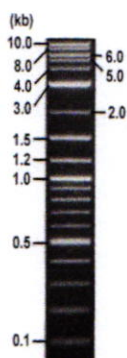


**RIKEN DNA BANK**

clone name : pEF-FLAG-mouse myosin Va (Brain type)

- Clone ID : RDB\_15283
- Lot : 15283\_A7Go
- DNA Concentration : 25 nanogram/microliter
- Volume : 40 microliter
- Form : DNA solution in TE buffer
- Host : DH5 alpha
- Culture : LB medium
- Antibiotics : 100 microgram/ml Ampicillin
- Purification : QIAGEN QIAprep Spin Miniprep kit
- Digestion by restriction enzyme

1 kb Plus DNA Ladder  
(NEB#N3200L),  
250 ng/well



Electrophoresis : 100 nanogram DNA per lane ; 1% agarose gel , 1 x TAE Buffer

Restriction enzyme	Expected size of fragment	
<b>SalI</b>	<b>10.8</b>	kbp
<b>XhoI</b>	<b>8.7, 1.7, 0.4</b>	kbp
<b>BamHI</b>	<b>8.6, 1.9, 0.4</b>	kbp
		kbp

● Confirmation of the insertion sequence

Please be sure to check our sequence analysis results before your request.

Sequence name	Primer ID	Primer name	Confirmed feature
Sequence - A	Pr0168	EF1a-C_F	EF-1 alpha pro,insert 5'(FLAG,mMyosin Va(Brain type 5'))
Sequence - B	Pr0031	hGCSF_R	hG-CSF polyA,insert 3'(mMyosin Va(Brain type 3'))
Sequence - C	-	-	-
Sequence - D	-	-	-
Sequence - E	-	-	-
Sequence - F	-	-	-
Sequence - G	-	-	-
Sequence - H	-	-	-

APPROVED BY :



S/N G:343 A:291 T:244 C:247

primer name A : EF1a-C\_F

D04773A1\_A7Go\_1\_EF1a-C\_F

Sep 19,2017 02:40PM, JST

KB.bcp

5-AGTTAGGCCAGCTTGGCACCTTGATG-3'

KB\_3500\_POP7\_BDTV3.mob

Sep 19,2017 03:06PM, JST

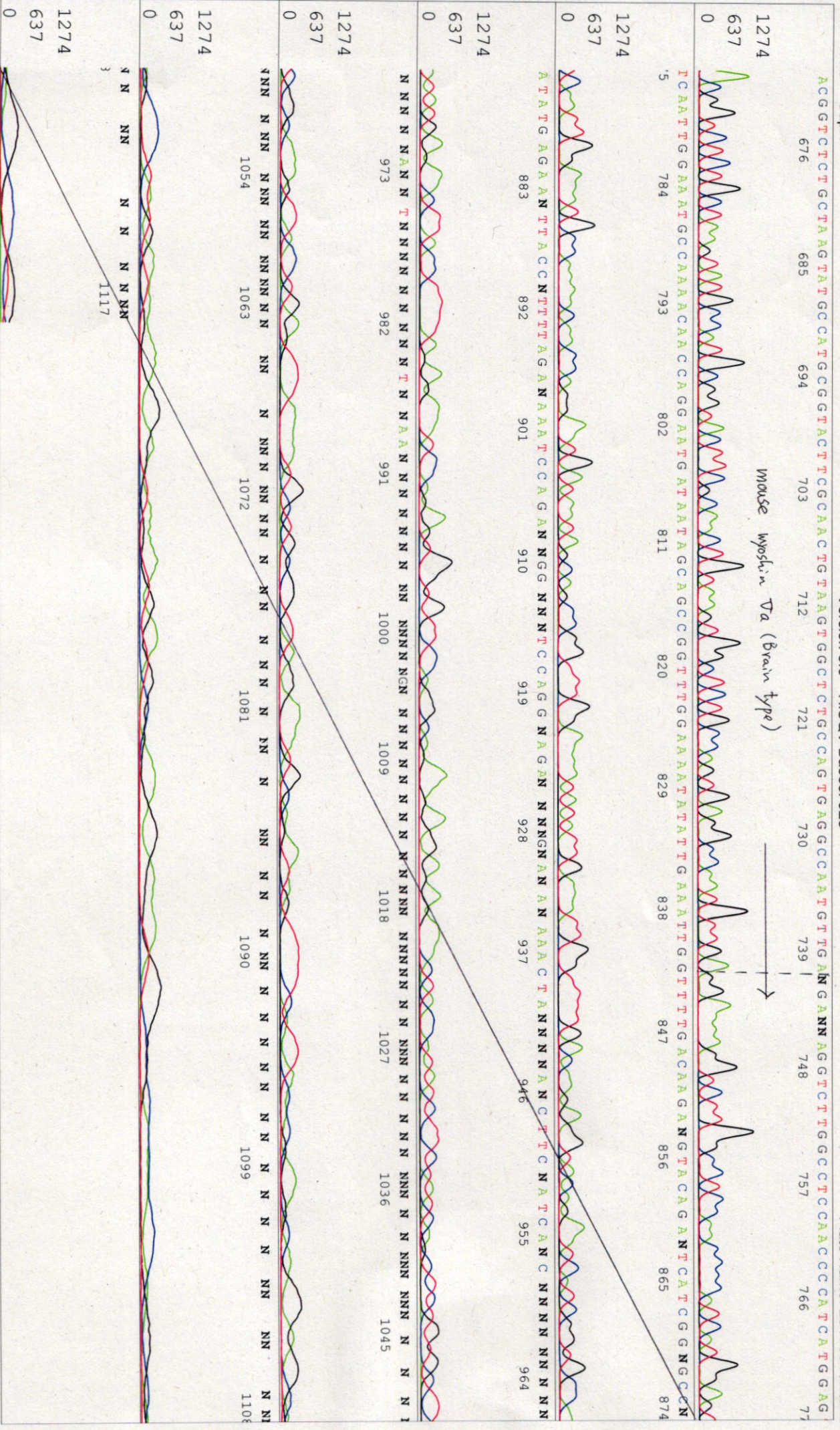
KB 1.4.1.8 Cap:1

Version 6.0 HiSeqV Bases: 925

Pis 1547 to 12908 Pk1 Loc:1524

Plate Name: 20170919kitaku





S/N G:457 A:347 T:311 C:351 primer name  $\beta$  : hGCSF\_R  
KB.bcp  
KB 1.4.1.8 Cap:2  
5' TATTAACAGGGATTCTTG3'

D04773A1\_ATGo\_1\_hGCSF\_R  
KB\_3500\_POP7\_BDTV3.mob  
Pis 1525 to 12936 Pk1 Loc:1502  
Version 6.0 HiSeqV Bases: 923

Sep 19,2017 02:40PM, JST  
Sep 19,2017 03:06PM, JST  
Spacing:11.5 Pts/Panel1350  
Plate Name: 20170919Kitaku



S/N G:457 A:347 T:311 C:351

KB.bcp  
 KB 1.4.1.8 Cap:2

