

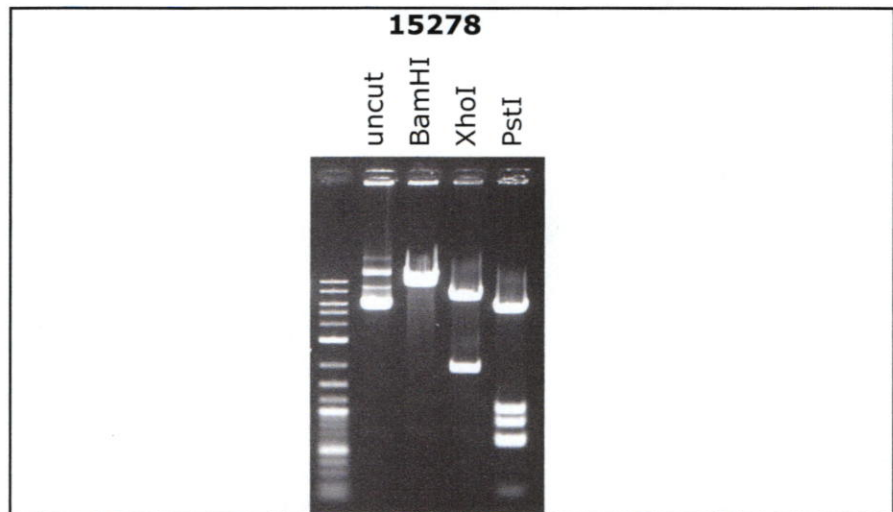
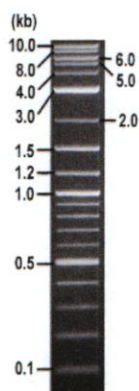


RIKEN DNA BANK

clone name : mCherry-zCdt1(1/190) / pT2KXIGdeltain

- Clone ID : RDB_15278
- Lot : 15278_A7H9
- DNA Concentration : 25 nanogram/microliter
- Volume : 40 microliter
- Form : DNA solution in TE buffer
- Host : DH5 alpha
- Culture : LB medium
- Antibiotics : 100 microgram/ml Ampicillin
- Purification : QIAGEN QIAprep Spin Miniprep kit
- Digestion by restriction enzyme

1 kb Plus DNA Ladder
(NEB#N3200L),
250 ng/well



Electrophoresis : 100 nanogram DNA per lane ; 1% agarose gel , 1 x TAE Buffer

| Restriction enzyme | Expected size of fragment |
|--------------------|---|
| BamHI | 8.6 kbp |
| XhoI | 6.7, 1.9 kbp |
| PstI | 5.3, 1.1, 0.9, 0.6, 0.6, 0.2 kbp |
| | kbp |

● Confirmation of the insertion sequence

Please be sure to check our sequence analysis results before your request.

| Sequence name | Primer ID | Primer name | Confirmed feature |
|---------------|-----------|-------------|-------------------------------|
| Sequence - A | Pr0497 | beta-gi_F | beta-globin intron, insert 5' |
| Sequence - B | Pr0166 | pAxCALNLF1 | SV40pA, insert 3' |
| Sequence - C | Pr0490 | EF1a-N_R2 | EF-1alpha pro, Tol2 R |
| Sequence - D | Pr0059 | pAxEF R2 | SV40pA, Tol2 L |
| Sequence - E | - | - | - |
| Sequence - F | - | - | - |
| Sequence - G | - | - | - |
| Sequence - H | - | - | - |

APPROVED BY :

