

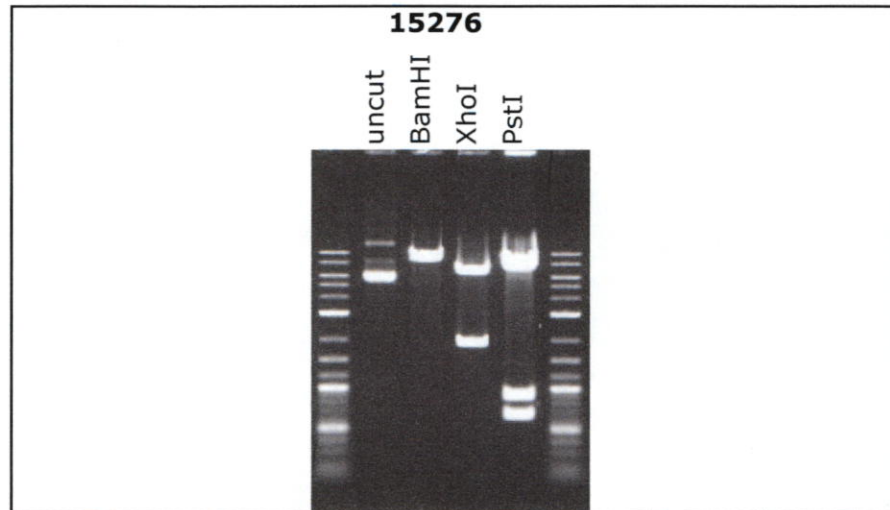
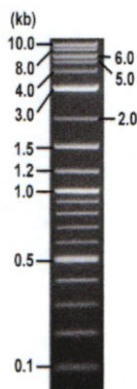


**RIKEN DNA BANK**

clone name : **mAG-zGeminin(1/100) / pT2KXIGdeltain**

- **Clone ID** : RDB\_15276
- **Lot** : 15276\_A7H9
- **DNA Concentration** : 25 nanogram/microliter
- **Volume** : 40 microliter
- **Form** : DNA solution in TE buffer
- **Host** : DH5 alpha
- **Culture** : LB medium
- **Antibiotics** : 100 microgram/ml Ampicillin
- **Purification** : QIAGEN QIAprep Spin Miniprep kit
- **Digestion by restriction enzyme**

1 kb Plus DNA Ladder  
(NEB#N3200L),  
250 ng/well



Electrophoresis : 100 nanogram DNA per lane ; 1% agarose gel , 1 x TAE Buffer

Restriction enzyme	Expected size of fragment
<b>BamHI</b>	<b>8.3</b> kbp
<b>XhoI</b>	<b>6.4, 1.9</b> kbp
<b>PstI</b>	<b>6.9, 0.9, 0.6</b> kbp
	kbp

● **Confirmation of the insertion sequence**

Please be sure to check our sequence analysis results before your request.

Sequence name	Primer ID	Primer name	Confirmed feature
Sequence - A	Pr0489	EF1a-C_F2	EF-1alpha pro, beta-globin intron, insert 5'
Sequence - B	Pr0166	pAxCALNLF1	SV40pA, insert 3'
Sequence - C	Pr0490	EF1a-N_R2	EF-1alpha pro, Tol2 R
Sequence - D	Pr0059	pAxEF R2	SV40pA, Tol2 L
Sequence - E	-	-	-
Sequence - F	-	-	-
Sequence - G	-	-	-
Sequence - H	-	-	-

APPROVED BY :

