

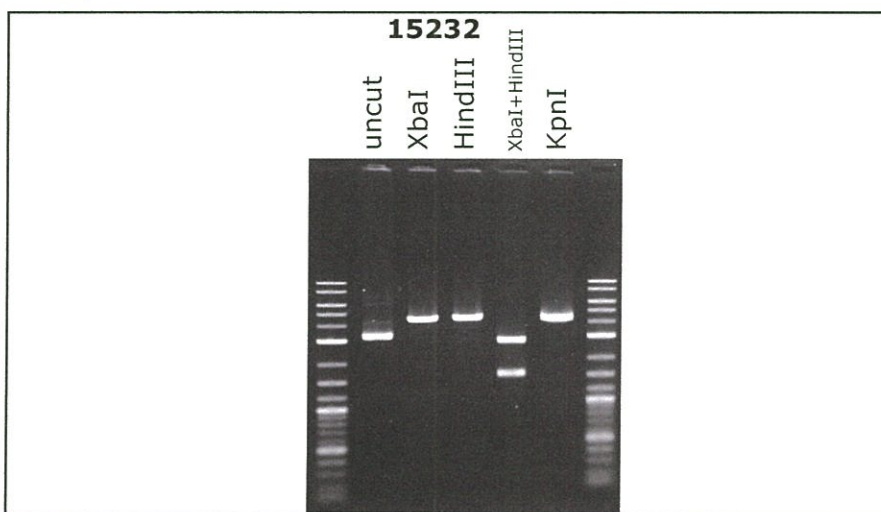
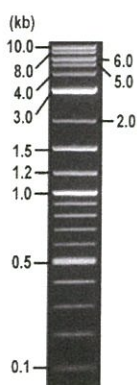


RIKEN DNA BANK

clone name : **tdKeima/pRSETB**

- Clone ID : RDB _ 15232
- Lot : 15232 _ A7H9
- DNA Concentration : 25 nanogram/microliter
- Volume : 40 microliter
- Form : DNA solution in TE buffer
- Host : DH5 alpha
- Culture : LB medium
- Antibiotics : 100 microgram/ml Ampicillin
- Purification : QIAGEN QIAprep Spin Miniprep kit
- Digestion by restriction enzyme

1 kb Plus DNA Ladder
(NEB#N3200L),
250 ng/well



Electrophoresis : 100 nanogram DNA per lane ; 1% agarose gel , 1 x TAE Buffer

Restriction enzyme	Expected size of fragment
XbaI	4.2 kbp
HindIII	4.2 kbp
XbaI+HindIII	2.7, 1.5 kbp
KpnI	4.2 kbp

● **Confirmation of the insertion sequence**

Please be sure to check our sequence analysis results before your request.

Sequence name	Primer ID	Primer name	Confirmed feature
Sequence - A	Pr0724	lacIpro-B_F	T7 pro, RBS, 6xHis, T7 tag, Xpress tag, insert 5'
Sequence - B	Pr0798	T7ter_R1	insert 3'
Sequence - C	Pr0926	dK-N_F1	insert mid
Sequence - D	-	-	-
Sequence - E	-	-	-
Sequence - F	-	-	-
Sequence - G	-	-	-
Sequence - H	-	-	-

APPROVED BY :



SN/G:384 A:273 T:206 C:208

primer name A : lacIpro-B_F

KB_bcp KB 1.4.1.8 Cap:1

Jan 21, 2021 10:11AM, JST

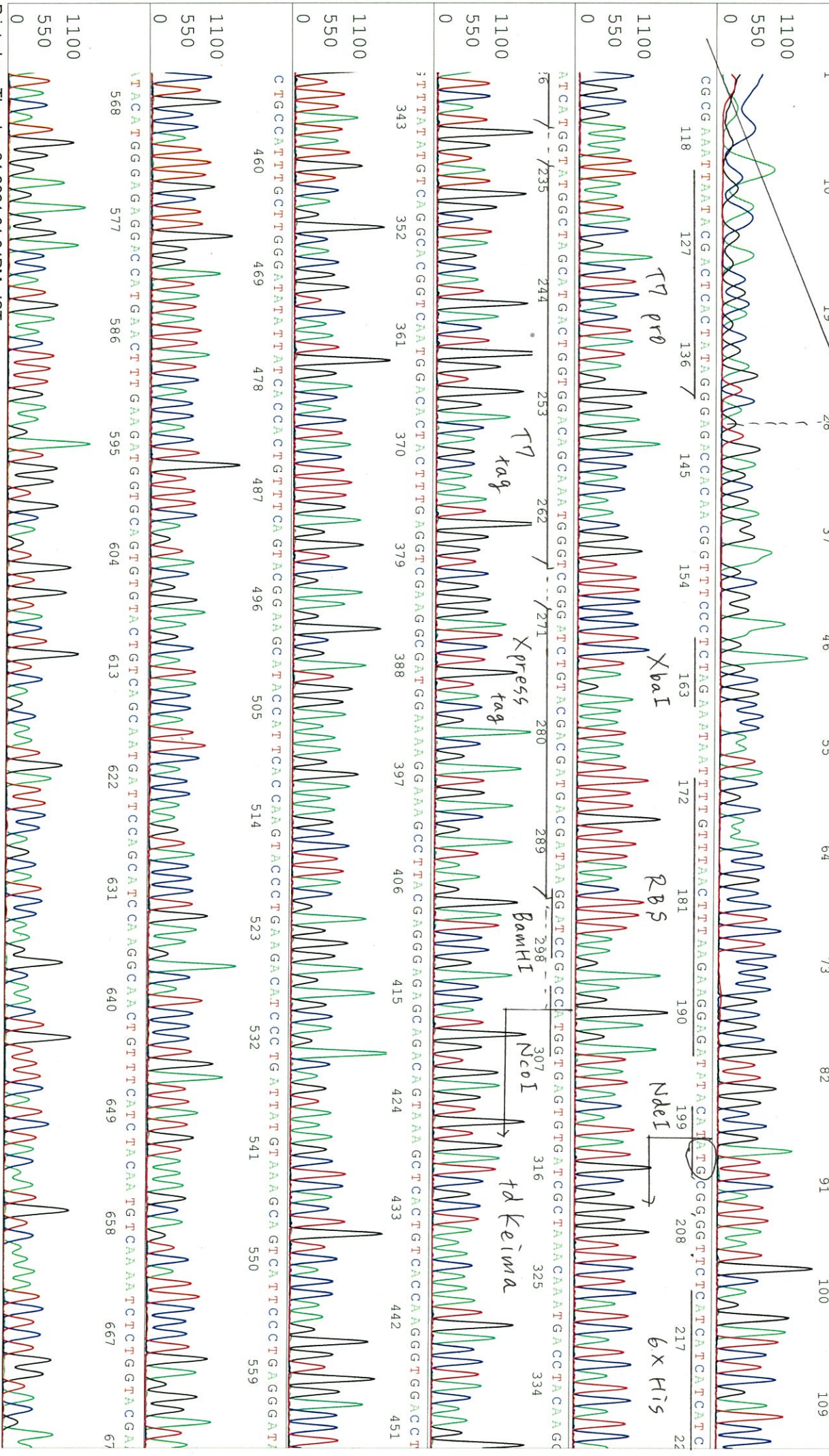
KB_bcp KB 1.4.1.8 Cap:1

5'-CCGCCCTTGAGTGAGCTGATA-3'

KB_3500_POP7_BDTV3.mob

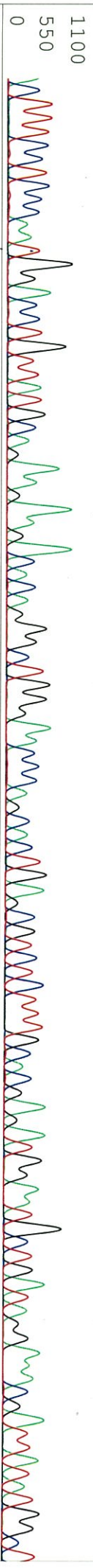
Jan 21, 2021 10:39AM, JST

15232_BOL4F_2_lacIpro-B_F_A01_01_ABI24
KB_3500_POP7_BDTV3.mob
Pls 1494 to 14033 Pk1 Loc:1471
Version 6.0 HISQV Bases: 985



ACTTCCCTCCCAATGGACCCTGTTATGCAGAGAAGACACAGGGCTGGGAACCAGCACTGAGCGTCTCTTTGCCACGAGATGGAATGCTGATAGGAAACGATTATTGGCT

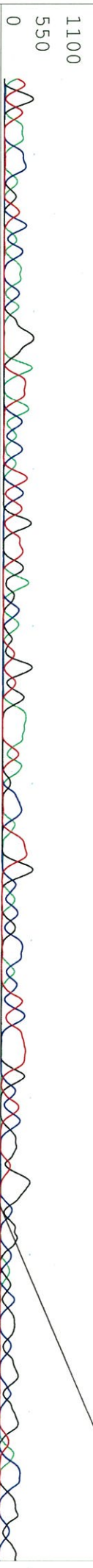
6 685 694 703 712 721 730 739 748 757 766 775 784



rd Keiwa

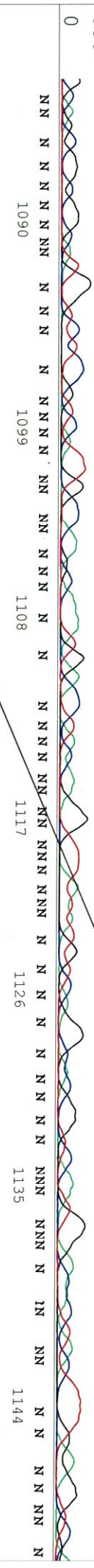
CTGAA GTTGGAA N GAGGTGGTCCACTATTGTGTGAATTTAAATCTACTTACAAAGCAAAGAA NCC TGTGANGATGCGCCAGGGTATCCACTATTATGAA CCGCAAAC TGA

793 802 811 820 829 838 847 856 865 874 883 891



TGTAACCAAGTCAACAAGGGNTTACACATCTGTTGANCAAGTGTGAAATAGC NN TTGCACGCCACTCTTTGCTCGGN GCGGCA GCGGCGG N G N A N C N

2 901 910 919 928 937 946 955 964 973 982 991



GNNCGGC GGN ANN NNNCCGNCATNNNCN NNCNANNNNNN NN NTNNNNNNNN NNNNN NN NNN NN NNN NN NNN NN NNN NN NNN NN NNN NN

1000 1009 1018 1027 1036 1045 1054 1063 1072 1081



NN

1090 1099 1108 1117 1126 1135 1144

S/N G:105 A:78 T:52 C:46

15232_BOL4F_2_dk-N_F1
KB_3500_POP7_BDTV3.mob

Jan 21, 2021 10:11AM, JST
Jan 21, 2021 10:39AM, JST

KB.bcp

Pts 1430 to 14062 Pk1 Loc:1407

Spacing:12.26 Pts/Panel1350

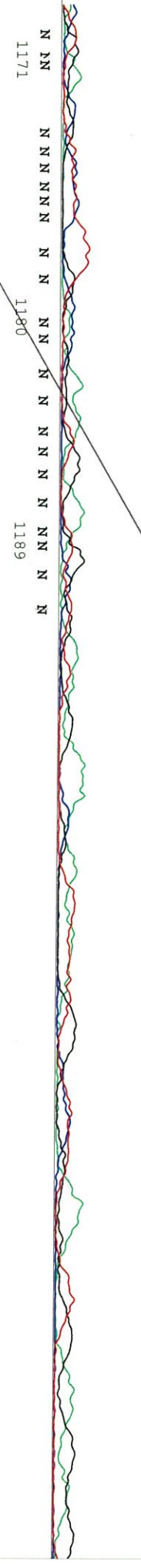
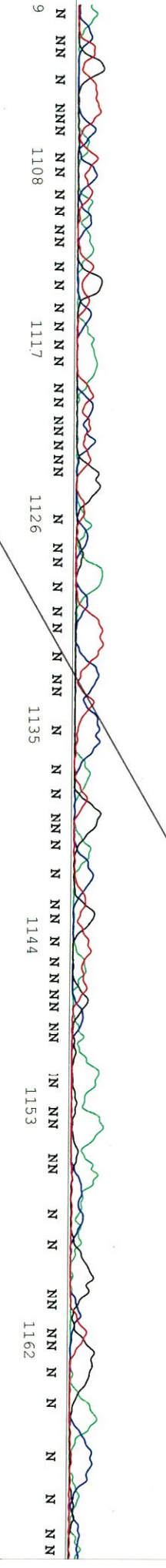
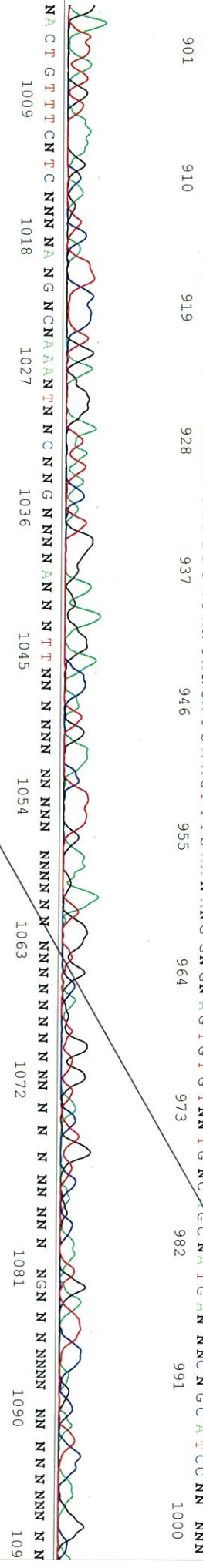
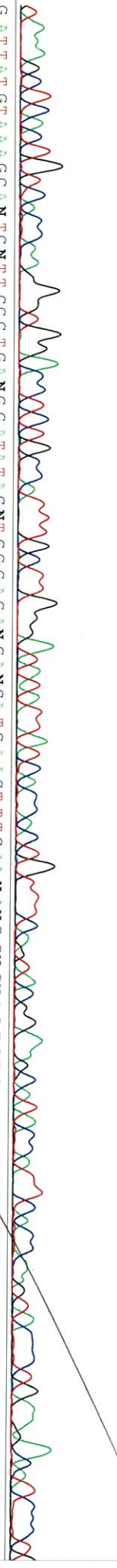
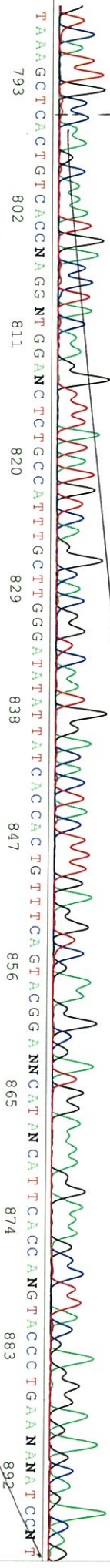
KB 1.4.1.8 Cap:13

Version 6.0 HISQV Bases: 970

Plate Name: 20210121 Kitaku

GTTCATTGCTNAAAGCAAAATGACCTACCAAGGTTTATATGTCAGGCAACGGTCAATGGACACTACTTTGAGNTCCGAAGGNGATGGAAANAAGAAAGCCCTTACCGANGCAGGAGAGAG

→ rd Keiwa



S/N G:296 A:152 T:186 C:157

primer name C : T7ier_R1

KB_3500_POP7_BDTV3.mob

Jan 21, 2021 10:11AM, JST

KB.bop

5'-AGCAAAAACCCCTCAAG-3'

Pls 1410 to 14031 Pk1 Loc:1387

Jan 21, 2021 10:39AM, JST

KB 1.4.1.8 Cap:4

Version 6.0 HISQV Bases: 978

Spasing:12.34 Pst/Panel1350
Plate Name: 20210121 Kitaku

