

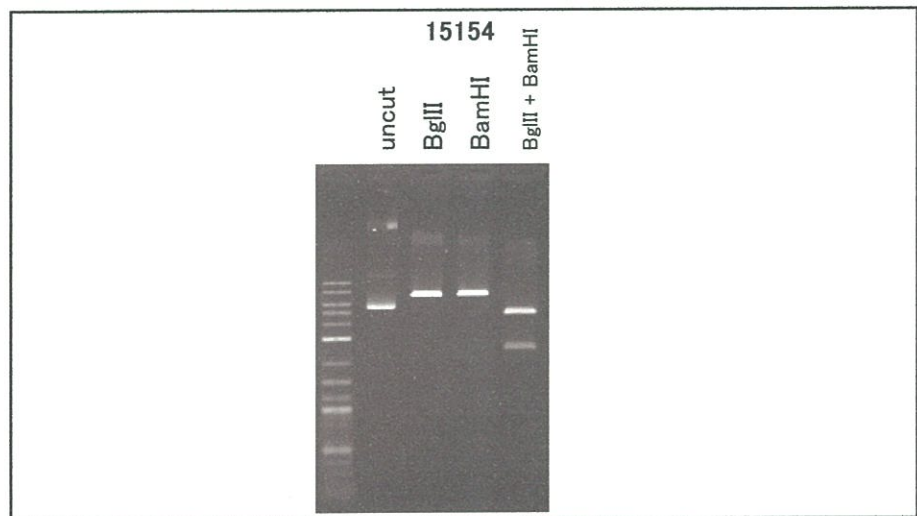
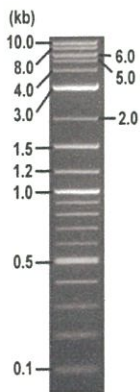


RIKEN DNA BANK

clone name : ENPL-mCherry-KDEL

- Clone ID : RDB_15154
- Lot : 15154_A7F1
- DNA Concentration : 25 nanogram/microliter
- Volume : 40 microliter
- Form : DNA solution in TE buffer
- Host : DH5 alpha
- Culture : LB medium
- Antibiotics : 25 microgram/ml kanamycin
- Purification : QIAGEN QIAprep Spin Miniprep kit
- Digestion by restriction enzyme

2-Log DNA Ladder
(NEB#N3200L),
125 ng/well



Electrophoresis : 100 nanogram DNA per lane ; 1% agarose gel , 1 x TAE Buffer

Restriction enzyme	Expected size of fragment
<u>BglII</u>	<u>7.1</u> kbp
<u>BamHI</u>	<u>7.1</u> kbp
<u>BglII + BamHI</u>	<u>4.7, 2.4</u> kbp
	kbp
	kbp

● Confirmation of the insertion sequence

Sequence name	Primer name	Sequence name	Primer name
Sequence - A	CMV-Forward	Sequence - E	-
Sequence - B	mCherry-N_rev	Sequence - F	-
Sequence - C	SV40polyA-R	Sequence - G	-
Sequence - D	SV40pro_F_V2	Sequence - H	-



APPROVED BY :

S/N G:379 A:617 T:478 C:521

primer name A : CMV-Forward

KB_3500_POP7_BDTV3.mob

Pts 1539 to 13039 PK1 Loc:1516

KB.bcp

5'-GCACCAAAATCACAGGGACTT-3'

Version 6.0 HiSeqV Bases: 943

KB 1.4.1.8 Cap:2

1 T C A C T C C G C C C A T T G A T G G G C G G T A G G C G T G T A C C G T G G A G G T C T A T A A G C A G A G C T G G T T T A G T G A A C C G T C A G A T C C G C T A G C G C T A C C G G A

109 118 127 136 145 154 163 172 181 190 199 208

2

CMV

PRD

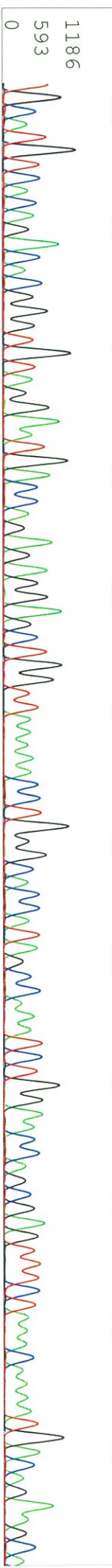
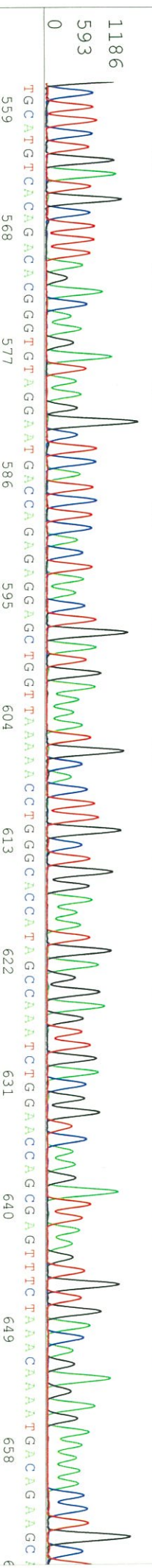
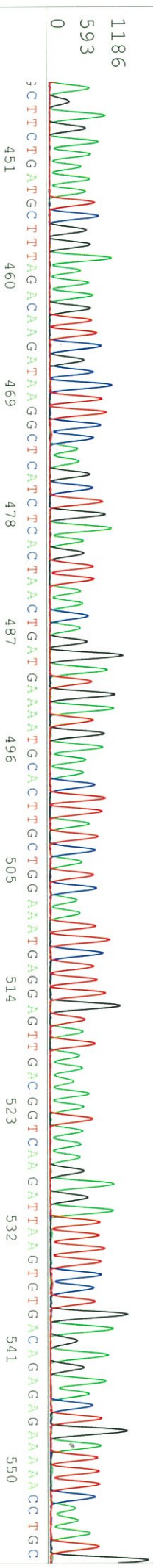
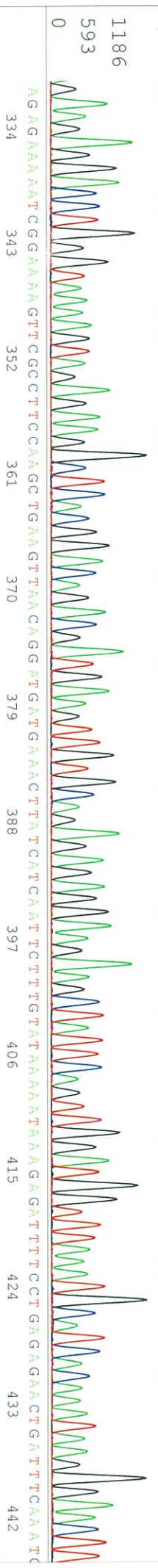
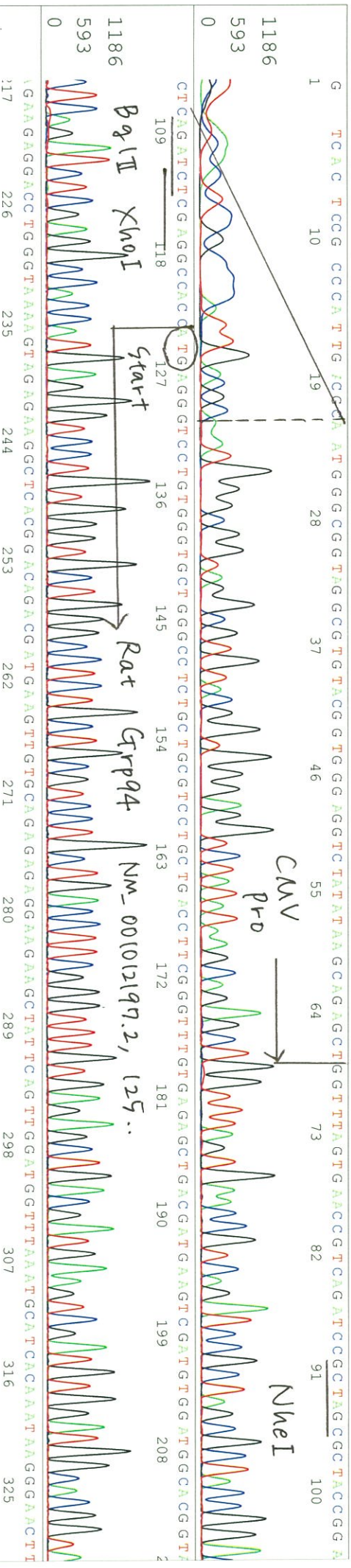
NheI

BglII XhoI

Start

Rat Grp94

NM_001012197.2, 125..



S/N G:379 A:617 T:478 C:521

KB.bcp

KB 1.4.18 Cap:2

D04425A3_A7F1_2_CMV-Forward_A08_02_AB124

D04425A3_A7F1_2_CMV-Forward

KB_3500_POP7_BDTV3.mob

Pts 1539 to 13039 Pk1 Loc: 1516

Version 6.0 HiSQV Bases: 943

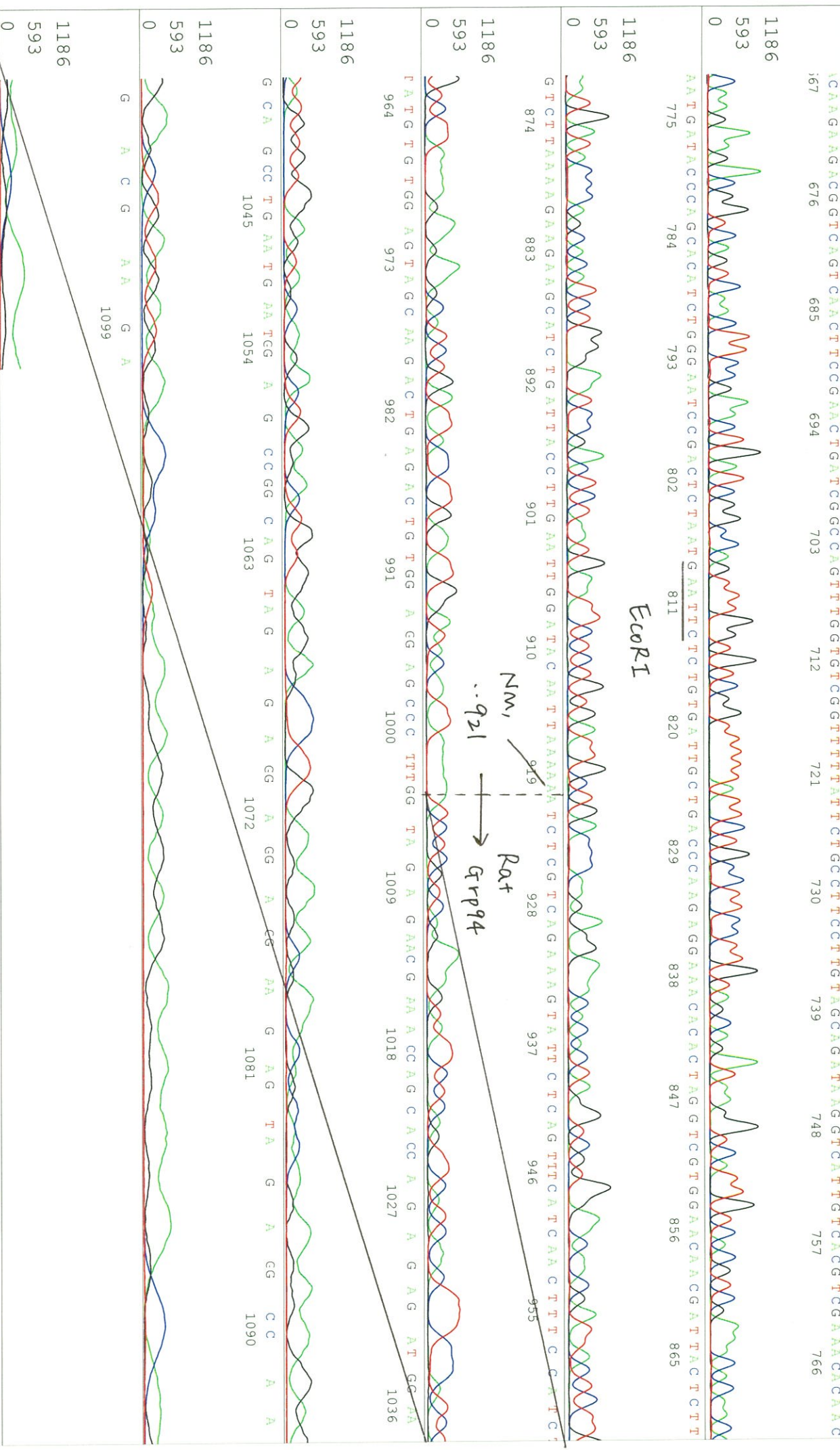
Inst Model/Name 3500/3500 Instrument

Jun 28, 2017 02:06PM, JST

Jun 28, 2017 02:33PM, JST

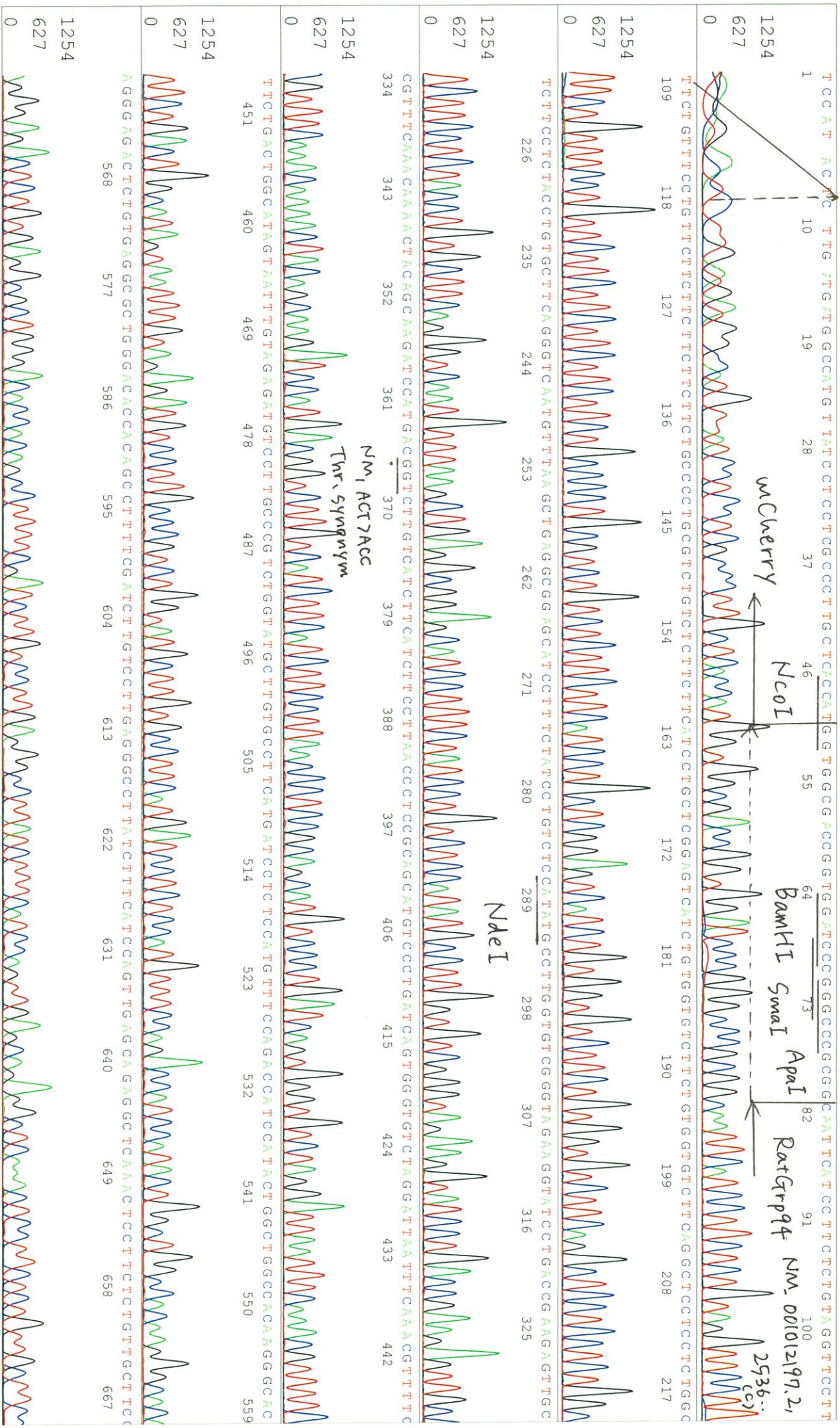
Spacing: 1.48 Pts/Panel 1350

Plate Name: 20170628_kitaku



S/N G:443 A:528 T:699 C:871 primer name B : mCherry-N_rev
KB.bcp KB_3500_POP7_BDTV3.mob
KB 1.4.1.8 Cap:5 5- GTTCACGGAGCCCTCCATGT -3'
Pis 1539 to 13066 PK1 Loc:1516
Version 6.0 HiSQV Bases: 962

Jun 28,2017 02:06PM, JST
Jun 28,2017 02:33PM, JST
Spacing:1.59 Pts/Panel1350
Plate Name: 20170628_kitaku



S/N G:443 A:528 T:699 C:871

D04425A3_A7FL_2_mCherry-N_R

Jun 28, 2017 02:06PM, JST

KB.bcp

KB_3500_POP7_BDTV3.mob

Jun 28, 2017 02:33PM, JST

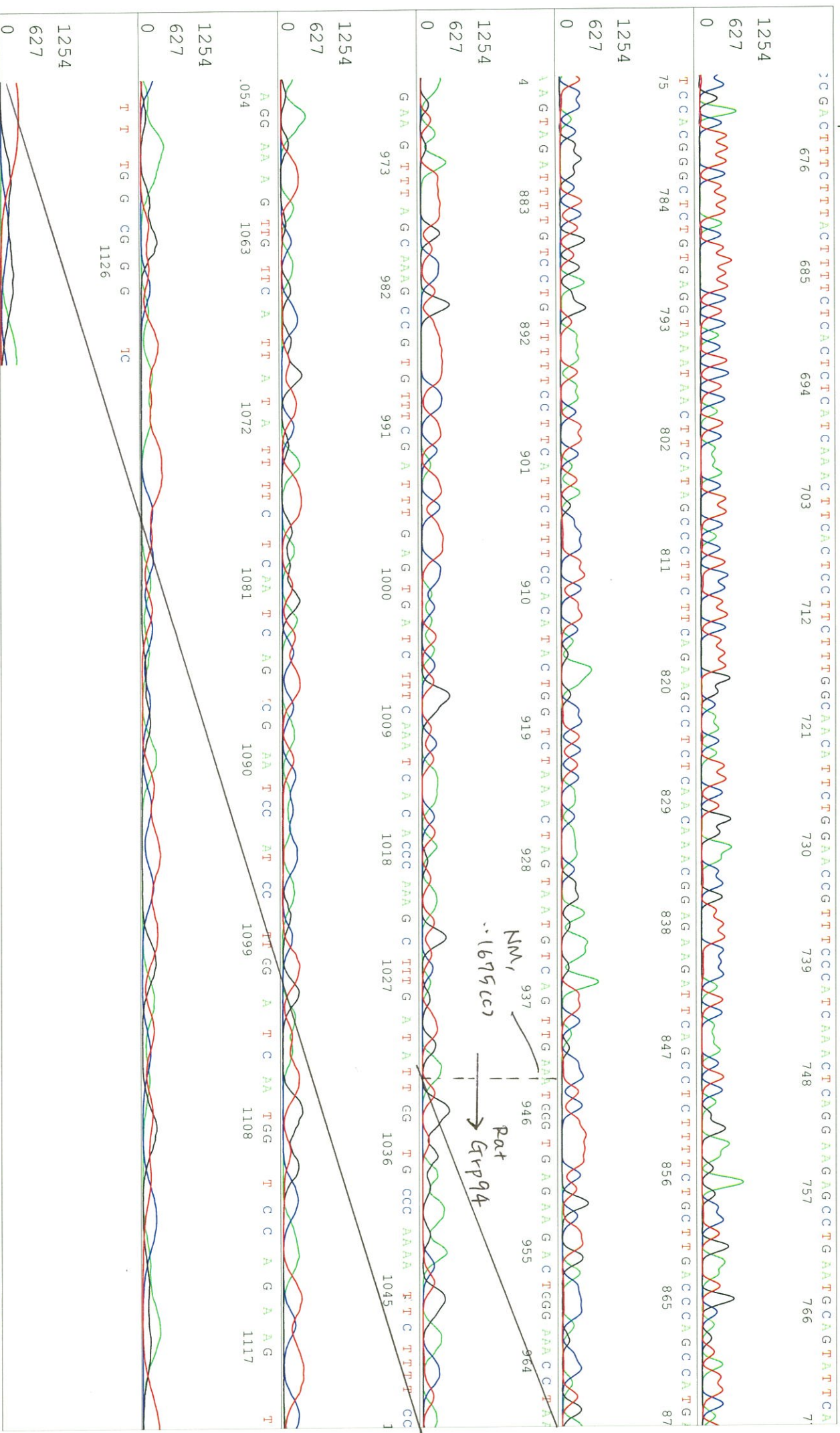
KB 1.4.1.8 Cap:5

Pis 1539 to 13066 Pk1 Loc: 1516

Spacing: 1.59 Pts/Panel1350

Version 6.0 HiSQV Bases: 962

Plate Name: 20170628_kitaku



S/N G:57 A:56 T:63 C:92

KB: bcp

KB 1.4.1.8 Cap: 8

primer name C : SV40polyA-R

KB_3500_POP7_BDTV3.mob

Pis 1533 to 12950 Pk1 Loc: 1510

Version 6.0 HiSQV Bases: 961

5'-TCATTTATGTTTCAGGTTCC-3'

