

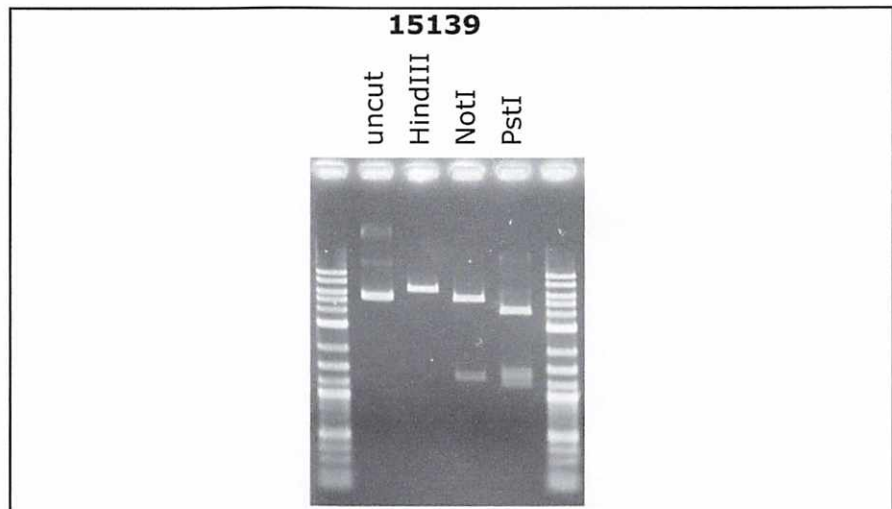
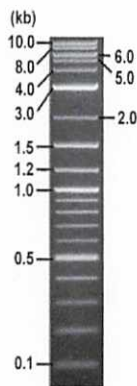


RIKEN DNA BANK

clone name : **Flash pericam/pcDNA3**

- **Clone ID** : RDB_15139
- **Lot** : 15139_A7H9
- **DNA Concentration** : 25 nanogram/microliter
- **Volume** : 40 microliter
- **Form** : DNA solution in TE buffer
- **Host** : DH5 alpha
- **Culture** : LB medium
- **Antibiotics** : 100 microgram/ml Ampicillin
- **Purification** : QIAGEN QIAprep Spin Miniprep kit
- **Digestion by restriction enzyme**

1 kb Plus DNA Ladder
(NEB#N3200L),
250 ng/well



Electrophoresis : 100 nanogram DNA per lane ; 1% agarose gel , 1 x TAE Buffer

Restriction enzyme	Expected size of fragment
HindIII	6.7 kbp
NotI	5.4, 1.3 kbp
PstI	4.1, 1.4, 1.2 kbp

● **Confirmation of the insertion sequence**

Please be sure to check our sequence analysis results before your request.

Sequence name	Primer ID	Primer name	Confirmed feature
Sequence - A	Pr0016	CMV_Forward	CMV pro, T7 pro, insert 5'
Sequence - B	Pr0606	BGH_rev2	insert 3'
Sequence - C	Pr0649	EGFP-N_F	insert mid
Sequence - D	Pr0731	SV40pro_ori_F	NeoR
Sequence - E	-	-	-
Sequence - F	-	-	-
Sequence - G	-	-	-
Sequence - H	-	-	-

APPROVED BY :



S/N G:104 A:109 T:71 C:146

primer name A : CMV-Forward

KB_3500_POP7_BDTV3.mob

Sep 01, 2017 10:19AM, JST

KB.bcp

5'-GCACCAAAATCAACGGGACTT-3'

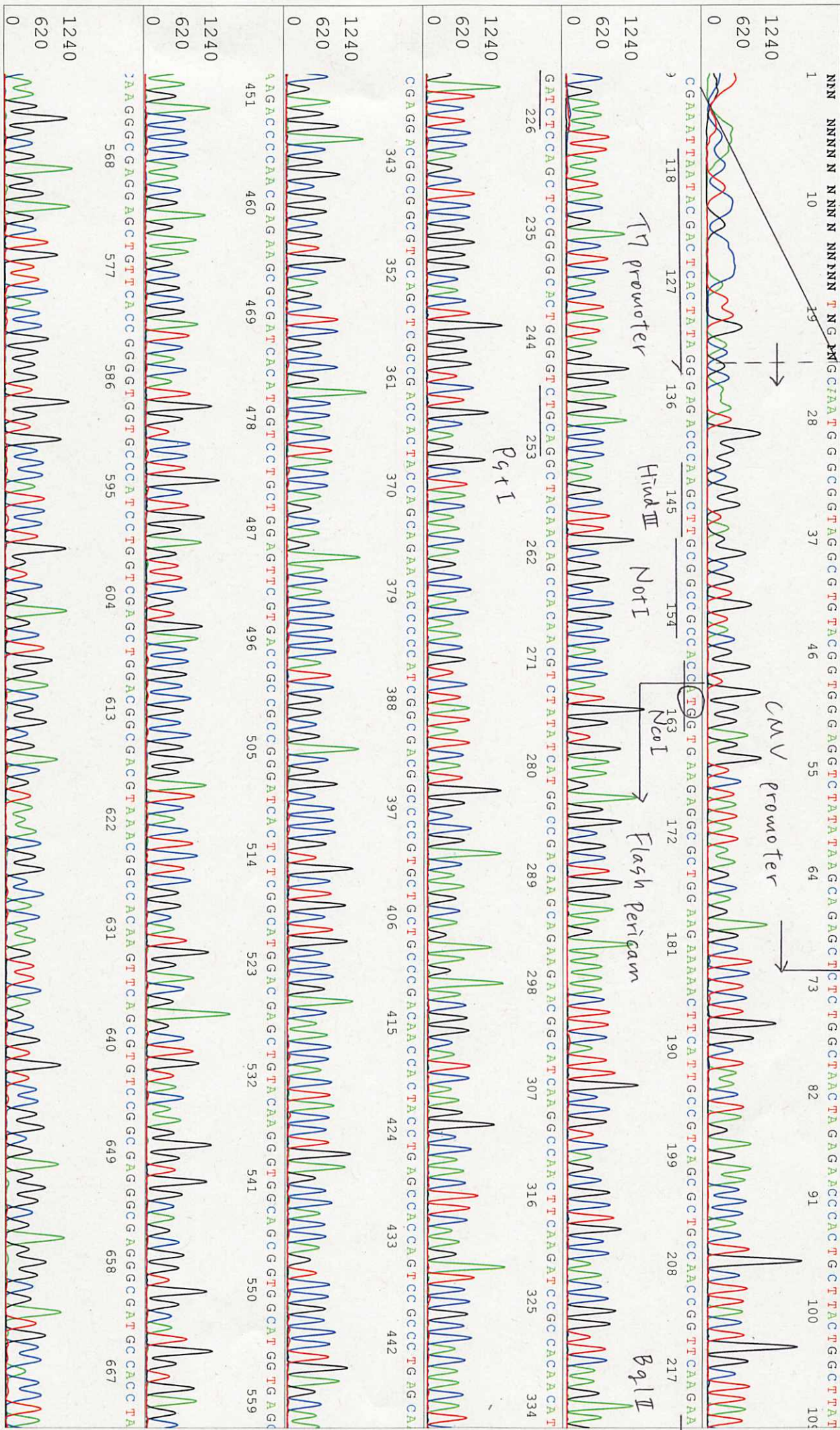
Pls 1433 to 13078 Pk1 Loc:1410

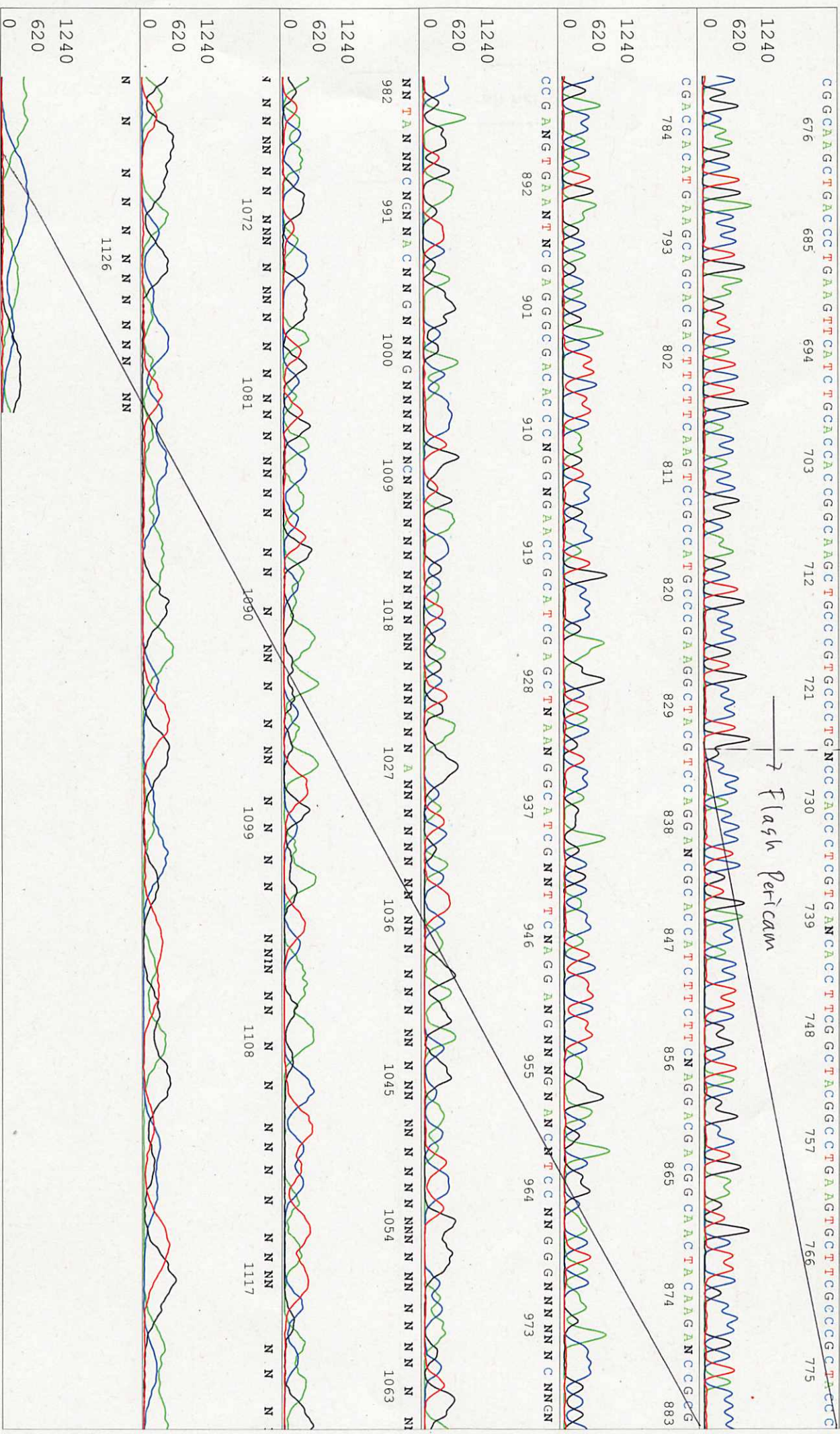
Sep 01, 2017 10:46AM, JST

KB 1.4:18 Cap:5

Version 6.0 HISQV Bases: 945

Plate Name: 20170901_kitaku





S/N G:852 A:691 T:451 C:603 primer name C : EGFP-N_F

KB_bcp KB_3500_POP7_BDTV3.mob

Dec 17, 2020 03:26PM, JST

KB 1.4.1.8 Cap:19 5'-TCGAGCTGGACGGCGGACGTA-3'

Pls 1567 to 12837 PK1 Loc:1544

Spacing:11.41 Pst/Panel1350

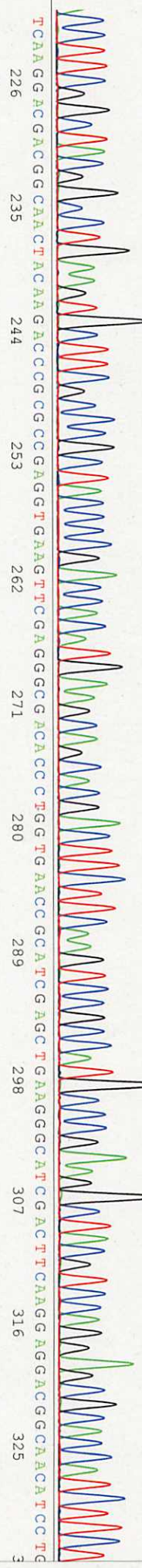
Version 6.0 HISQV Bases: 894

Plate Name: 20201217_mix

1 NN NNNNNN N NN N NNN NNN NCN NNG GCG NNGC NCC TACCG GCAA GCTG NNCC TGAAGTTCATCTG CACCACC GCGCAAGCTGCCCTTGCCCTTGCCCTCCGTTG ACC



9 ACCCTTCGGCTACGGCCCTGAAGTGGCTTCGCGCCCGCTAACCCCGAACACATGAAAGCAGCAGCACTCTTCAAAGTCCGCCATGCCCGAAGGCTACCTCCATCT



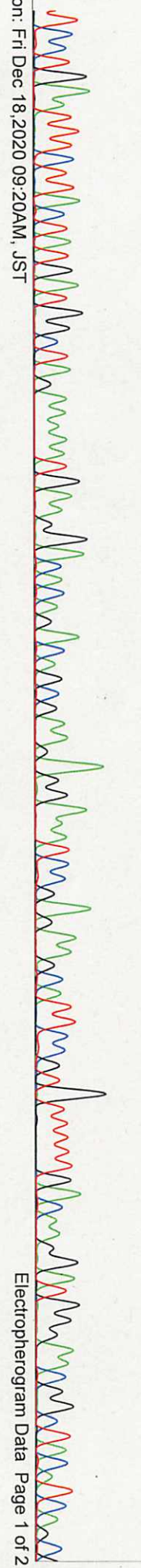
226 TC AAGACGACGCGCAACTACAAAGACCCCGCCGAGGTGAAGTTCGAAGGGCGACA CCGTGGTGAACC GCAATCCAGGATCGACTTCAAAGAGGACGGCAACA TCC TCG



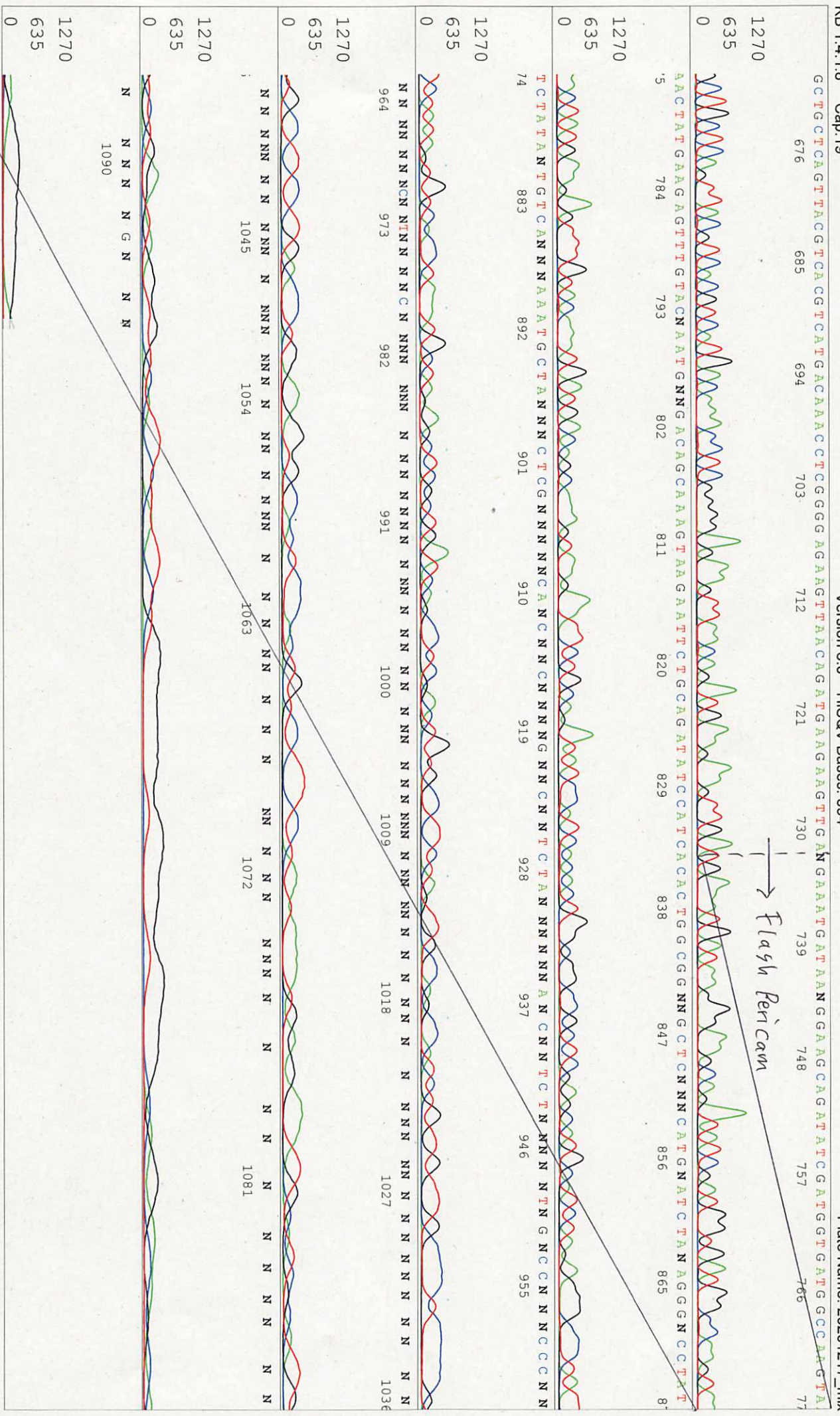
34 GGGCCACAAGCTGGAGTACCAACGGGTACC GGGATGCA TGACCAACTGACAGAAAGCA GAATTGCA GAGTTCAAA GAA GCC TCTCATTA TTCGACAAGGATGGG GACGCCA CCA TCG



451 ACCACAAGGAACCTTGGCACCCTTATGAGGTCCTTGGACAAAACCCAA CCGAAGCA GAATTCGAGGATATGATCAA TGAAGTCGATGCTGATGGCAATGGAACGATTACTT



568 TCCTGAATTTCTTACTATGATGGCTAGAAAATGAAAGGACACAGACAGCCGGAAGAGGAAATCCGAGAGGCAATCCGTTTGGACAAGGATGGAAACGGCTACATCAAGC



S/N G:905 A:518 T:564 C:463 primer name SV40pro_ori_F

KB: bcp KB_3500_POP7_BDTV3.mob

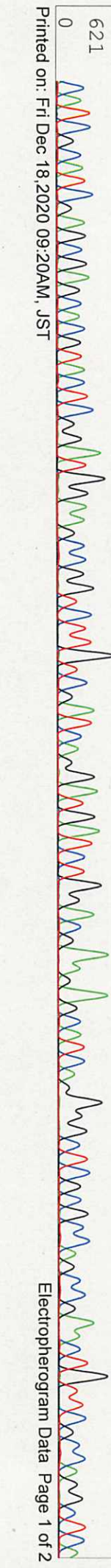
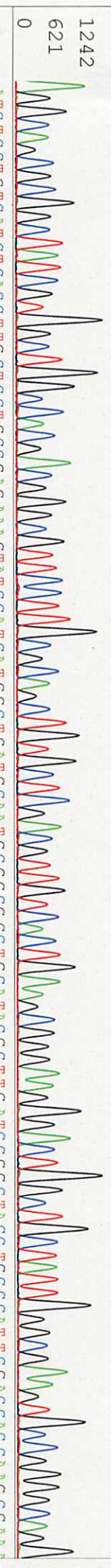
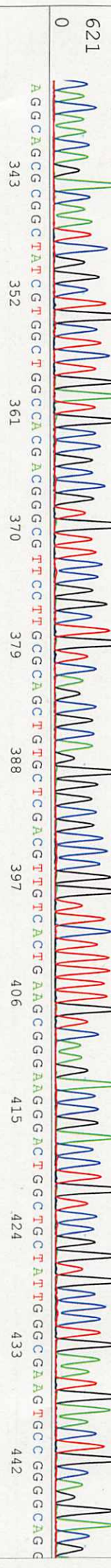
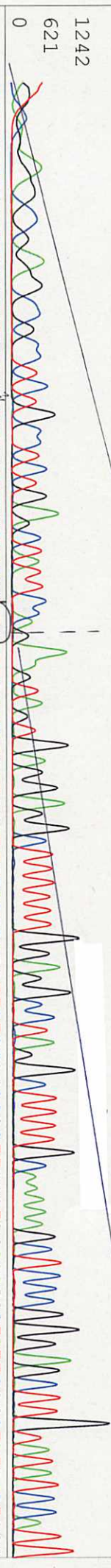
Dec 17, 2020 03:26PM, JST

KB 1.4.1.8 Cap:22 5- TTCTCCGCCCCATGGCTGACTAAT -3'

Pts 1613 to 12884 Pk1 Loc:1590

Spacing: 11.52 Pts/Panel1350

1 NNN NNN NN N N N NNG NCG CCT C N G CCT C T G NN C T A T T C T N G A A G T A G T G A G G A G G C C T T T T T G G A G G C C T A G G C T T T G C A A A A G C C T C C C G G G A G C T T G T A T T C C A T T



S/N G:905 A:518 T:564 C:463

D04498C6_A7H9_1_SV40pro_ori_F

Dec 17, 2020 02:59PM, JST

KB:bcp

KB_3500_POP7_BDTV3.mob

Dec 17, 2020 03:26PM, JST

KB 1.4.1.8 Cap:22

Pls 1613 to 12884 Pk1 Loc:1590

Spacing: 11.52 Pls/Panel1350

Version 6.0 HISQV Bases: 885

Version 6.0 HISQV Bases: 885

Plate Name: 20201217_mix

